

CPA-925	T-1	ROOF REPLACEMENT AT YMCA	Title sheet and schedule of drawings 3/7/2005
CPA-926	A-1	BUILDING CAPITAL PLAZA COMPLEX	Plaza and roof plan - small scale
CPA-927	A-2	FRANKFORT, KY	Plaza plan - large scale
CPA-928	A-3	ENG FILE # FPYM0030 ACCOUNT # 04-	Roof plan - large scale
CPA-929	A-4	0200-785-0514-P0514-00-Z	Insulation sections
CPA-930	A-5		Insulation and pier sections
CPA-931	A-6		Miscellaneous details
CPA-932	A-7		Plumbing plan

ROOF REPLACEMENT AT YMCA BUILDING CAPITAL PLAZA COMPLEX

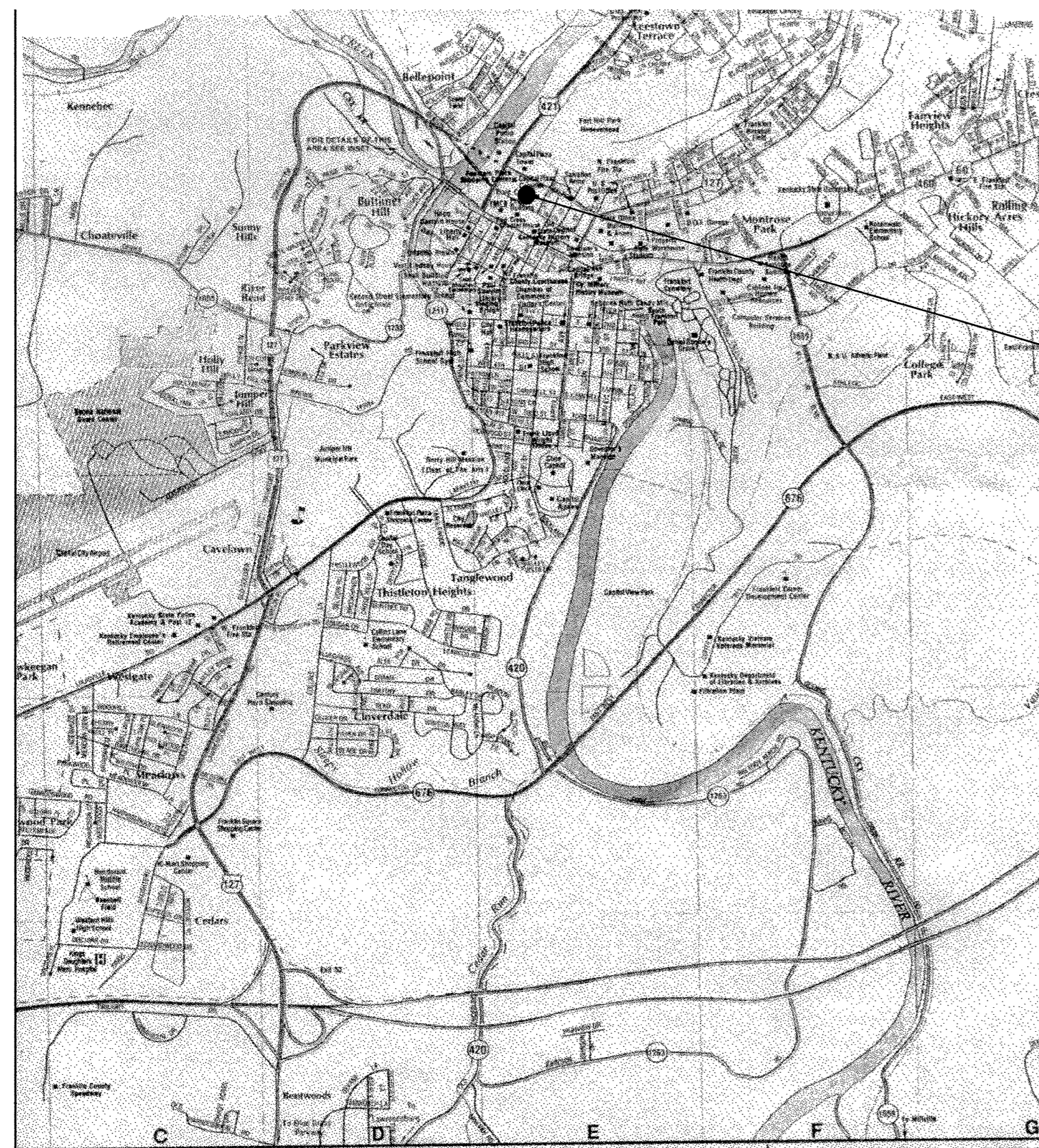
FRANKFORT, KENTUCKY

COMMONWEALTH OF KENTUCKY
FINANCE AND ADMINISTRATION CABINET
DEPARTMENT FOR FACILITIES MANAGEMENT
DIVISION OF ENGINEERING
FRANKFORT, KENTUCKY

ERNIE FLETCHER, GOVERNOR
STATE OF KENTUCKY

ENG. FILE NO. FPYM0030

ACCOUNT NO. 04-0200-785-D785-BR-514-0514-P0514-00-Z



SITE LOCATION PLAN N. T. S.

THIS PROJECT

CONSTRUCTION LOADS SHALL NOT EXCEED:

PLAZA LEVEL	250 P. S. F. LIVE LOAD 12,000 POUNDS CONCENTRATED.
PLAZA PLANTERS	50 P. S. F. LIVE LOAD
MEZZANINE (POOL AREA)	100 P. S. F. LIVE LOAD
VEHICLES ON PLAZA SHALL NOT EXCEED A SPEED OF 5 M. P. H.	

INDEX TO NOTES

1. **GENERAL**
1-1 THRU 1-7 SEE SH. A-1
2. **EXISTING TO REMAIN**
2-1 THRU 2-17 SEE SH. A-1, 2, 3, 5, 7
21. **EXISTING TO BE REMOVED**
21-1 THRU 21-5 SEE SH. A-1, 2, 3
22. **REMOVE AND REPLACE**
22-1 THRU 22-6 SEE SH. A-1, 2, 4, 6
3. **PRECAST PANELS**
3-1 THRU 3-10 SEE SH. A-2, 3, 6
31. **CONCRETE**
31-1 THRU 31-10 SEE SH. A-6
7. **INSULATION**
7-1 THRU 7-5 SEE SH. A-3, 4
71. **ACCESSORIES**
71-1 THRU 71-6 SEE SH. A-2, 4, 5
72. **ROOFING**
72-1 THRU 72-15 SEE SH. A-3, 4, 5
8. **DOORS AND FRAME**
8-1 THRU 8-4 SEE SH. A-6
9. **PLUMBING**
9-1 THRU 9-5 SEE SH. A-3, 7

LEGEND

	BRICK
	CONCRETE
	EARTH
	GRAVEL
	GYPSUM BOARD
	ROUGH LUMBER
	FINISH LUMBER
	INSULATION
	PLYWOOD
	ALUMINUM
	STEEL
	SHEET METAL
	EXIST. GRADE
	SECTION ON SHEET

ABBREVIATIONS

AFF.	ABOVE FINISH FLOOR
AL.	ALUMINUM
BLDG.	BUILDING
BOTT.	BOTTOM
B. S.	BRICK SEAT
CAB.	CABINET
C/L	CENTER LINE
CONC.	CONCRETE
CONT.	CONTINUOUS
DET.	DETAIL
D. S.	DOWNSOUT
EA.	EACH
EL.	ELEVATION
EJM	EXPANSION JT. MATERIAL
EQ.	EQUAL
EXIST.	EXISTING
EXT.	EXTERIOR
F. D.	FLOOR DRAIN
FL.	FLOOR
GA.	GAUGE
G. I.	GALVANIZED IRON
GR.	GRADE
GYP. BD.	GYPSUM BOARD
INSUL.	INSULATION
JT.	JOINT
MAT.	MATERIAL
MET.	METAL
M. H.	MAN HOLE
M.O.	MASONRY OPENING
N. T. S.	NOT TO SCALE
P.L.	PLATE
PLY. WD.	PLYWOOD
REQ.	REQUIRED
R. D.	ROOF DRAIN
R. O.	ROUGH OPENING
S/S	STAINLESS STEEL
TOGG.	TOGGLE BOLT
TYP.	TYPICAL
WD.	WOOD
W/O	WITH OUT
W/P	WATERPROOF
C/R	COLD ROLLED
T/E	TAPERED EDGE
VBS	VENTING BASE SHEET
BSF	BASE SHEET FASTNER

BOLTS AND SCREWS

FH	FLAT HEAD
RH	ROUND HEAD
OH	OVAL HEAD
WS	WOOD SCREW
SMS	SHEET METAL SCREW
MB	MACHINE BOLT
PDF	POWER DRIVEN FASTNER

SCHEDULE OF DRAWINGS

<u>SHEET</u>	<u>TITLE</u>
T-1	TITLE SHEET AND SCHEDULE OF DRAWINGS

SITE DEVELOPMENT

NONE REQUIRED THIS PROJECT

ARCHITECTURAL

A-1	PLAZA AND ROOF PLAN - SMALL SCALE
A-2	PLAZA PLAN - LARGE SCALE
A-3	ROOF PLAN - LARGE SCALE
A-4	INSULATION SECTIONS
A-5	INSULATION AND PIER SECTIONS
A-6	MISCELLANEOUS DETAILS
A-7	PLUMBING PLAN

STRUCTURAL

NONE REQUIRED THIS PROJECT

PLUMBING

SEE SHEET A-7

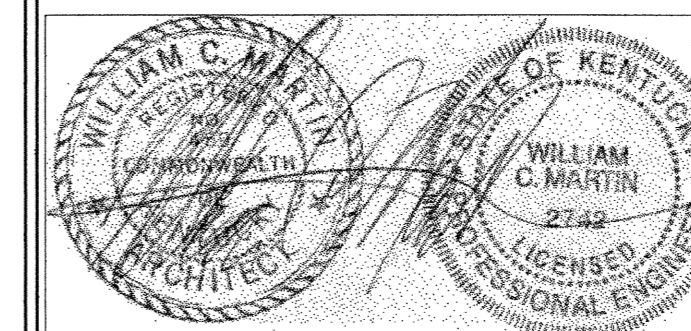
HVAC

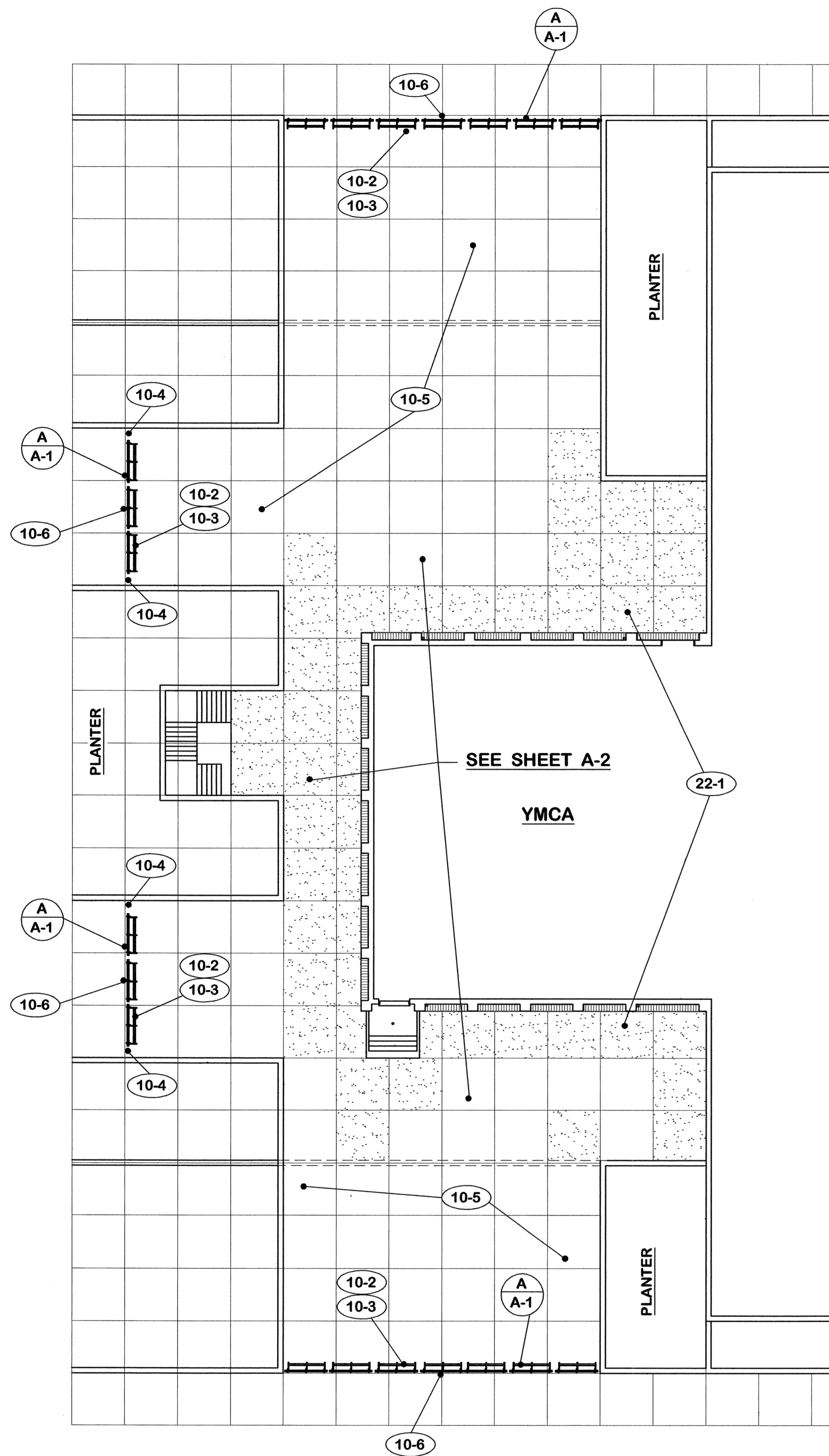
NONE REQUIRED THIS PROJECT

ELECTRICAL

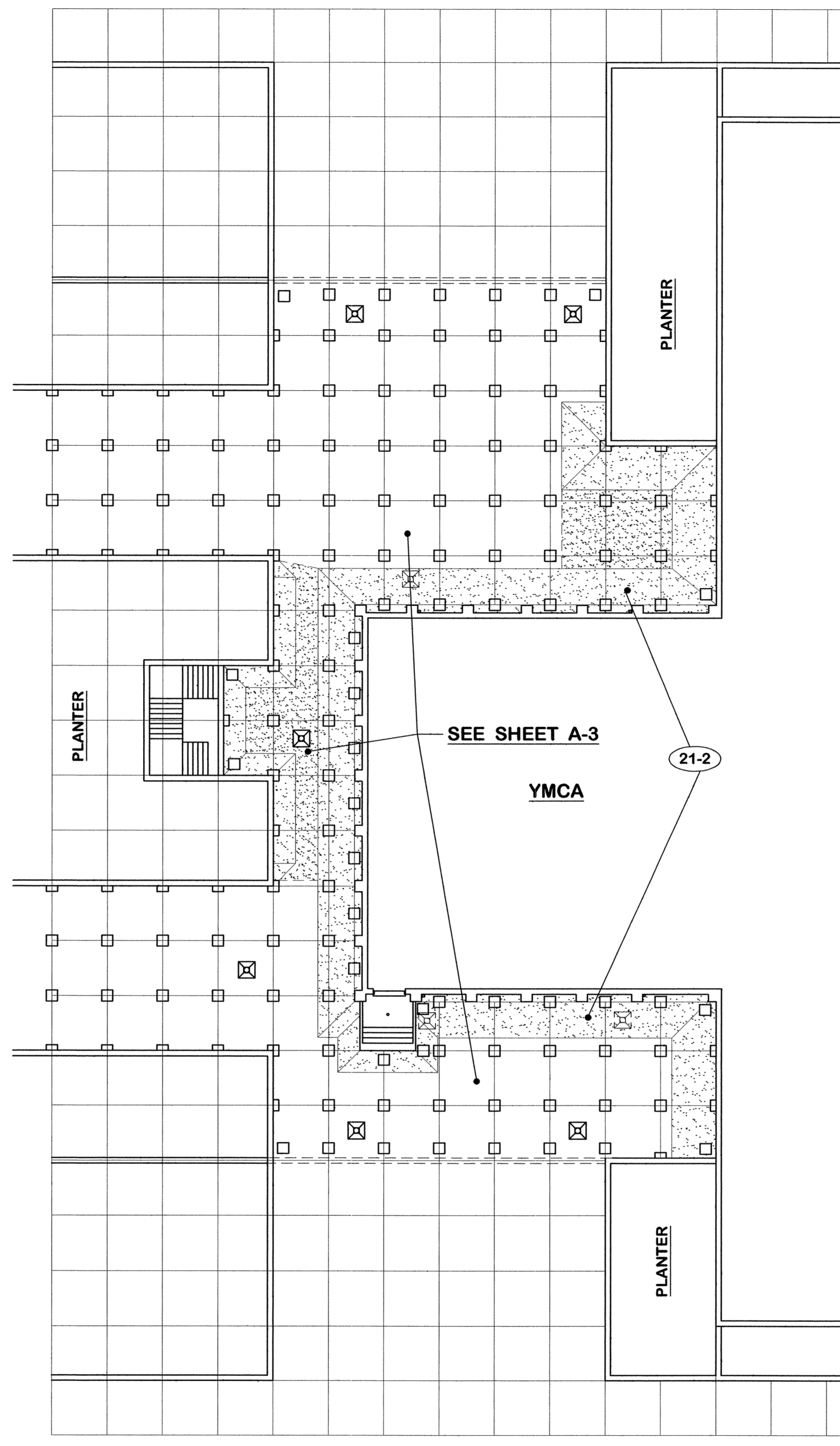
NONE REQUIRED THIS PROJECT

WILLIAM C. MARTIN, P.S.C.
ARCHITECTS - ENGINEERS

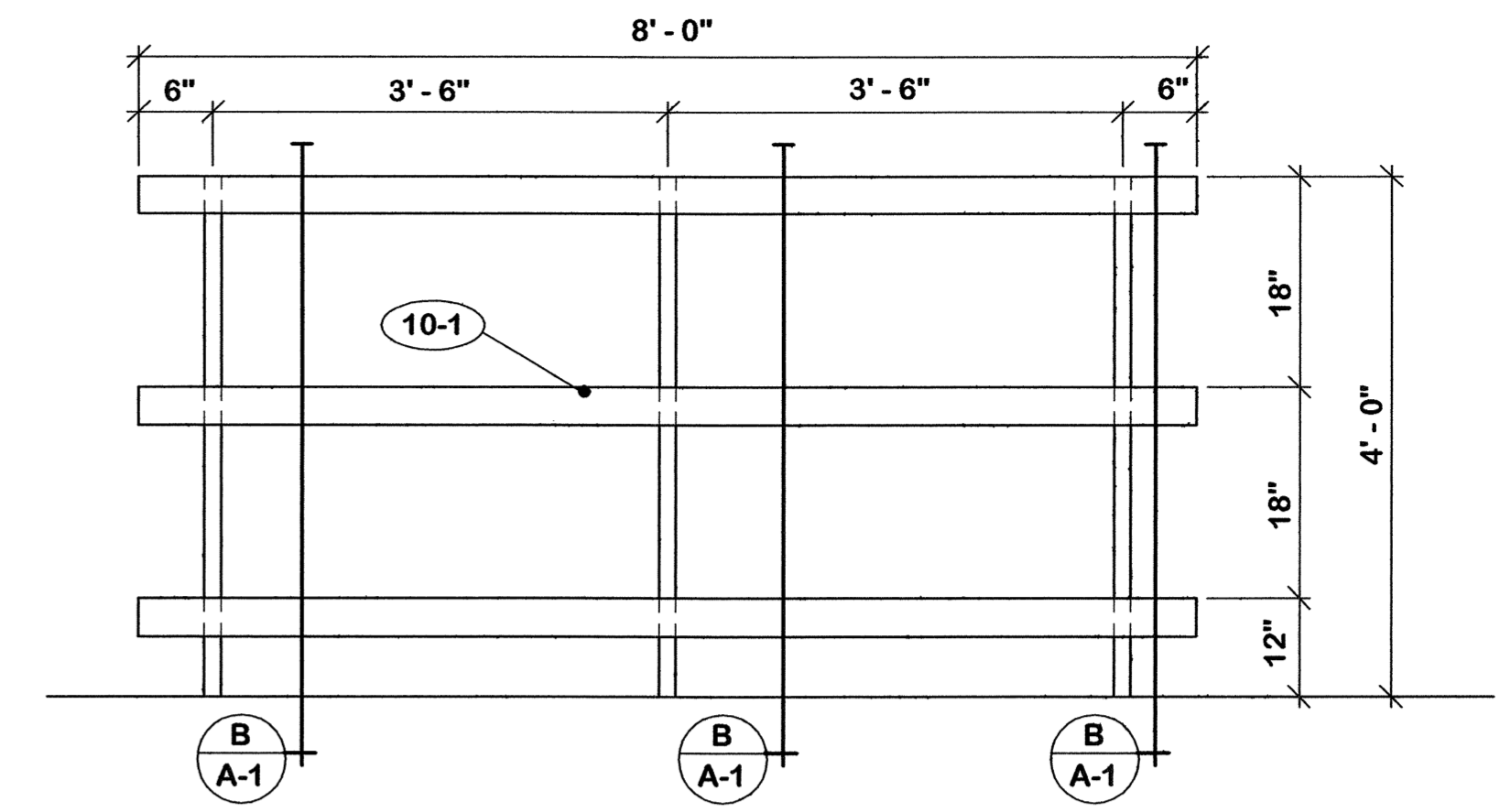




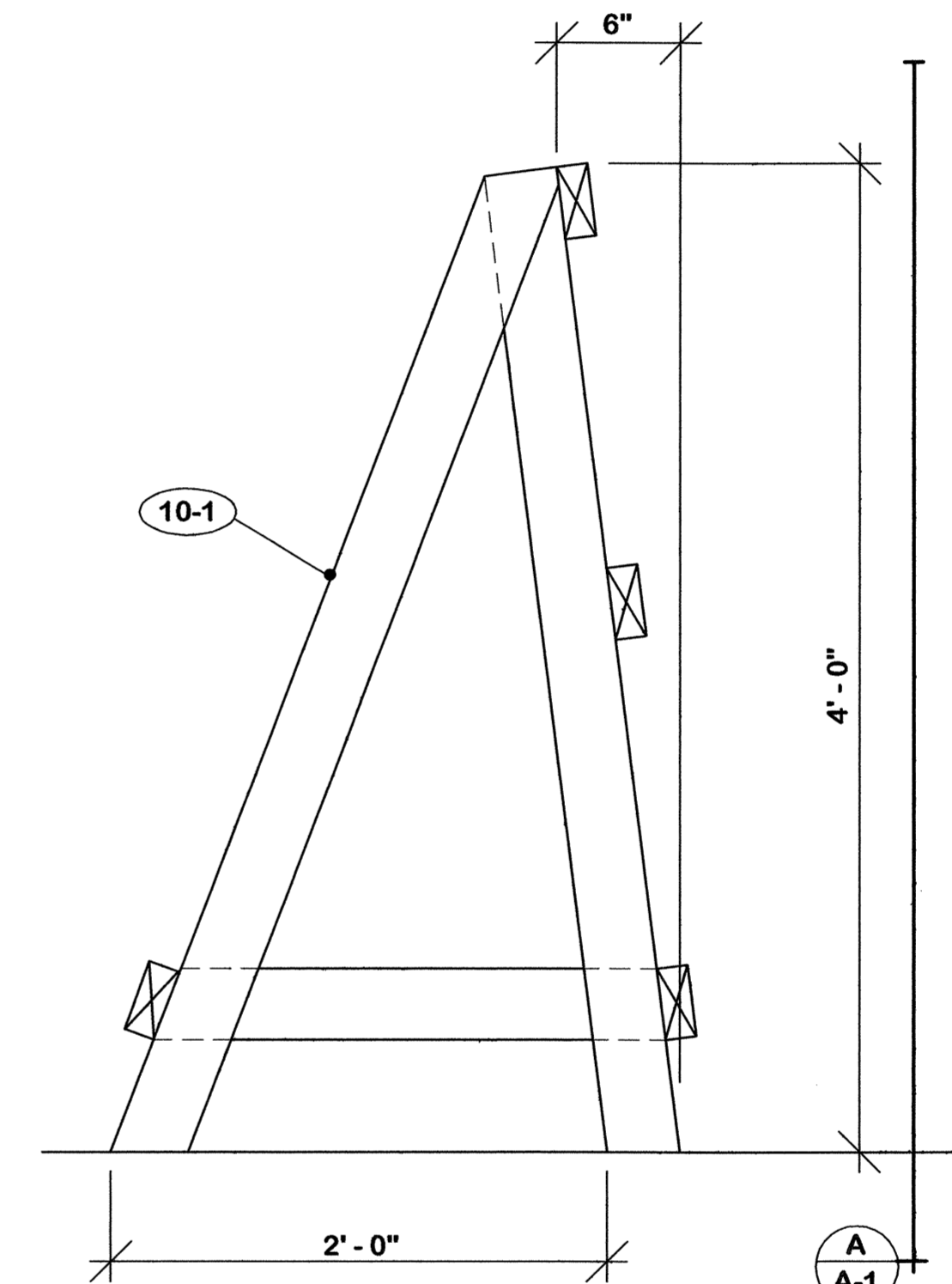
PLAZA PLAN 1/16" = 1'-0" NORTH



ROOF PLAN 1/16" = 1'-0" NORTH



ELEVATION 3/4" = 1'-0"



SECTION 3/4" = 1'-0"

1. GENERAL
 - 1-1 Do not scale drawings.
 - 1-2 Verify field conditions, dimensions and quantities prior to ordering or placing any materials in the work.
 - 1-3 Verify free flow through all roof and planter drains before beginning any demolition.
 - 1-4 Report all clogged drains to architect before beginning any demolition.
 - 1-5 Replace damaged or missing roof drain strainers.
 - 1-6 Protect all panels from damage by reason of this work.
 - 1-7 Protect water lines and accessories from damage by reason of this work.

2. EXISTING TO REMAIN

- 2-1 Roof drains.
- 2-2 Insulation.
- 2-3 Roofing.
- 2-4 Fixed piers.
- 2-5 Precast concrete panels.
- 2-6 Downspouts.
- 2-7 Doors and frames.
- 2-8 Pipe rails.
- 2-9 Concrete slab.
- 2-10 Concrete steps.
- 2-11 Drain pipe.
- 2-12 Expansion joint.
- 2-13 Concrete block wall.
- 2-14 Concrete wall.
- 2-15 Gymnasium floor.
- 2-16 Cast iron drain pipe.
- 2-17 Column below.

21. EXISTING TO REMOVE

- 21-1 Roof drains.
- 21-2 Roofing and insulation where new work occurs.
- 21-3 Pre-cast concrete panel.
- 21-4 Floor drain.
- 21-5 Concrete slab.

10. BARRICADES

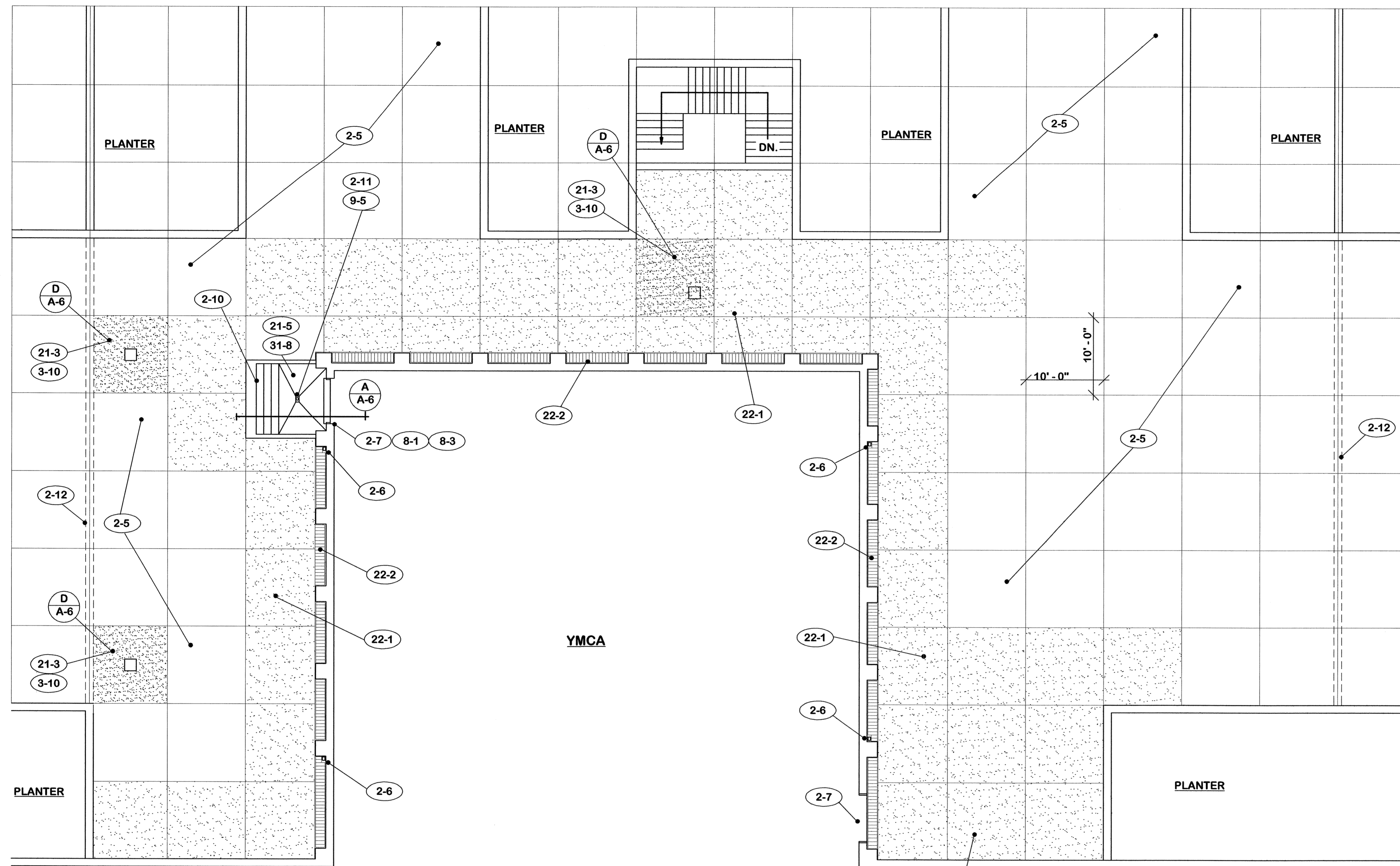
- 10-1 Construct barricades with 2 x 4's to detail.
- 10-2 Erect barricades in locations shown.
- 10-3 Space barricade approximately 12" between sections.
- 10-4 Stretch yellow tape between barricade section and planter wall where barricade is more than 12" from wall.
- 10-5 All materials and equipment shall be kept within barricaded area.
- 10-6 Erect "stay-out" sign at locations shown. (see specifications)

22. REMOVE AND REPLACE

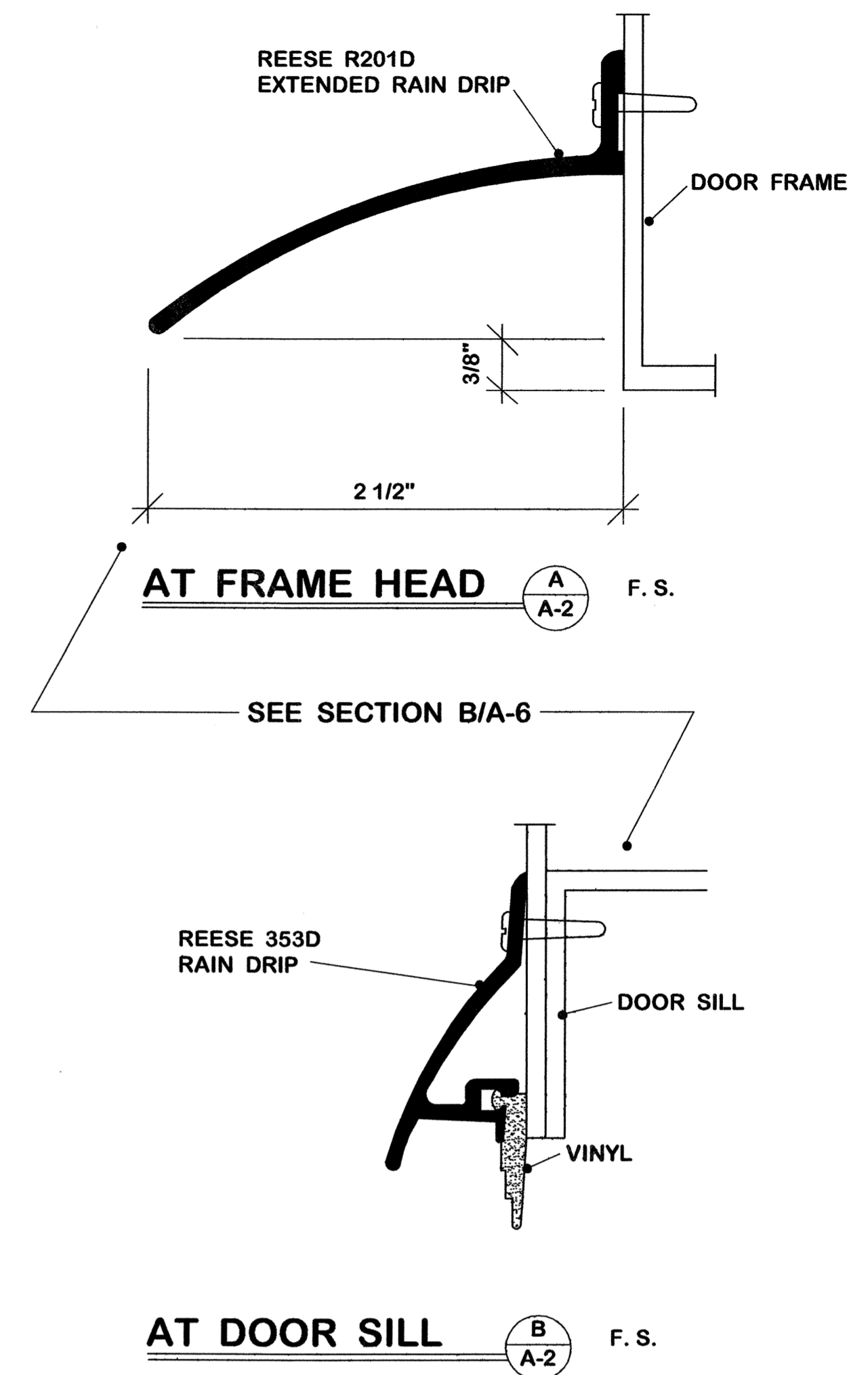
- 22-1 Pre-cast concrete panels indicated by stippling.
- 22-2 Steel grating.
- 22-3 Verify that access panels are replaced over roof drains and items below that require access.
- 22-4 Movable piers.
- 22-5 Center movable piers between concrete block pilasters.
- 22-6 Re-set movable piers on concrete deck before placing insulation.

ROOF REPLACEMENT AT YMCA CAPITAL PLAZA COMPLEX FRANKFORT, KENTUCKY		DRAWING NO. A-1 OF 8 REVIEWED DIV. OF ENGR. 29. 3/1/05 ENGR. FILE NO. FPYM0030
AS BUILT DATE:	PLAZA AND ROOF PLAN - SMALL SCALE	COMMONWEALTH OF KENTUCKY FINANCE AND ADMINISTRATION CABINET DEPARTMENT FOR FACILITIES MANAGEMENT DIVISION OF ENGINEERING FRANKFORT, KENTUCKY
DRAWN BY <i>MARTIN</i>	CHECKED BY <i>MARTIN</i>	WILLIAM C. MARTIN, P.S.C. ARCHITECTS-ENGINEERS 620 EUCLID AVENUE LEXINGTON, KENTUCKY
REV. DATE DESCRIPTION	DATE 18 Feb. 2005	AGENCY AUTHORIZED AGENT _____ DATE _____ DIVISION OF ENGINEERING _____ DATE 3/1/05
		APPROVED FOR PROGRAM CONCEPT ONLY

CPA-9226

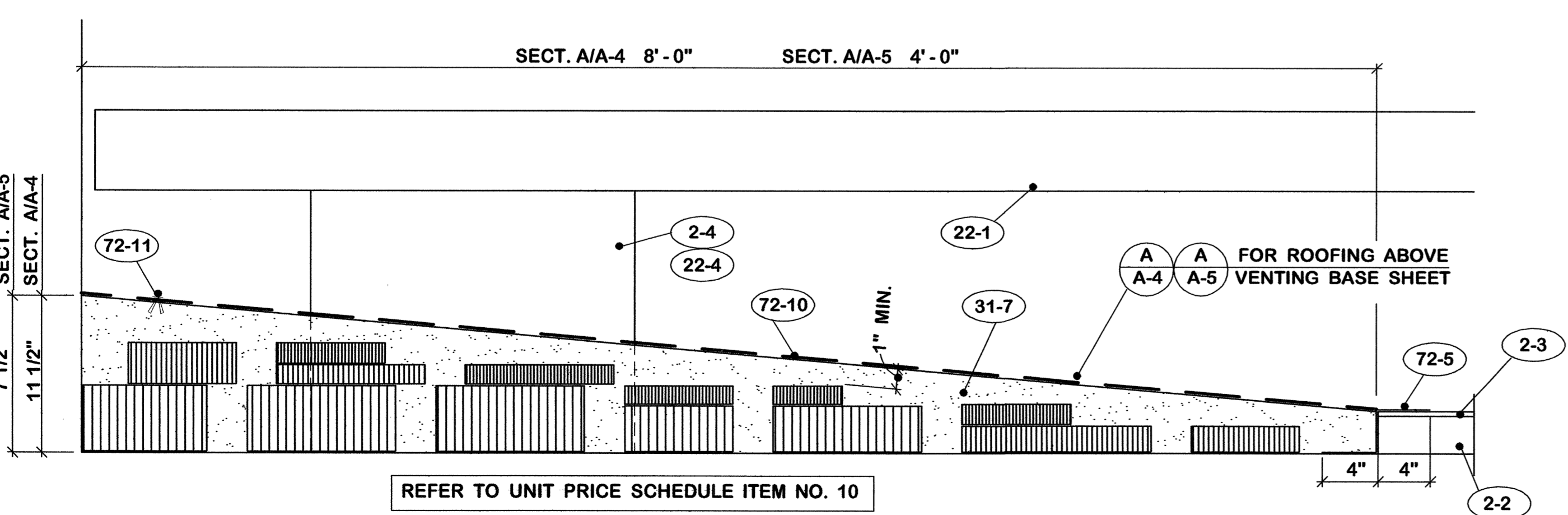


PLAZA PLAN 1/8" = 1'-0" NORTH



AT FRAME HEAD A A-2 F. S.

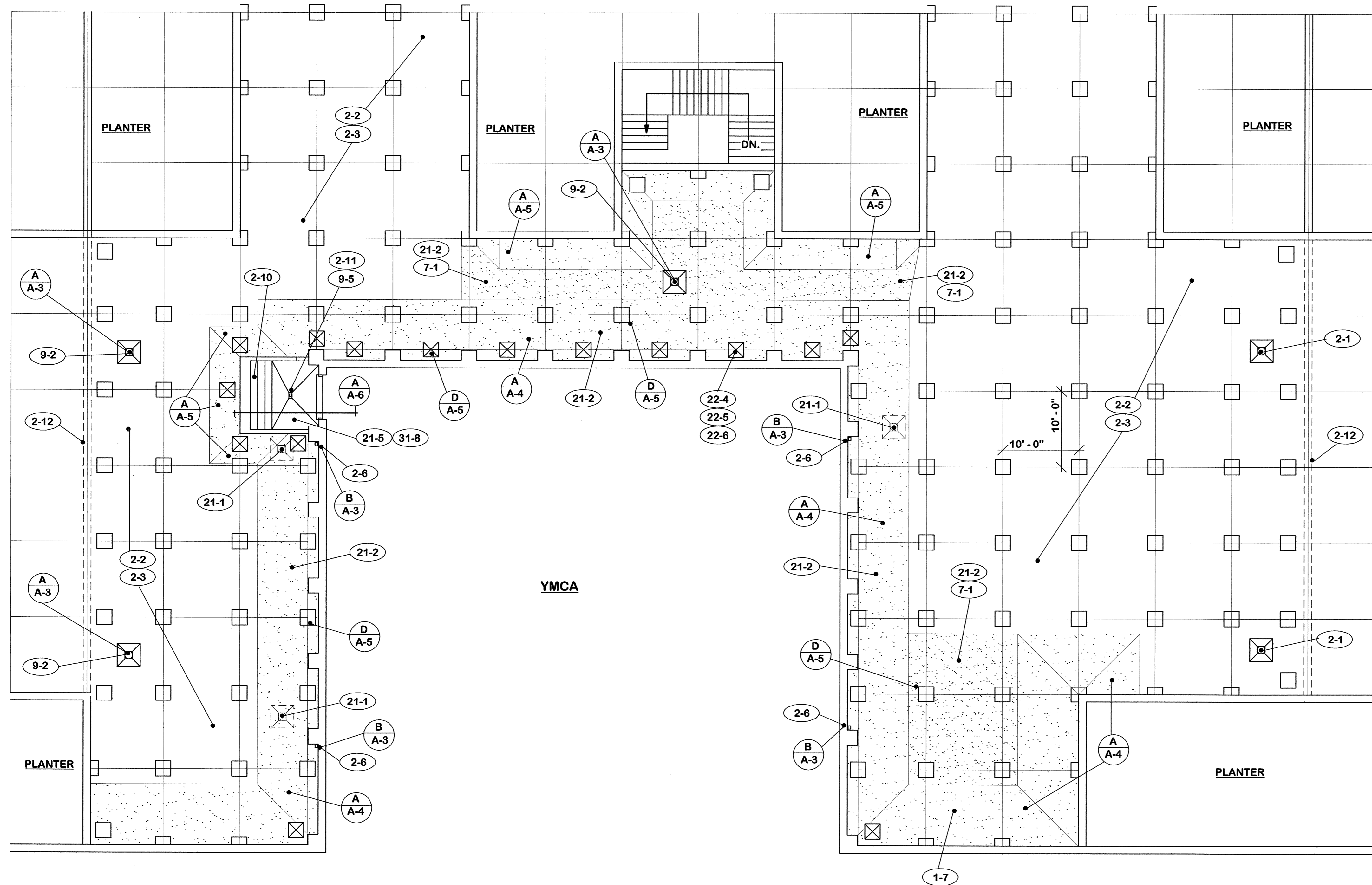
AT DOOR SILL B A-2 F. S.



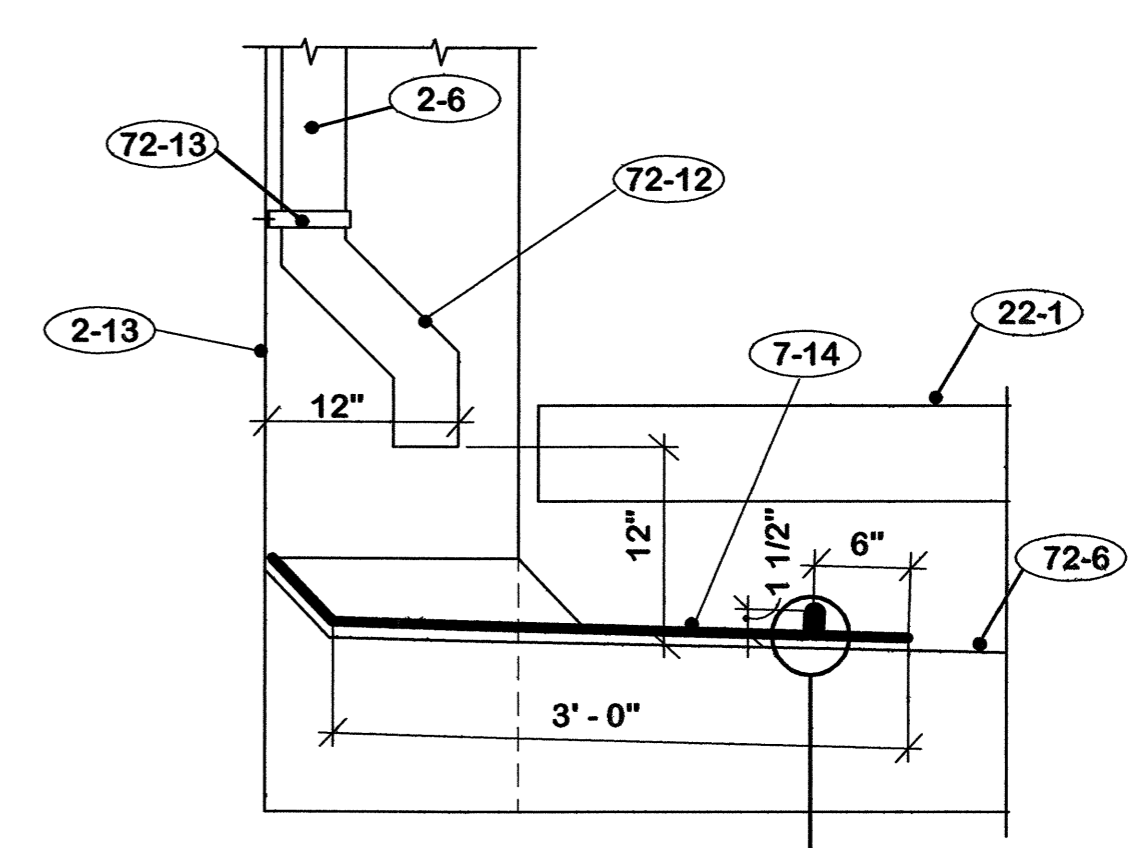
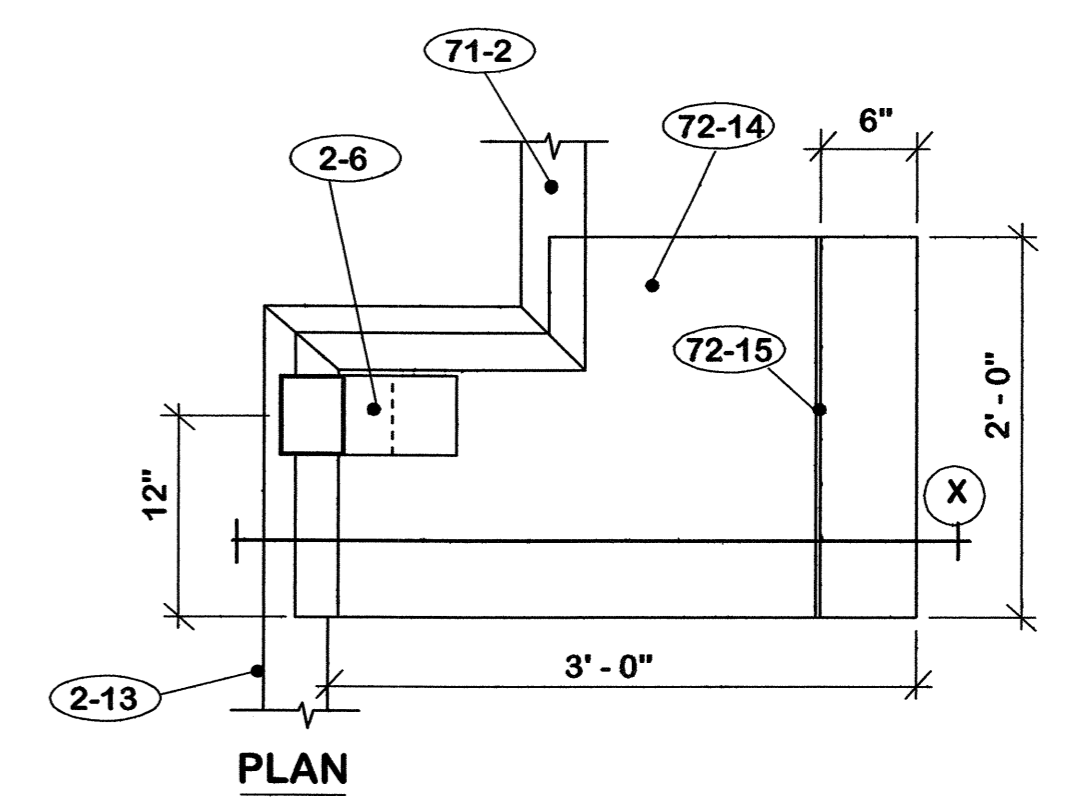
TYPICAL SECTION FOR LIGHT WEIGHT CONCRETE FILL -- IF SELECTED 1 1/2" = 1'-0"

2. EXISTING TO REMAIN
 - 2-1 Roof drains.
 - 2-2 Insulation.
 - 2-3 Roofing.
 - 2-4 Fixed piers.
 - 2-5 Precast concrete panels.
 - 2-6 Downspouts.
 - 2-7 Doors and frames.
 - 2-8 Pipe rails.
 - 2-9 Concrete slab.
 - 2-10 Concrete steps.
 - 2-11 Drain pipe.
 - 2-12 Expansion joint.
 - 2-13 Concrete block wall.
 - 2-14 Concrete wall.
 - 2-15 Gymnasium floor.
 - 2-16 Cast iron drain pipe.
 - 2-17 Column below.
22. REMOVE AND REPLACE
 - 22-1 Pre-cast concrete panels indicated by stippling.
 - 22-2 Steel grating.
 - 22-3 Verify that access panels are replaced over roof drains and items below that require access.
 - 22-4 Movable piers.
 - 22-5 Center movable piers between concrete block pilasters.
 - 22-6 Re-set movable piers on concrete deck before placing insulation.
3. PRE-CAST PANELS
 - 3-1 Existing insert each corner with cap.
 - 3-2 5/8" eye bolt furnished by contractor.
 - 3-3 Save and replace caps on inserts.
 - 3-4 Repair damaged edges and corners.
 - 3-5 Replace damaged access panels.
 - 3-6 S/S sleeve with countersunk top.
 - 3-7 1/8" neoprene pad. Provide 1/2" holes for screws.
 - 3-8 S/S threaded sleeve.
 - 3-9 S/S 3/8" x 4" flat head bolt.
 - 3-10 Install new pre-cast panel with access panel over roof drain.
71. ACCESSORIES
 - 71-1 Three (3) pound lead flashing sheet set in full bed plastic cement and prime top.
 - 71-2 1 1/2" x 4" wood fiber cant strip.
 - 71-3 1 1/2" x 12" wood fiber tapered edge.
 - 71-4 1 1/2" x 12" wood fiber tapered edge. Trim to fit.
 - 71-5 2" x 12" wood fiber tapered edge.
 - 71-6 "Tru-Fast" No. TB-100 0.125" x 1" aluminum retainer bar. Secure on 8" centers.

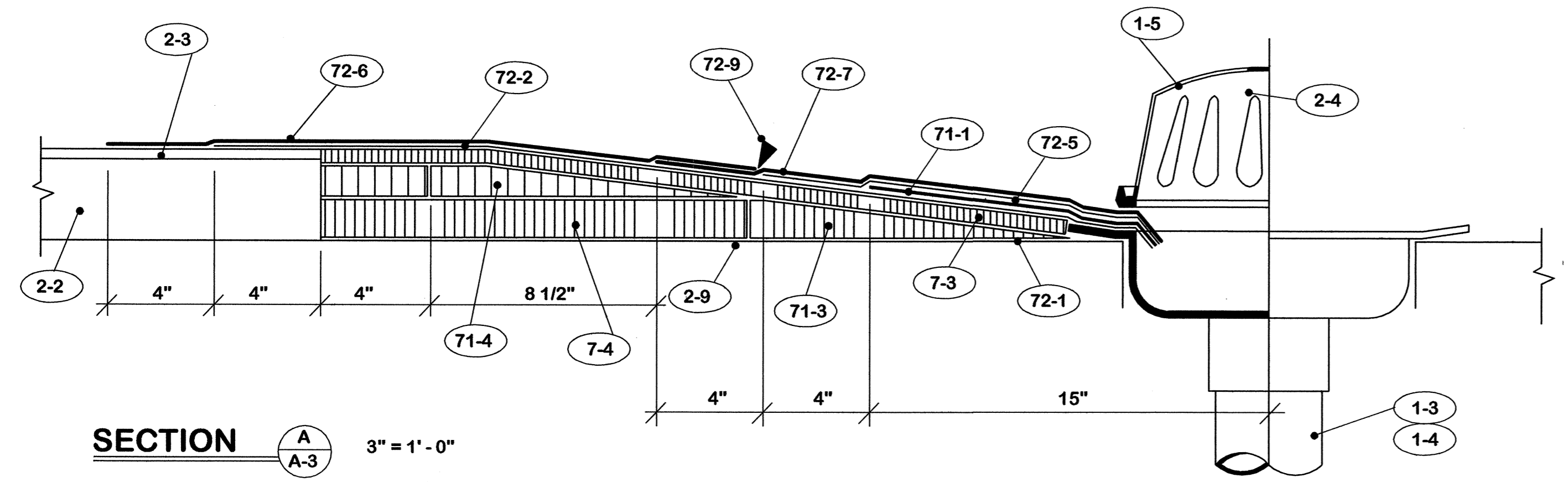
AS BUILT DATE DRAWN BY <i>M</i> CHECKED BY <i>M</i> A & S FILE DATE 18 Feb. 2005		ROOF REPLACEMENT AT YMCA CAPITAL PLAZA COMPLEX FRANKFORT, KENTUCKY PLAZA PLAN -- LARGE SCALE COMMONWEALTH OF KENTUCKY FINANCE AND ADMINISTRATION CABINET DEPARTMENT FOR FACILITIES MANAGEMENT DIVISION OF ENGINEERING FRANKFORT, KENTUCKY WILLIAM C. MARTIN, P.S.C. ARCHITECTS-ENGINEERS 620 EUCLID AVENUE LEXINGTON, KENTUCKY		DRAWING NO. A-2 OF 8 REVIEWED DATE 3/7/05 ENG. FILE NO. FPYM0030
REV. DATE DESCRIPTION 	AGENCY AUTHORIZED AGENT _____ DATE _____ DIVISION OF ENGINEERING <i>William C. Martin</i> APPROVED FOR PROGRAM CONCEPT ONLY DATE 3/7/05			



ROOF PLAN 1/8" = 1'-0" NORTH



SECTION X
DETAIL B A-3 1" = 1'-0"



SECTION A A-3 3" = 1'-0"

- 2. EXISTING TO REMAIN**
- 2-1 Roof drains.
 - 2-2 Insulation.
 - 2-3 Roofing.
 - 2-4 Fixed piers.
 - 2-5 Precast concrete panels.
 - 2-6 Downspouts.
 - 2-7 Doors and frames.
 - 2-8 Pipe rails.
 - 2-9 Concrete slab.
 - 2-10 Concrete steps.
 - 2-11 Drain pipe.
 - 2-12 Expansion joint.
 - 2-13 Concrete block wall.
 - 2-14 Concrete wall.
 - 2-15 Gymnasium floor.
 - 2-16 Cast iron drain pipe.
 - 2-17 Column below.

- 21. EXISTING TO REMOVE**
- 21-1 Roof drains.
 - 21-2 Roofing and insulation where new work occurs.
 - 21-3 Pre-cast concrete panel.
 - 21-4 Floor drain.
 - 21-5 Concrete slab.

- 3. PRE-CAST PANELS**
- 3-1 Existing insert each corner with cap.
 - 3-2 5/8" eye bolt furnished by contractor.
 - 3-3 Save and replace caps on inserts.
 - 3-4 Repair damaged edges and corners.
 - 3-5 Replace damaged access panels.
 - 3-6 S/S sleeve with countersunk top.
 - 3-7 1/8" neoprene pad. Provide 1/2" holes for screws.
 - 3-8 S/S threaded sleeve.
 - 3-9 S/S 3/8" x 4" flat head bolt.
 - 3-10 Install new pre-cast panel with access panel over roof drain.

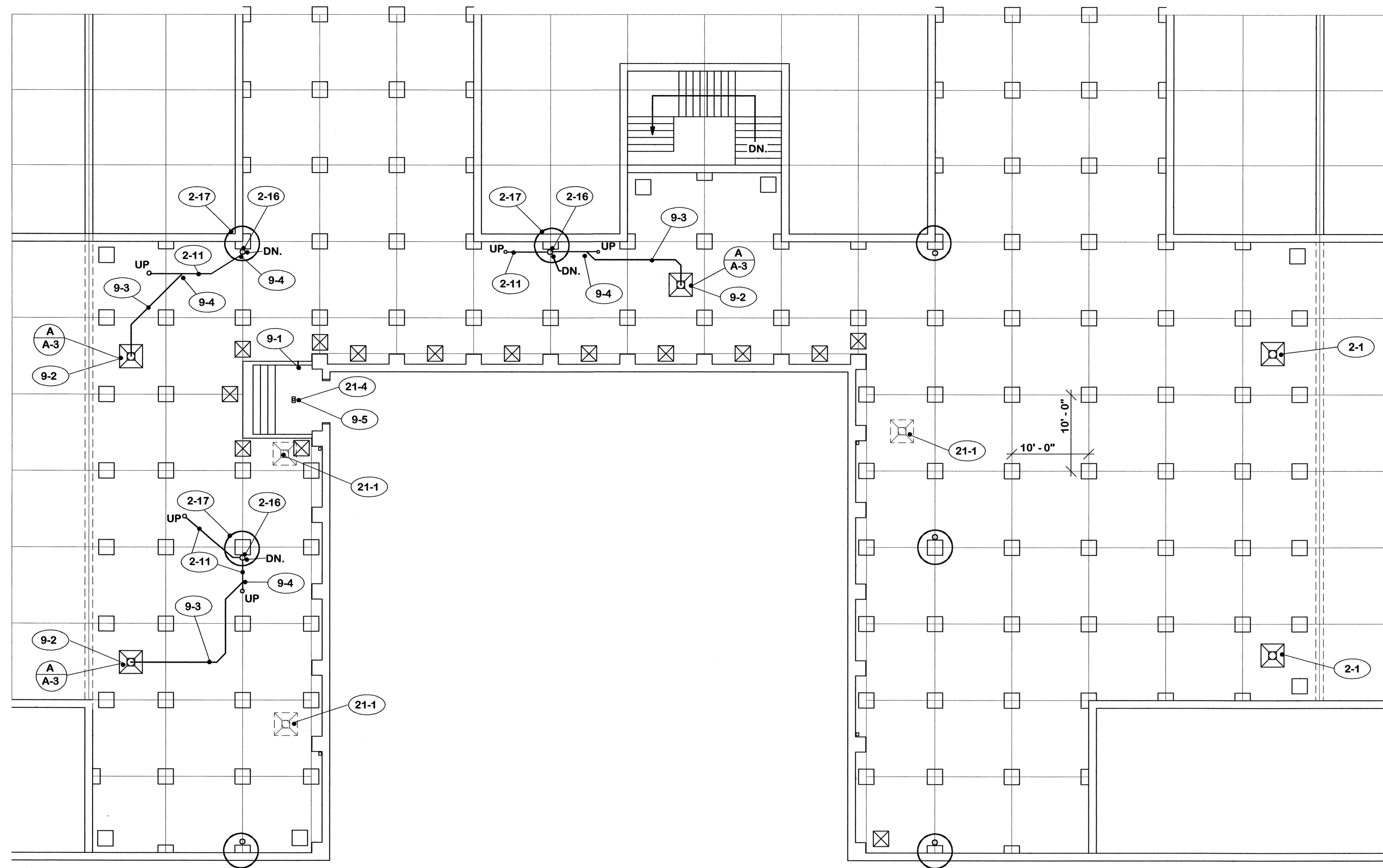
- 7. INSULATION**
- 7-1 2 layers 1 1/2" rigid insulation.
 - 7-2 Tapered insulation - 1/4" per foot slope.
 - 7-3 1/2" wood fiber over-lay board.
 - 7-4 1 layer 1 1/2" rigid insulation.
 - 7-5 Insulation fill.

- 9. PLUMBING**
- 9-1 Plug existing pipe through wall.
 - 9-2 Move existing roof drain to this location.
 - 9-3 4" PVC pipe.
 - 9-4 Connect to existing downspout line.
 - 9-5 Zurn No. Z-415-9J-4" floor drain with 5" x 9" strainer.

- 72. ROOFING**
- 72-1 Prime all surfaces to receive new roofing materials.
 - 72-2 Base Ply (Modified Bitumen) Hot mop to venting base sheet.
 - 72-3 Seal base ply around all roof protrusions.
 - 72-4 Do not mop base ply to cant strip.
 - 72-5 Base Ply (Strip) Flashing (Modified Bitumen) Hot mop over top of curbs.
 - 72-6 Cap Sheet - Modified bitumen with granule surface. Adhesive applied.
 - 72-7 Cap Sheet Flashing - metal foil face modified bitumen sheet. Secure with adhesive.
 - 72-8 Nail maximum 12" on center.
 - 72-9 Caulk continuous or all around.
 - 72-10 Venting base sheet.
 - 72-11 Mechanical fasteners.
 - 72-12 Modify existing downspout to detail.
 - 72-13 Strap anchor.
 - 72-14 Section of cap sheet flashing to detail.
 - 72-15 Fold diverter strip to detail.

ROOF REPLACEMENT AT YMCA CAPITAL PLAZA COMPLEX FRANKFORT, KENTUCKY		DRAWING NO. A-3
ROOF PLAN -- LARGE SCALE		OF 8
COMMONWEALTH OF KENTUCKY FINANCE AND ADMINISTRATION CABINET DEPARTMENT FOR FACILITIES MANAGEMENT DIVISION OF ENGINEERING FRANKFORT, KENTUCKY		REVIEWED DATE OF INGR. 3/7/05
WILLIAM C. MARTIN, P.S.C. ARCHITECTS-ENGINEERS 620 EUCLID AVENUE LEXINGTON, KENTUCKY		ENR FILE NO. FPYM0030
AS BUILT DATE:	573-86	DATE: 18 Feb. 2005
DRAWN BY: M	CHECKED BY: M	AGENCY AUTHORIZED AGENT: _____ DATE: _____
REV. DATE DESCRIPTION	APPROVED FOR PROGRAM CONCEPT ONLY	
		DATE: 3/7/05

CPA 928



PLUMBING PLAN 1/8" = 1'-0"

2. **EXISTING TO REMAIN**
- 2-1 Roof drains.
 - 2-2 Insulation.
 - 2-3 Roofing.
 - 2-4 Fixed piers.
 - 2-5 Precast concrete panels.
 - 2-6 Downspouts.
 - 2-7 Doors and frames.
 - 2-8 Pipe rails.
 - 2-9 Concrete slab.
 - 2-10 Concrete steps.
 - 2-11 Drain pipe.
 - 2-12 Expansion joint.
 - 2-13 Concrete block wall.
 - 2-14 Concrete wall.
 - 2-15 Gymnasium floor.
 - 2-16 Cast iron drain pipe.
 - 2-17 Column below.

9. **PLUMBING**


- 9-1 Plug existing pipe through wall.
- 9-2 Move existing roof drain to this location.
- 9-3 4" PVC pipe.
- 9-4 Connect to existing downspout line.
- 9-5 Zurn No. Z-415-9J-4" floor drain with 5" x 9" strainer.

		ROOF REPLACEMENT AT YMCA CAPITAL PLAZA COMPLEX FRANKFORT, KENTUCKY	
		PLUMBING PLAN	
		COMMONWEALTH OF KENTUCKY FINANCE AND ADMINISTRATION CABINET DEPARTMENT OF FACILITIES MANAGEMENT DIVISION OF ENGINEERING FRANKFORT, KENTUCKY	
		WILLIAM C. MARTIN, P. S. C. ARCHITECTS-ENGINEERS 630 EUCLID AVENUE LEXINGTON, KENTUCKY	
		APPROVED FOR PROGRAM CONCEPT ONLY	
		DATE 3/7/05	

AS BUILT DATE:	
DRAWN BY:	M
CHECKED BY:	M
A & B FILE:	
DATE:	18 Feb. 2005

REV.	DATE	DESCRIPTION

DRAWING NO.	A-7
OF	8
REVIEWED BY:	3/7/05
ENG. FILE NO.	FPYM0030



AGENCY AUTHORIZED AGENT _____ DATE _____

DIVISION OF ENGINEERING _____ DATE 3/7/05

CPI-932