

SCHEDULE OF DRAWINGS

A-1 PLANS AND DETAILS

A-2 DETAILS

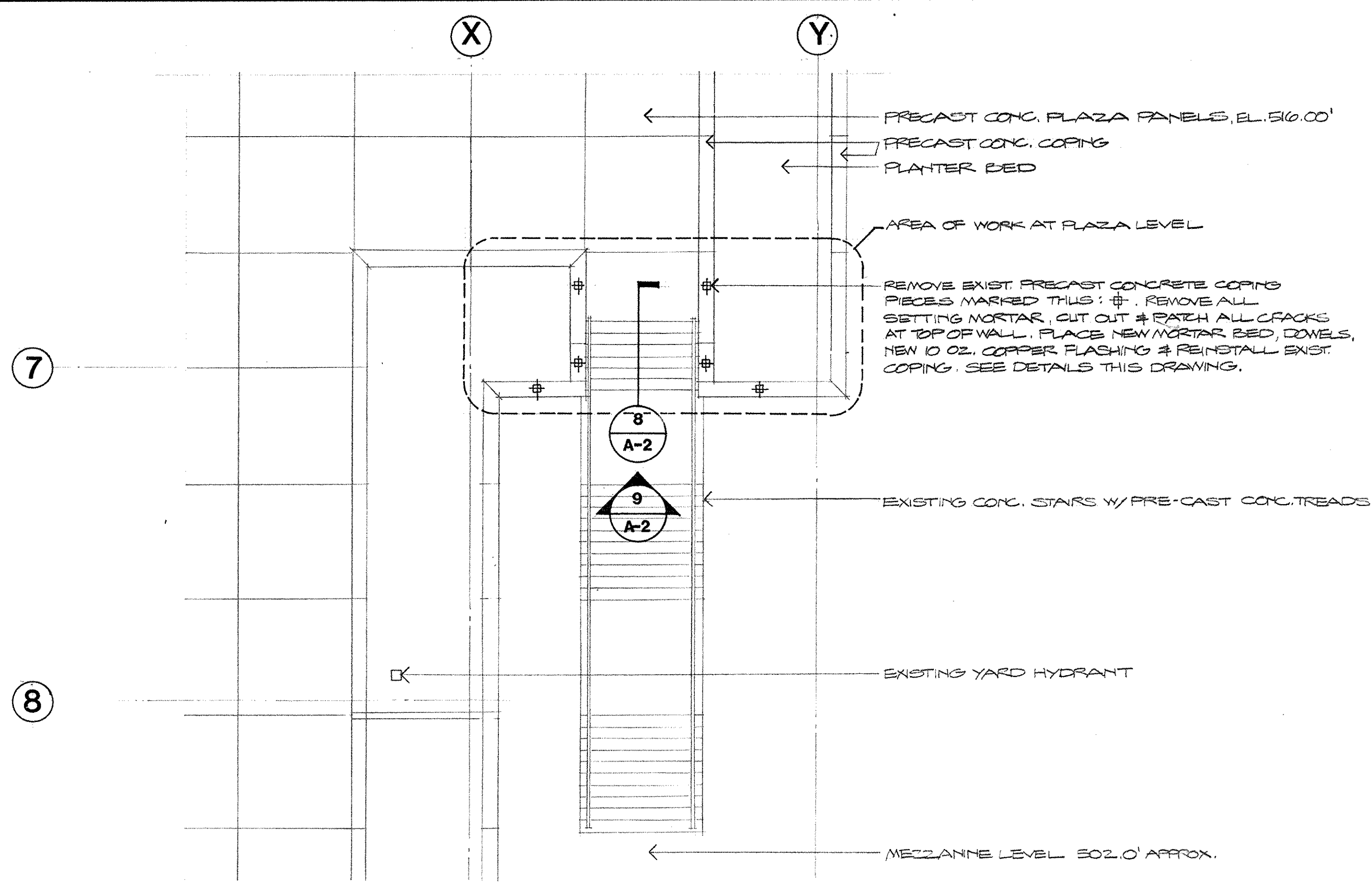
**COMMONWEALTH OF KENTUCKY
JOHN Y. BROWN, JR., GOVERNOR**

**DEPARTMENT OF FINANCE
OFFICE FOR FACILITIES MANAGEMENT
DIVISION OF ENGINEERING
ENG. FILE NO. M-219-16**

**ROOF REPAIRS
CAPITAL PLAZA COMMERCIAL AREA
FRANKFORT, KENTUCKY**

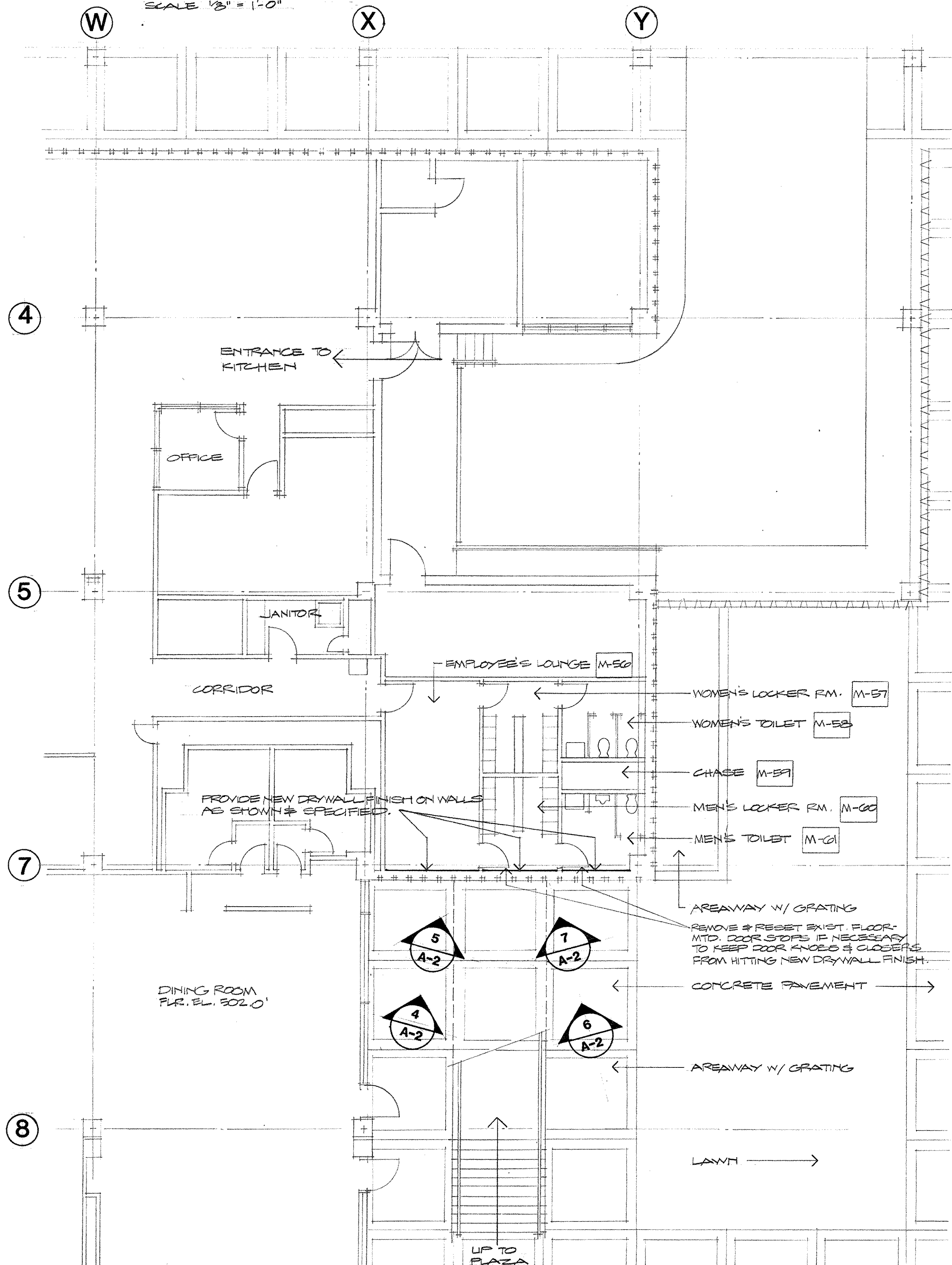
**LOUIS RYAN HUGG, JR., A.I.A.
ARCHITECT
314 WILKINSON ST., FRANKFORT, KY. 40601**

CPA-652



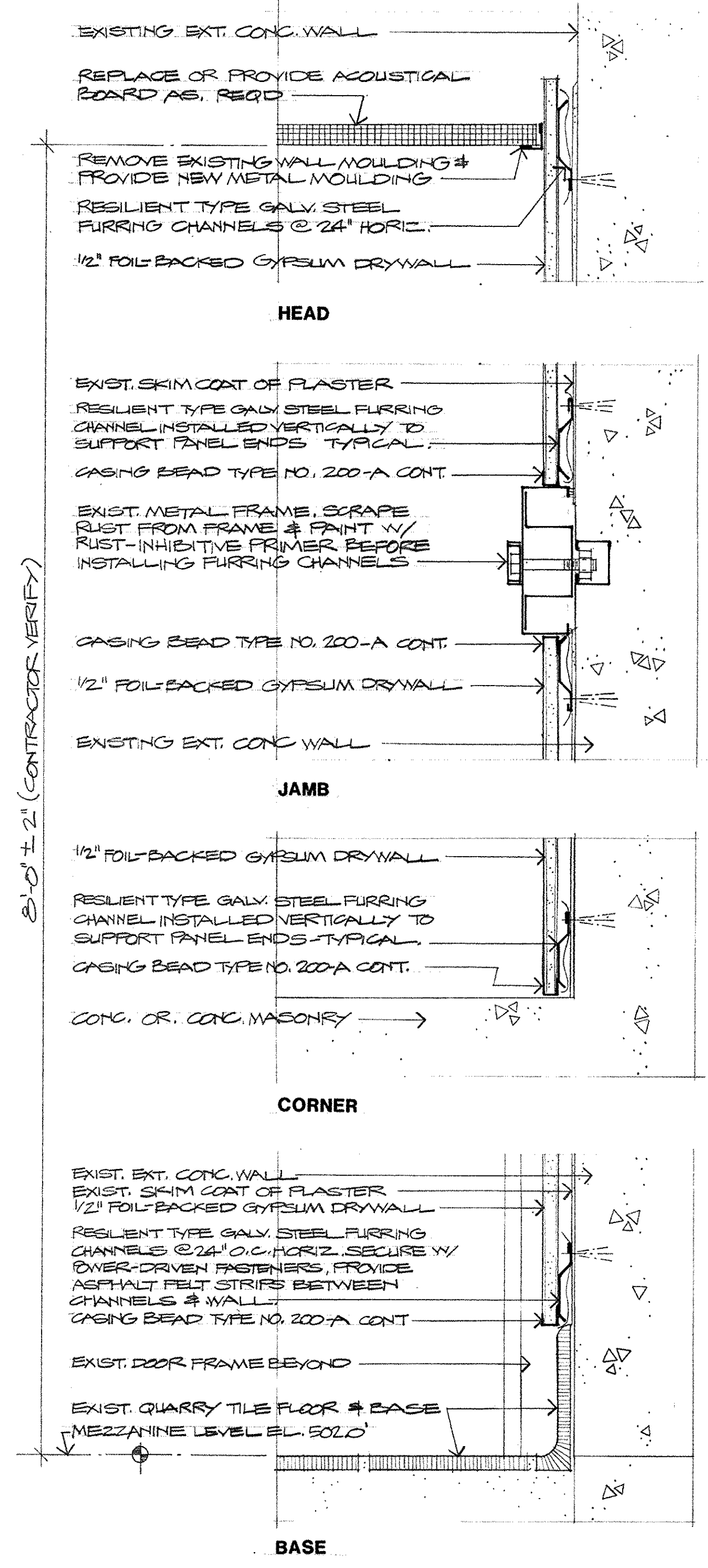
PLAZA LEVEL PLAN

SCALE 1/8" = 1'-0"



MEZZANINE LEVEL PLAN

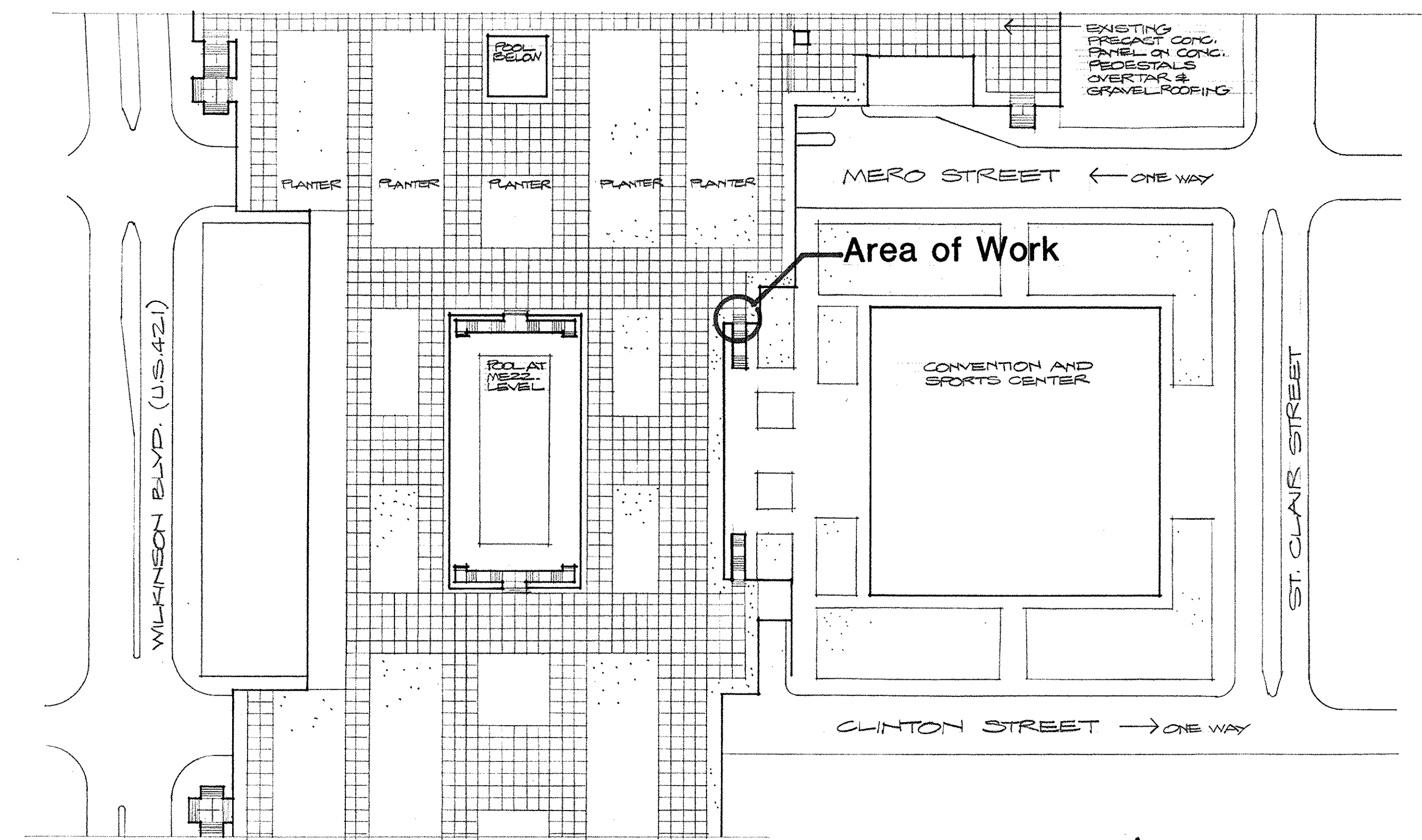
SCALE 1/8" = 1'-0"



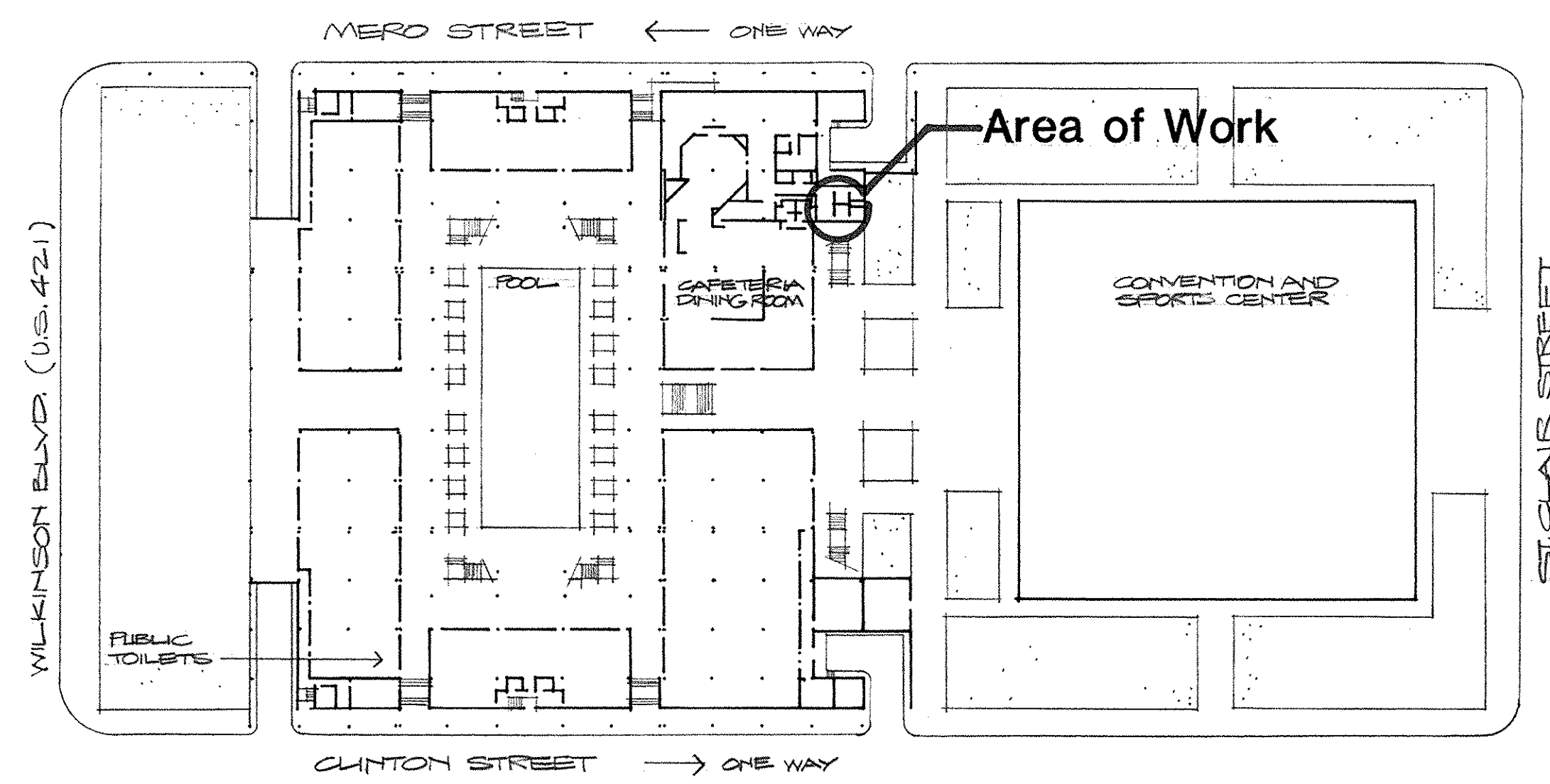
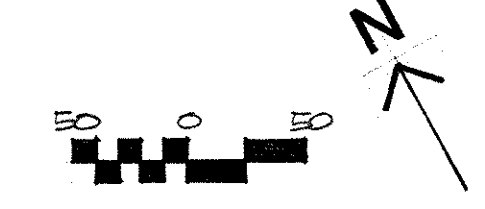
DRYWALL DETAILS

SCALE: 1/8" = 1'-0"

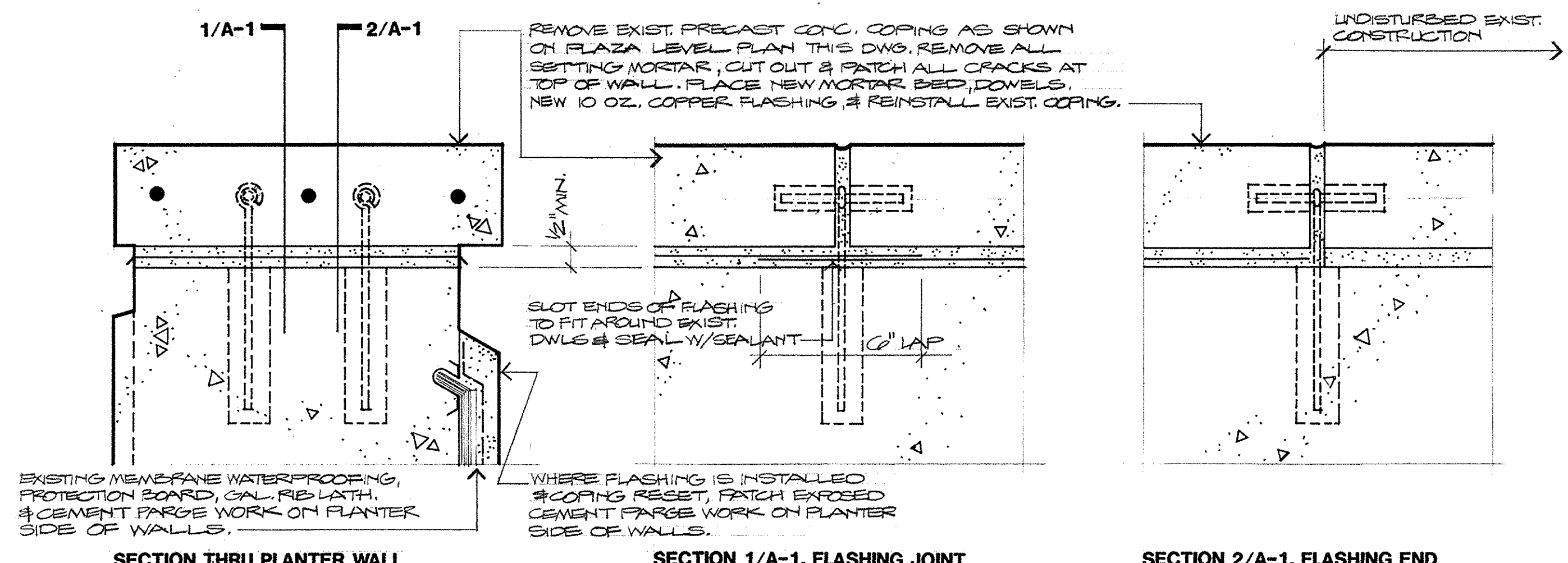
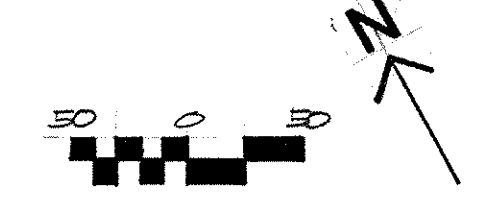
NOTE: THE CONTRACTOR USED STD. HAT-SHAPED GALV. FURRING CHANNELS, 1/2" DEEP INSTEAD OF 1/2" DEEP RESILIENT CHANNELS SHOWN. S-25-31/L/HUGG



LOCATION PLAN - PLAZA LEVEL



LOCATION PLAN - MEZZANINE LEVEL



DETAILS - NEW FLASHING AT EXISTING COPING

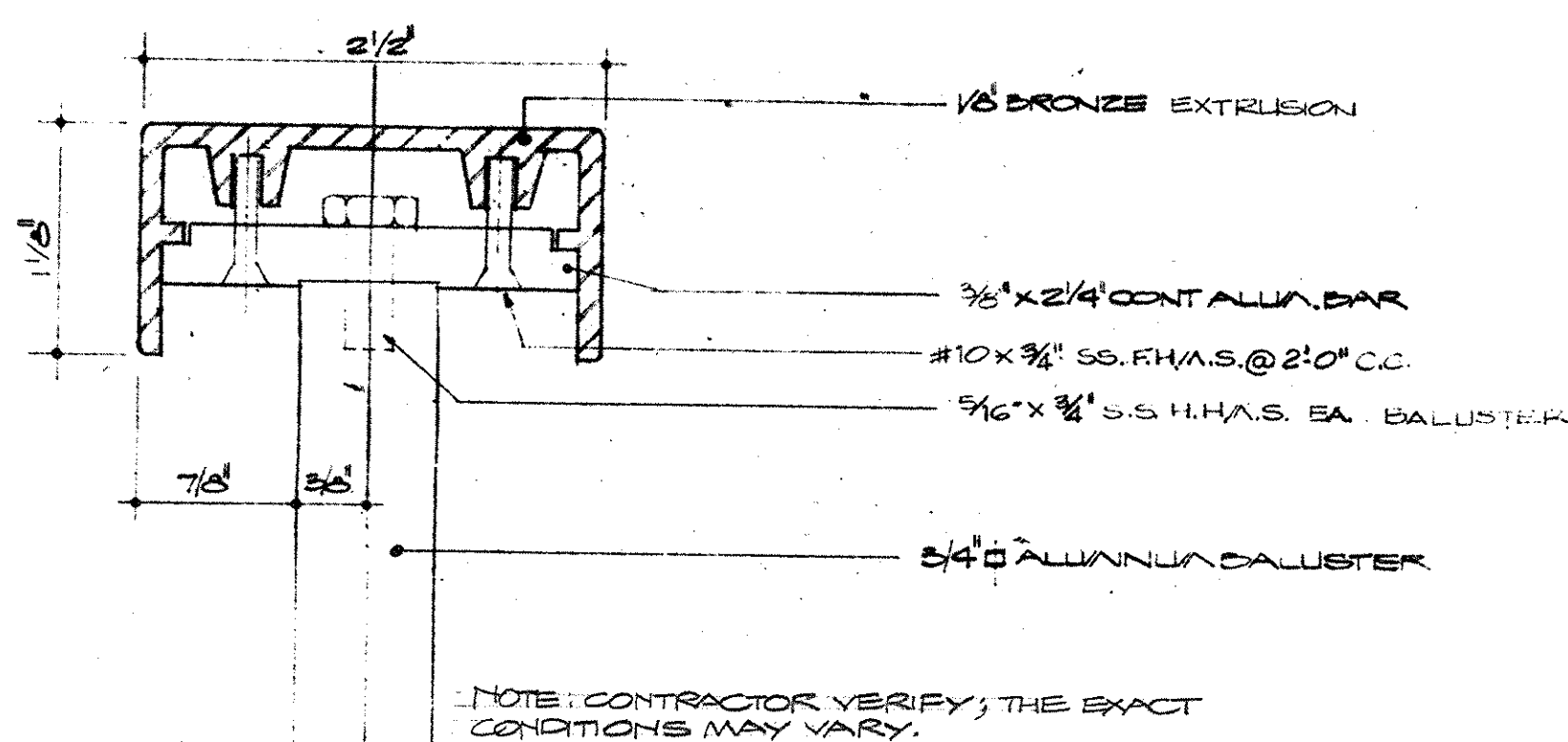
SCALE: 1/8" = 1'-0"

NOTE: SEE S/A-2 FOR DETAILS OF EXISTING COPING CONSTRUCTION.

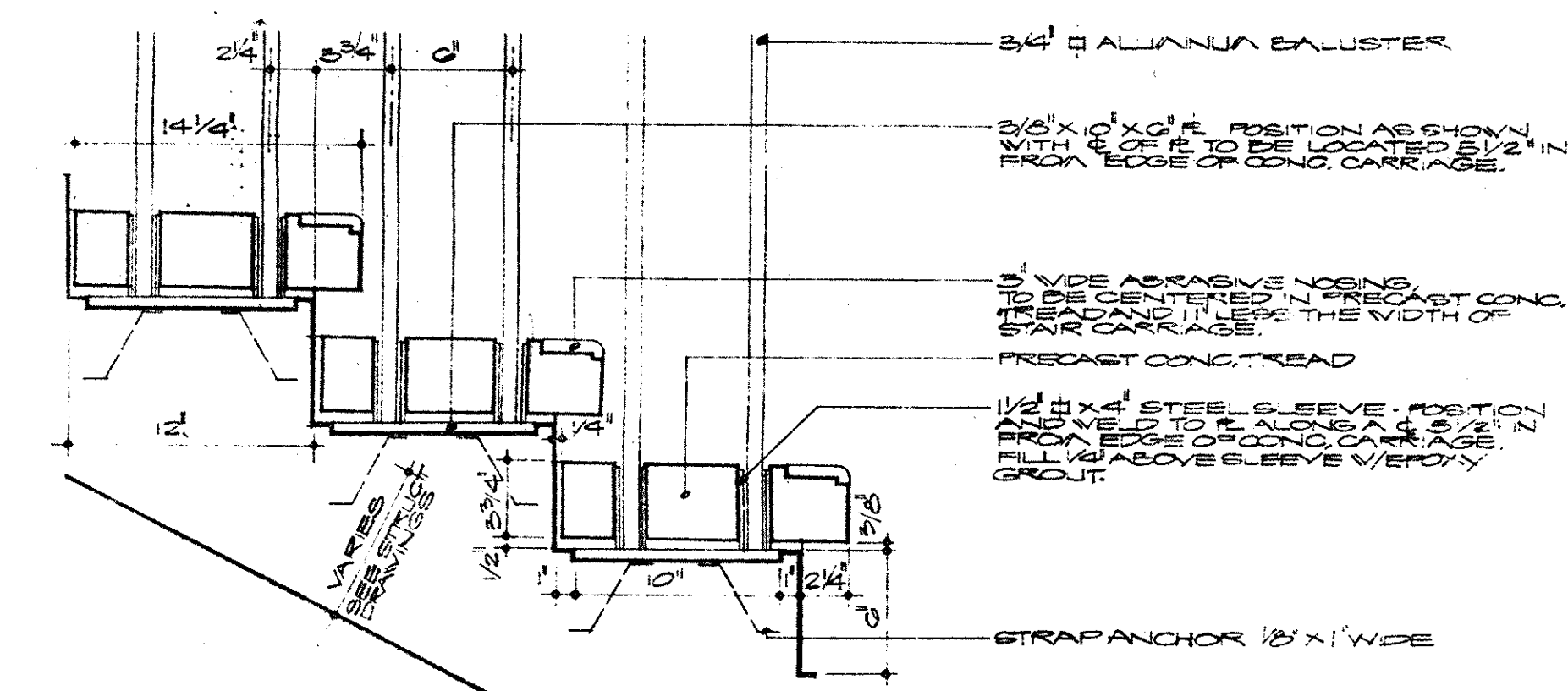
NOTE: BECAUSE 'EXISTING' DOWELS WERE MISSING WHEN COPING WAS REMOVED, CONTRACTOR PROVIDED AT LEAST TWO 1/2" DIA. STAINLESS STEEL DOWELS PER COPING PIECE, SET AS SHOWN FOR STAIR TREADS. DWG. A-2. S-25-31/L/HUGG

		PLANS AND DETAILS		Drawing No.
		ROOF REPAIRS CAPITAL PLAZA COMMERCIAL AREA FRANKFORT, KENTUCKY		A-1
Commonwealth of Kentucky Department of Finance Office for Facilities Management Division of Engineering, Frankfort, Kentucky		Louis Ryan Hugg, Jr., Architect 314 Wilkinson Street Frankfort, Kentucky 40601		or 2 Date March 30, 1981 Record Drawing Date S-25-31/L/HUGG Engr. File No. M-219-16 Reviewed Div. Of Engr. REL For Index Only
Agency Authorized Agent [Signature] Chief Architect, Div. Of Engr.		Approved for Program Concept Only [Signature] Approved for Program Concept Only		Date 4-7-81 Date

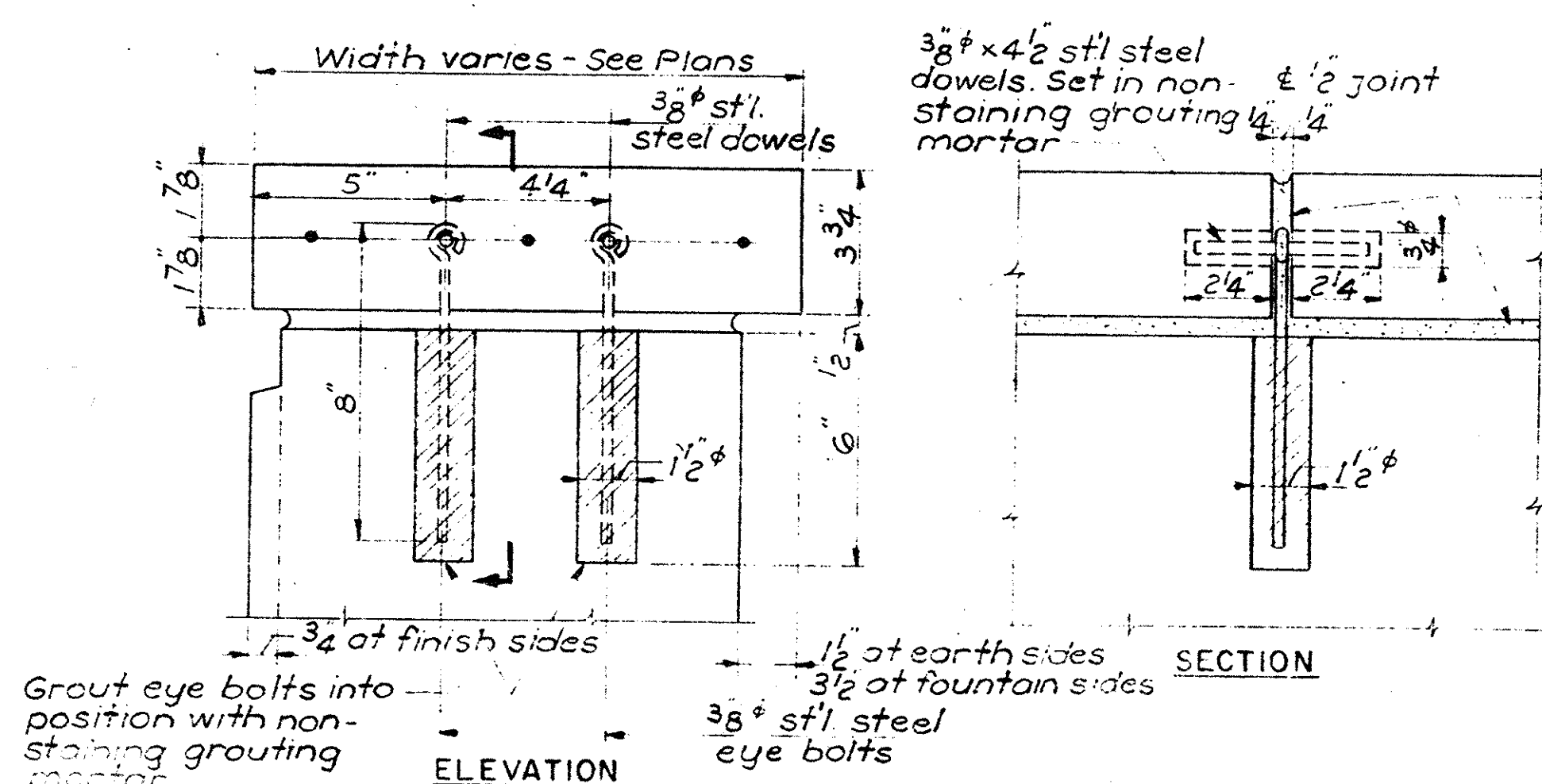
CPA-653



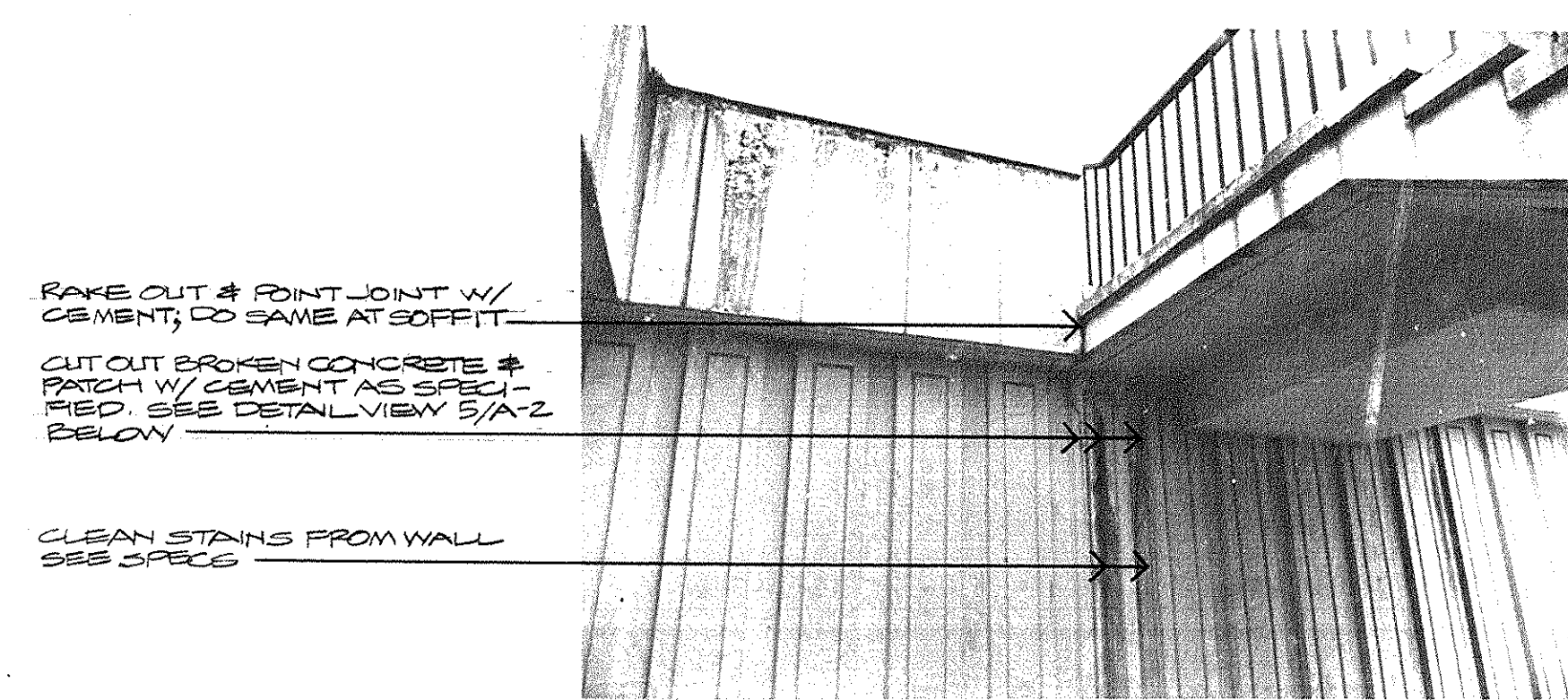
1
A-2 **DETAIL - EXISTING HANDRAIL**
FULL SCALE



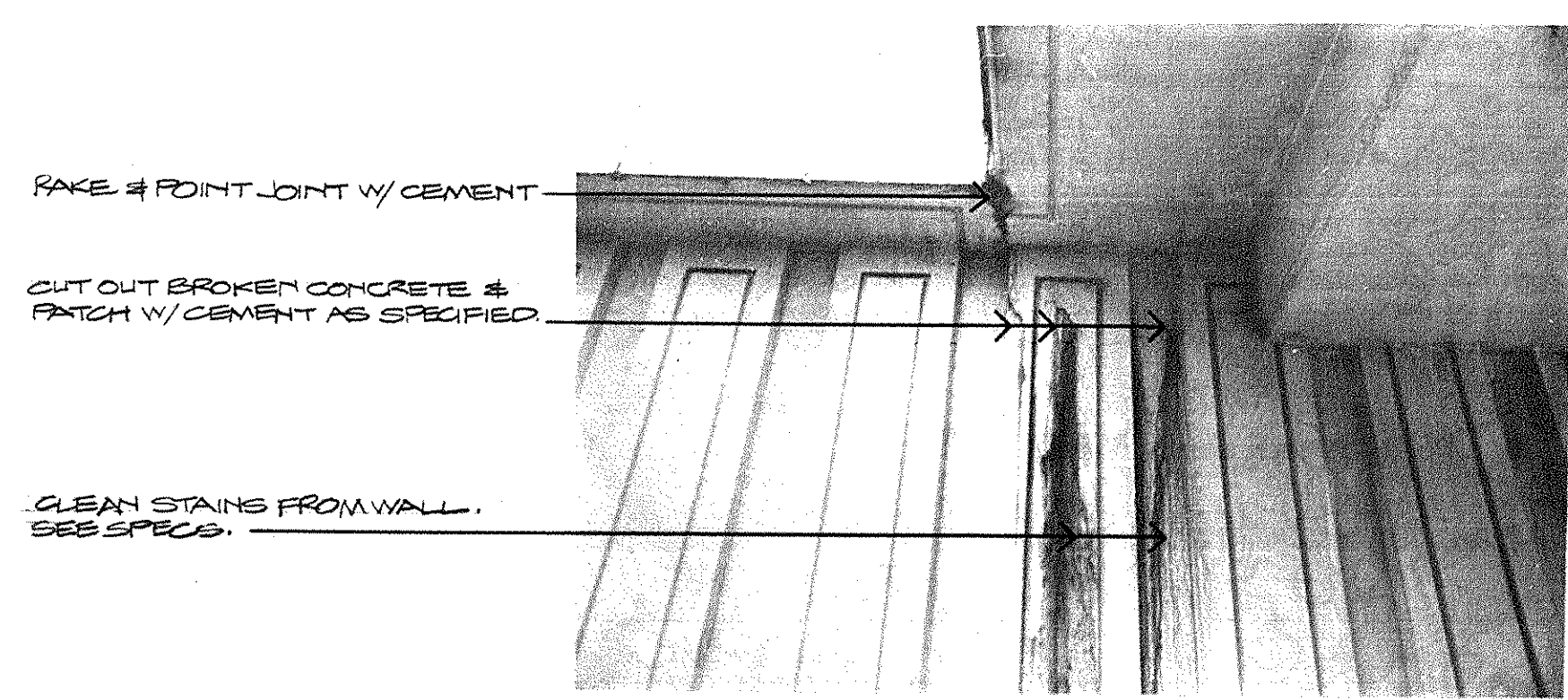
2
A-2 **DETAIL - EXIST. STAIR CONSTRUCTION**
SCALE: 1/2" = 1'-0"



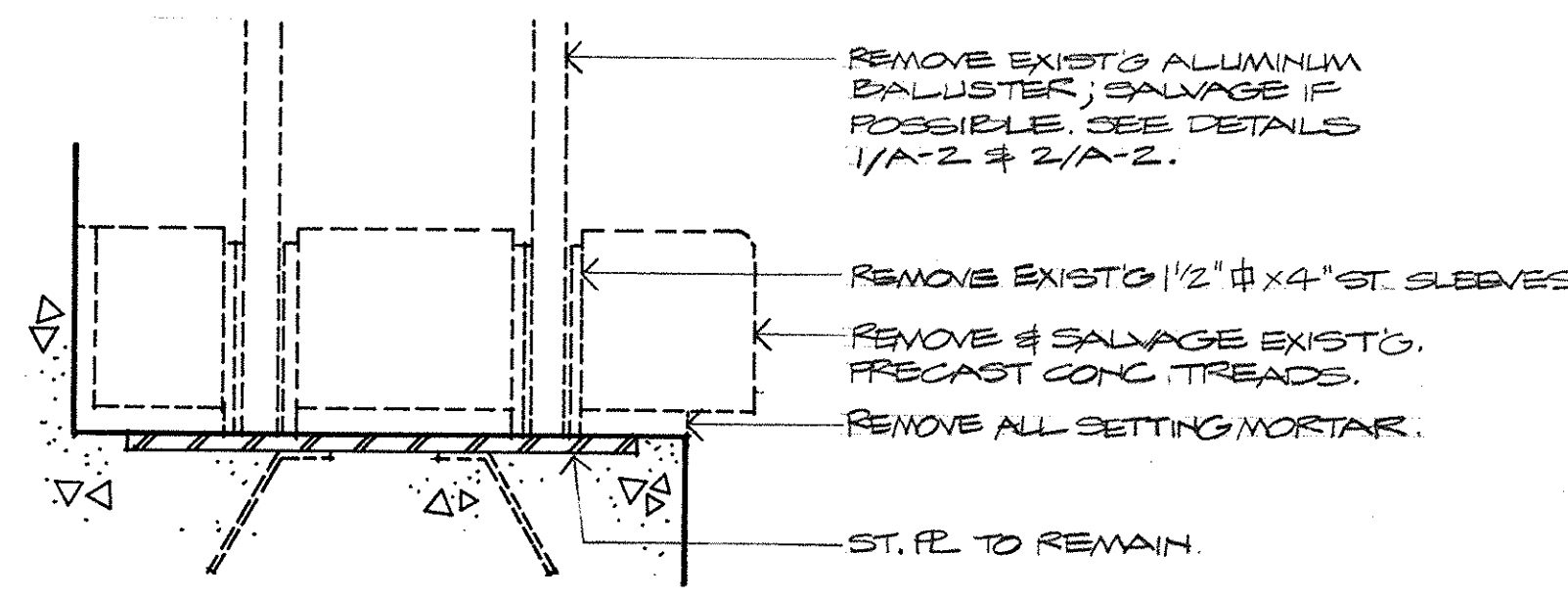
3
A-2 **DETAILS - EXIST. COPING CONSTRUCTION**
SCALE: 3/4" = 1'-0"



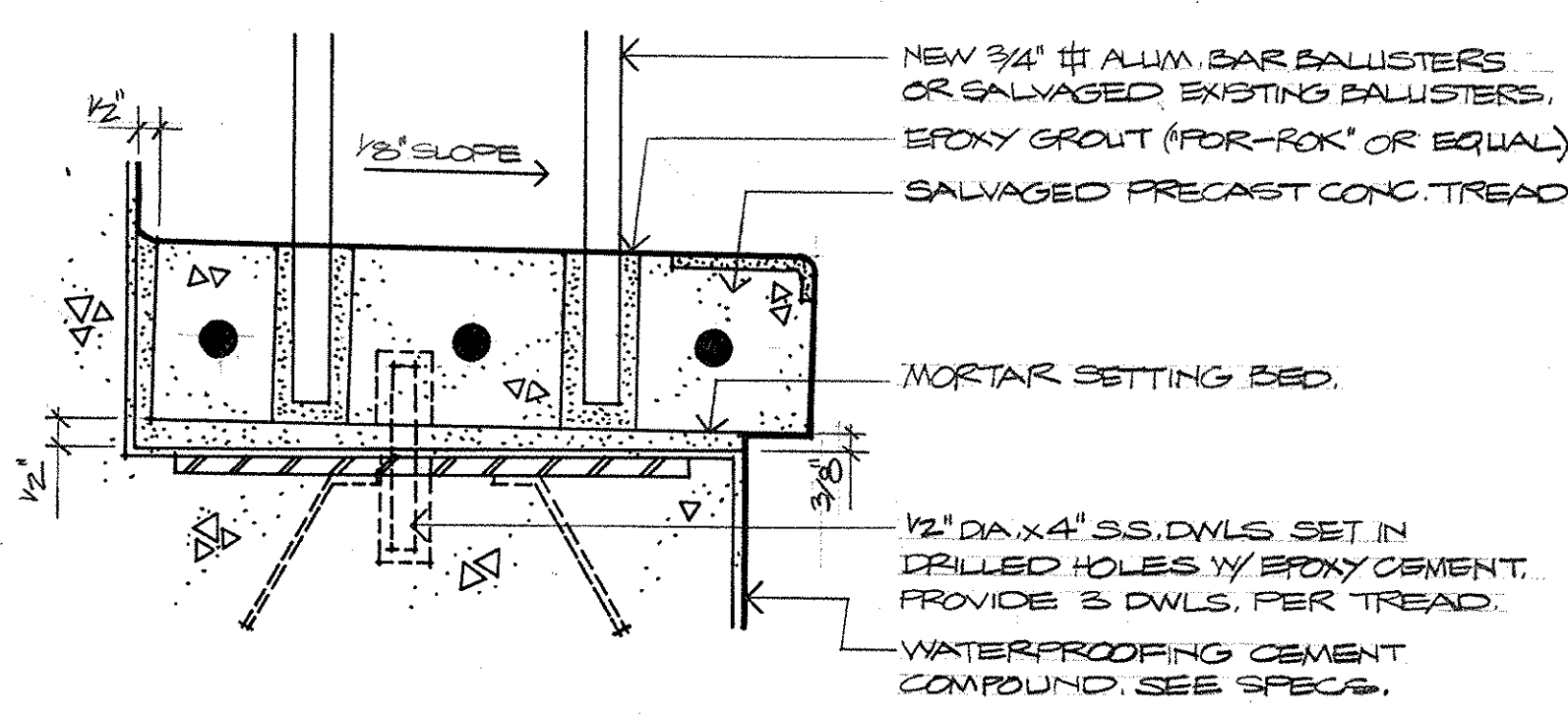
4
A-2 **DETAIL VIEW**



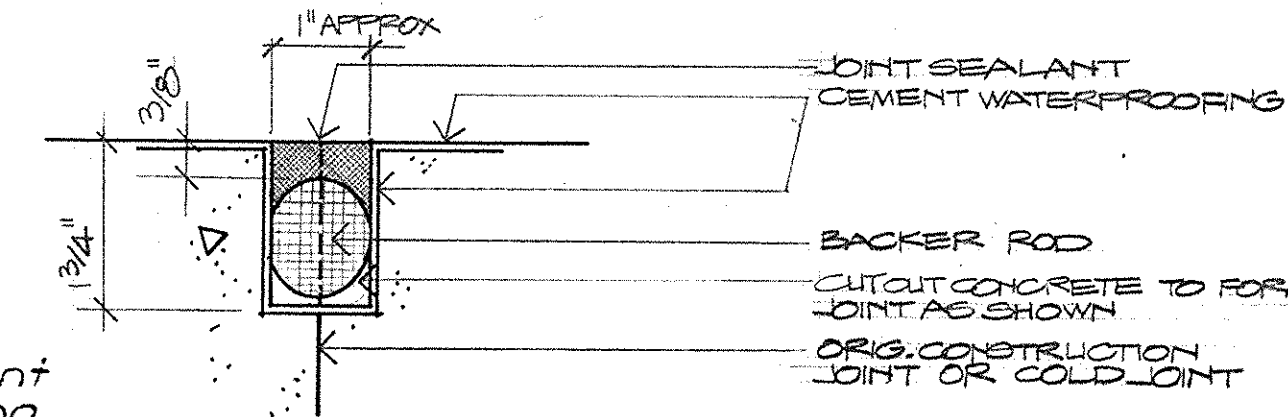
5
A-2 **DETAIL VIEW**



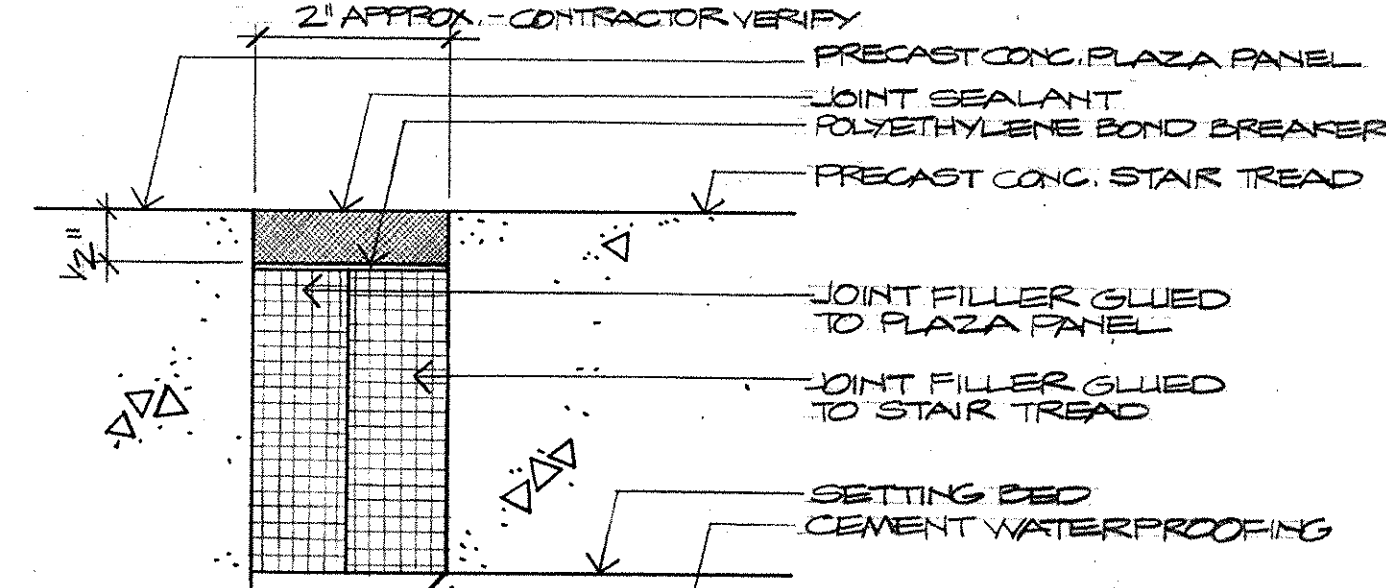
DETAIL - EXISTING TREAD REMOVAL
SCALE: 3/4" = 1'-0"



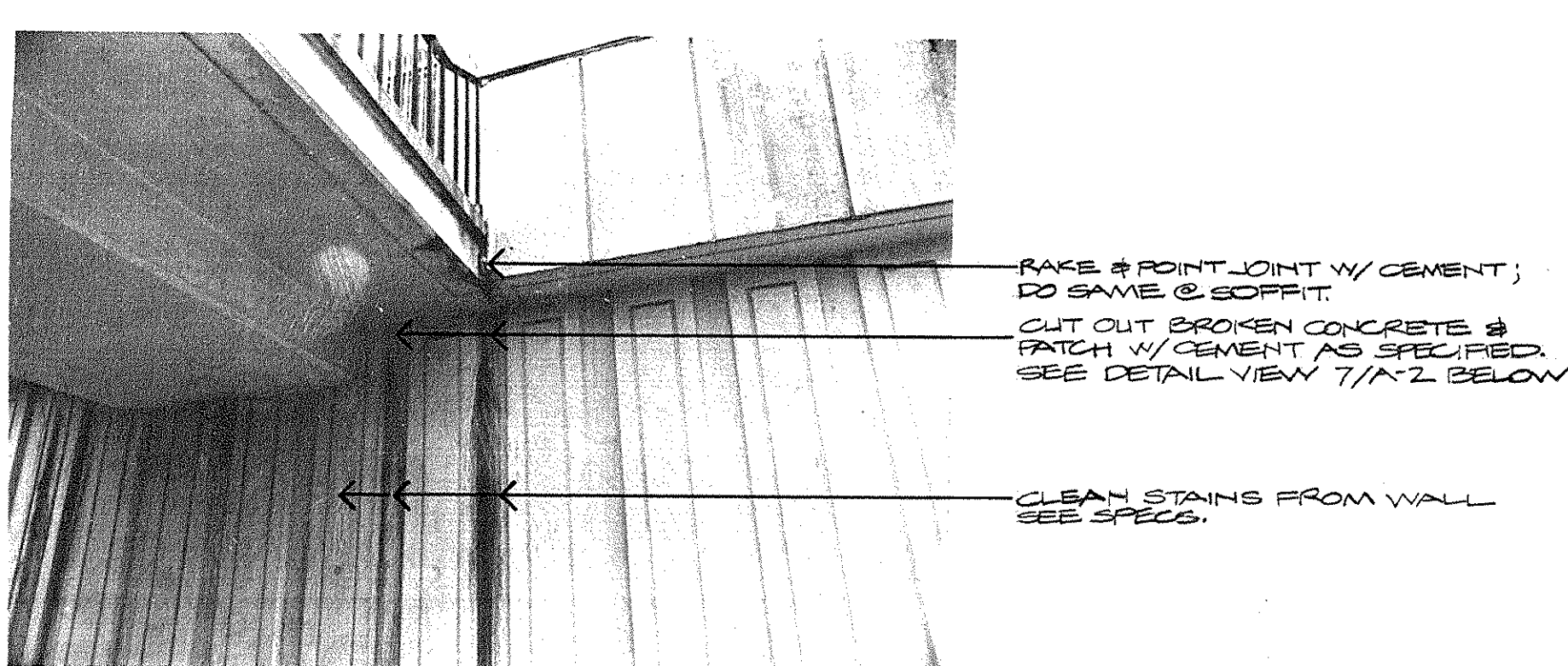
DETAIL - SETTING NEW TREADS
SCALE: 3/4" = 1'-0"



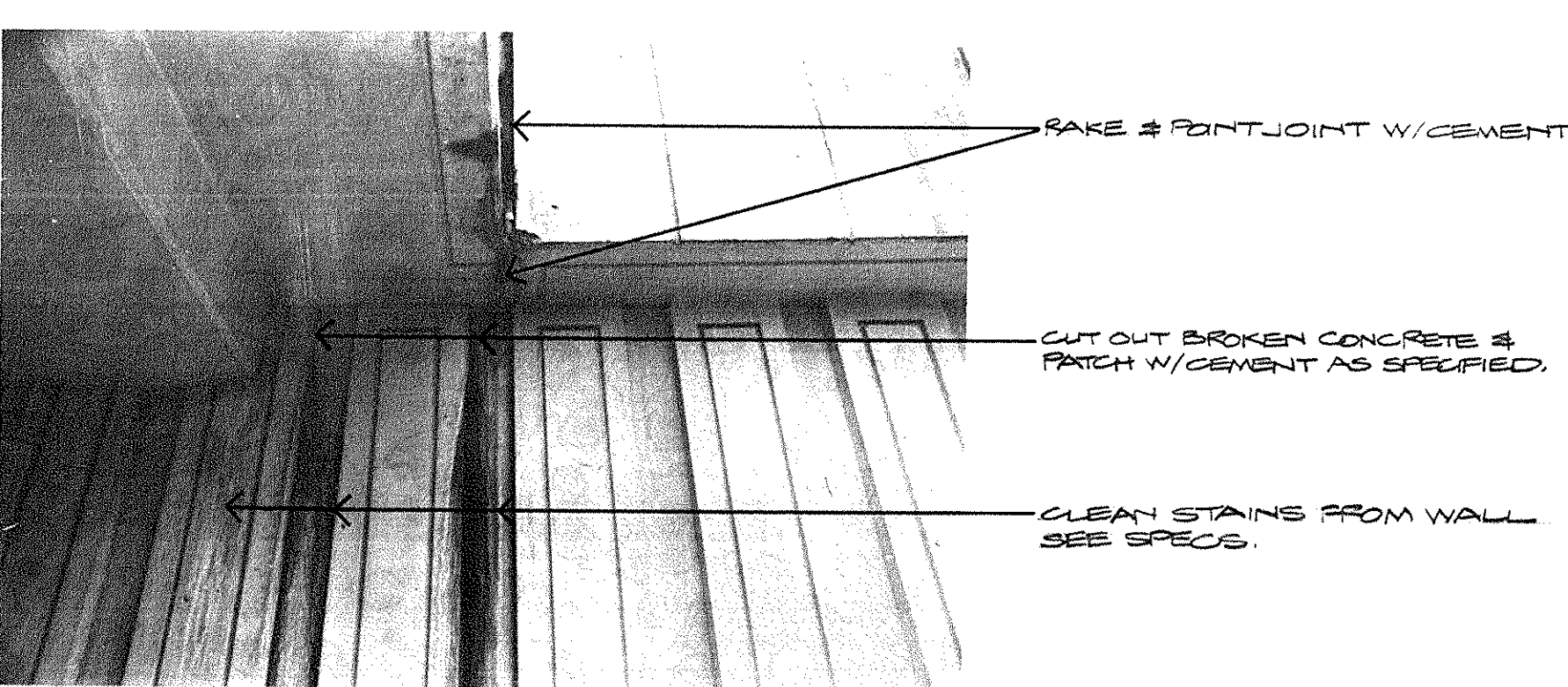
DETAIL - EXP'N JOINT A
SCALE: HALF SIZE



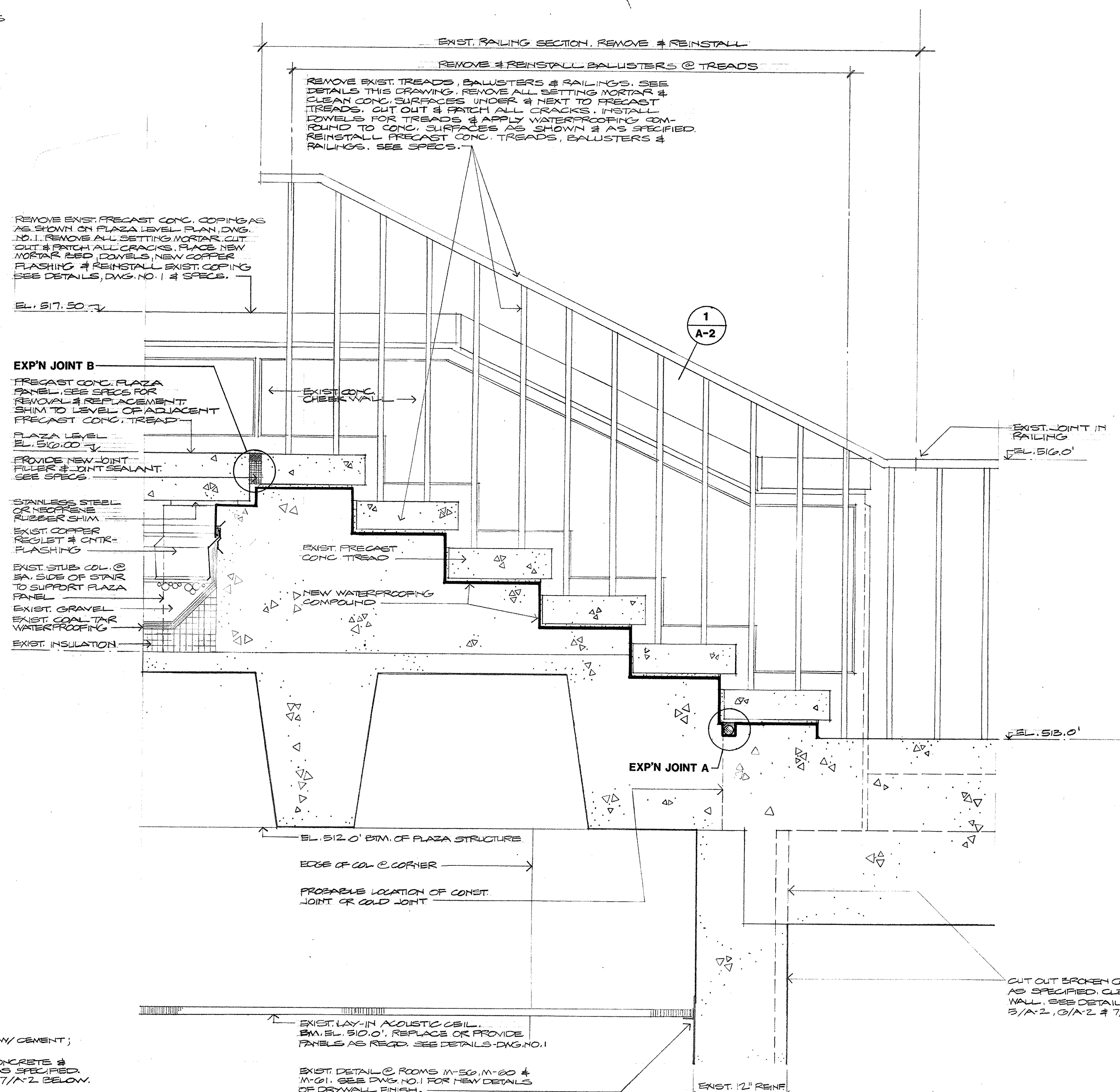
DETAIL - EXP'N JOINT B
SCALE: HALF SIZE



6
A-2 **DETAIL VIEW**



7
A-2 **DETAIL VIEW**



8
A-2 **SECTION THRU STAIRS**
SCALE: 1/2" = 1'-0"

REVISED 3-25-81 TO SHOW ACTUAL CONDITION AT HEAD OF STAIR 'GARAGE' AND THE ACTUAL LOCATION OF EXP'N JOINT A - HUGG.



9
A-2 **DETAIL VIEW**

		DETAILS		Drawn No.
		ROOF REPAIRS CAPITAL PLAZA COMMERCIAL AREA FRANKFORT, KENTUCKY		A-2
Commonwealth of Kentucky Department of Finance Office for Facilities Management Division of Engineering, Frankfort, Kentucky		Date	March 30, 1981	
Louis Ryan Hugg, Jr., Architect 314 Wilkinson Street Frankfort, Kentucky 40601		Record Drawing Date	3-25-81/HUGG	
Agency Authorized Agent		Approved for Program Concept Only	Date	4-7-81
Chief Architect, Div. of Engr.		Approved for Program Concept Only	Date	

CPA-654