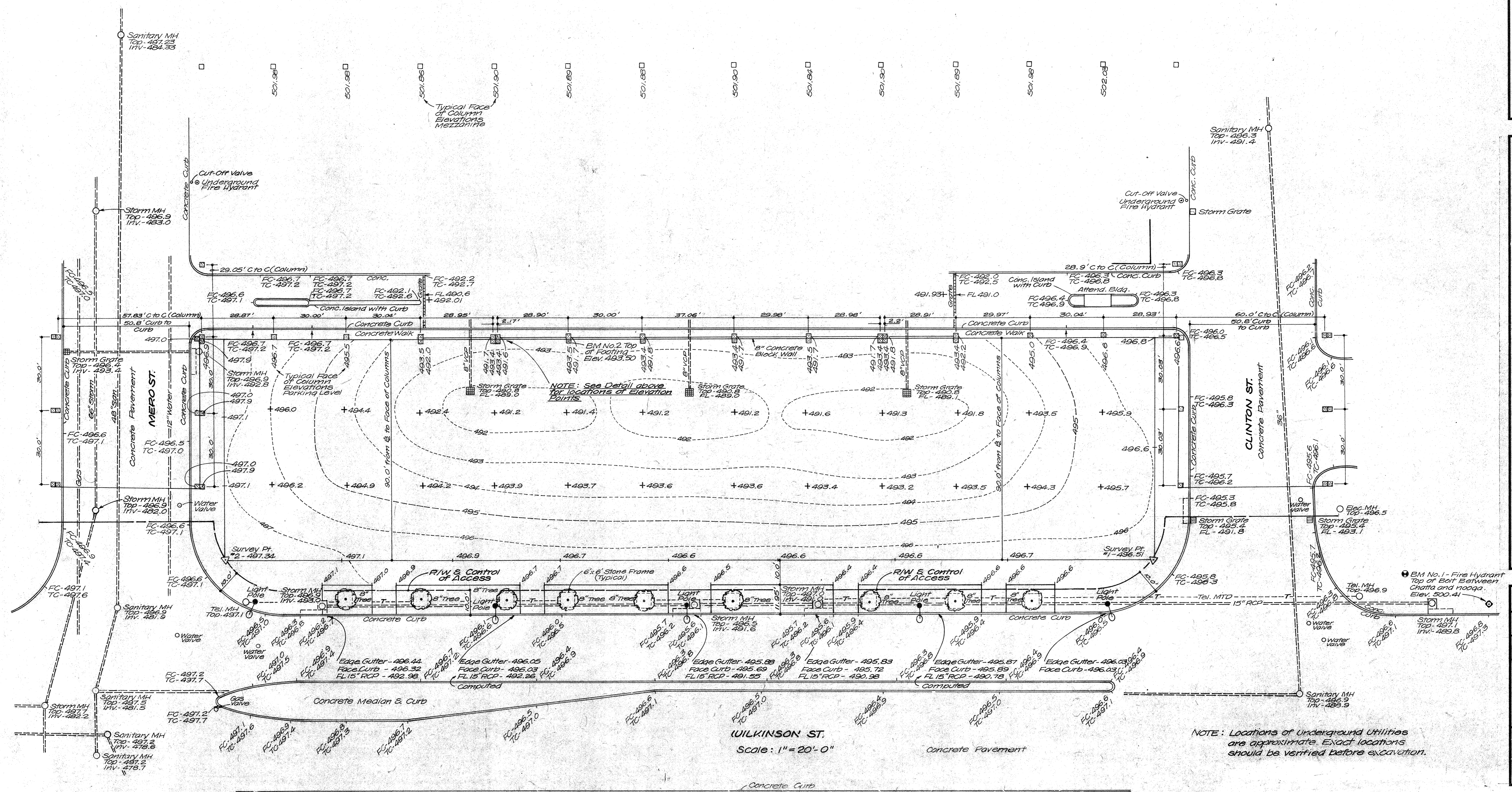
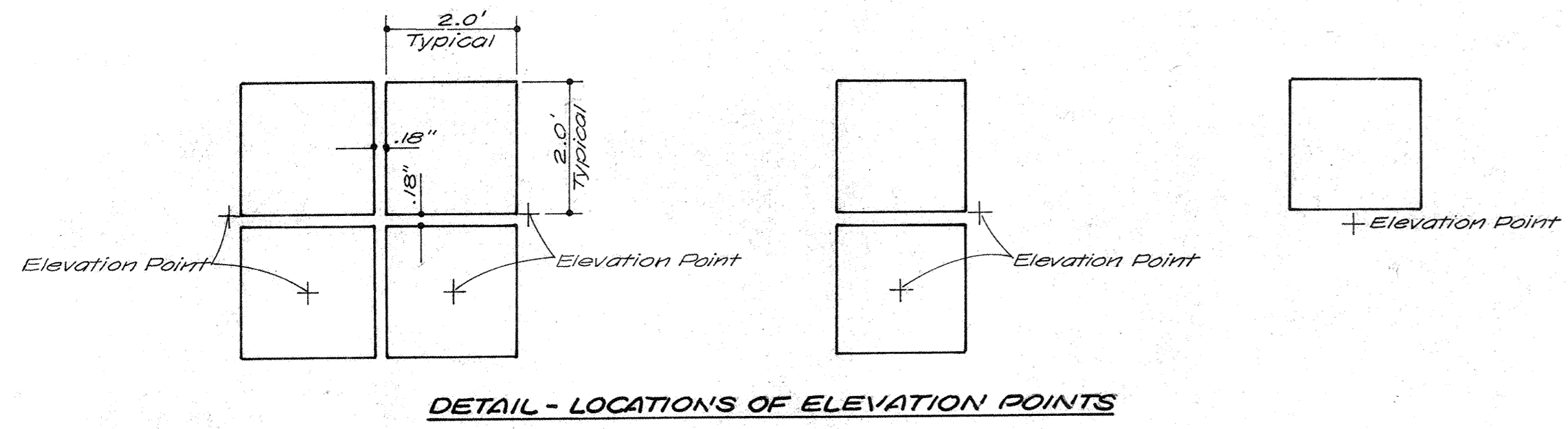


DRAWN PROJECT
8228

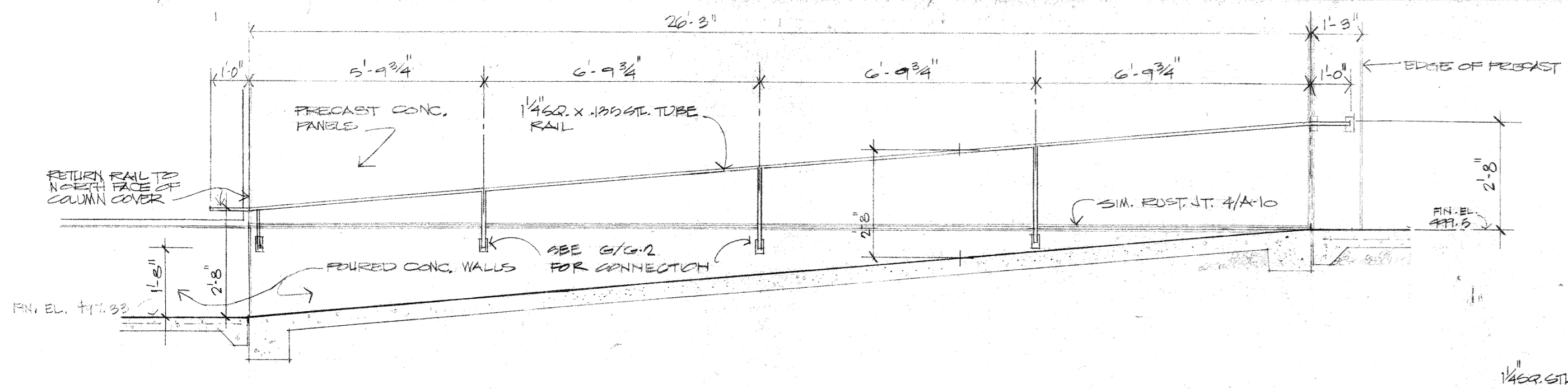
CHECKED DATE
6.10.82

GEOLOGICAL
SITE SURVEY

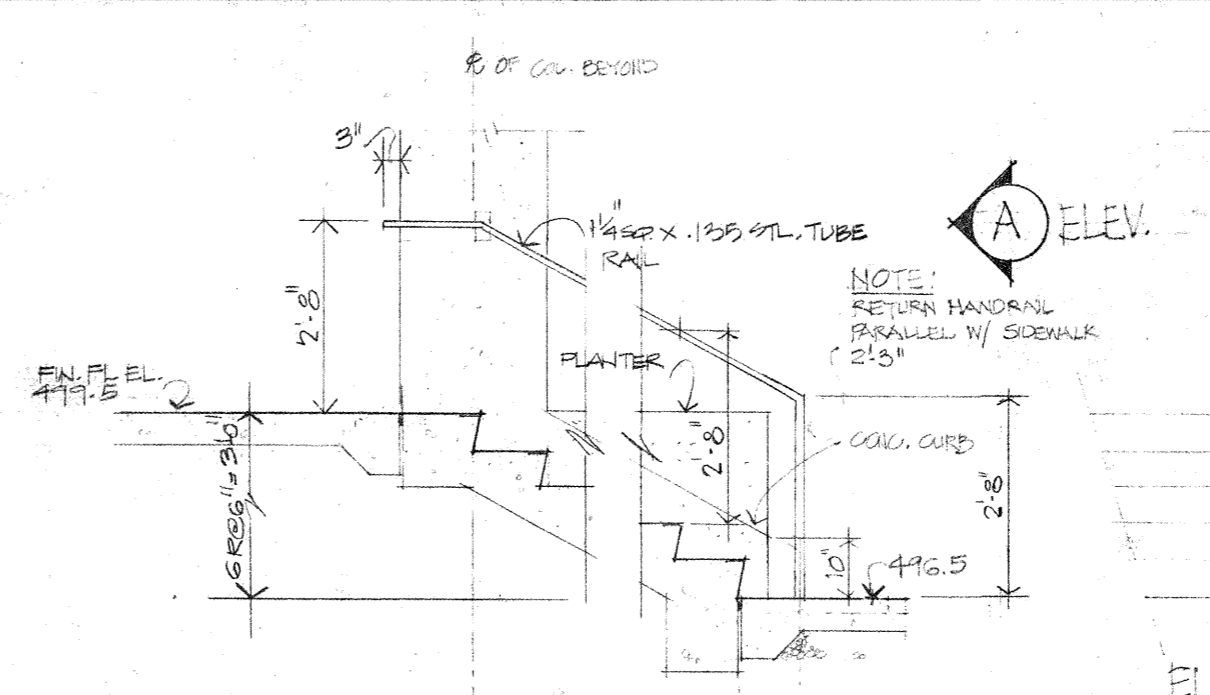
DRAWING
G-1



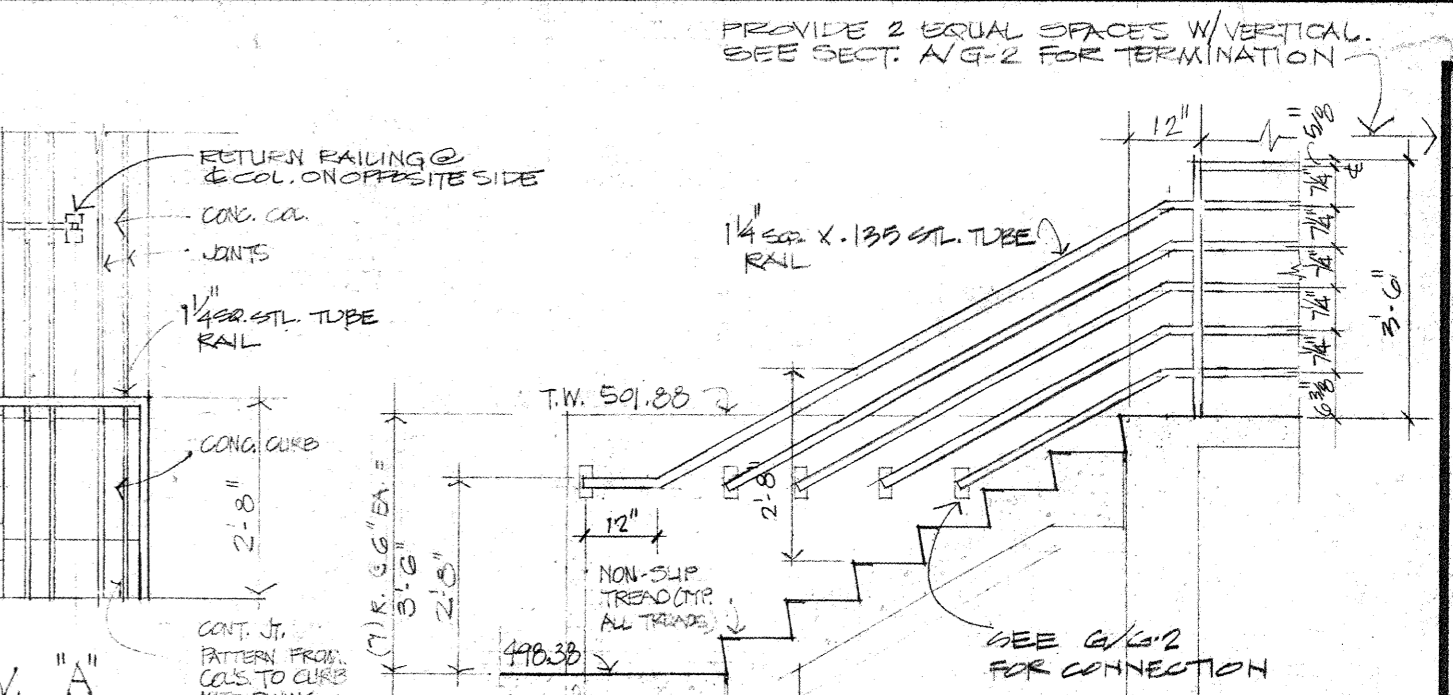
WILKINSON ST.
Scale: 1" = 20'-0"



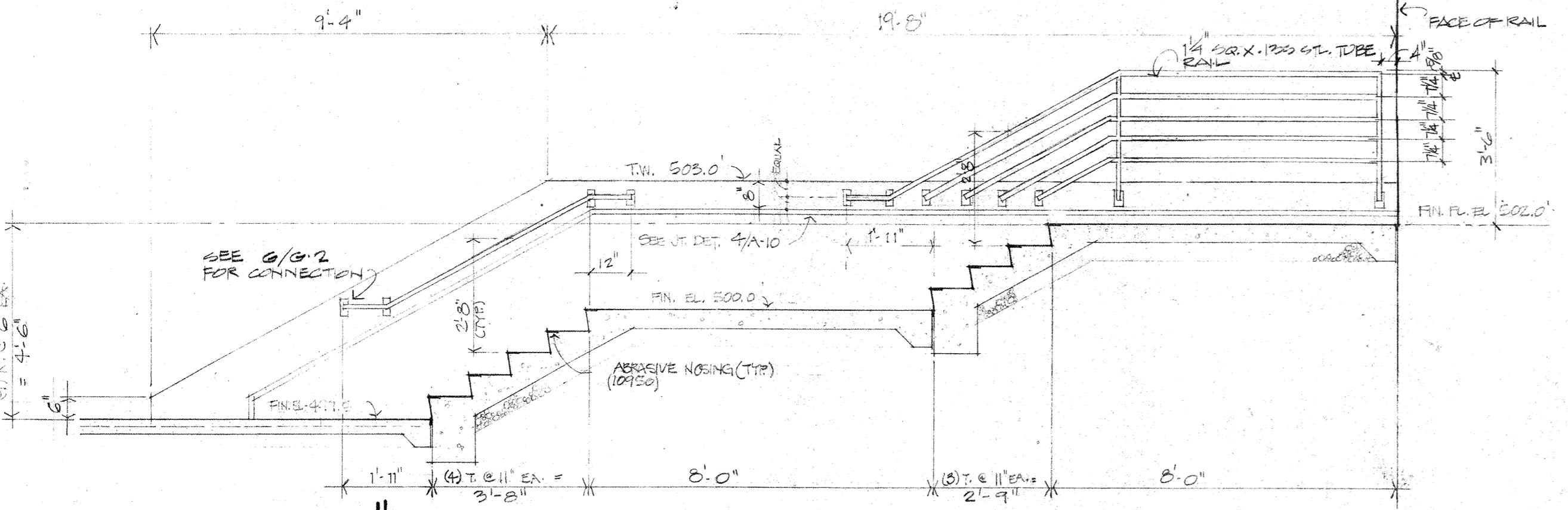
SECTION THRU RAMP (B)
SCALE: 3/8" = 1'-0"



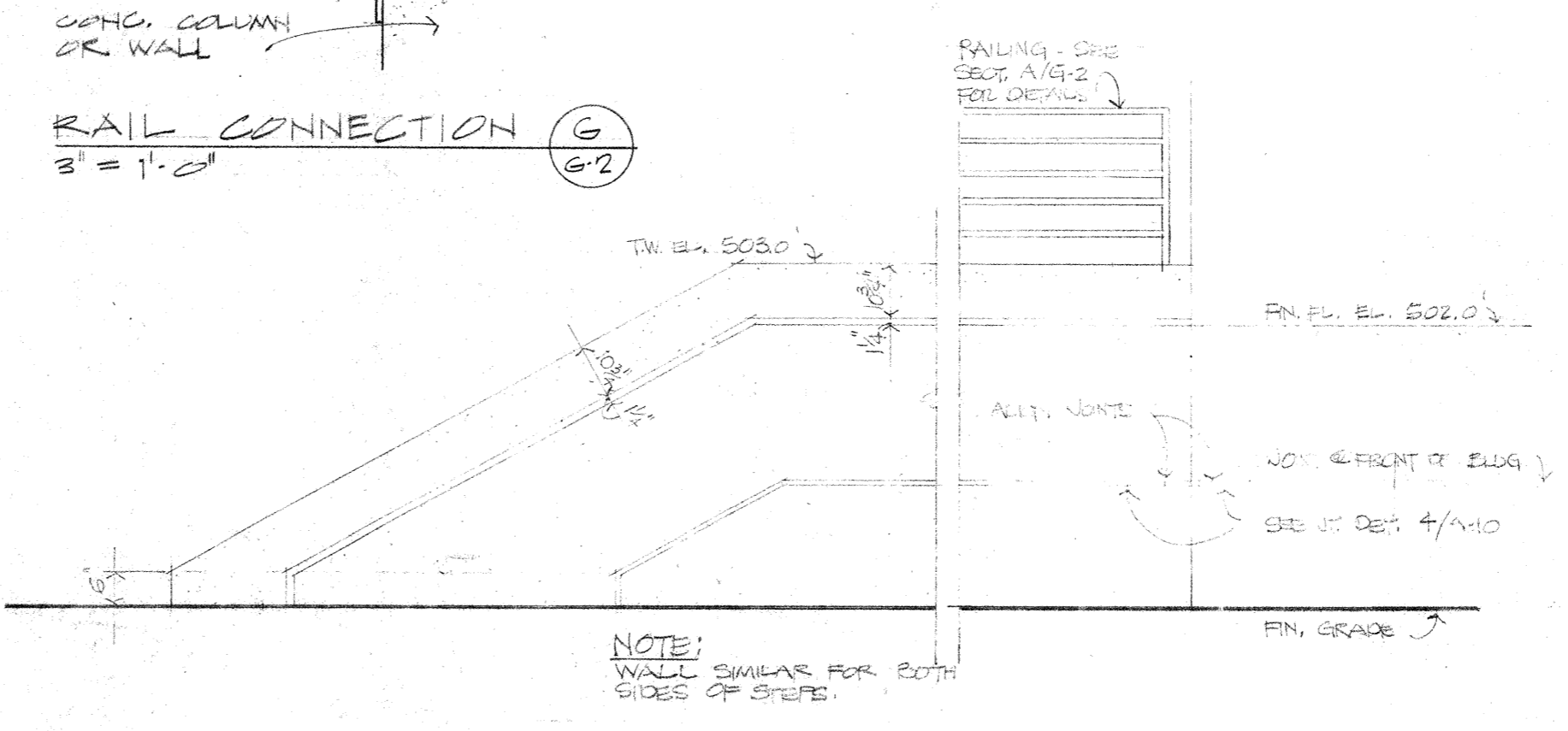
SECT. THRU STEPS (C)
SCALE: 3/8" = 1'-0"



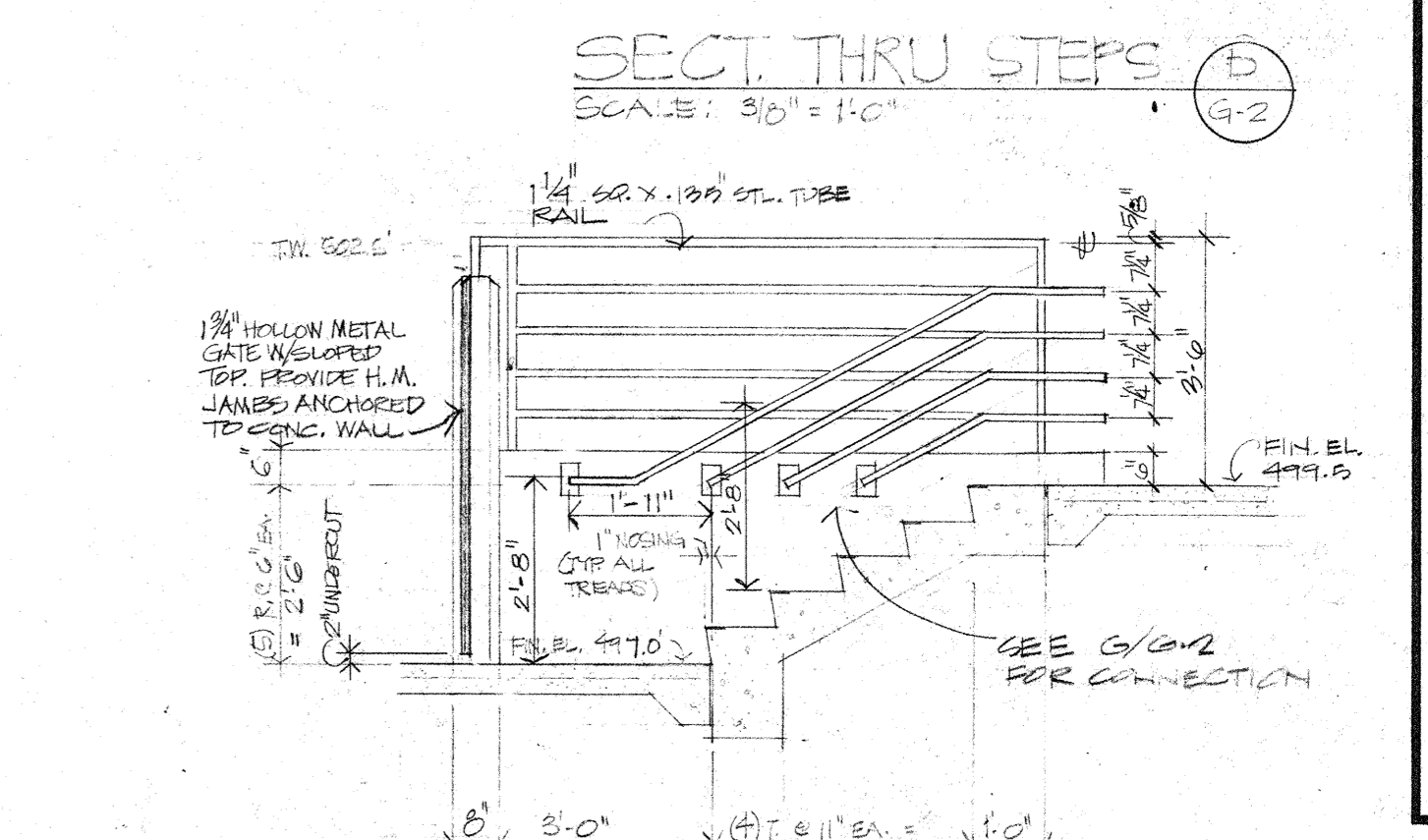
SECT. THRU STEPS (D)
SCALE: 3/8" = 1'-0"



SECT. THRU STEPS (A)
SCALE: 3/8" = 1'-0"

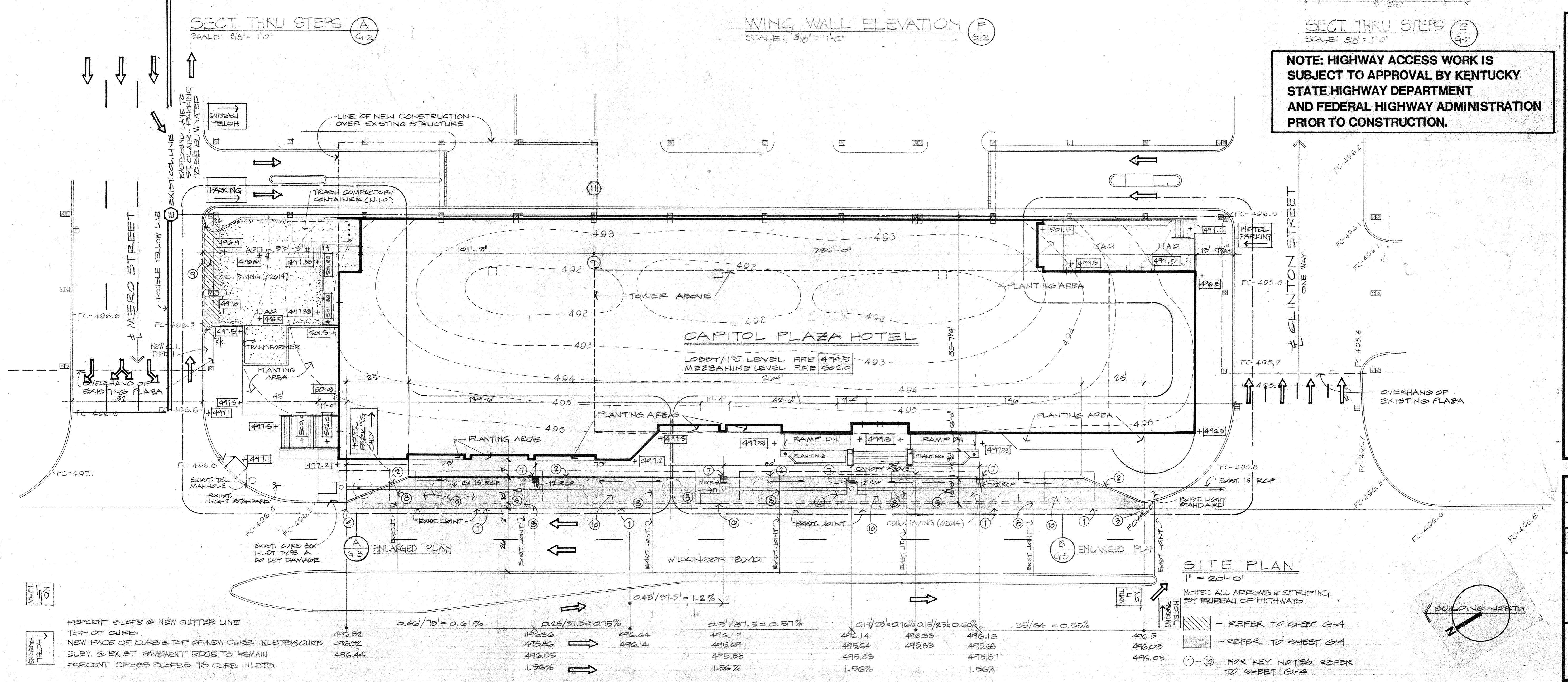


WING WALL ELEVATION (F)
SCALE: 3/8" = 1'-0"



SECT. THRU STEPS (E)
SCALE: 3/8" = 1'-0"

NOTE: HIGHWAY ACCESS WORK IS SUBJECT TO APPROVAL BY KENTUCKY STATE HIGHWAY DEPARTMENT AND FEDERAL HIGHWAY ADMINISTRATION PRIOR TO CONSTRUCTION.

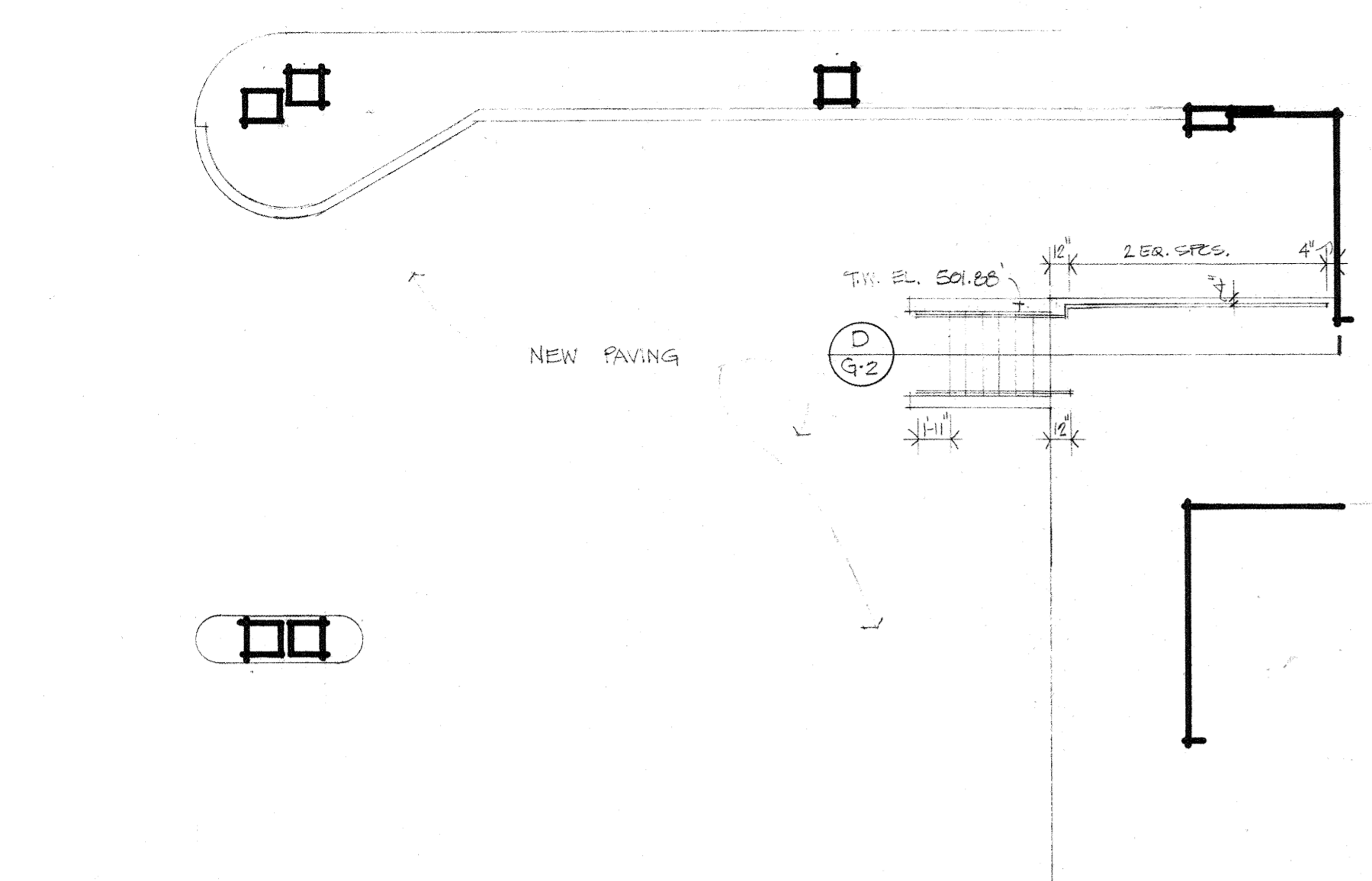
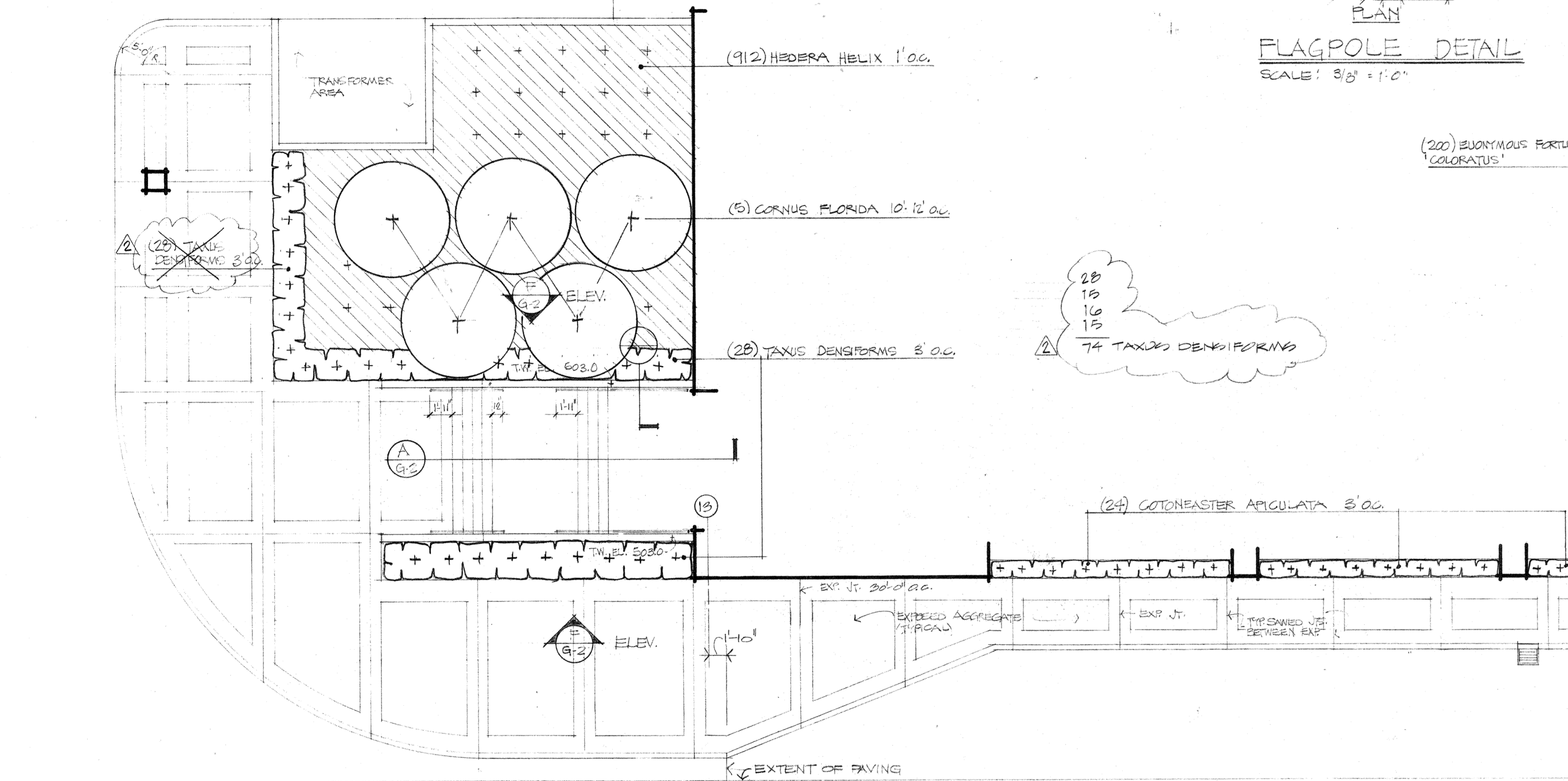
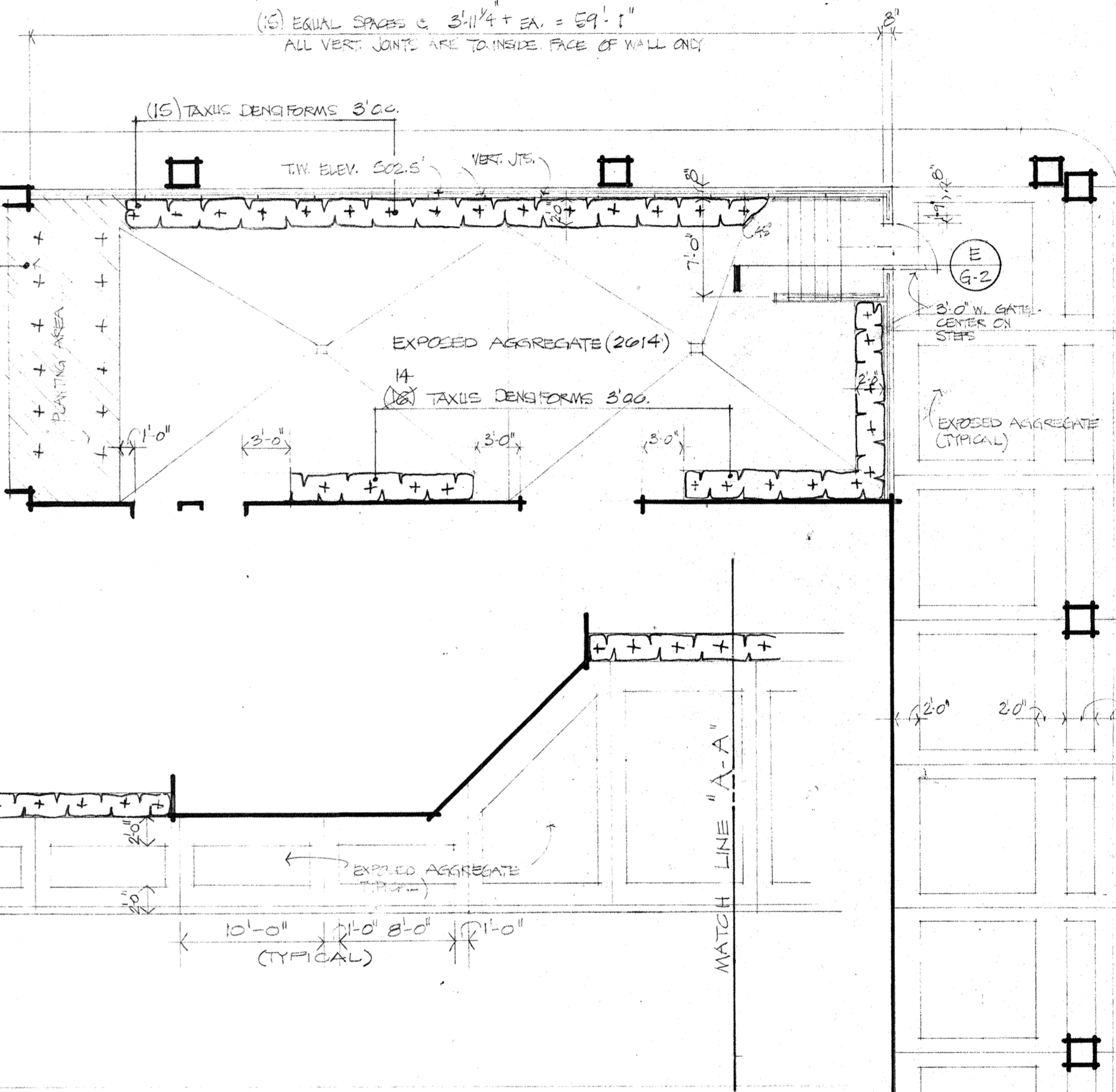
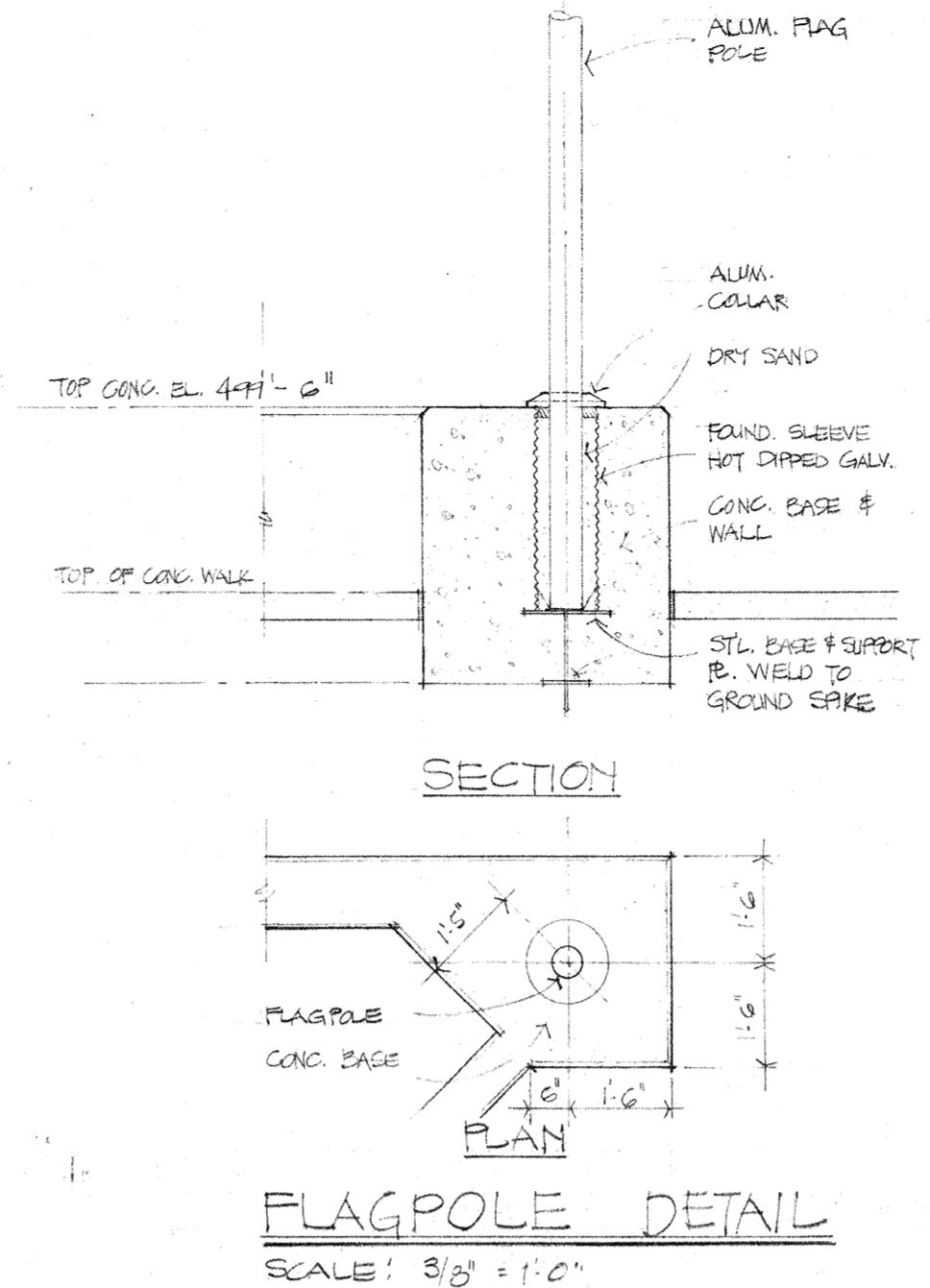


CAPITOL PLAZA HOTEL
FRANKFORT / KENTUCKY

JOHNSON / ROMANOWITZ ARCHITECTS / ARCHITECTS / LEXINGTON / KENTUCKY

GEOLOGICAL
SITE PLAN
DRAWING G-2

PLANTING SCHEDULE (02820)			
5	CORNUS FLORIDA	FLOWERING DOGWOOD	10'-12" TALL
24	COTONEASTER APICULATA	CRANBERRY COTONEASTER	5 GAL, 3' O.C.
840	EUONYMUS FORTUNEI	PURPLE WINTERCREEPER	3" POT 1' O.C.
12	GLEDITSIA TRIACANTHUS	SKYLINE LOUISI	3" CALIBER
912	HEDERA HELIX	ENGLISH IVY	3" POT 1' O.C.
3	MALUS SARGENTII	SARGENT CRABAPPLE	6'-8" TALL
72	TAXUS DENSIFORMIS	DENSEFORM YEW	24" TALL 3' O.C.
4	TILIA CORDATA 'GREENSPIRE'	LITTLE LEAF LINDEN	3" CALIBER



NOTE: HIGHWAY ACCESS WORK IS SUBJECT TO APPROVAL BY KENTUCKY STATE HIGHWAY DEPARTMENT AND FEDERAL HIGHWAY ADMINISTRATION PRIOR TO CONSTRUCTION.

JOHNSON / ROMANOWITZ / ARCHITECTS / LEXINGTON / KENTUCKY
301 EAST VINE STREET, SUITE A, LEXINGTON, KY 40502
PHONE (606) 252-6781

CLARIFICATIONS:
A 8-5-83
B 9-20-83

DRAWING G-3

GEOLOGICAL
SITE DETAILS
LANDSCAPE PLAN

DRAWN PROJECT 8228
CHECKED DATE 5-10-83

1. Traffic Safety

- a. Special working hours of 8:30 a.m. to 4:00 p.m. only, are to apply when necessary to block or obstruct one (1) lane of Wilkinson Blvd. All lanes are to be unobstructed during all non-working hours.
- b. No more than one (1) traveled lane is to be blocked or obstructed during working hours.
- c. All work necessary within the right of way of Wilkinson Blvd. is to be scheduled to be promptly completed so that hazards adjacent to the traveled way are kept to an absolute minimum.
- d. All signs and control of traffic to be in accordance with the Manual on Uniform Traffic Control Devices, latest edition.
- e. The contractor is to take whatever measures are necessary to keep all traveled surfaces free of dirt, mud or other material at all times in connection with this project.

2. Concrete Pavement Specifications

- a. All new concrete pavement widening of Wilkinson Blvd. as indicated on plan to consist of 9" thick Standard Reinforced Concrete, 3,500 p.s.i. test on 4" compacted Dense Graded Aggregate Base, and all materials and methods of construction, including curing, to be in accordance with Kentucky Bureau of Highways Standard Specifications for Road and Bridge Construction.
- b. The finished surface of all new concrete pavement within the right of way shall be true to the required slope and grade, and shall be uniform and free of irregularities.
- c. Joint layout and construction to be as indicated on plan and as specifically directed by the Kentucky Bureau of Highways' Inspector.
- d. New concrete pavement is to be cured and protected from traffic as specifically directed by the Kentucky Bureau of Highways' Inspector.
- e. The following Kentucky Bureau of Highways' Standard Drawings are to apply to the concrete pavement construction:

(1) Reinforcement Steel for Cement Concrete Pavement: RPS-001-02

3. Curb Specifications

- a. All curbs or curb and gutter are to be constructed of Class A concrete, 3,500 p.s.i. test, and are to be uniform in height, width and alignment, true to grade, and satisfactory in finish and appearance as determined by the Bureau. All materials and methods of construction, including curing, to be in accordance with Section 713 of Kentucky Bureau of Highways Standard Specifications for Road and Bridge Construction, latest edition.

4. Surface Drainage

- a. All gutter lines at the base of new curbs are to be on continuous grades, and pockets of water along curbs or in widened area are not to be acceptable.
- b. The new pavement is to be flush with the edge of existing pavement of Wilkinson Blvd., and is to slope away from this existing edge of pavement as specified on the plan.

5. Utilities

- a. The permittee is to be responsible for any damage to existing utilities and any utility modifications or relocations within State right of way which are necessary, as determined by the Kentucky Bureau of Highways or by the owner of the utility, are to be at the expense of the permittee and subject to the approval of the Bureau.
- b. Contractor Note - 48 hours before starting to work this project, call the Kentucky Underground Utilities Protection Center at 1-800-752-6007 toll free, for accurate location of all underground utilities.

6. Pipe and Drainage Structures

- a. All pipe is to be laid in a straight alignment, to proper grades, and with all materials and methods of installation, including bedding and joint sealing, in accordance with Section 611 of the Kentucky Bureau of Highways Standard Specifications for Road and Bridge Construction, latest edition. Pipe is not to be covered until inspected by the Kentucky Bureau of Highways and express permission obtained to make backfill.

NOTE: ALL JOINTS IN NEW CONC. PAVEMENT ARE TO BE SAWSAWED JOINTS TO A DEPTH AS SPECIFIED, AND WITHIN A TIME PERIOD AFTER POURING, ALL AS SPECIFICALLY INSTRUCTED BY THE KY. BUREAU OF HIGHWAYS INSPECTOR.

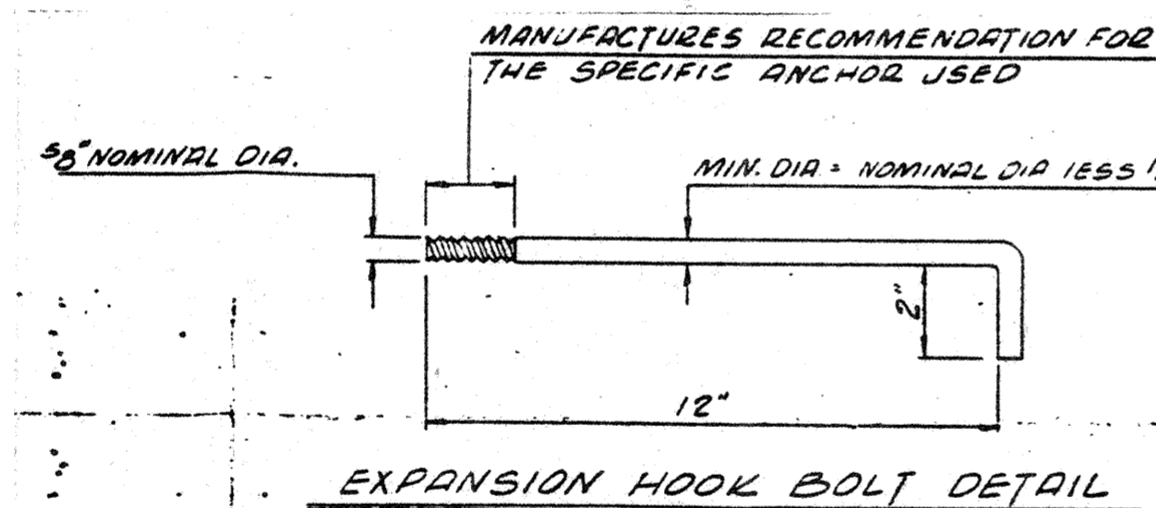
NOTE: SPECIAL CONDITION - AN INSPECTOR FROM THE ENCROACHMENT PERMIT OFFICE OF THE KENTUCKY BUREAU OF HIGHWAYS IS TO BE PRESENT DURING ALL CONCRETE WORK AS DETAILED ON SHEETS (G-12, G-13, & G-4), INCLUDING REMOVAL OF CURBS & GUTTERS. NOTIFY PHILIP MANN @ 502-504-2269, 24 HOURS IN ADVANCE OF THIS WORK.

NOTE: SLOPE OF THIS PORTION OF NEW CONC. PAVEMENT IS TO MATCH SLOPE OF EXIST. PAVEMENT OF WILKINSON BLVD.

KEY NOTES FOR HIGHWAY ACCESS-CONSTRUCTION REFER TO SHEET G-2

1. Remove existing concrete curb and gutter to existing joint, leaving a straight, undamaged edge, against which the new full depth concrete pavement is to be constructed. Saw if necessary to prevent damage to adjacent concrete pavement to remain. (See "Curb & Gutter Removal & Concrete Widening Detail" on this sheet).
2. Construct Standard Concrete Integral Curbs in accordance with attached Ky Bureau of Highways Standard Drawing No. RPM-100-03.
3. Saw existing curb and gutter at this point, perpendicular to the curb, and begin new curb and concrete pavement. New curb is to be an exact match of existing curb. Install 1/2" premoled expansion joint material between new and existing curb and gutter.
4. Remove existing curb and gutter to existing joint at curb box inlet and begin new curb and concrete pavement. Install 1/2" premoled expansion joint material between new and existing curb and gutter.
5. Remove old light standard bases.
6. Remove existing Curb Box Inlets (Type A) and restore continuity of existing 15" RCP storm sewer. (See "Special Note" in following item).
7. Construct Standard Curb Box Inlets Type F, in accordance with attached Ky Bureau of Highways Standard Drawing No. RDB 320-03. Connect to existing 15" R.C.P. storm sewer with 12" R.C.P.
Special Note: All connections and modifications to the existing R.C.P. storm sewer are to be in accordance with Ky Bureau of Highways Standards and are not to be covered until inspected by the Permits Inspector and express permission obtained to make backfill. Notify Phillip Mann at tel. 564-2269 to schedule inspection.
8. Extend all existing joints in the concrete pavement of Wilkinson Blvd. through the new concrete pavement and integral curbs by sawing to a depth of not less than 2". Seal all joints after sawing.
9. Entirely remove all existing pavement, curbs, drainage structures, sidewalks, etc. within this area and construct Standard Reinforced Concrete Pavement to the following specifications:
4" Compacted Dense Graded Aggregate Base
9" Standard Reinforced Concrete Pavement (Class A-3500 p.s.i. test)
10. Remove existing Standard Concrete Integral Curb by sawing and construct concrete entrances in accordance with attached KY Bureau of Highways Standard Drawing No. RPM-150.

Special Condition:
All signing, as indicated on this plan, is the responsibility of the permittee, and is to be in accordance with the Manual on Uniform Traffic Control Devices, latest edition, and as specifically instructed and to the satisfaction of the District Traffic Engineer, Ky Bureau of Highways.



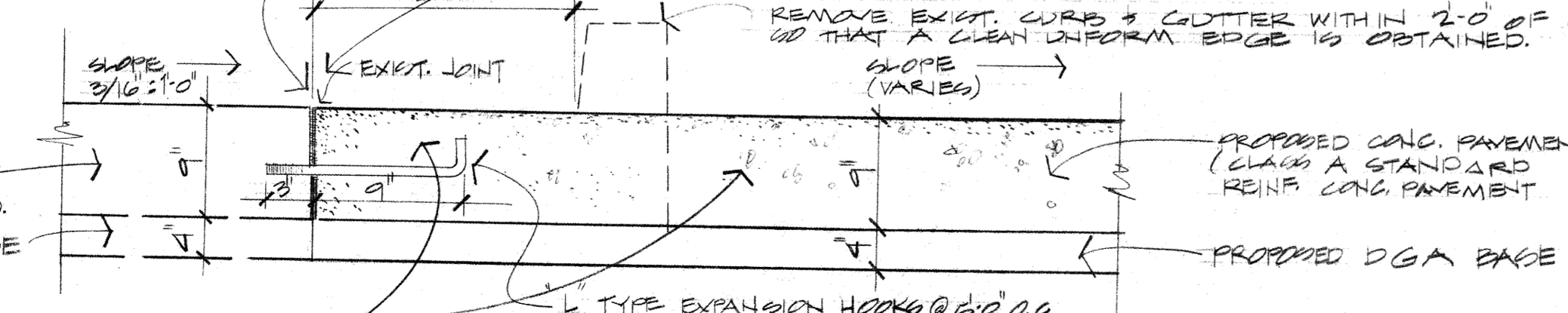
THE EXPANSION ANCHOR FOR THE BOLT SIZE INDICATED ON THE PLANS SHALL BE BETHLEHEM MINE ROOF EXPANSION TYPE WITH K-I SHELL, PHILLIPS RED HEAD ANCHOR, CHICAGO BOLT COMPANY SPECIAL PLUSH SELF DRILLING ANCHOR OR APPROVED EQUAL. INSTALLATION SHALL CONFORM TO THE MANUFACTURERS RECOMMENDATION FOR THE SPECIFIC ANCHOR USED. THE EXPANSION TYPE SLEEVE SHALL BE CAPABLE OF WITHSTANDING A PULL OUT TEST OF 9,000 POUNDS AND SHALL BE FIELD TESTED AS DIRECTED BY THE ENGINEER IMMEDIATELY PRIOR TO CONSTRUCTION OF THE ADJOINING CONCRETE PAVEMENT AND CONCRETE BASE. THE EXPANSION HOOK BOLTS SHALL BE SPACED ON 5' CENTERS.

THE HOOK BOLTS SHALL CONFORM TO THE REQUIREMENTS OF THE CURRENT STANDARD SPECIFICATIONS. THIS SHALL BE OF THE "L" TYPE AS SHOWN IN THE SKETCH ABOVE.

REMOVE EXIST. CONC. CURB & GUTTER @ EXIST. JOINT LEAVING A STRAIGHT, UNDATED EDGE. SAW IF NECESSARY TO PREVENT DAMAGE TO ADJACENT CONC. PAVEMENT TO REMAIN, AND TO ESTABLISH A UNIFORM EDGE.

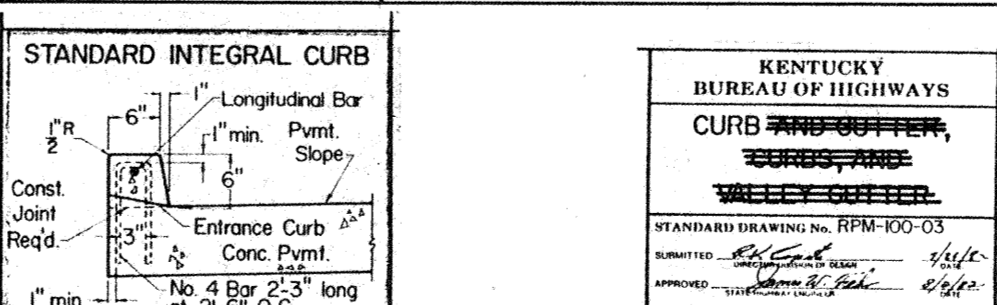
POUR NEW CONC. PAVEMENT FLUSH WITH EXIST. PAVEMENT. SAW EXPANSION JOINT AT JUNCTION OF OLD & NEW PAVEMENT & SEAL JOINT. NEW JOINTS ARE TO BE SAWSAWED TO A DEPTH OF 2" AS SPECIFICALLY INSTRUCTED BY THE KY. BUREAU OF HIGHWAYS INSPECTOR.

REMOVE EXIST. CURB & GUTTER WITHIN 2'-0" OF GUTTER LINE, SO THAT A CLEAN UNIFORM EDGE IS OBTAINED.

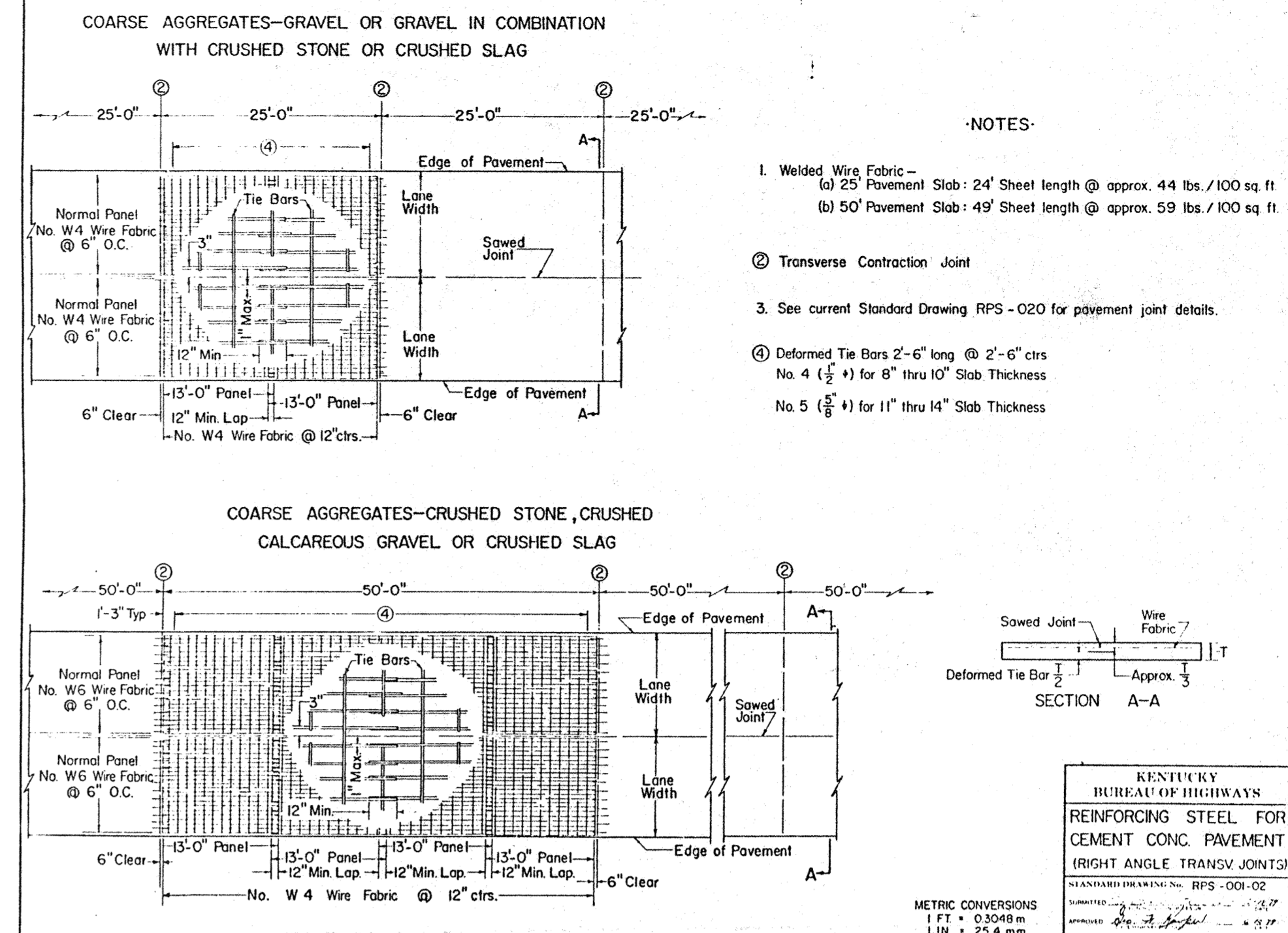


CURB & GUTTER REMOVAL, CONC. WIDENING DETAIL
NOT TO SCALE

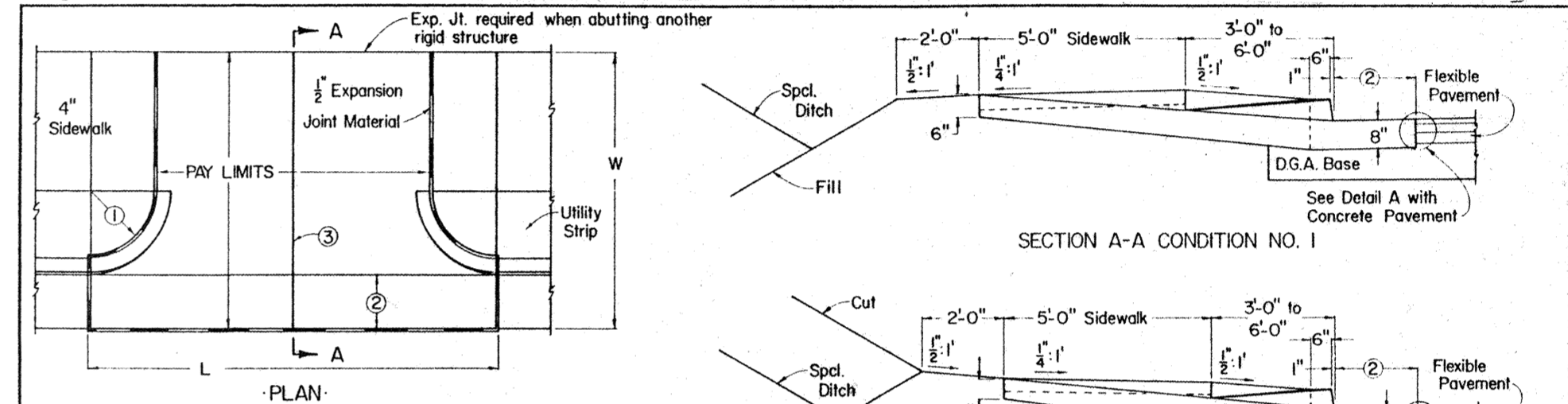
NOTE: HIGHWAY ACCESS WORK IS SUBJECT TO APPROVAL BY KENTUCKY STATE HIGHWAY DEPARTMENT AND FEDERAL HIGHWAY ADMINISTRATION PRIOR TO CONSTRUCTION.



NOTE: All integral curbs showing reinforcing steel shall be cast separately from the pavement and the reinforcement shall consist solely of No. 4 Bars as detailed on this drawing. On construction care should be taken so that no reinforcement bars are placed closer than 3" to the center of the sawed transverse joint.



- NOTES:
1. Welded Wire Fabric - (a) 25' Pavement Slab: 24' Sheet length @ approx. 44 lbs./100 sq ft (b) 50' Pavement Slab: 49' Sheet length @ approx. 59 lbs./100 sq ft
 2. Transverse Contraction Joint
 3. See current Standard Drawing RPS-020 for pavement joint details.
 4. Deformed Tie Bars 2'-6" long @ 2'-6" cts No. 4 (1/2") for 8" thru 10" Slab Thickness No. 5 (5/8") for 11" thru 14" Slab Thickness



NOTES:

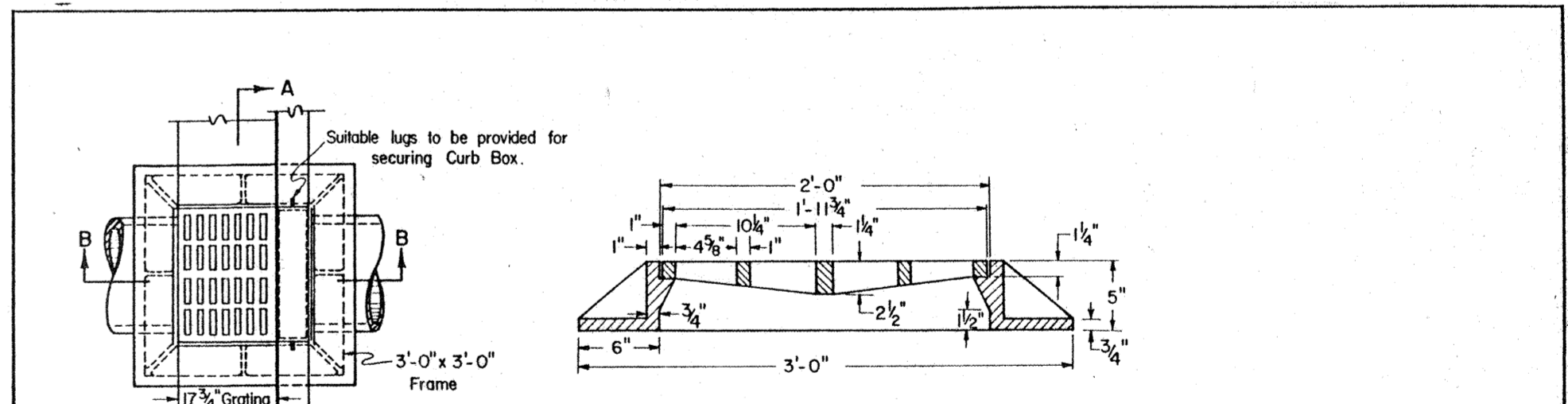
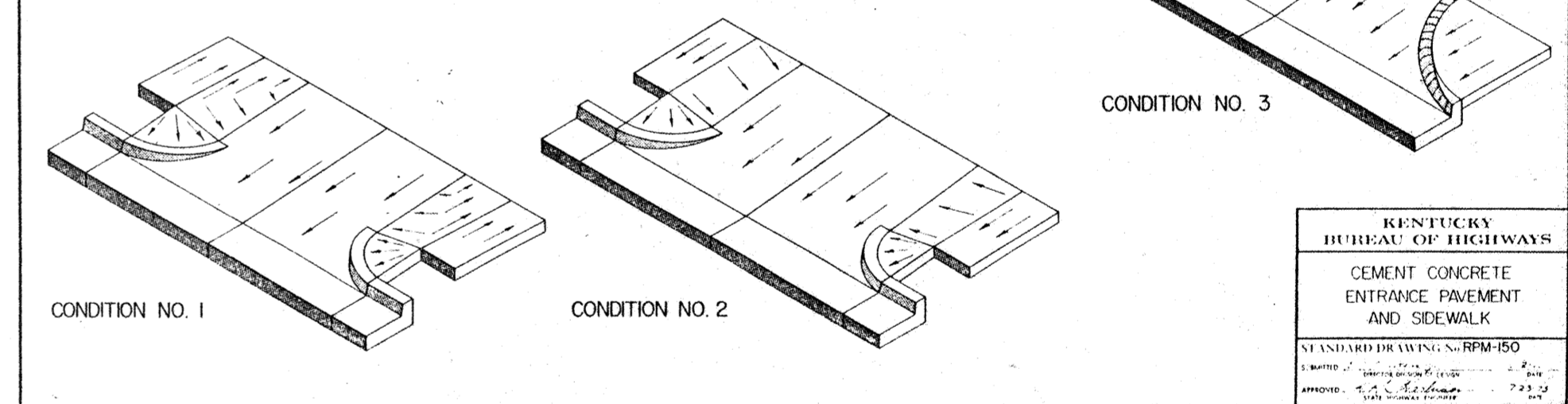
1. Radii: Residential - Minimum 2'-5", Desirable 10'-0"
2. Commercial - Minimum 5'-0", Maximum 30'-0"
3. 1'-0" or 2'-0" with Cement Concrete Pavement, 2'-0" with Flexible Pavement
4. When L is greater than W a grooved joint, 1" deep made with a jointer having a radius of 1/4" inch, shall be required at the center of L in the plastic concrete.

Class "A" Concrete or Cement Concrete Pavement Concrete shall be used in the entrance pavement.

The entrance pavement shall receive a broom finish and shall be cured the same as the mainline pavement and/or sidewalk.

The contract unit price bid per square yard for Cement Concrete Entrance Pavement shall include Class "A" Concrete and all accessories necessary to complete the work.

Use Condition No 3 when no utility strip is provided, and incorporate features of other designs shown where not in conflict.

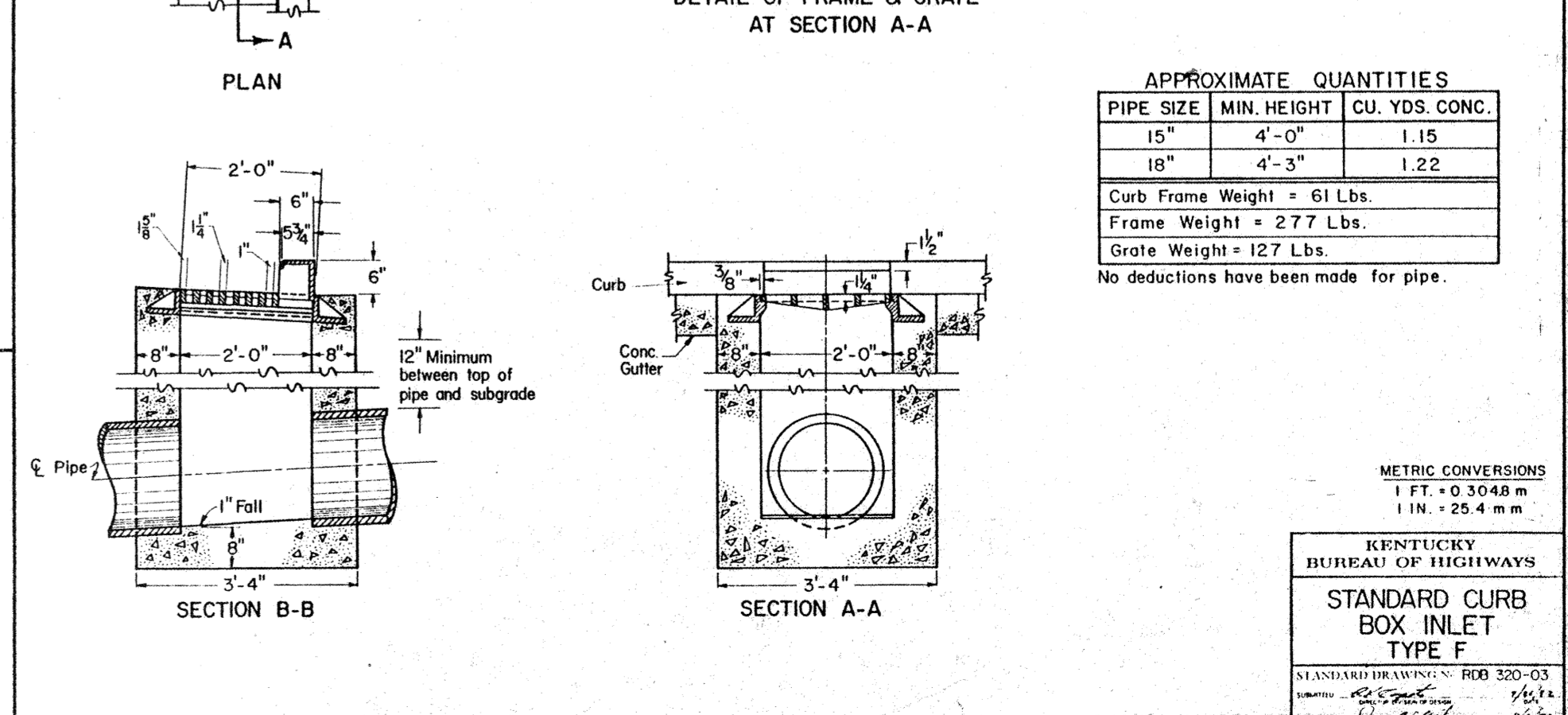


APPROXIMATE QUANTITIES

PIPE SIZE	MIN. HEIGHT	CU. YDS. CONC.
15"	4'-0"	1.15
18"	4'-3"	1.22

Curb Frame Weight = 61 Lbs.
Frame Weight = 277 Lbs.
Grate Weight = 127 Lbs.

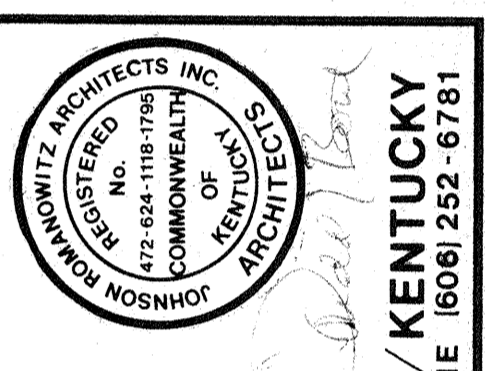
No deductions have been made for pipe.



METRIC CONVERSIONS
1 FT. = 0.3048 m
1 IN. = 25.4 mm

KENTUCKY BUREAU OF HIGHWAYS
STANDARD DRAWING NO. RDB 320-03
REVISED 1/81
APPROVED: [Signature]

CAPITOL PLAZA HOTEL
FRANKFORT / KENTUCKY



JOHNSON / ROMANOWITZ / ARCHITECTS / LEXINGTON / KENTUCKY
301 EAST VINE STREET, SUITE A
LEXINGTON, KY 40502
PHONE (606) 252-6781

DRAWN	PROJECT
CHECKED	DATE

GEOLOGICAL
HIGHWAY ACCESS
CONSTRUCTION
DETAILS &
SPECIFICATIONS

DRAWING
G-4