

Hoge House

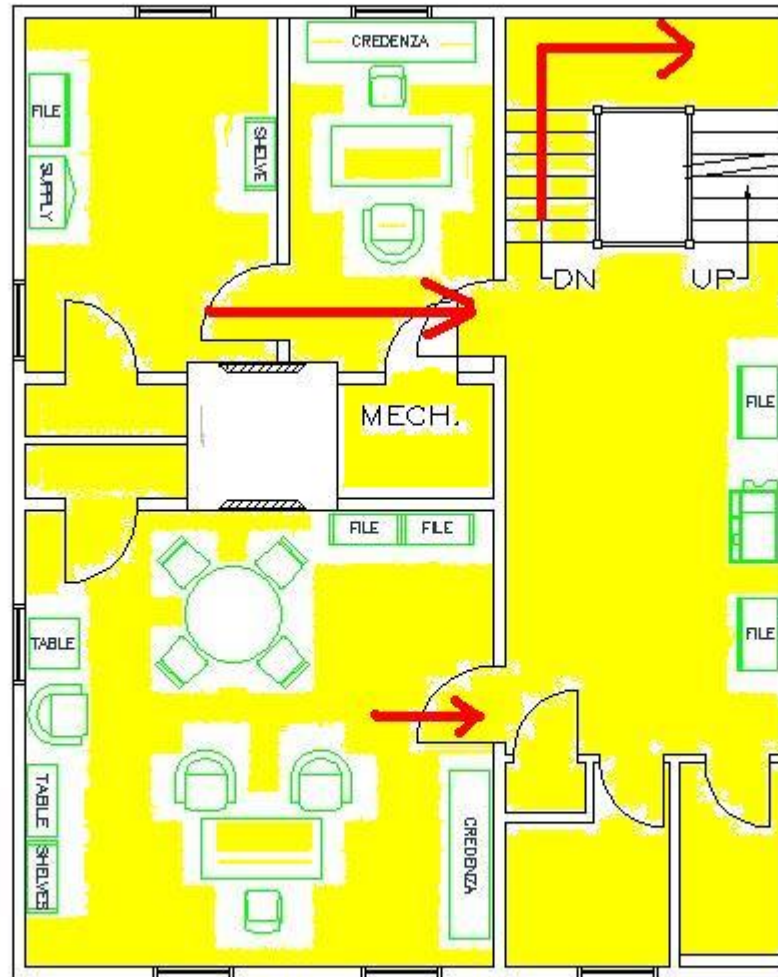
Fire Evacuation Plan Charts

HH—1st Floor Evacuation



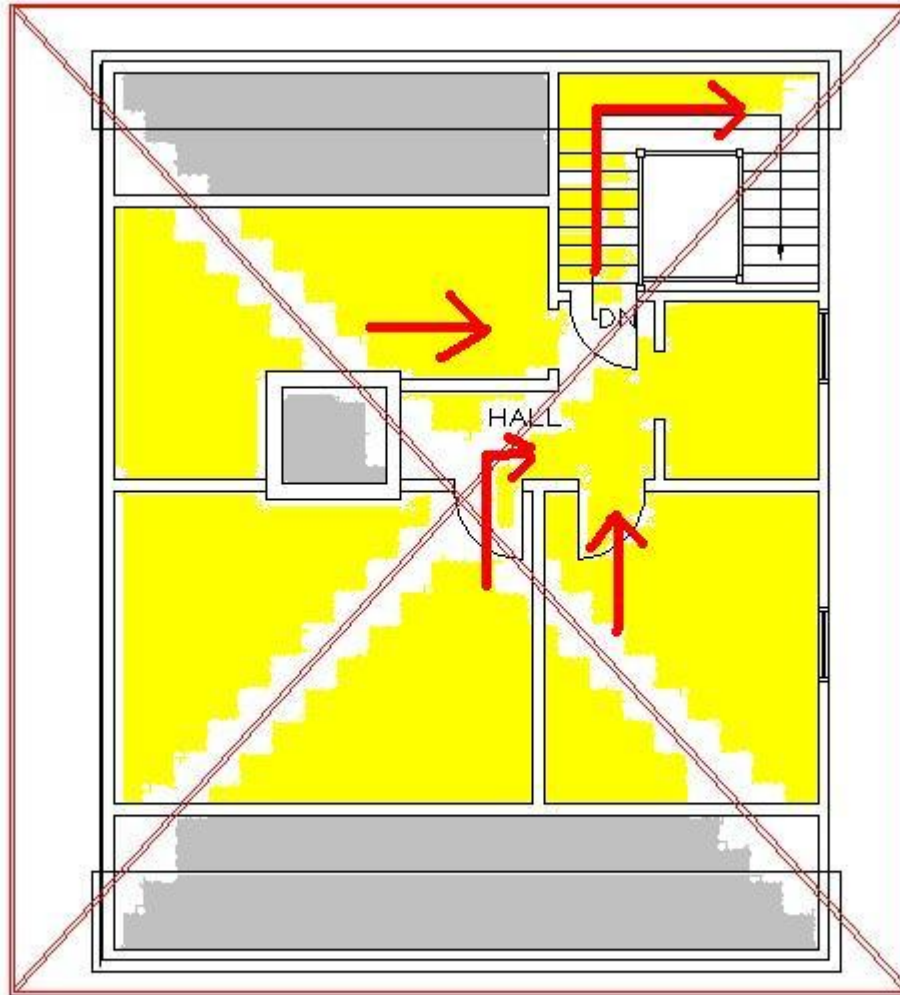
FIRST FLOOR — 1,250.16 S.F.

HH—2nd Floor Evacuation



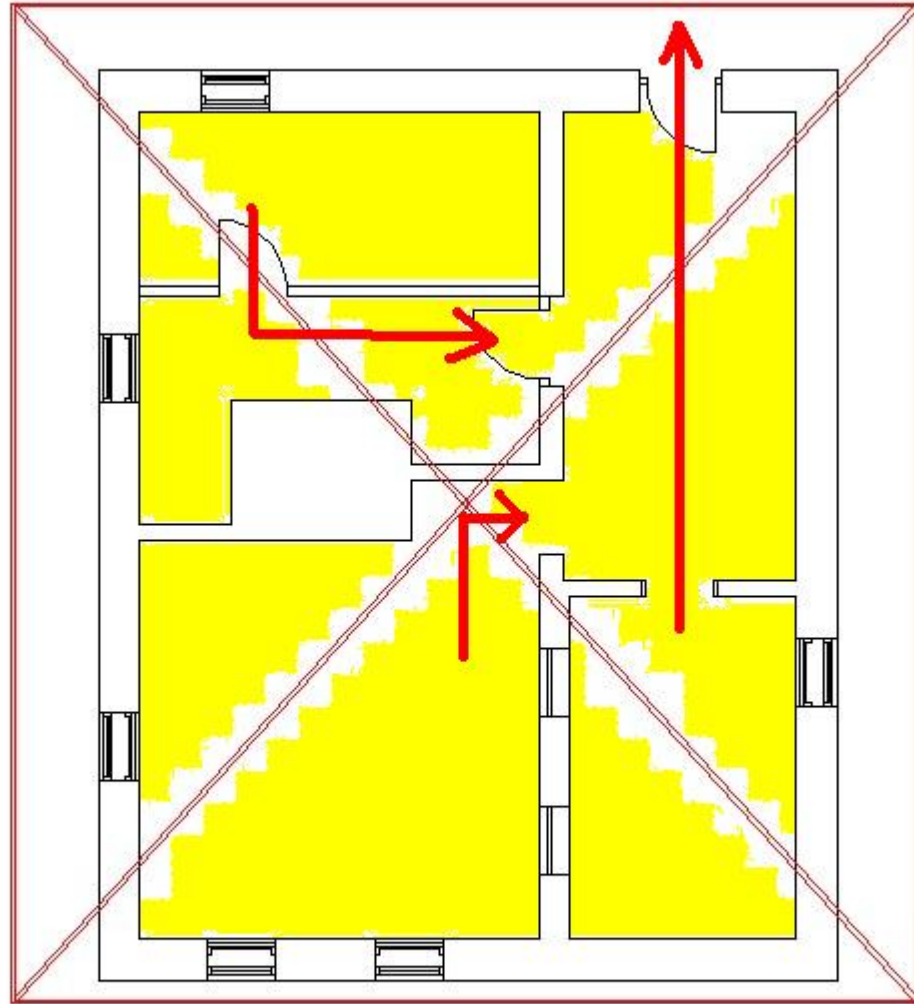
SECOND FLOOR — 1,244.75 S.F.

HH—3rd Floor Evacuation



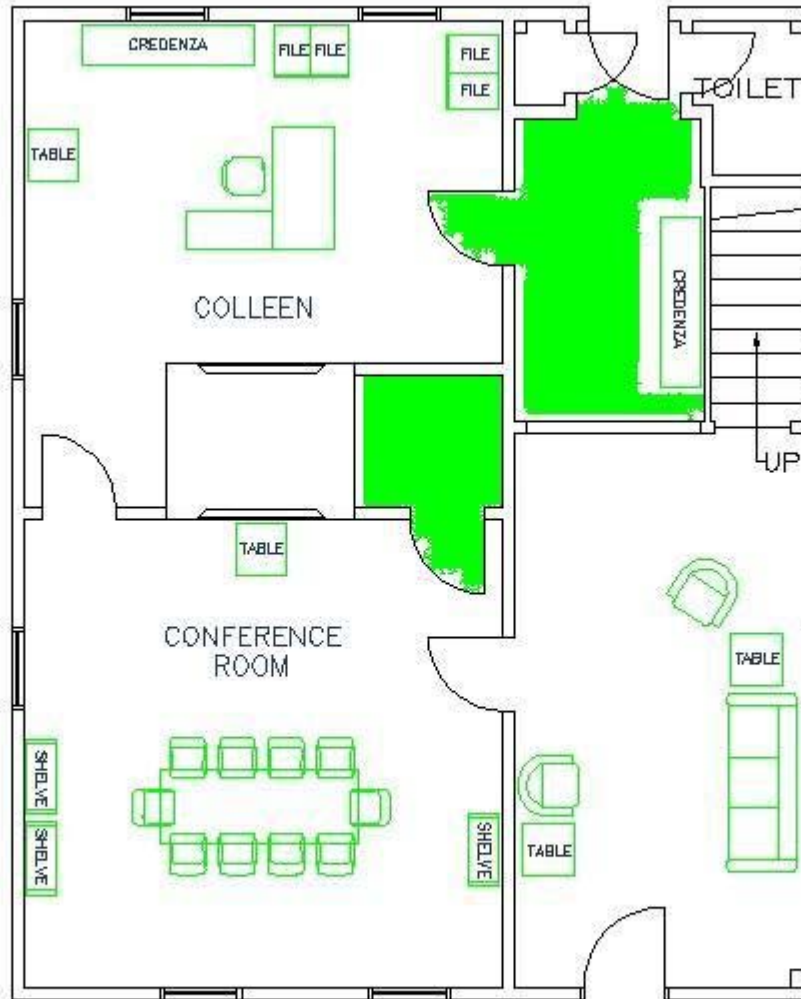
THIRD FLOOR - 915.13 S.E.
UNUSEABLE

HH—Basement Evacuation



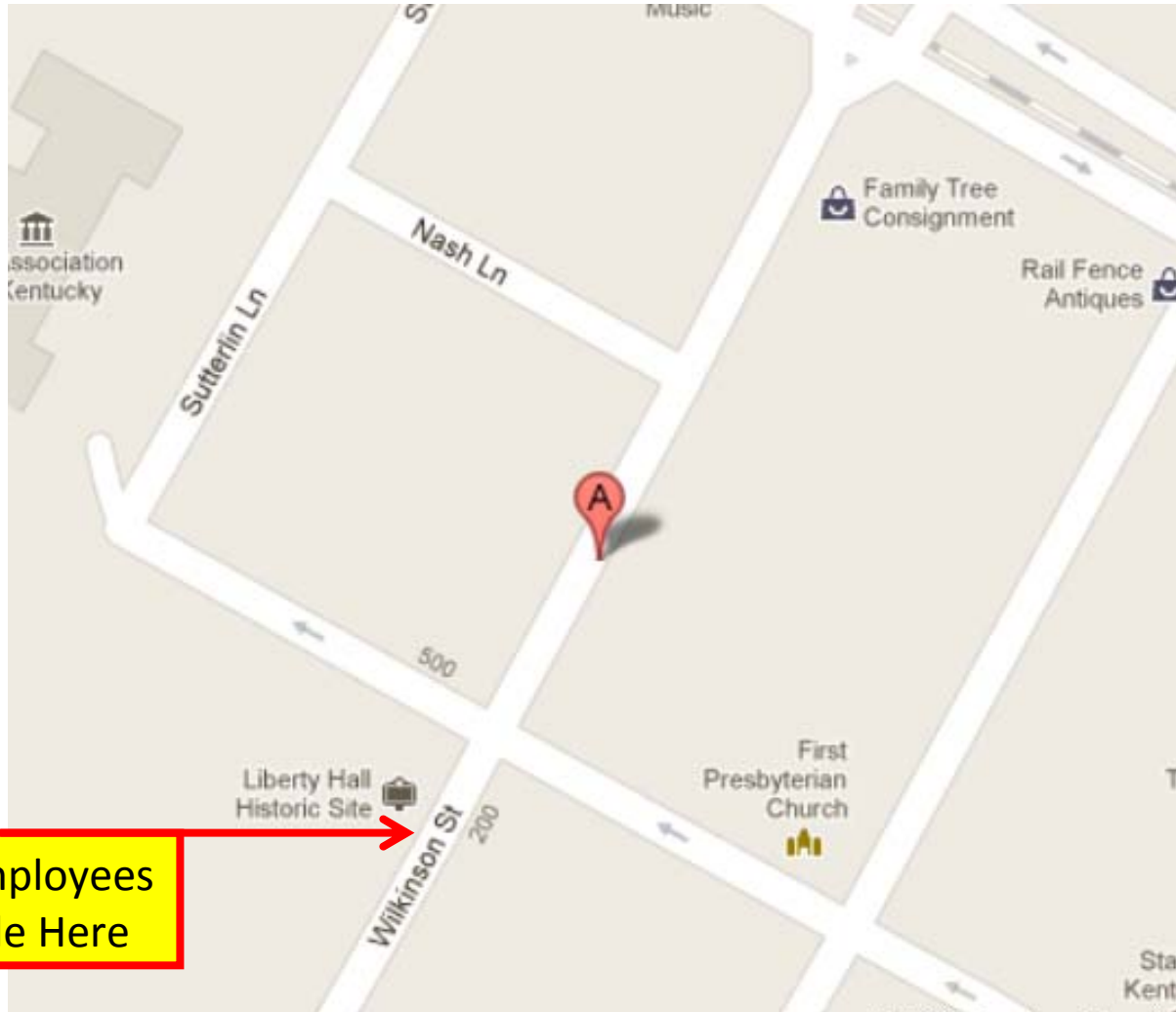
BASEMENT FLOOR - 1,066.39 S.F.
UNUSEABLE

HH—Tornado Sheltering



FIRST FLOOR — 1,250.16 S.F.

HH—Rally Points



DFSS Employees
Assemble Here

