

ARC LENGTH = 39.77 FT
R = 25.00 FT
CHORD BEARING = N 15°49'22" W
CHORD LENGTH = 35.71 FT

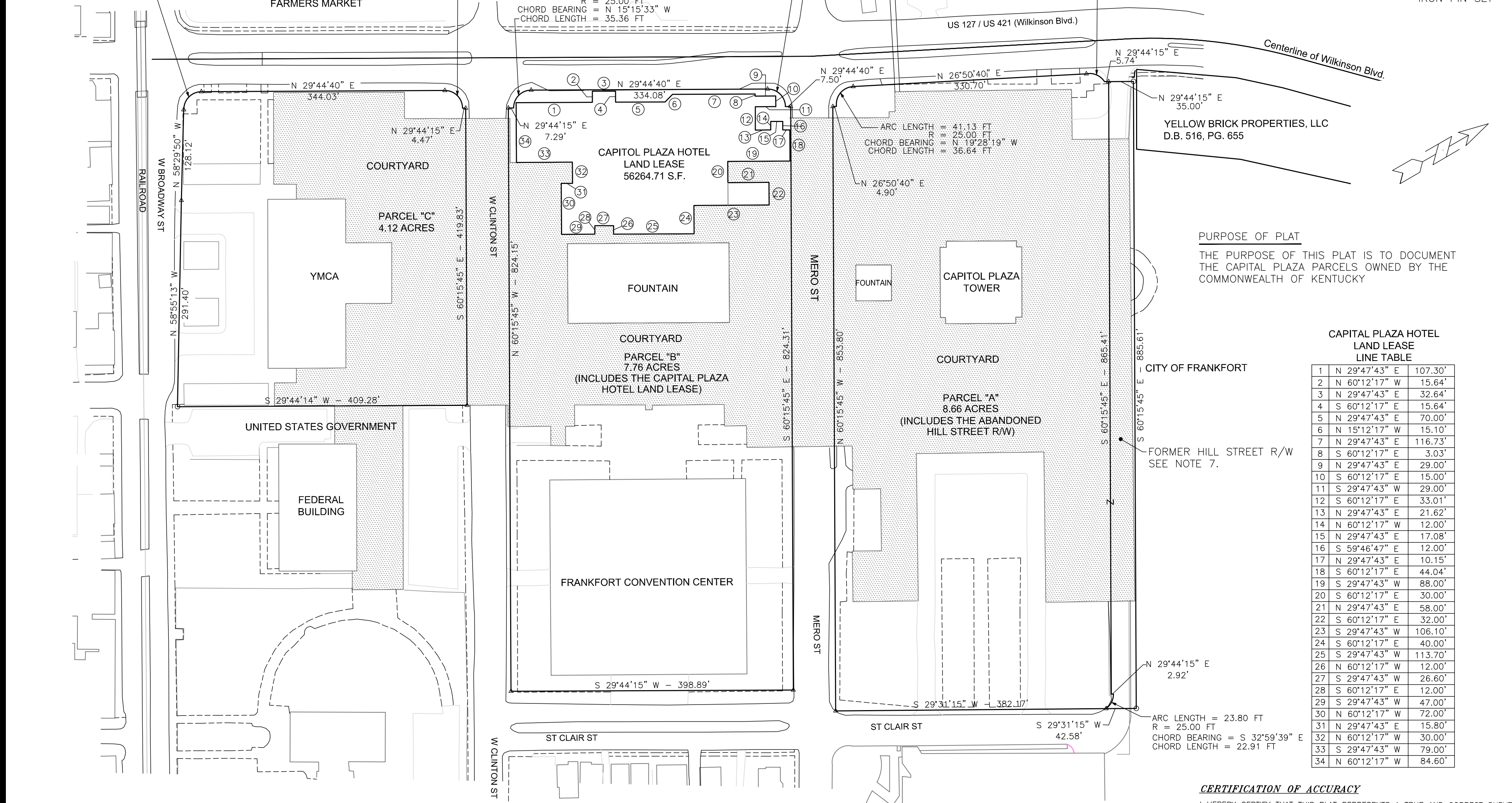
ARC LENGTH = 39.28 FT
R = 25.00 FT
CHORD BEARING = N 74°44'17" E
CHORD LENGTH = 35.36 FT

ARC LENGTH = 39.09 FT
R = 25.00 FT
CHORD BEARING = N 74°29'29" E
CHORD LENGTH = 35.23 FT

ARC LENGTH = 39.28 FT
R = 25.00 FT
CHORD BEARING = N 15°15'33" W
CHORD LENGTH = 35.36 FT

ARC LENGTH = 29.66 FT
R = 25.00 FT
CHORD BEARING = N 53°24'34" E
CHORD LENGTH = 27.95 FT

LEGEND
 PLAZA
 MAG NAIL SET
 IRON PIN SET



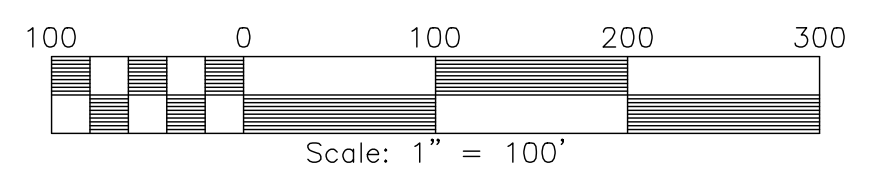
PURPOSE OF PLAT
 THE PURPOSE OF THIS PLAT IS TO DOCUMENT THE CAPITAL PLAZA PARCELS OWNED BY THE COMMONWEALTH OF KENTUCKY

CAPITAL PLAZA HOTEL LAND LEASE LINE TABLE

LINE	BEARING	DISTANCE	BEARING	DISTANCE
1	N 29°47'43" E	107.30'		
2	N 60°12'17" W	15.64'		
3	N 29°47'43" E	32.64'		
4	S 60°12'17" E	15.64'		
5	N 29°47'43" E	70.00'		
6	N 15°12'17" W	15.10'		
7	N 29°47'43" E	116.73'		
8	S 60°12'17" E	3.03'		
9	N 29°47'43" E	29.00'		
10	S 60°12'17" E	15.00'		
11	S 29°47'43" W	29.00'		
12	S 60°12'17" E	33.01'		
13	N 29°47'43" E	21.62'		
14	N 60°12'17" W	12.00'		
15	N 29°47'43" E	17.08'		
16	S 59°46'47" E	12.00'		
17	N 29°47'43" E	10.15'		
18	S 60°12'17" E	44.04'		
19	S 29°47'43" W	88.00'		
20	S 60°12'17" E	30.00'		
21	N 29°47'43" E	58.00'		
22	S 60°12'17" E	32.00'		
23	S 29°47'43" W	106.10'		
24	S 60°12'17" E	40.00'		
25	S 29°47'43" W	113.70'		
26	N 60°12'17" W	12.00'		
27	S 29°47'43" W	26.60'		
28	S 60°12'17" E	12.00'		
29	S 29°47'43" W	47.00'		
30	N 60°12'17" W	72.00'		
31	N 29°47'43" E	15.80'		
32	N 60°12'17" W	30.00'		
33	S 29°47'43" W	79.00'		
34	N 60°12'17" W	84.60'		

CERTIFICATION OF ACCURACY
 I HEREBY CERTIFY THAT THIS PLAT REPRESENTS A TRUE AND CORRECT SURVEY THAT MEETS THE ACCURACY AND REQUIRED BY THE LAWS GOVERNING SURVEYING IN THE COMMONWEALTH OF KENTUCKY. THE MONUMENTS DESCRIBED AND SHOWN HEREON HAVE BEEN PLACED TO THE SPECIFICATIONS OF THOSE SAME LAWS.

DATE: _____
 Joseph F. Grider, PLS # 2889
 HMB Professional Engineers, Inc.
 3 HMB Circle
 Frankfort, KY 40601



SURVEY NOTES:

1. THE OWNER OF THIS PROPERTY IS THE COMMONWEALTH OF KENTUCKY. THE SOURCE DEED WAS NOT PROVIDED BY THE OWNER.
2. ALL PROPERTY PINS SET BY THIS SURVEY ARE EITHER 1/2" REBAR, 18" LONG, WITH A YELLOW PLASTIC CAP, OR A MAG NAIL WITH A 2" STAINLESS STEEL WASHER. BOTH THE CAP AND THE WASHER ARE IMPRINTED WITH JF GRIDER PLS # 2889.
3. THE BEARINGS ON THIS PLAT ARE BASED ON GRID NORTH ESTABLISHED BY A REAL-TIME KINEMATIC GPS SURVEY TIED TO THE FRANKFORT ELECTRIC & WATER PLANT BOARD MONUMENT FEWBP 80. THE SURVEY DATUM IS THE KENTUCKY STATE PLANE COORDINATE SYSTEM, NORTH ZONE NAD 83, NAVD 88.

4. THE WILKINSON BOULEVARD RIGHT OF WAY SHOWN ON THIS PLAT WAS ESTABLISHED USING HIGHWAY PLANS DATING TO 1969. THE HIGHWAY PROJECT NUMBER IS SP 37-5625-U551(7).
5. ALL PARCELS ARE SUBJECT TO EASEMENTS, BOTH RECORDED, AND APPARENT. NO ATTEMPT WAS MADE TO LOCATE AND SHOW EXISTING UTILITIES AND EASEMENTS ON THESE PARCELS.
6. ALL PARCELS ARE ZONED "SG". THERE ARE NO MINIMUM BUILDING SET BACKS FOR THIS ZONE DISTRICT.
7. PARCEL "A" INCLUDES ABANDONED RIGHT OF WAY (R/W) FROM HILL STREET. HILL STREET WAS CLOSED BY CITY OF FRANKFORT ORDINANCE 3, 1972 SERIES, DATED JANUARY 24, 1972.

NO.	DATE	REVISIONS	CHK'D	APPR'D	DATE

PROJECT: 309400 DATE: AUG. 2011
SCALE: 1" = 100'

DESIGNED BY	NAME	DATE
JFG	JFG	
DRAWN BY	SAB	
CHECKED BY	JFG	
RECORD DWGS.		



3 HMB CIRCLE
 FRANKFORT, KENTUCKY
 (502) 695-9800
 (502) 695-9810 FAX



**CAPITAL PLAZA REFERENCE PLAT
 WILKINSON BLVD.
 FRANKFORT, KENTUCKY**