



March 2014  
**MONTHLY**  
**INVESTMENT INCOME REPORT**



**Commonwealth of Kentucky**  
**Lori H. Flanery, Secretary**  
**FINANCE AND ADMINISTRATION CABINET**



3/31/2014

**PORTFOLIO SUMMARY  
POOLS**

	TYPE	MARKET VALUE	MARKET YIELD (%)	DURATION (Years)	PERCENT of TOTAL	STATUTORY LIMIT
<b>Treasuries</b>						
	Bills	164,995,848.45	0.03	0.04	4%	
	Treasury Notes	1,284,727,433.41	0.29	1.35	33%	
	Sub-total	1,449,723,281.86	0.26	1.20	37%	
<b>Agencies</b>						
	Notes	378,134,719.33	0.82	1.72	10%	
	Discounts	113,977,999.45	0.09	0.23	3%	
	Sub-total	492,112,718.78	0.65	1.38	13%	
<b>Municipals</b>						
		53,631,982.11	0.89	0.72	1%	
<b>Corporates</b>						
		363,347,924.28	1.07	2.46	9%	25%
<b>Mortgages</b>						
	Pools	206,527,578.33	1.30	0.73	5%	
	CMO's	256,456,298.39	1.38	2.32	7%	
	Sub-total	462,983,876.72	1.35	1.61	12%	25%
<b>Asset Backed Securities</b>						
		167,145,455.03	0.47	1.14	4%	20%
<b>Repurchase Agreements</b>						
	Overnight	370,000,669.45	0.07	0.00	10%	
	< 30 days	12,000,460.39	0.06	0.08	1%	
	< 60 days	0.00	0.00	0.00	0%	
	< 90 days	1,500,034.17	0.41	0.08	0%	
	< 1 year	0.00	0.00	0.00	0%	
	Flex Repos	0.00	0.00	0.00	0%	
	Sub-total	383,501,164.01	0.07	0.00	11%	
<b>Money Market Securities</b>						
	Commercial Paper	246,955,714.44	0.12	0.15	6%	A1-P1
	Money Mkt Fund	190,000,000.00	0.04	0.02	5%	
	Certificates of Deposit	60,003,612.34	0.19	0.17	2%	
	Sub-total	496,959,326.78	0.10	0.10	13%	35%
<b>Derivatives</b>						
	Swaps	0.00	0.00	0.00	0%	
	OTC Options	0.00	0.00	0.00	0%	
	Sub-total	0.00	0.00	0.00	0%	
<b>TOTALS</b>		<b>3,869,405,729.57</b>	<b>0.49</b>	<b>1.12</b>	<b>100%</b>	

3/31/2014

**PORTFOLIO SUMMARY  
LIMITED TERM POOL**

	<b>TYPE</b>	<b>MARKET VALUE</b>	<b>MARKET YIELD (%)</b>	<b>DURATION (Years)</b>	<b>PERCENT of TOTAL</b>
Treasuries					
	Bills	164,995,848.45	0.03	0.04	18%
	Treasury Notes	0.00	0.00	0.00	0%
	Sub-total	164,995,848.45	0.00	0.00	18%
Agencies					
	Notes	5,002,780.77	0.15	0.07	1%
	Discounts	111,775,028.05	0.08	0.23	12%
	Sub-total	116,777,808.82	0.08	0.23	13%
Corporates		20,085,055.83	0.36	0.41	2%
Municipals		3,519,755.56	0.80	0.18	0%
Mortgages	CMOs	0.00	0.00	0.00	0%
ABS		6,133,650.25	0.21	0.17	1%
Repurchase Agreements					
	Overnight	247,207,371.44	0.07	0.00	26%
	< 30 days	0.00	0.00	0.00	0%
	< 60 days	0.00	0.00	0.00	0%
	< 90 days	0.00	0.00	0.00	0%
	< 1 year	0.00	0.00	0.00	0%
	Flex Repos	0.00	0.00	0.00	0%
	Sub-total	247,207,371.44	0.07	0.00	26%
Money Market Securities					
	Commercial Paper	199,455,814.34	0.15	0.18	21%
	Money Mkt Fund	130,000,000.00	0.04	0.02	14%
	Certificates of Deposit	50,003,451.39	0.14	0.19	5%
	Sub-total	379,459,265.73	0.11	0.13	40%
<b>TOTALS</b>		<b>938,178,756.08</b>	<b>0.09</b>	<b>0.10</b>	<b>100%</b>

3/31/2014

**PORTFOLIO SUMMARY  
SHORT TERM POOL**

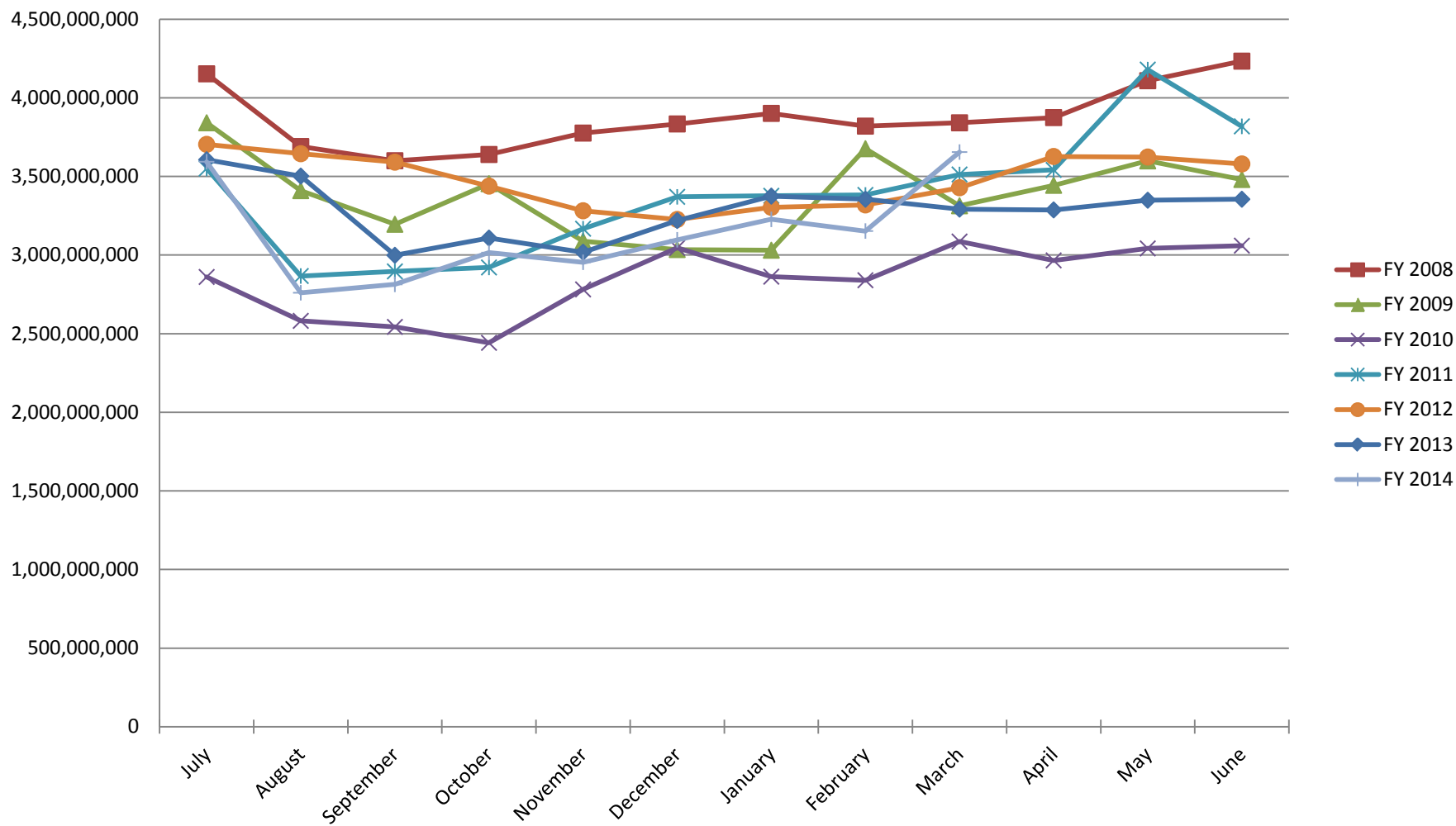
	<b>TYPE</b>	<b>MARKET VALUE</b>	<b>MARKET YIELD (%)</b>	<b>DURATION (Years)</b>	<b>PERCENT of TOTAL</b>
Treasuries					
	Bills	0.00	0.00	0.00	0%
	Treasury Notes	0.00	0.00	0.00	0%
	Sub-total	0.00	0.00	0.00	0%
Agencies					
	Notes	0.00	0.00	0.00	0%
	Discounts	0.00	0.00	0.00	0%
	Sub-total	0.00	0.00	0.00	0%
Corporates		0.00	0.00	0.00	0%
Municipals		0.00	0.00	0.00	0%
Mortgages	CMOs	0.00	0.00	0.00	0%
ABS		0.00	0.00	0.00	0%
Repurchase Agreements					
	Overnight	-83,436,456.65	0.07	0.00	100%
	< 30 days	0.00	0.00	0.00	0%
	< 60 days	0.00	0.00	0.00	0%
	< 90 days	0.00	0.00	0.00	0%
	< 1 year	0.00	0.00	0.00	0%
	Flex Repos	0.00	0.00	0.00	0%
	Sub-total	-83,436,456.65	0.07	0.00	100%
Money Market Securities					
	Commercial Paper	0.00	0.00	0.00	0%
	Money Mkt Fund	0.00	0.00	0.00	0%
	Certificates of Deposit	0.00	0.00	0.00	0%
	Sub-total	0.00	0.00	0.00	0%
<b>TOTALS</b>		<b>-83,436,456.65</b>	<b>0.07</b>	<b>0.00</b>	<b>100%</b>

3/31/2014

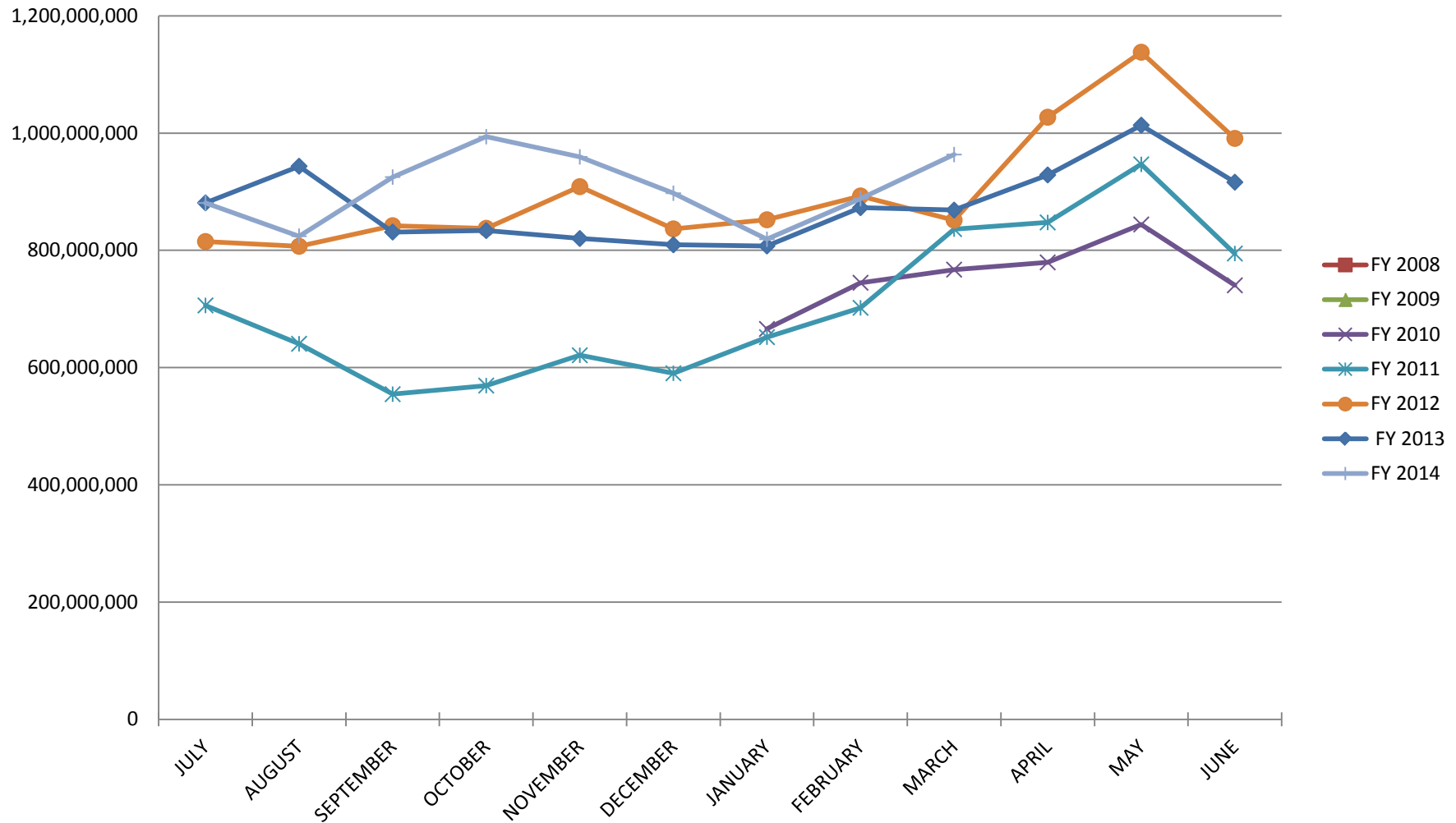
**PORTFOLIO SUMMARY**  
**INTERMEDIATE TERM POOL**

	TYPE	MARKET VALUE	MARKET YIELD (%)	DURATION (Years)	PERCENT of TOTAL
Treasuries					
	Bills	0.00	0.00	0.00	0%
	Treasury Notes	1,284,727,433.41	0.29	1.35	43%
	Sub-total	1,284,727,433.41	0.29	1.35	43%
Agencies					
	Notes	373,131,938.56	0.83	1.74	12%
	Discounts	2,202,971.40	0.37	0.25	0%
	Sub-total	375,334,909.96	0.82	1.74	12%
Municipals					
		50,112,226.55	0.90	0.76	2%
Corporates					
		343,262,868.45	1.11	2.58	11%
Mortgages					
	Pools	206,527,578.33	1.30	0.73	7%
	CMO's	256,456,298.39	1.38	2.32	9%
	Sub-total	462,983,876.72	1.35	1.61	16%
Asset Backed Securities					
		161,011,804.78	0.48	1.17	5%
Repurchase Agreements					
	Overnight	206,229,754.66	0.07	0.00	7%
	< 30 days	12,000,460.39	0.06	0.08	0%
	< 60 days	0.00	0.00	0.00	0%
	< 90 days	1,500,034.17	0.41	0.08	0%
	< 1 year	0.00	0.00	0.00	0%
	Flex Repos	0.00	0.00	0.00	0%
	Sub-total	219,730,249.22	0.07	0.01	7%
Money Market Securities					
	Commercial Paper	47,499,900.10	0.00	0.00	2%
	Money Mkt Fund	60,000,000.00	0.04	0.02	2%
	Certificates of Deposit	10,000,160.95	0.46	0.08	0%
	Sub-total	117,500,061.05	0.06	0.02	4%
Derivatives					
	Swaps	0.00	0.00	0.00	0%
	OTC Options	0.00	0.00	0.00	0%
	Sub-total	0.00	0.00	0.00	0%
<b>TOTALS</b>					
		3,014,663,430.14	0.61	1.41	100%

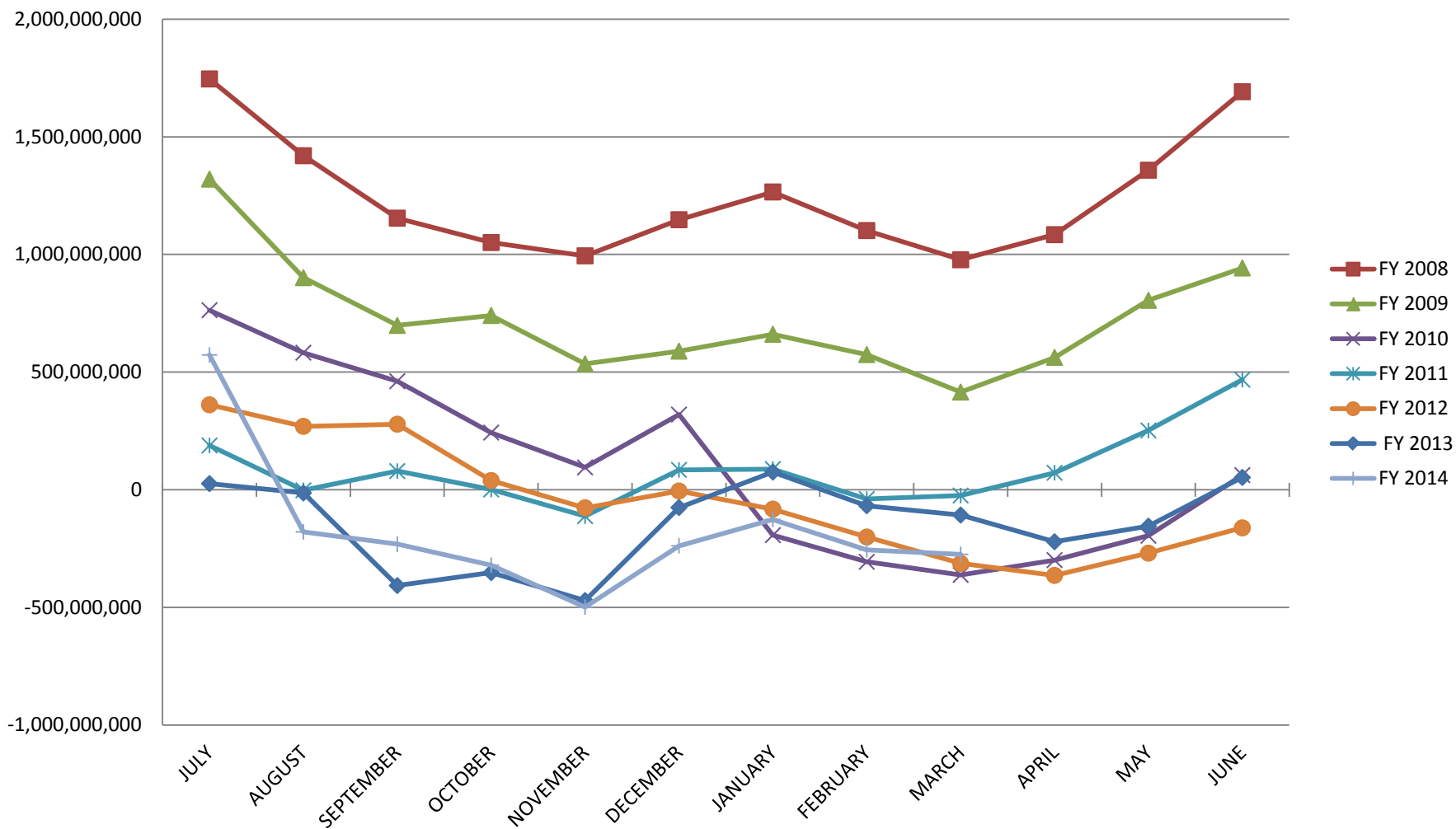
# INVESTABLE BALANCES



## LIMITED POOL INVESTABLE BALANCES

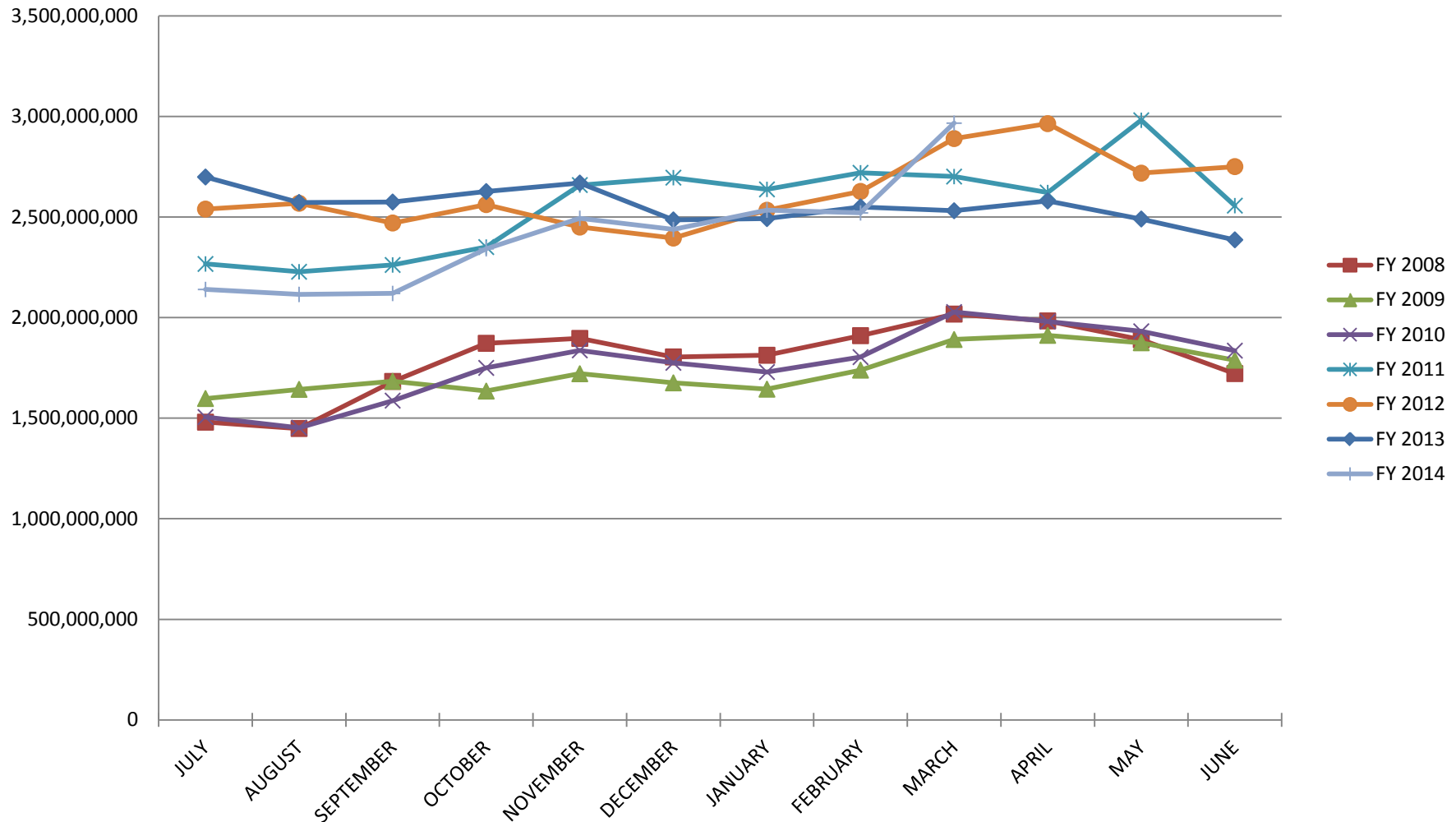


## SHORT TERM POOL INVESTABLE BALANCES

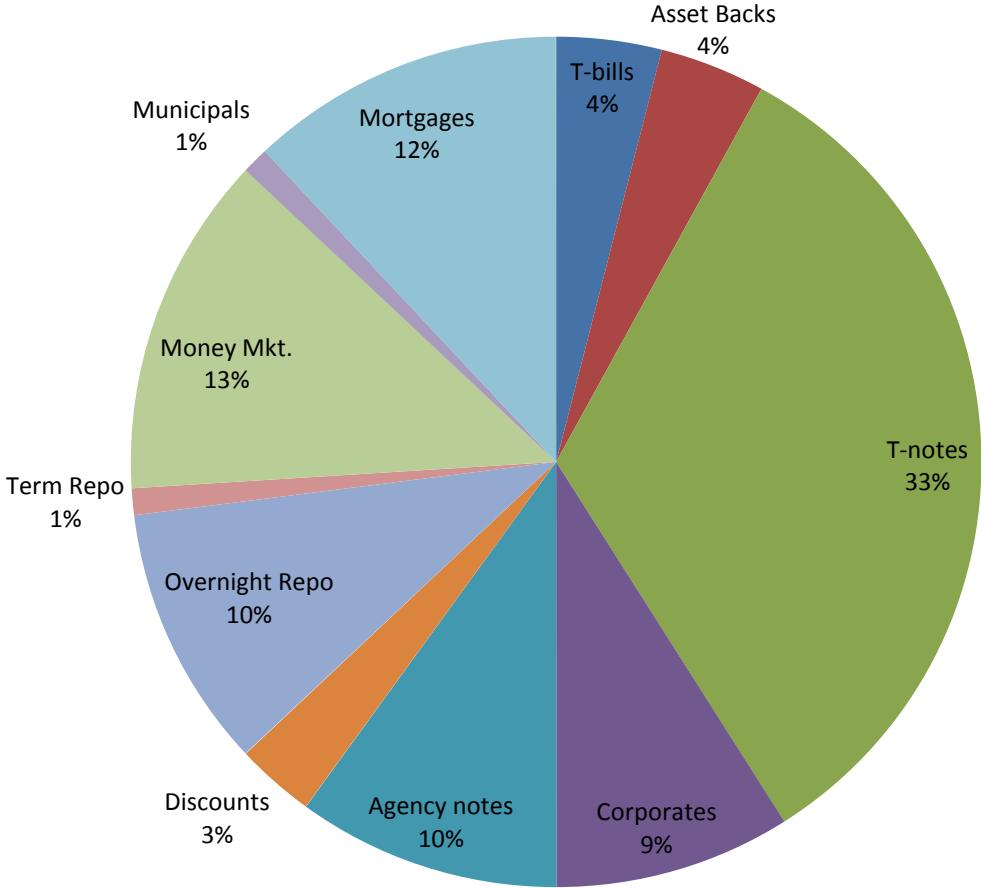




## INTERMEDIATE INVESTABLE BALANCES



# Distribution of Investments for March

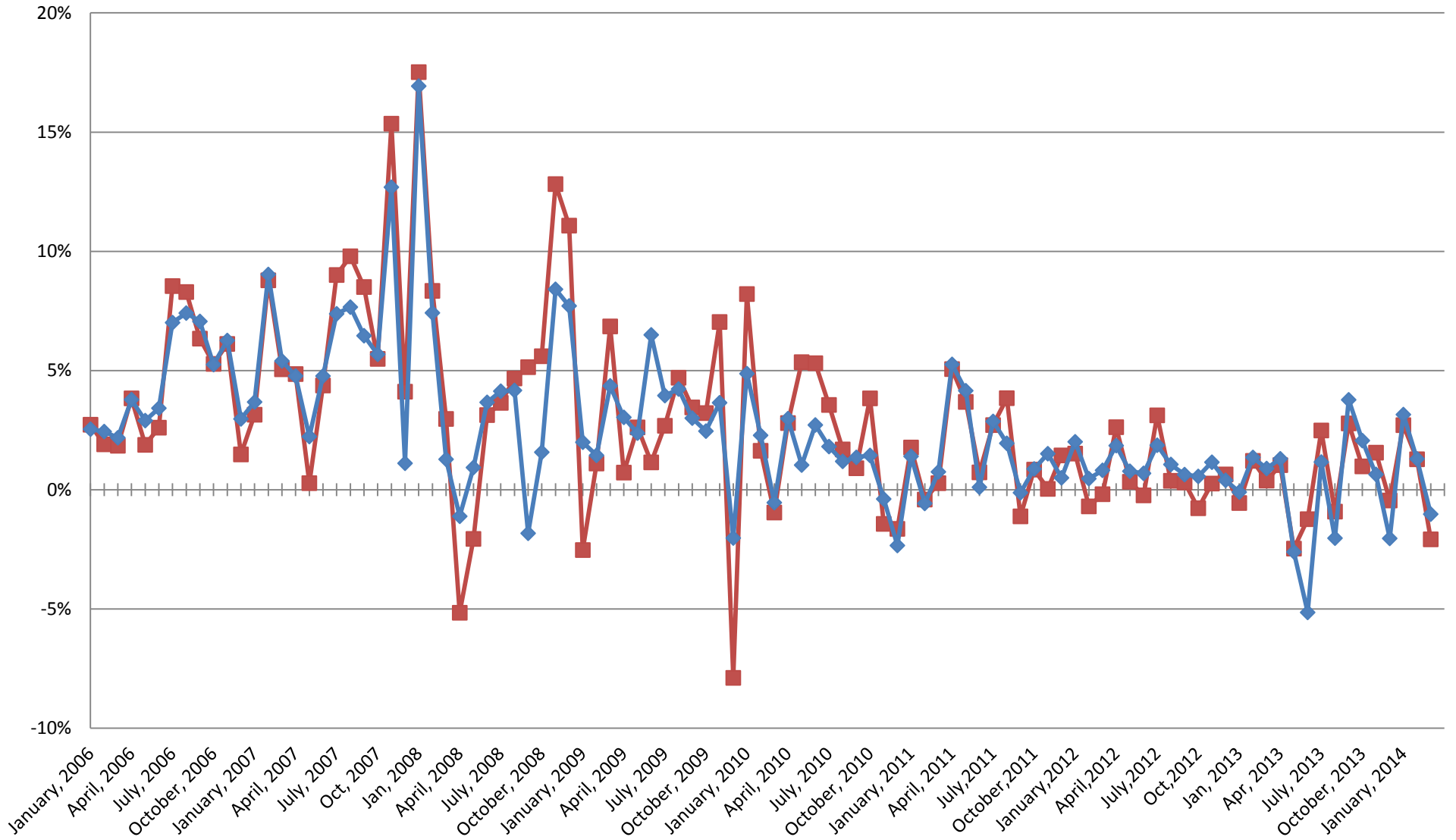


## LIMITS

- Corporates 25%
- Mortgages 25%
- Asset Backs 20%
- Money Mkt. 35%

# INTERMEDIATE POOL ANNUALIZED YIELD

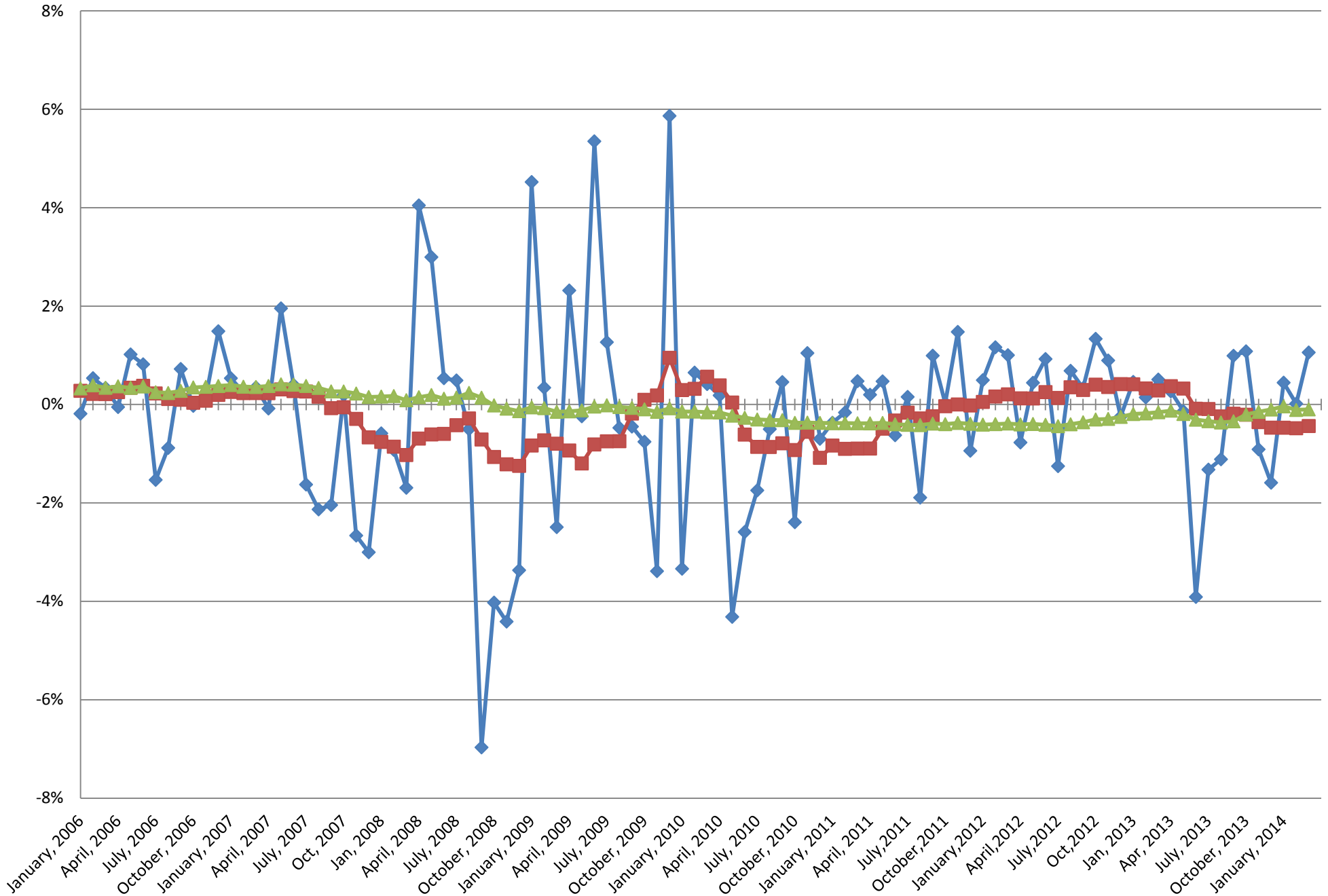
Index  
Pools



Index consists of 70% Government 1-3 year, 15% Mortgage 0-3 and 15% money market

# INTERMEDIATE POOL ANNUALIZED YIELD DIFFERENCE

- Difference
- 12 Month Geometric Average
- 5 Year Geometric Average



### PERFORMANCE RESULTS JULY 1995 THROUGH MARCH 2014

	Intermediate Pool	Benchmark*	Difference (pp)
1 Month	-0.086%	-0.175%	0.089
3 Month	0.281%	0.153%	0.127
FYTD	0.567%	0.684%	-0.117
1 Year	0.013%	0.457%	-0.444
3 Year	0.873%	0.853%	0.020
5 Year	1.267%	1.299%	-0.032
10 Year	2.434%	2.515%	-0.081
Since Inception	3.845%	3.849%	-0.004

\*Benchmark consists of 70% Government 1-3 year, 15% Mortgage 0-3 and 15% money market.

### PERFORMANCE RESULTS JULY 2011 THROUGH MARCH 2014

	Limited Term Pool	Benchmark*	Difference (pp)
1 Month	0.008%	0.004%	0.004
3 Month	0.024%	0.012%	0.012
FYTD	0.071%	0.038%	0.033
1 Year	0.105%	0.053%	0.052
Since Inception	0.142%	0.076%	0.066

\*Benchmark is S&P Local Government Investment Pool