



April 2022  
**MONTHLY**  
**INVESTMENT INCOME REPORT**



**Commonwealth of Kentucky**  
**Holly M. Johnson, Secretary**  
**FINANCE AND ADMINISTRATION CABINET**

**TEAM**  
**KENTUCKY™**

4/30/2022

**PORTFOLIO SUMMARY  
POOLS**

	TYPE	MARKET VALUE	MARKET YIELD (%)	DURATION (Years)	PERCENT of TOTAL
Government					
	Bills	399,840,895.00	0.26	0.07	4.1%
	Treasury Notes	2,105,847,529.77	2.29	1.60	21.5%
	Sovereign	0.00	0.00	0.00	0.0%
	Sub-total	2,505,688,424.77	1.97	1.35	25.6%
Agencies					
	Notes	506,544,680.57	2.73	2.15	5.2%
	Discounts	1,363,962,276.50	0.72	0.14	13.9%
	Sub-total	1,870,506,957.07	1.26	0.68	19.1%
Municipals		0.00	0.00	0.00	0.0%
Corporates		28,952,018.33	1.70	0.72	0.3%
Mortgages					
	Pools	24,420,304.11	3.15	1.67	0.2%
	CMO's	18,672,098.87	3.16	2.90	0.2%
	Sub-total	43,092,402.98	3.16	2.21	0.4%
Asset Backed Securities		96,996,804.31	2.30	0.97	1.0%
Repurchase Agreements					
	Overnight	400,008,666.67	0.26	0.00	4.1%
	< 30 days	0.00	0.00	0.00	0.0%
	< 60 days	0.00	0.00	0.00	0.0%
	< 90 days	0.00	0.00	0.00	0.0%
	< 1 year	0.00	0.00	0.00	0.0%
	Flex Repos	0.00	0.00	0.00	0.0%
	Sub-total	400,008,666.67	0.26	0.00	4.1%
Money Market Securities					
	Commercial Paper	0.00	0.00	0.00	0.0%
	Money Mkt Fund	4,850,000,000.00	0.28	0.08	49.5%
	Certificates of Deposit	0.00	0.00	0.00	0.0%
	Sub-total	4,850,000,000.00	0.28	0.08	49.5%
Derivatives					
	Swaps	0.00	0.00	0.00	0.0%
	OTC Options	0.00	0.00	0.00	0.0%
	Sub-total	0.00	0.00	0.00	0.0%
<b>TOTALS</b>		<b>9,795,245,274.13</b>	<b>0.94</b>	<b>0.54</b>	<b>100.0%</b>

4/30/2022

**PORTFOLIO SUMMARY  
INTERMEDIATE TERM POOL**

	TYPE	MARKET VALUE	MARKET YIELD (%)	DURATION (Years)	PERCENT of TOTAL
Government					
	Bills	0.00	0.00	0.00	0.0%
	Treasury Notes	2,105,847,529.77	2.29	1.60	66.4%
	Sovereign	0.00	0.00	0.00	0.0%
	Sub-total	2,105,847,529.77	2.29	1.60	66.4%
Agencies					
	Notes	506,544,680.57	2.73	2.15	16.0%
	Discounts	0.00	0.00	0.00	0.0%
	Sub-total	506,544,680.57	2.73	2.15	16.0%
Municipals		0.00	0.00	0.00	0.0%
Corporates		28,952,018.33	1.70	0.72	0.9%
Mortgages					
	Pools	24,420,304.11	3.15	1.67	0.8%
	CMO's	18,672,098.87	3.16	2.90	0.6%
	Sub-total	43,092,402.98	3.16	2.21	1.4%
Asset Backed Securities		96,996,804.31	2.30	0.97	3.1%
Repurchase Agreements					
	Overnight	291,718,082.72	0.26	0.00	9.2%
	< 30 days	0.00	0.00	0.00	0.0%
	< 60 days	0.00	0.00	0.00	0.0%
	< 90 days	0.00	0.00	0.00	0.0%
	< 1 year	0.00	0.00	0.00	0.0%
	Flex Repos	0.00	0.00	0.00	0.0%
	Sub-total	291,718,082.72	0.26	0.00	9.2%
Money Market Securities					
	Commercial Paper	0.00	0.00	0.00	0.0%
	Money Mkt Fund	100,000,000.00	0.32	0.11	3.2%
	Certificates of Deposit	0.00	0.00	0.00	0.0%
	Sub-total	100,000,000.00	0.32	0.11	3.2%
Derivatives					
	Swaps	0.00	0.00	0.00	0.0%
	OTC Options	0.00	0.00	0.00	0.0%
	Sub-total	0.00	0.00	0.00	0.0%
<b>TOTALS</b>		3,173,151,518.68	2.12	1.47	100.0%

4/30/2022

**PORTFOLIO SUMMARY  
LIMITED TERM POOL**

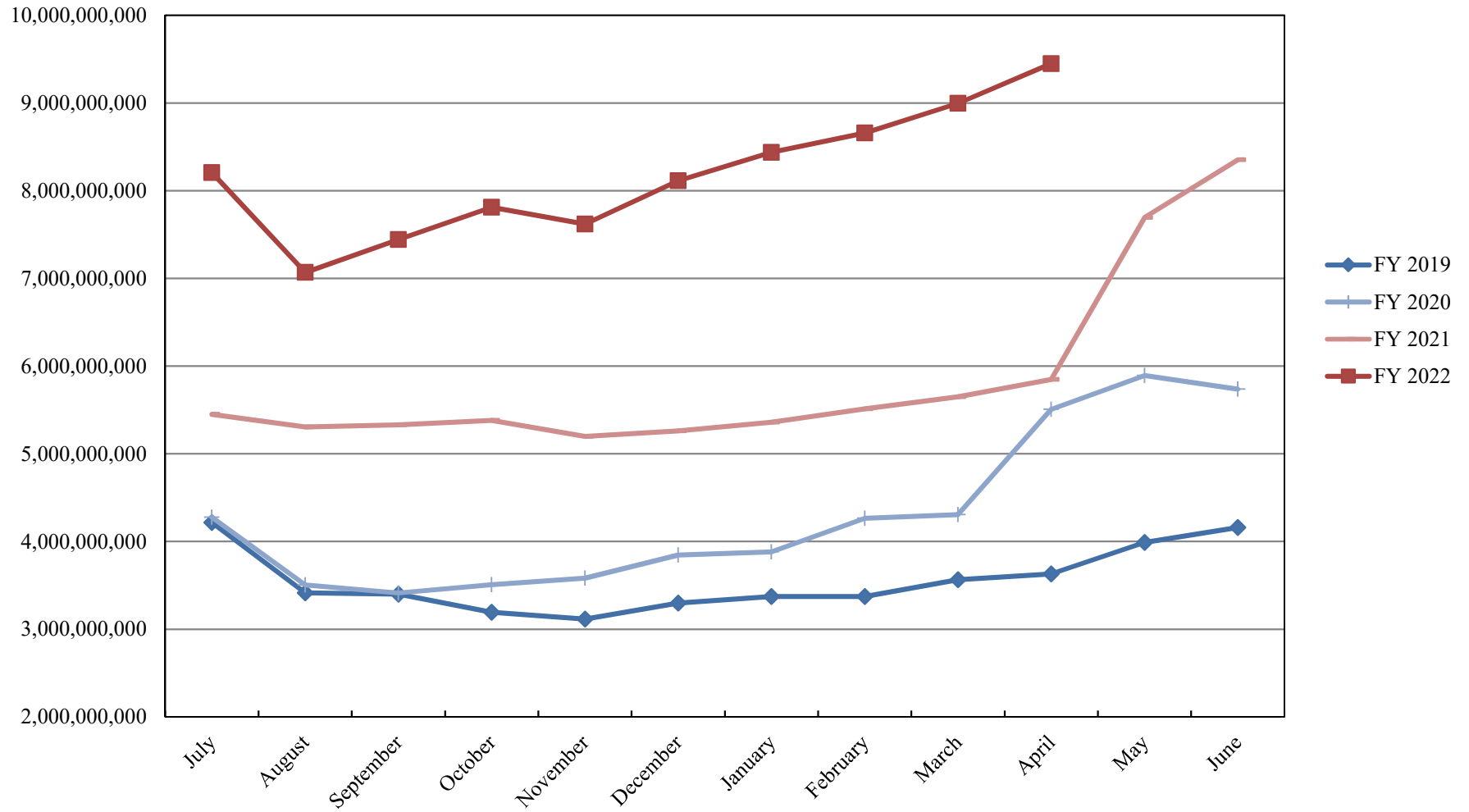
	TYPE	MARKET VALUE	MARKET YIELD (%)	DURATION (Years)	PERCENT of TOTAL
Government					
	Bills	399,840,895.00	0.26	0.07	17.0%
	Treasury Notes	0.00	0.00	0.00	0.0%
	Supranational	0.00	0.00	0.00	0.0%
	Sovereign	0.00	0.00	0.00	0.0%
	Sub-total	399,840,895.00	0.26	0.07	17.0%
Agencies					
	Notes	0.00	0.00	0.00	0.0%
	Discounts	1,363,962,276.50	0.72	0.14	57.9%
	Sub-total	1,363,962,276.50	0.72	0.14	57.9%
Corporates		0.00	0.00	0.00	0.0%
Municipals		0.00	0.00	0.00	0.0%
Mortgages		0.00	0.00	0.00	0.0%
ABS		0.00	0.00	0.00	0.0%
Repurchase Agreements					
	Overnight	392,469,349.51	0.26	0.00	16.7%
	< 30 days	0.00	0.00	0.00	0.0%
	< 60 days	0.00	0.00	0.00	0.0%
	< 90 days	0.00	0.00	0.00	0.0%
	< 1 year	0.00	0.00	0.00	0.0%
	Flex Repos	0.00	0.00	0.00	0.0%
	Sub-total	392,469,349.51	0.26	0.00	16.7%
Money Market Securities					
	Commercial Paper	0.00	0.00	0.00	0.0%
	Money Mkt Fund	200,000,000.00	0.26	0.06	8.5%
	Certificates of Deposit	0.00	0.00	0.00	0.0%
	Sub-total	200,000,000.00	0.26	0.06	8.5%
<b>TOTALS</b>		2,356,272,521.01	0.53	0.10	100.0%

4/30/2022

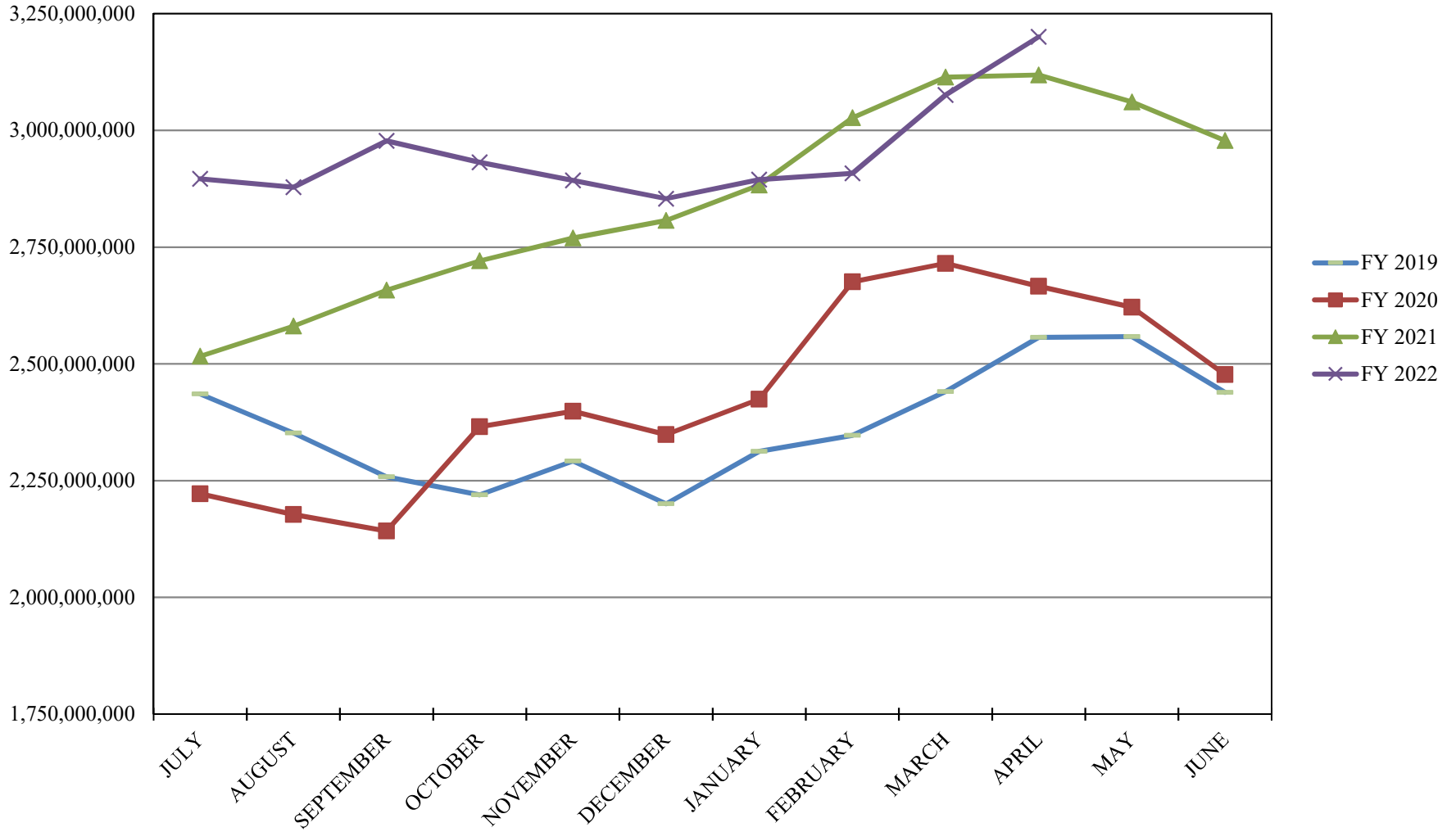
**PORTFOLIO SUMMARY  
SHORT TERM POOL**

	TYPE	MARKET VALUE	MARKET YIELD (%)	DURATION (Years)	PERCENT of TOTAL
Government					
	Bills	0.00	0.00	0.00	0.0%
	Treasury Notes	0.00	0.00	0.00	0.0%
	Supranational	0.00	0.00	0.00	0.0%
	Sovereign	0.00	0.00	0.00	0.0%
	Sub-total	0.00	0.00	0.00	0.0%
Agencies					
	Notes	0.00	0.00	0.00	0.0%
	Discounts	0.00	0.00	0.00	0.0%
	Sub-total	0.00	0.00	0.00	0.0%
Corporates		0.00	0.00	0.00	0.0%
Municipals		0.00	0.00	0.00	0.0%
Mortgages	CMOs	0.00	0.00	0.00	0.0%
ABS		0.00	0.00	0.00	0.0%
Repurchase Agreements					
	Overnight	-284,178,765.56	0.26	0.00	-6.7%
	< 30 days	0.00	0.00	0.00	0.0%
	< 60 days	0.00	0.00	0.00	0.0%
	< 90 days	0.00	0.00	0.00	0.0%
	< 1 year	0.00	0.00	0.00	0.0%
	Flex Repos	0.00	0.00	0.00	0.0%
	Sub-total	-284,178,765.56	0.26	0.00	-6.7%
Money Market Securities					
	Commercial Paper	0.00	0.00	0.00	0.0%
	Money Mkt Fund	4,550,000,000.00	0.28	0.08	106.7%
	Certificates of Deposit	0.00	0.00	0.00	0.0%
	Sub-total	4,550,000,000.00	0.28	0.08	106.7%
<b>TOTALS</b>		4,265,821,234.44	0.28	0.08	100.0%

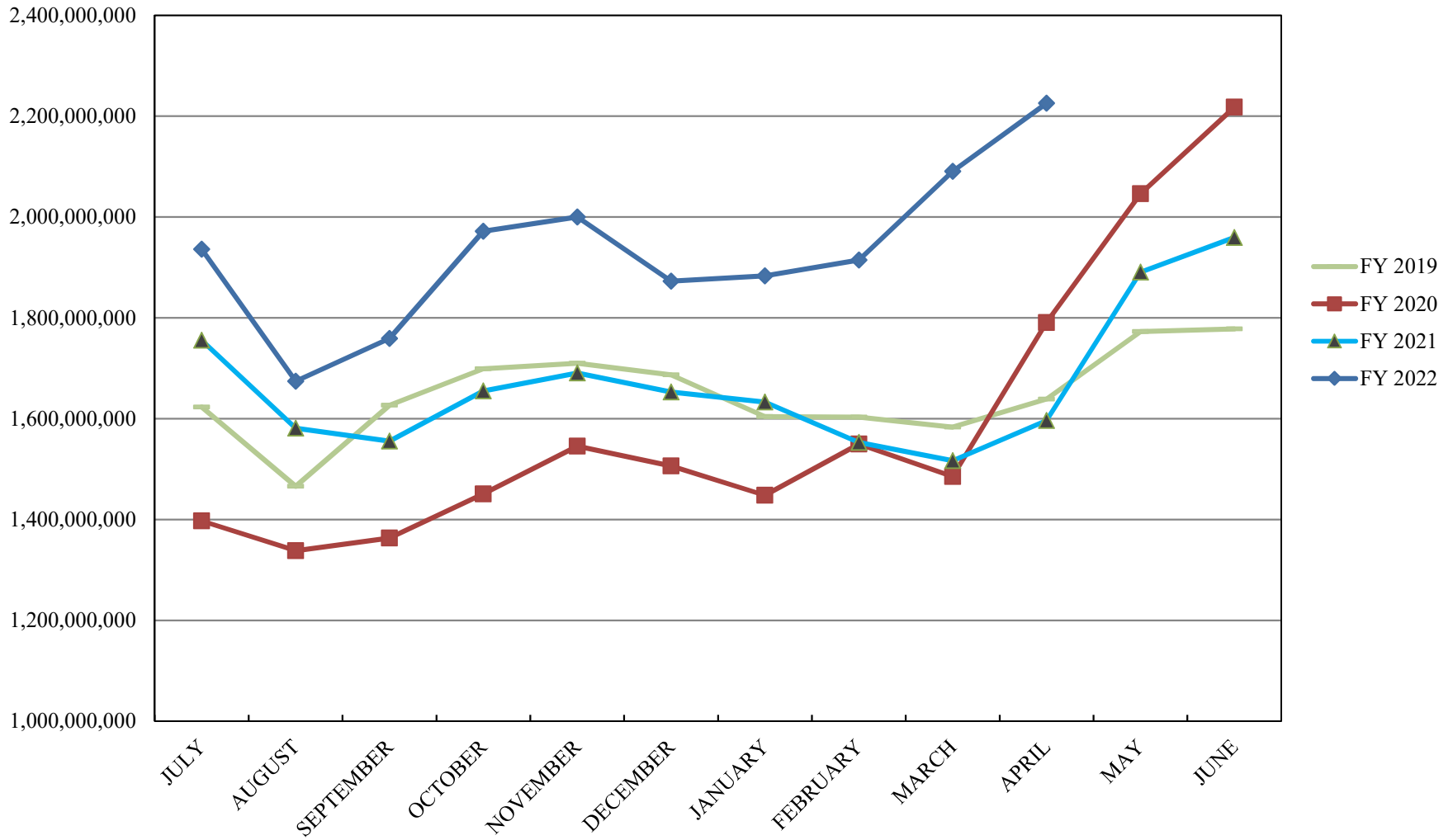
# INVESTABLE BALANCES



# INTERMEDIATE INVESTABLE BALANCES

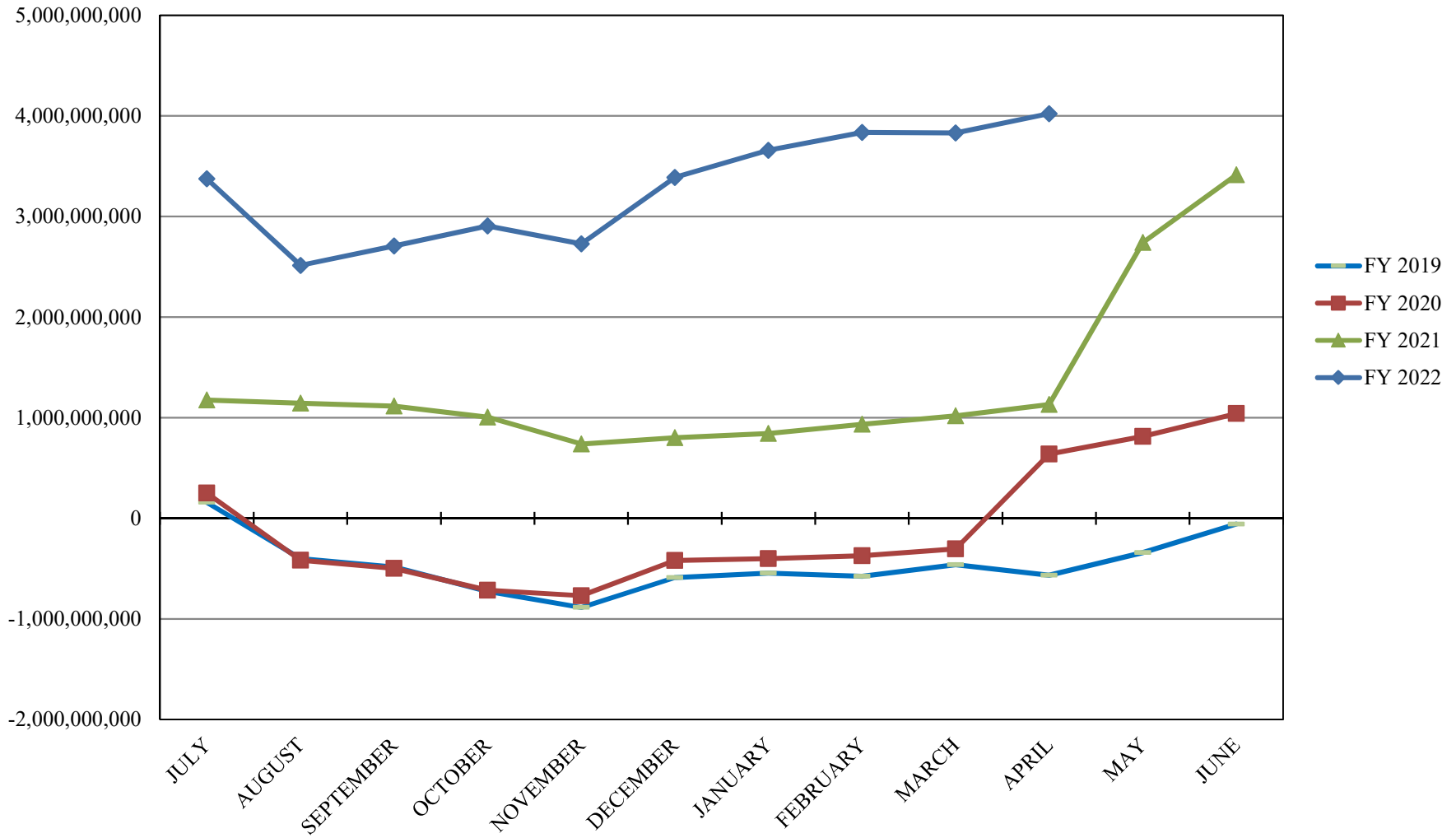


# LIMITED POOL INVESTABLE BALANCES

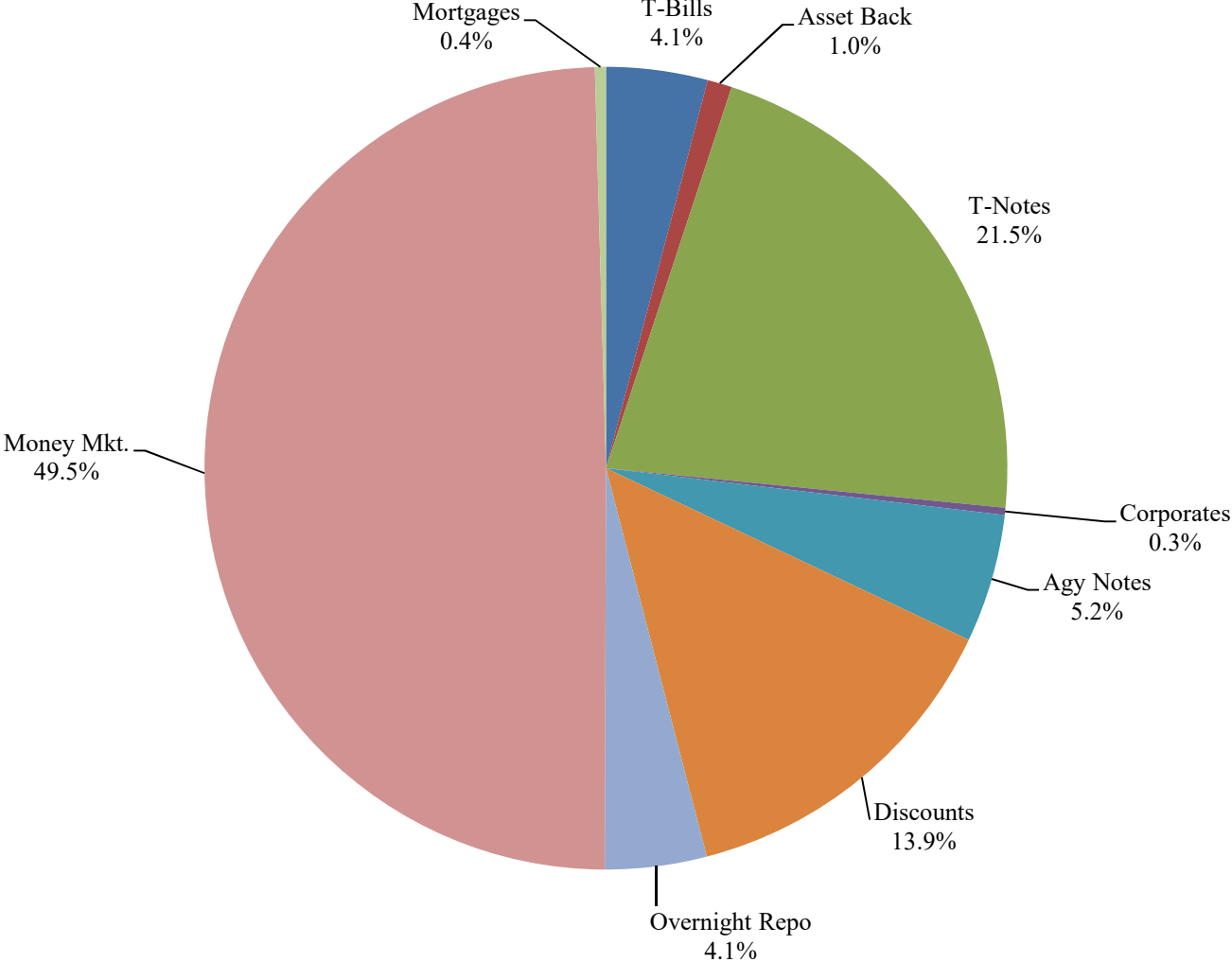




# SHORT TERM POOL INVESTABLE BALANCES



# Distribution of Investments for April



### PERFORMANCE RESULTS JULY 1995 THROUGH APRIL 2022

	Intermediate Pool	Benchmark A*	Benchmark B**
	Period Return	Period Return	Period Return
1 Month	-0.335%	-0.514%	-0.156%
3 Month	-1.629%	-2.086%	-0.610%
6 Month	-2.267%	-2.861%	-0.960%
FYTD	-2.417%	-3.074%	-0.963%
1 Year	-2.458%	-3.239%	-0.967%
3 Year	0.385%	0.551%	0.830%
5 Year	0.946%	0.935%	1.150%
10 Year	0.798%	0.762%	0.742%
Since Inception	2.946%	3.042%	2.601%

\*Benchmark A consists of 70% Government 1-3 year, 15% Mortgage 0-3 and 15% money market.

\*\*Benchmark B consists of 85% U.S. Treasury 1-Year Note Index and 15% Fed Funds Rate Index.

Returns less than a year are unannualized.

Intermediate Pool returns for all time periods listed are gross of management fee. Management fee is 0.07%, annualized.

### PERFORMANCE RESULTS JULY 2011 THROUGH APRIL 2022

	Limited Pool	Benchmark A*	Benchmark B**
	Period Return	Period Return	Period Return
1 Month	0.029%	0.023%	0.028%
3 Month	0.049%	0.034%	0.050%
6 Month	0.059%	0.044%	0.071%
FYTD	0.071%	0.056%	0.102%
1 Year	0.073%	0.057%	0.113%
3 Year	0.648%	0.696%	0.640%
5 Year	1.069%	1.084%	1.073%
10 Year	0.645%	0.630%	0.644%
Since Inception	0.604%	0.588%	0.602%

\*Benchmark A is S&P AAA & AA Rated GIP All 7 Day Net Yield

\*\*Benchmark B is Fed Funds Rate Index

Returns less than a year are unannualized.

Limited Pool returns for all time periods listed are gross of management fee. Management fee is 0.07%, annualized.