



February 2022  
**MONTHLY**  
**INVESTMENT INCOME REPORT**



**Commonwealth of Kentucky**  
**Holly M. Johnson, Secretary**  
**FINANCE AND ADMINISTRATION CABINET**

**TEAM**  
**KENTUCKY™**

2/28/2022

**PORTFOLIO SUMMARY  
POOLS**

	TYPE	MARKET VALUE	MARKET YIELD (%)	DURATION (Years)	PERCENT of TOTAL
Government					
	Bills	599,885,036.00	0.15	0.12	6.6%
	Treasury Notes	1,937,794,087.38	1.26	1.61	21.2%
	Sovereign	0.00	0.00	0.00	0.0%
	Sub-total	2,537,679,123.38	1.00	1.26	27.7%
Agencies					
	Notes	467,647,743.06	1.59	2.06	5.1%
	Discounts	989,834,957.80	0.19	0.10	10.8%
	Sub-total	1,457,482,700.86	0.64	0.73	15.9%
Municipals		0.00	0.00	0.00	0.0%
Corporates		49,333,925.56	1.46	0.53	0.5%
Mortgages					
	Pools	25,919,845.41	1.89	0.92	0.3%
	CMO's	21,908,470.12	2.04	2.46	0.2%
	Sub-total	47,828,315.53	1.96	1.63	0.5%
Asset Backed Securities		112,906,375.34	1.24	1.00	1.2%
Repurchase Agreements					
	Overnight	400,000,388.89	0.04	0.00	4.4%
	< 30 days	0.00	0.00	0.00	0.0%
	< 60 days	0.00	0.00	0.00	0.0%
	< 90 days	0.00	0.00	0.00	0.0%
	< 1 year	0.00	0.00	0.00	0.0%
	Flex Repos	0.00	0.00	0.00	0.0%
	Sub-total	400,000,388.89	0.04	0.00	4.4%
Money Market Securities					
	Commercial Paper	0.00	0.00	0.00	0.0%
	Money Mkt Fund	4,550,000,000.00	0.02	0.07	49.7%
	Certificates of Deposit	0.00	0.00	0.00	0.0%
	Sub-total	4,550,000,000.00	0.02	0.07	49.7%
Derivatives					
	Swaps	0.00	0.00	0.00	0.0%
	OTC Options	0.00	0.00	0.00	0.0%
	Sub-total	0.00	0.00	0.00	0.0%
<b>TOTALS</b>		9,155,230,829.56	0.42	0.52	100.0%

2/28/2022

**PORTFOLIO SUMMARY**  
**INTERMEDIATE TERM POOL**

	TYPE	MARKET VALUE	MARKET YIELD (%)	DURATION (Years)	PERCENT of TOTAL
Government					
	Bills	0.00	0.00	0.00	0.0%
	Treasury Notes	1,937,794,087.38	1.26	1.61	65.6%
	Sovereign	0.00	0.00	0.00	0.0%
	Sub-total	1,937,794,087.38	1.26	1.61	65.6%
Agencies					
	Notes	467,647,743.06	1.59	2.06	15.8%
	Discounts	0.00	0.00	0.00	0.0%
	Sub-total	467,647,743.06	1.59	2.06	15.8%
Municipals		0.00	0.00	0.00	0.0%
Corporates		49,333,925.56	1.46	0.53	1.7%
Mortgages					
	Pools	25,919,845.41	1.89	0.92	0.9%
	CMO's	21,908,470.12	2.04	2.46	0.7%
	Sub-total	47,828,315.53	1.96	1.63	1.6%
Asset Backed Securities		112,906,375.34	1.24	1.00	3.8%
Repurchase Agreements					
	Overnight	237,088,682.44	0.04	0.00	8.0%
	< 30 days	0.00	0.00	0.00	0.0%
	< 60 days	0.00	0.00	0.00	0.0%
	< 90 days	0.00	0.00	0.00	0.0%
	< 1 year	0.00	0.00	0.00	0.0%
	Flex Repos	0.00	0.00	0.00	0.0%
	Sub-total	237,088,682.44	0.04	0.00	8.0%
Money Market Securities					
	Commercial Paper	0.00	0.00	0.00	0.0%
	Money Mkt Fund	100,000,000.00	0.03	0.04	3.4%
	Certificates of Deposit	0.00	0.00	0.00	0.0%
	Sub-total	100,000,000.00	0.03	0.04	3.4%
Derivatives					
	Swaps	0.00	0.00	0.00	0.0%
	OTC Options	0.00	0.00	0.00	0.0%
	Sub-total	0.00	0.00	0.00	0.0%
<b>TOTALS</b>		<b>2,952,599,129.31</b>	<b>1.18</b>	<b>1.46</b>	<b>100.0%</b>

2/28/2022

**PORTFOLIO SUMMARY  
LIMITED TERM POOL**

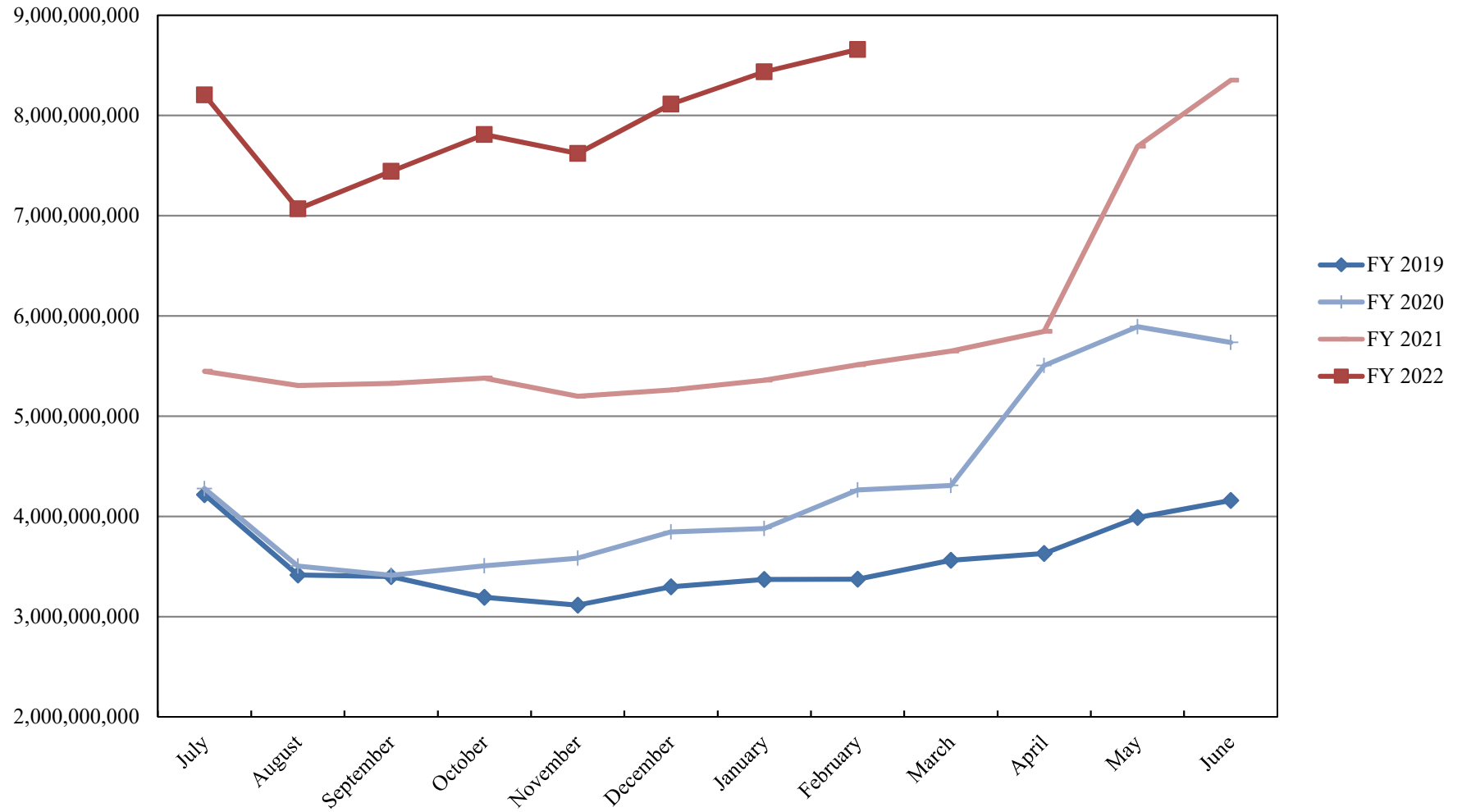
	TYPE	MARKET VALUE	MARKET YIELD (%)	DURATION (Years)	PERCENT of TOTAL
Government					
	Bills	599,885,036.00	0.15	0.12	26.6%
	Treasury Notes	0.00	0.00	0.00	0.0%
	Supranational	0.00	0.00	0.00	0.0%
	Sovereign	0.00	0.00	0.00	0.0%
	Sub-total	599,885,036.00	0.00	0.00	26.6%
Agencies					
	Notes	0.00	0.00	0.00	0.0%
	Discounts	989,834,957.80	0.19	0.10	43.9%
	Sub-total	989,834,957.80	0.19	0.10	43.9%
Corporates		0.00	0.00	0.00	0.0%
Municipals		0.00	0.00	0.00	0.0%
Mortgages		0.00	0.00	0.00	0.0%
ABS		0.00	0.00	0.00	0.0%
Repurchase Agreements					
	Overnight	337,952,352.03	0.04	0.00	15.0%
	< 30 days	0.00	0.00	0.00	0.0%
	< 60 days	0.00	0.00	0.00	0.0%
	< 90 days	0.00	0.00	0.00	0.0%
	< 1 year	0.00	0.00	0.00	0.0%
	Flex Repos	0.00	0.00	0.00	0.0%
	Sub-total	337,952,352.03	0.04	0.00	15.0%
Money Market Securities					
	Commercial Paper	0.00	0.00	0.00	0.0%
	Money Mkt Fund	325,000,000.00	0.03	0.07	14.4%
	Certificates of Deposit	0.00	0.00	0.00	0.0%
	Sub-total	325,000,000.00	0.03	0.07	14.4%
<b>TOTALS</b>		<b>2,252,672,345.83</b>	<b>0.13</b>	<b>0.09</b>	<b>100.0%</b>

2/28/2022

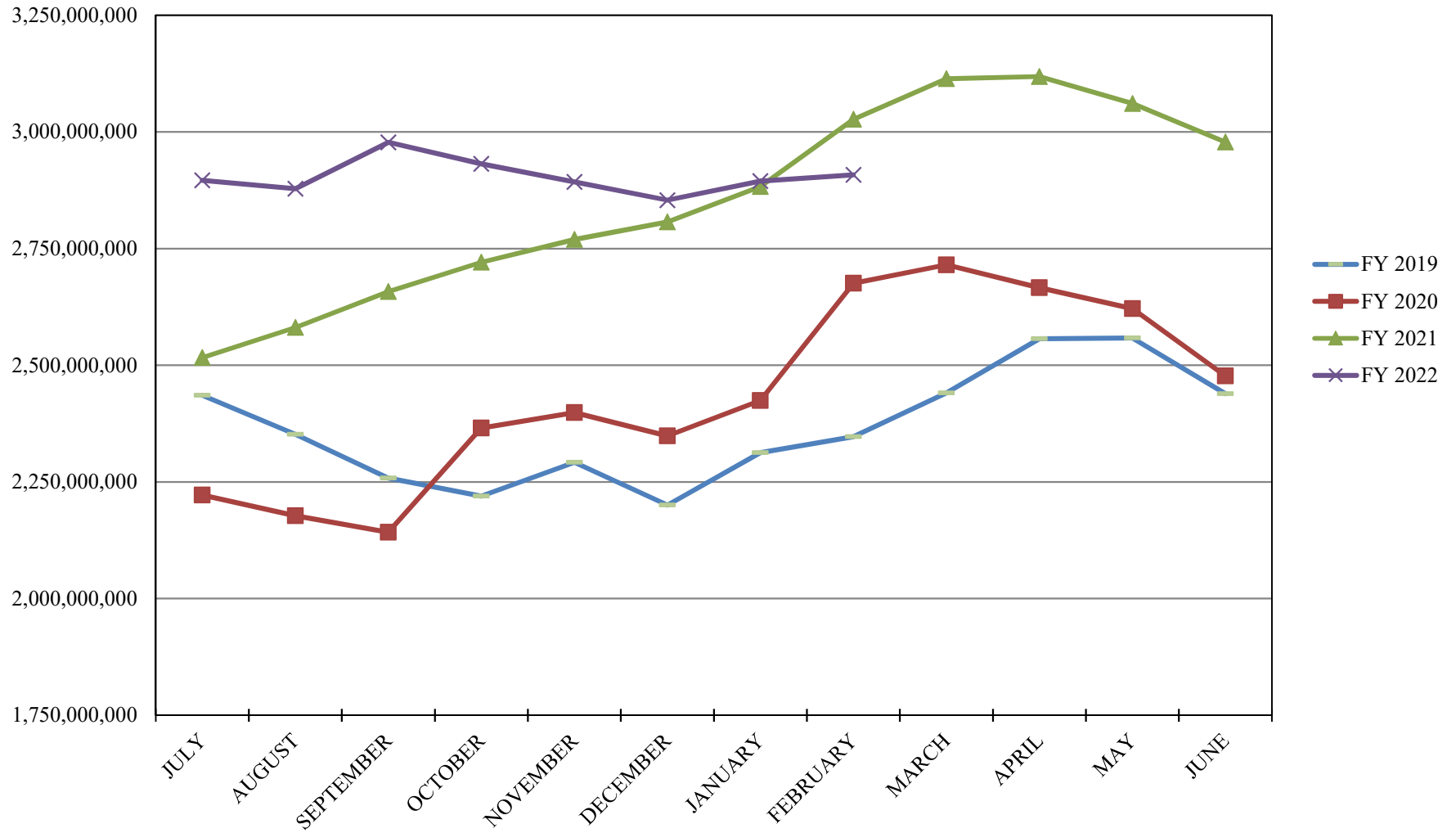
**PORTFOLIO SUMMARY  
SHORT TERM POOL**

	TYPE	MARKET VALUE	MARKET YIELD (%)	DURATION (Years)	PERCENT of TOTAL
Government					
	Bills	0.00	0.00	0.00	0.0%
	Treasury Notes	0.00	0.00	0.00	0.0%
	Supranational	0.00	0.00	0.00	0.0%
	Sovereign	0.00	0.00	0.00	0.0%
	Sub-total	0.00	0.00	0.00	0.0%
Agencies					
	Notes	0.00	0.00	0.00	0.0%
	Discounts	0.00	0.00	0.00	0.0%
	Sub-total	0.00	0.00	0.00	0.0%
Corporates		0.00	0.00	0.00	0.0%
Municipals		0.00	0.00	0.00	0.0%
Mortgages	CMOs	0.00	0.00	0.00	0.0%
ABS		0.00	0.00	0.00	0.0%
Repurchase Agreements					
	Overnight	-175,040,645.58	0.04	0.00	-4.4%
	< 30 days	0.00	0.00	0.00	0.0%
	< 60 days	0.00	0.00	0.00	0.0%
	< 90 days	0.00	0.00	0.00	0.0%
	< 1 year	0.00	0.00	0.00	0.0%
	Flex Repos	0.00	0.00	0.00	0.0%
	Sub-total	-175,040,645.58	0.04	0.00	-4.4%
Money Market Securities					
	Commercial Paper	0.00	0.00	0.00	0.0%
	Money Mkt Fund	4,125,000,000.00	0.02	0.07	104.4%
	Certificates of Deposit	0.00	0.00	0.00	0.0%
	Sub-total	4,125,000,000.00	0.02	0.07	104.4%
<b>TOTALS</b>		3,949,959,354.42	0.02	0.07	100.0%

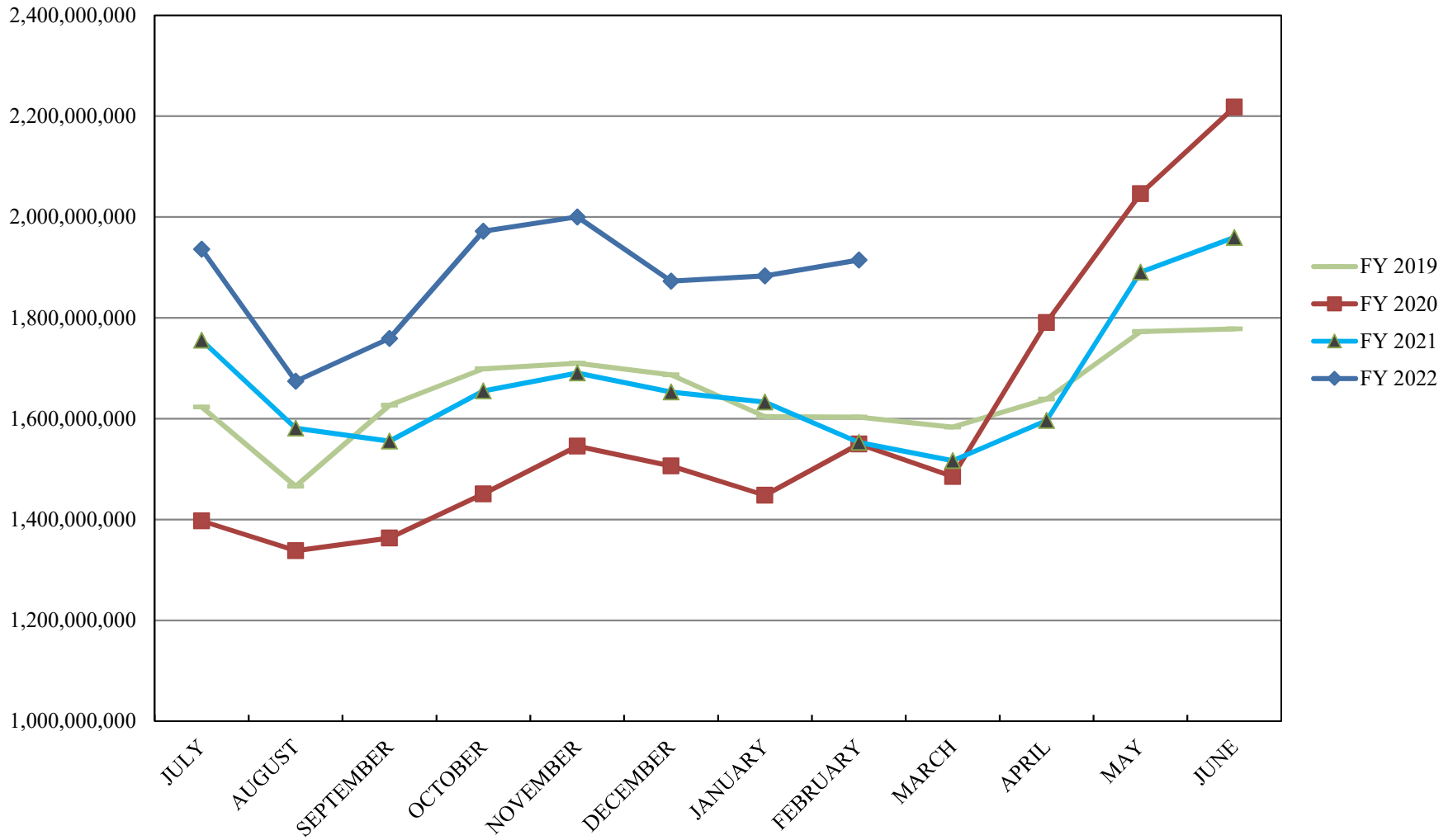
# INVESTABLE BALANCES



# INTERMEDIATE INVESTABLE BALANCES

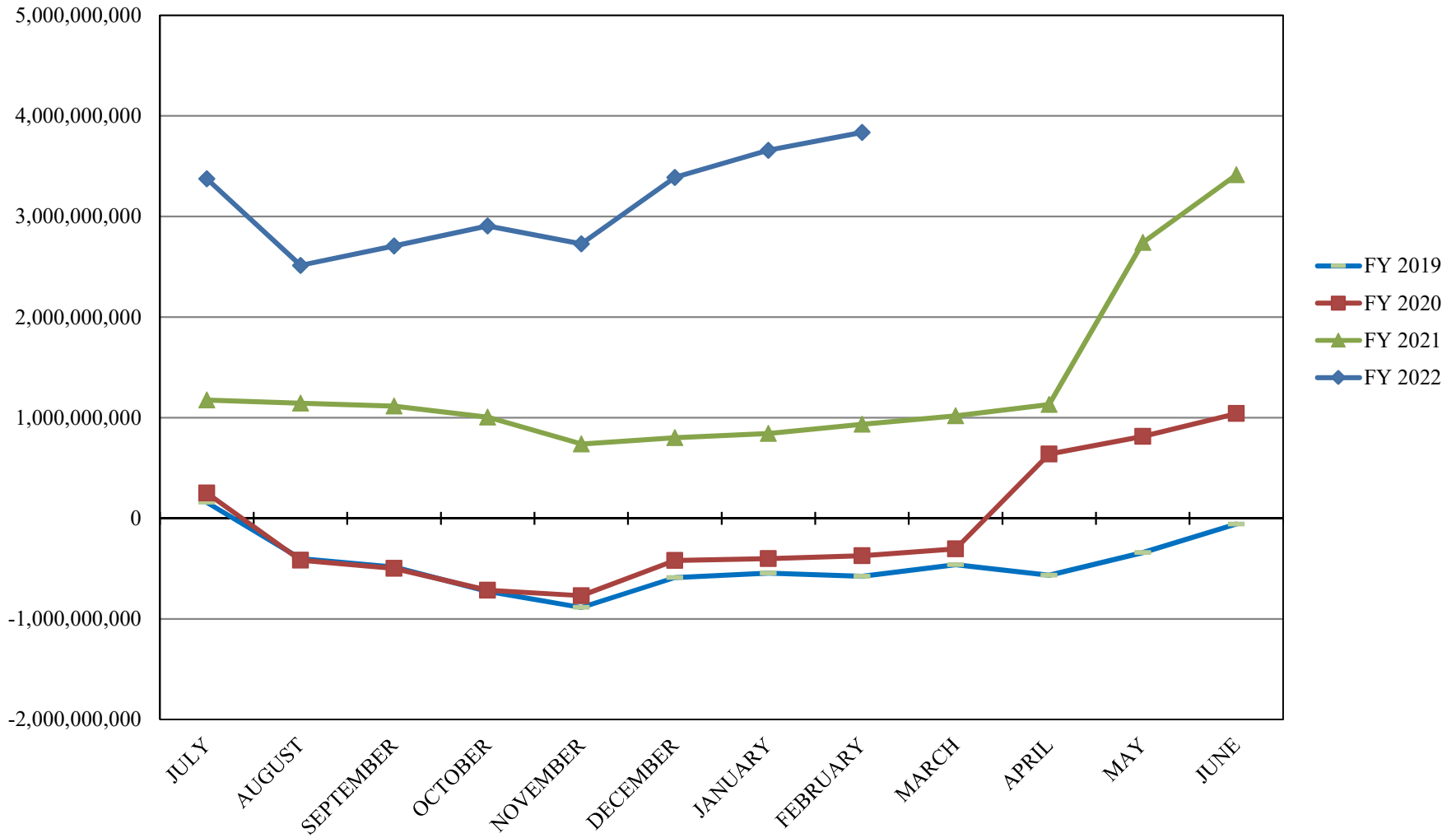


# LIMITED POOL INVESTABLE BALANCES

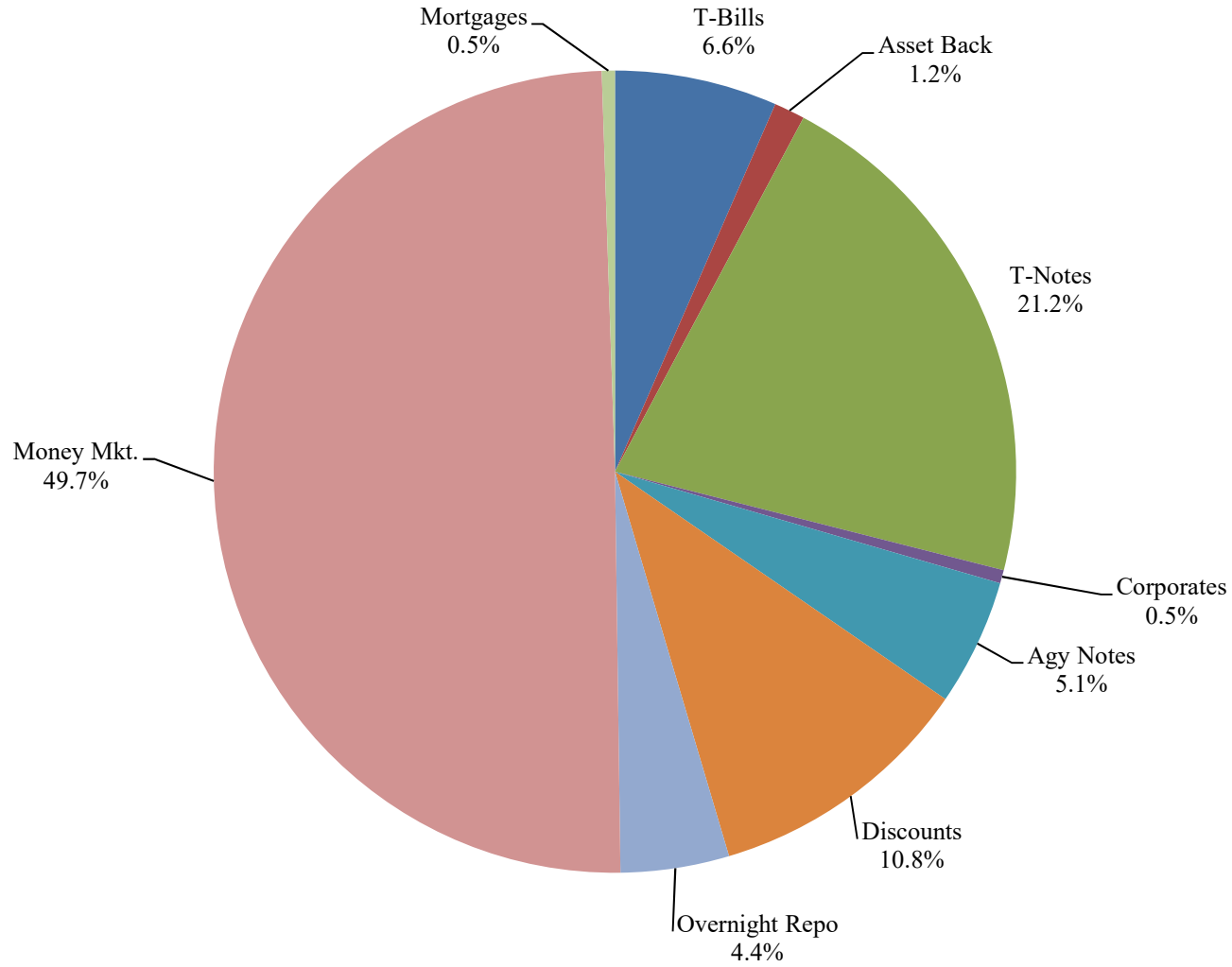




## SHORT TERM POOL INVESTABLE BALANCES



# Distribution of Investments for February



## PERFORMANCE RESULTS JULY 1995 THROUGH FEBRUARY 2022

	Intermediate Pool	Benchmark A*	Benchmark B**
	Period Return	Period Return	Period Return
1 Month	-0.292%	-0.403%	-0.131%
3 Month	-0.912%	-1.182%	-0.443%
6 Month	-1.210%	-1.539%	-0.516%
FYTD	-1.091%	-1.408%	-0.486%
1 Year	-1.081%	-1.574%	-0.442%
3 Year	1.037%	1.390%	1.174%
5 Year	1.259%	1.315%	1.258%
10 Year	0.956%	0.955%	0.794%
Since Inception	3.017%	3.127%	2.636%

\*Benchmark A consists of 70% Government 1-3 year, 15% Mortgage 0-3 and 15% money market.

\*\*Benchmark B consists of 85% U.S. Treasury 1-Year Note Index and 15% Fed Funds Rate Index.

Returns less than a year are unannualized.

Intermediate Pool returns for all time periods listed are gross of management fee. Management fee is 0.07%, annualized.

## PERFORMANCE RESULTS JULY 2011 THROUGH FEBRUARY 2022

	Limited Pool	Benchmark A*	Benchmark B**
	Period Return	Period Return	Period Return
1 Month	0.007%	0.004%	0.006%
3 Month	0.014%	0.011%	0.020%
6 Month	0.023%	0.019%	0.041%
FYTD	0.028%	0.025%	0.058%
1 Year	0.057%	0.036%	0.081%
3 Year	0.769%	0.821%	0.762%
5 Year	1.092%	1.103%	1.092%
10 Year	0.643%	0.629%	0.642%
Since Inception	0.610%	0.595%	0.607%

\*Benchmark A is S&P AAA & AA Rated GIP All 7 Day Net Yield

\*\*Benchmark B is Fed Funds Rate Index

Returns less than a year are unannualized.

Limited Pool returns for all time periods listed are gross of management fee. Management fee is 0.07%, annualized.