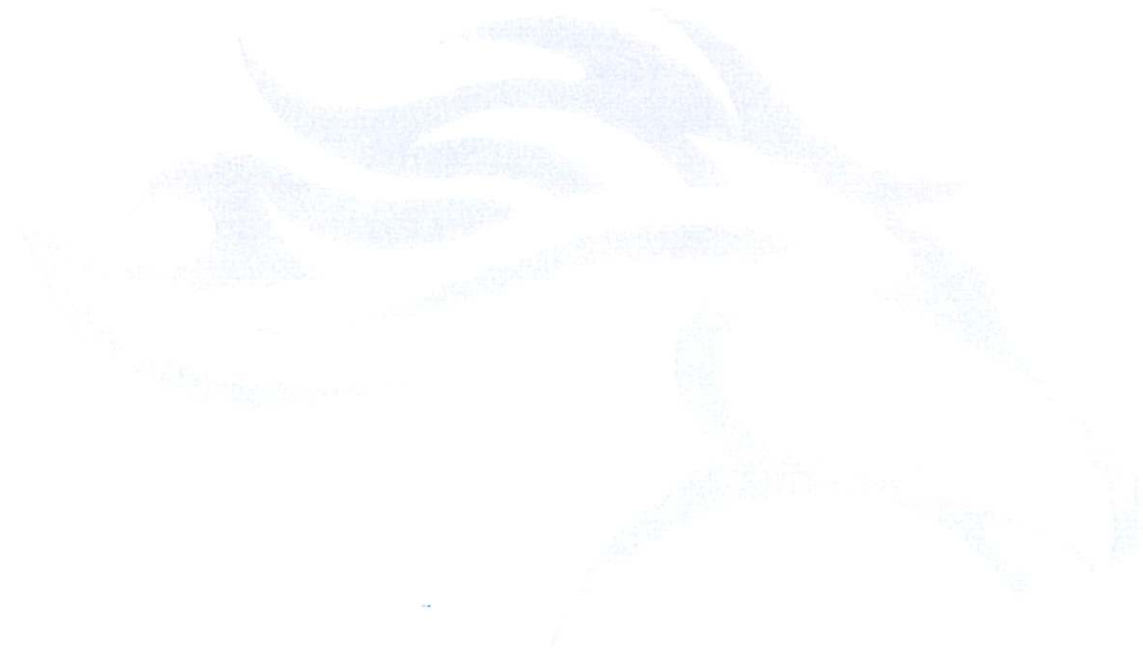




November 2009
MONTHLY
INVESTMENT INCOME REPORT



Commonwealth of Kentucky
Jonathan Miller, Secretary
FINANCE AND ADMINISTRATION CABINET



11/30/2009

**PORTFOLIO SUMMARY
POOLS**

	TYPE	MARKET VALUE	MARKET YIELD (%)	DURATION (Years)	PERCENT of TOTAL	STATUTORY LIMIT
Treasuries	Bills	0.00	0.00	0.00	0%	
	Treasury Notes	434,304,700.26	0.67	2.13	15%	
	Sub-total	434,304,700.26	0.67	2.13	15%	
Agencies	Notes	408,293,416.73	0.67	0.93	15%	
	Discounts	7,105,731.48	1.39	1.06	0%	
	Sub-total	415,399,148.21	0.69	0.93	15%	
Municipals		246,174,765.08	1.61	0.44	9%	
Corporates		120,283,299.53	2.17	1.55	4%	25%
Mortgages	Pools	35,978,722.31	2.11	0.64	1%	
	CMO's	250,528,434.17	1.85	0.07	9%	
	Sub-total	286,507,156.48	1.88	0.14	10%	25%
Asset Backs		96,370,499.25	1.25	0.70	3%	20%
Repurchase Agreements	Overnight	1,130,126,506.01	0.22	0.05	40%	
	< 30 days	19,746,762.81	0.04	0.04	1%	
	< 60 days	0.00	0.00	0.00	0%	
	< 90 days	0.00	0.00	0.00	0%	
	< 1 year	4,730,198.91	5.08	0.56	0%	
	< 2 years	114,999.15	2.46	1.19	0%	
	> 2 years	2,459,469.02	3.06	2.90	0%	
	Flex Repos	4,893,807.96	11.63	5.23	0%	
	Sub-total	1,162,071,743.86	0.29	0.08	41%	
Money Market Securities	Commercial Paper	0.00	0.00	0.00	0%	A1-P1
	Money Mkt Fund	80,000,000.00	0.08	0.00	3%	
	Certificates of Deposit	10,252,901.78	1.86	0.76	0%	
	Sub-total	90,252,901.78	0.28	0.09	3%	20%
Derivatives	Swaps	0.00	0.00	0.00	0%	
	OTC Options	0.00	0.00	0.00	0%	
	Sub-total	0.00	0.00	0.00	0%	
TOTALS		2,851,364,214.45	0.79	0.64	100%	

11/30/2009

**PORTFOLIO SUMMARY
SHORT TERM POOL**

	TYPE	MARKET VALUE	MARKET IELD (%)	DURATION (Years)	PERCENT of TOTAL
Treasuries					
	Bills	0.00	0.00	0.00	0%
	Treasury Notes	0.00	0.00	0.00	0%
	Sub-total	0.00	0.00	0.00	0%
Agencies					
	Notes	0.00	0.00	0.00	0%
	Discounts	0.00	0.00	0.00	0%
	Sub-total	0.00	0.00	0.00	0%
Corporates		0.00	0.00	0.00	0%
Municipals		0.00	0.00	0.00	0%
Mortgages	CMOs	79,626,272.44	0.49	0.39	34%
ABS		78,277,074.17	0.52	0.74	33%
Repurchase Agreements					
	Overnight	78,277,074.17	0.52	0.74	33%
	< 30 days	0.00	0.00	0.00	0%
	< 60 days	0.00	0.00	0.00	0%
	< 90 days	0.00	0.00	0.00	0%
	< 1 year	0.00	0.00	0.00	0%
	< 2 years	0.00	0.00	0.00	0%
	> 2 years	0.00	0.00	0.00	0%
	Flex Repos	0.00	0.00	0.00	0%
	Sub-total	78,277,074.17	0.52	0.74	33%
Money Market Securities					
	Commercial Paper	0.00	0.00	0.00	0%
	Money Mkt Fund	0.00	0.00	0.00	0%
	Certificates of Deposit	0.00	0.00	0.00	0%
	Sub-total	0.00	0.00	0.00	0%
TOTALS		236,180,420.78	0.51	0.62	100%

11/30/2009

**PORTFOLIO SUMMARY
INTERMEDIATE TERM POOL**

	TYPE	MARKET VALUE	MARKET IELD (%)	DURATION (Years)	PERCENT of TOTAL
Treasuries					
	Bills	0.00	0.00	0.00	0%
	Treasury Notes	256,918,613.41	0.67	2.30	14%
	Sub-total	256,918,613.41	0.67	2.30	14%
Agencies					
	Notes	223,264,691.94	0.71	0.87	12%
	Discounts	7,105,731.48	1.39	1.06	0%
	Sub-total	230,370,423.42	0.73	0.87	12%
Municipals		246,174,765.08	1.61	0.44	13%
Corporates		120,283,299.53	2.17	1.55	6%
Mortgages					
	Pools	35,978,722.31	2.11	0.64	2%
	CMO's	170,902,161.73	2.48	-0.08	9%
	Sub-total	206,880,884.04	2.41	0.04	11%
Asset Backs		18,093,425.08	4.39	0.54	1%
Repurchase Agreements					
	Overnight	679,703,734.17	0.20	0.00	37%
	< 30 days	19,746,762.81	0.04	0.04	1%
	< 60 days	0.00	0.00	0.00	0%
	< 90 days	0.00	0.00	0.00	0%
	< 1 year	4,730,198.91	5.08	0.56	0%
	< 2 years	114,999.15	2.46	1.19	0%
	> 2 years	2,459,469.02	3.06	2.90	0%
	Flex Repos	4,893,807.96	11.63	5.23	0%
	Sub-total	711,648,972.02	0.32	0.05	38%
Money Market Securities					
	Commercial Paper	0.00	0.00	0.00	0%
	Money Mkt Fund	80,000,000.00	0.08	0.00	4%
	Certificates of Deposit	10,252,901.78	1.86	0.76	1%
	Sub-total	90,252,901.78	0.28	0.09	5%
Derivatives					
	Swaps	0.00	0.00	0.00	0%
	OTC Options	0.00	0.00	0.00	0%
	Sub-total	0.00	0.00	0.00	0%
TOTALS		1,880,623,284.36	0.97	0.61	100%

11/30/2009

**PORTFOLIO SUMMARY
BOND PROCEEDS POOL**

	TYPE	MARKET VALUE	MARKET YIELD (%)	DURATION (Years)	PERCENT of TOTAL
Treasuries					
	Bills	0.00	0.00	0.00	0%
	Treasury Notes	177,386,086.85	0.67	1.88	24%
	Sub-total	177,386,086.85	0.67	1.88	24%
Agencies					
	Notes	185,028,724.79	0.63	1.00	25%
	Discounts	0.00	0.00	0.00	0%
	Sub-total	185,028,724.79	0.63	1.00	25%
Municipals		0.00	0.00	0.00	0%
Mortgages					
	Pools	0.00	0.00	0.00	0%
	CMO's	0.00	0.00	0.00	0%
	Sub-total	0.00	0.00	0.00	0%
Asset Backs		0.00	0.00	0.00	0%
Repurchase Agreements					
	Overnight	372,145,697.67	0.20	0.00	51%
	< 30 days	0.00	0.00	0.00	0%
	< 60 days	0.00	0.00	0.00	0%
	< 90 days	0.00	0.00	0.00	0%
	< 1 year	0.00	0.00	0.00	0%
	< 2 years	0.00	0.00	0.00	0%
	> 2 years	0.00	0.00	0.00	0%
	Flex Repos	0.00	0.00	0.00	0%
	Sub-total	372,145,697.67	0.20	0.00	51%
Money Market Securities					
	Commercial Paper	0.00	0.00	0.00	0%
	Money Mkt Fund	0.00	0.00	0.00	0%
	Certificates of Deposit	0.00	0.00	0.00	0%
	Sub-total	0.00	0.00	0.00	0%
TOTALS		734,560,509.31	0.42	0.71	100%

ACCRUED EARNINGS

November 2009

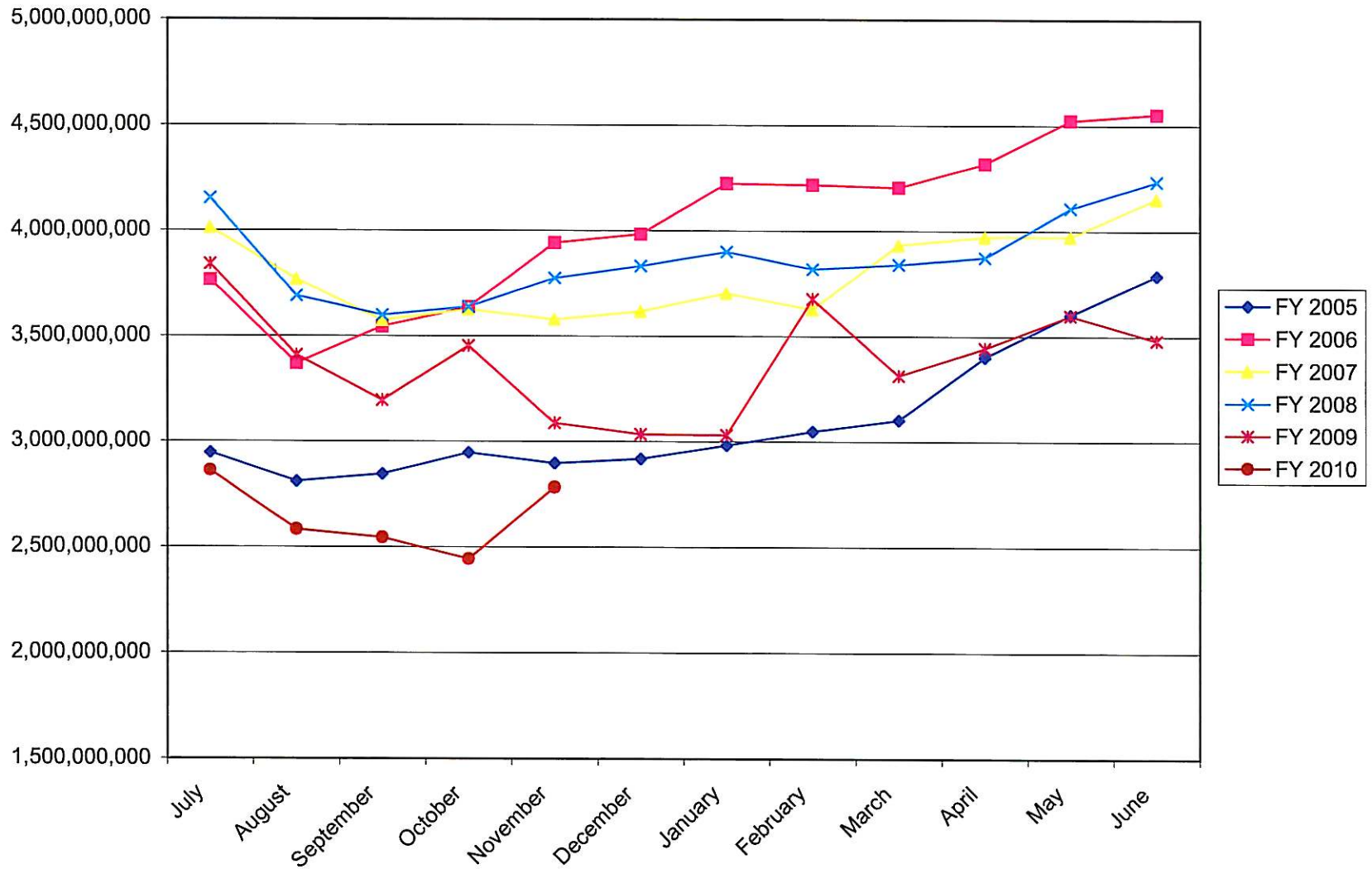
		<u>Month</u>			<u>YTD</u>	
	Actual		Budget	Actual		Budget
General Fund	-2,280,497		0	-650,389		0
Capital Con.	712,047		541,667	4,392,443		2,735,417
Transportation	643,744		308,333	3,315,341		1,541,665
Agency	1,113,598		770,833	3,832,391		3,795,832
T&R	218,560		145,833	890,274		674,999

CASH DISTRIBUTION

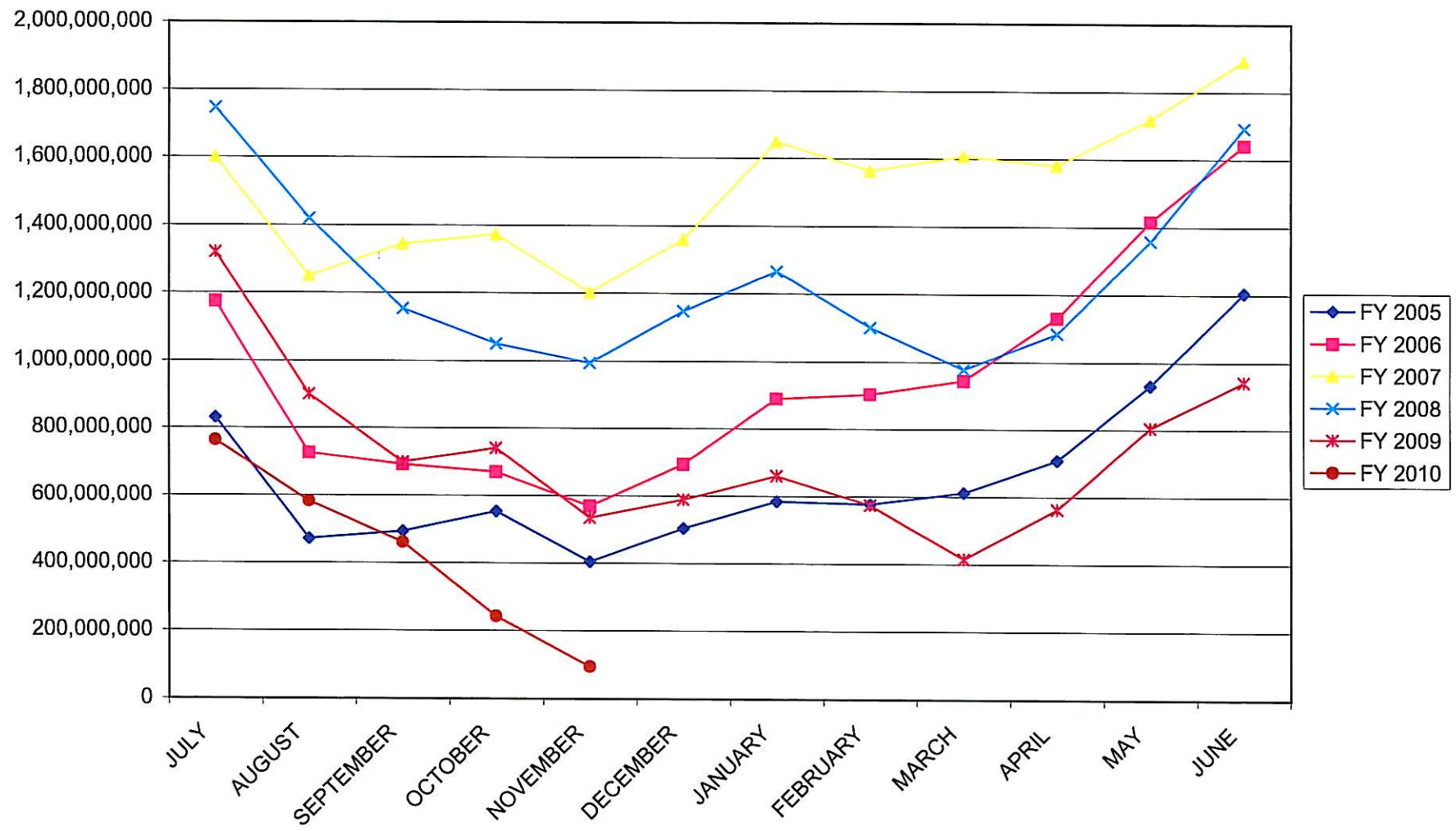
November 2009

	<u>Actual</u>	<u>Month</u>	<u>Budget</u>	<u>Actual</u>	<u>YTD</u>	<u>Budget</u>
General Fund	0		0	0		0
Capital Con.	407,159		541,667	2,482,926		2,735,417
Transportation	290,376		308,333	2,335,512		1,541,665
Agency	1,043,555		770,833	5,288,350		3,795,832
T&R	164,843		145,833	919,679		674,999

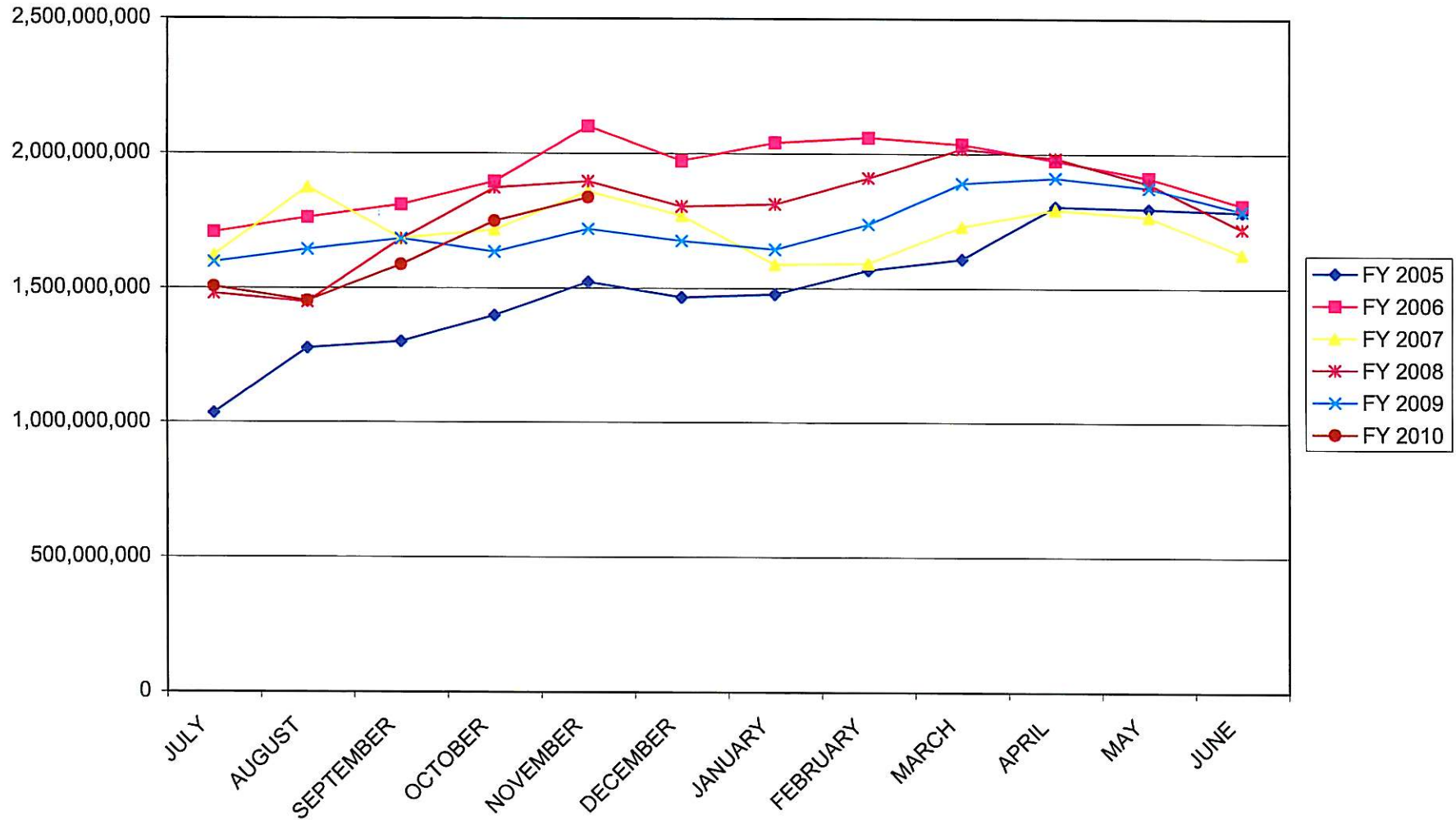
INVESTABLE BALANCES



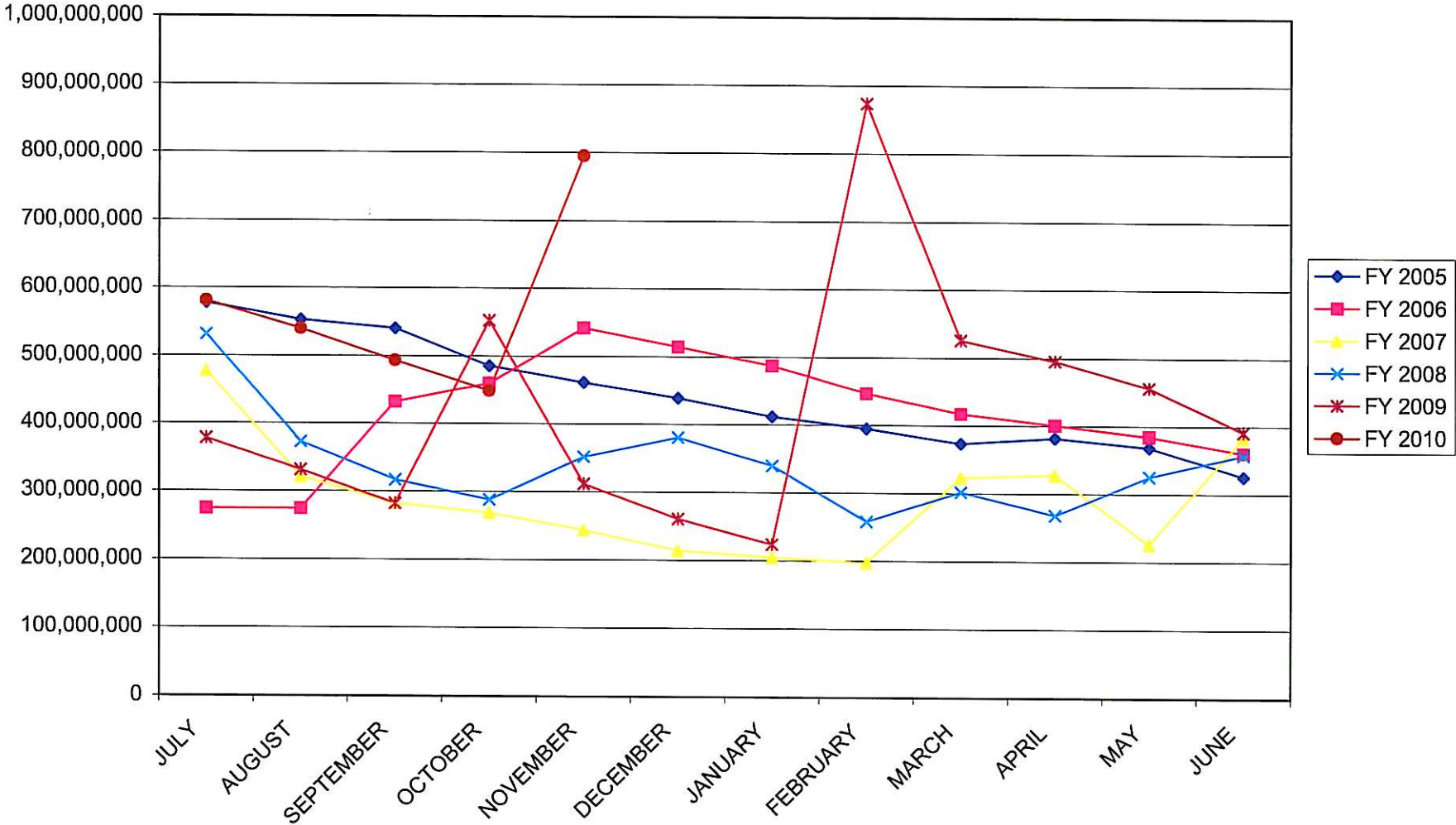
SHORT TERM POOL INVESTABLE BALANCES



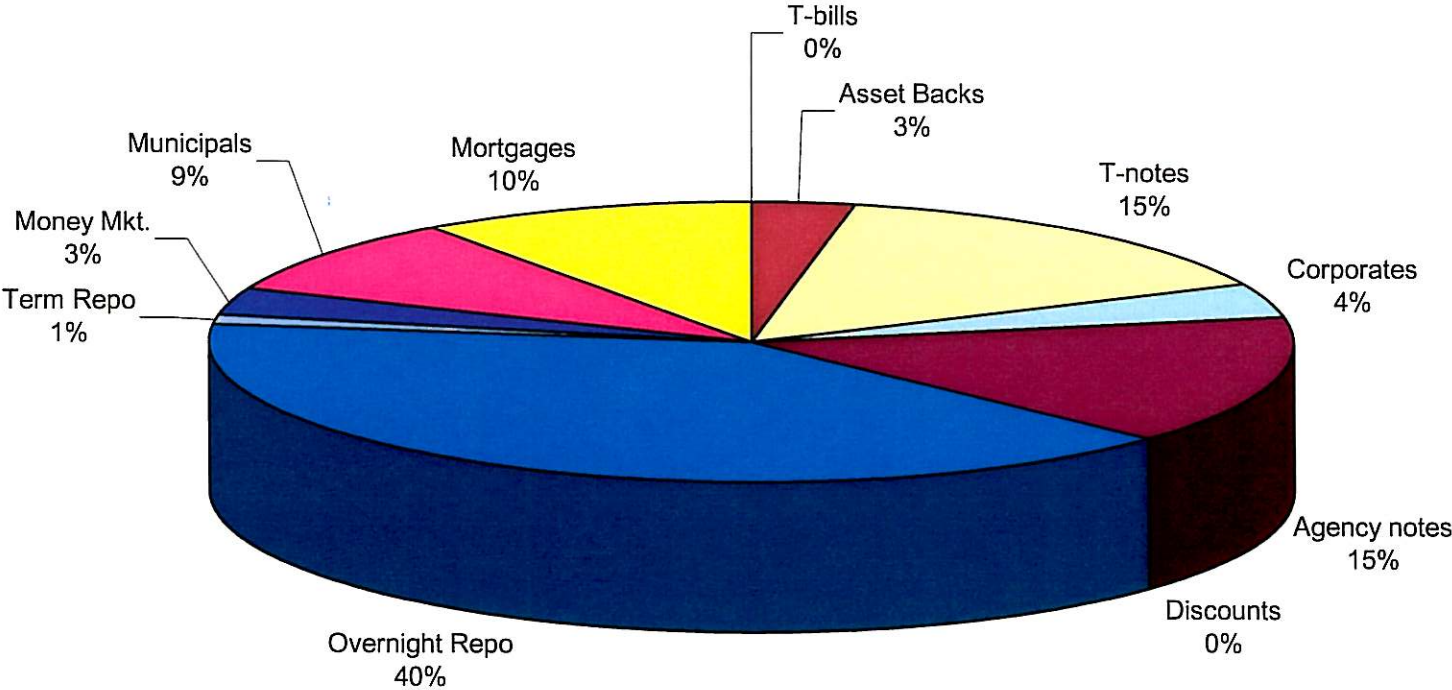
INTERMEDIATE POOL INVESTABLE BALANCES



BOND PROCEEDS INVESTABLE BALANCES

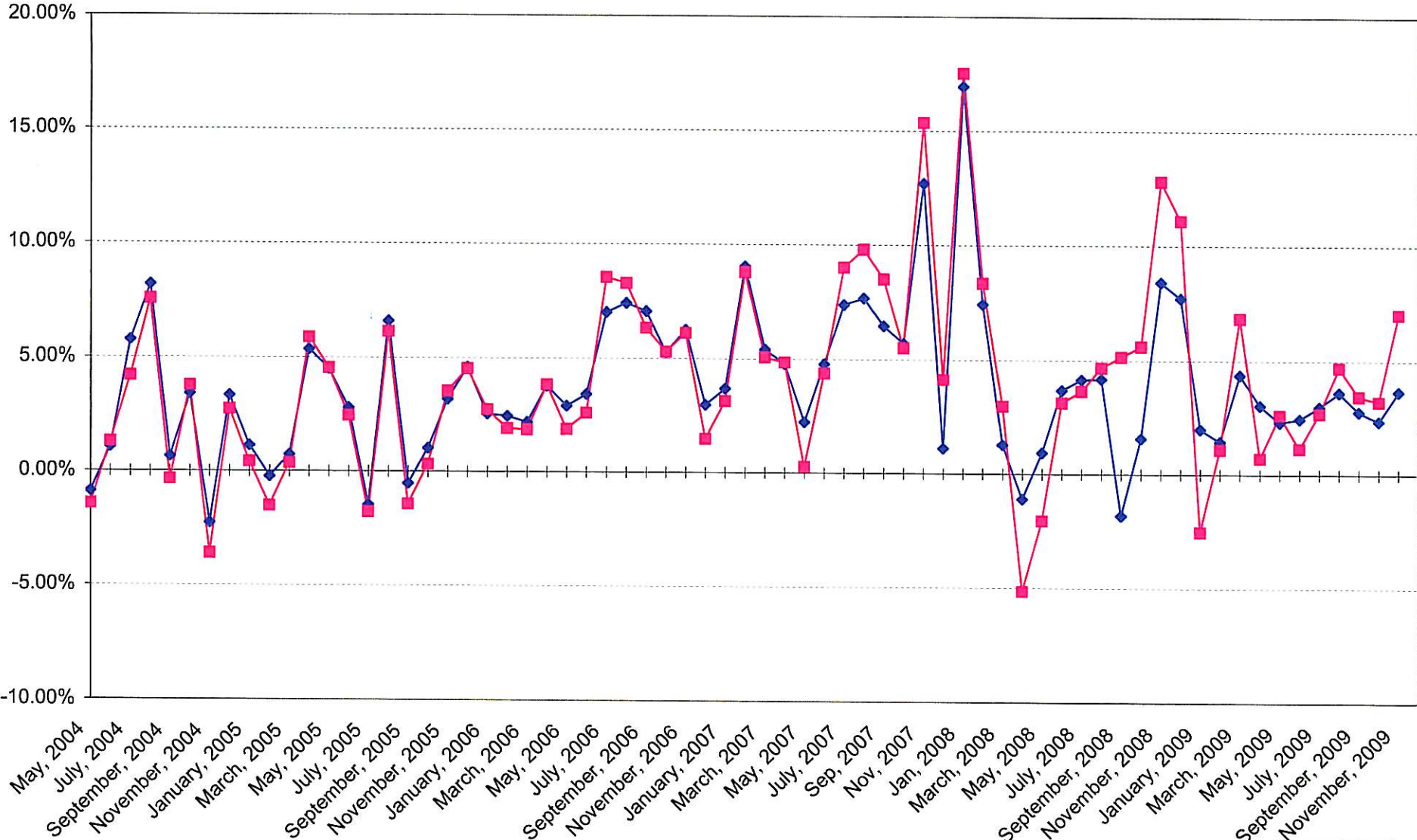


Distribution of Investments for November

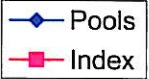


LIMITS
Corporates 25%
Mortgages 25%
Asset Backs 20%
Money Mkt. 20%

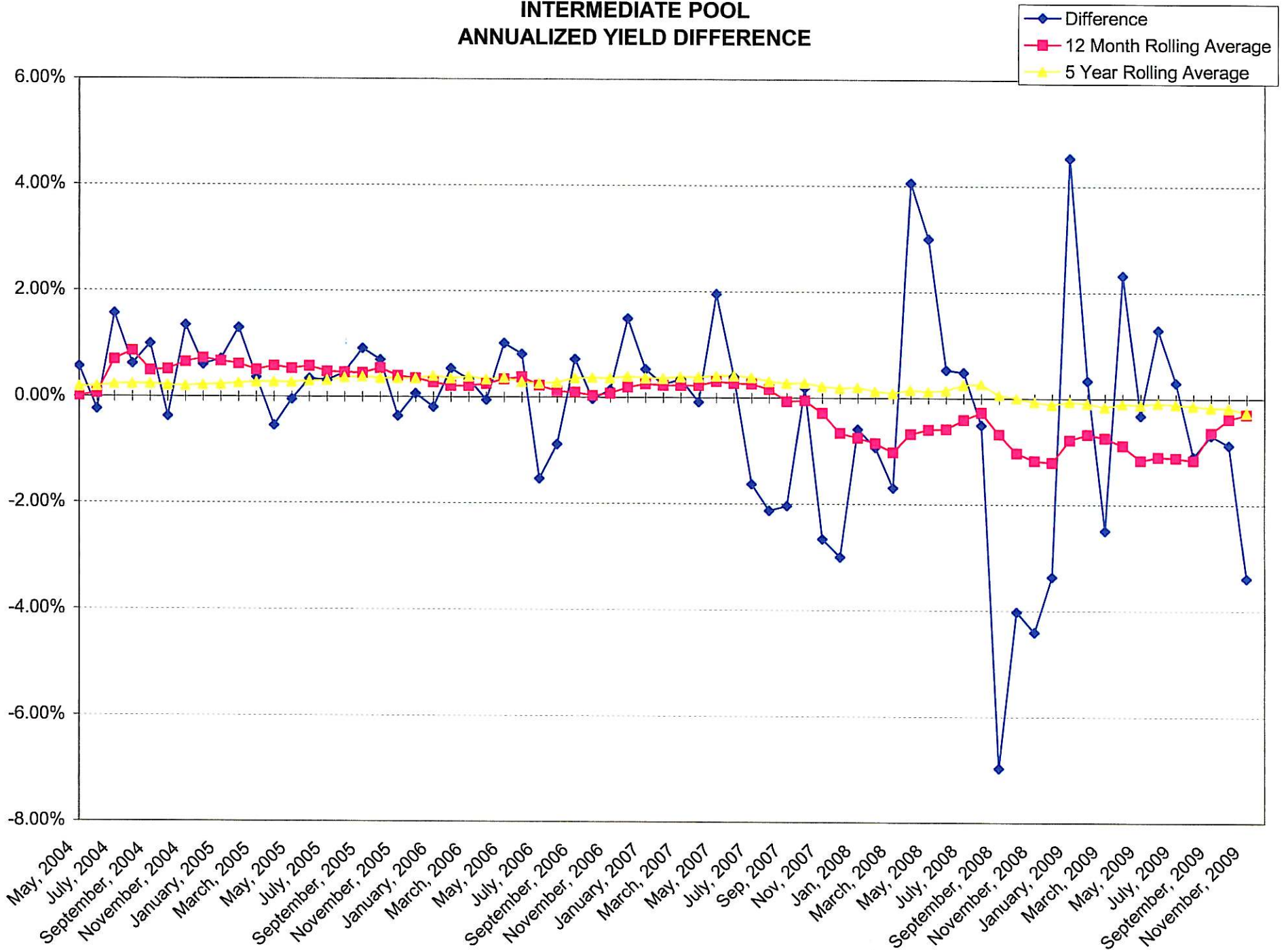
INTERMEDIATE POOL ANNUALIZED YIELD



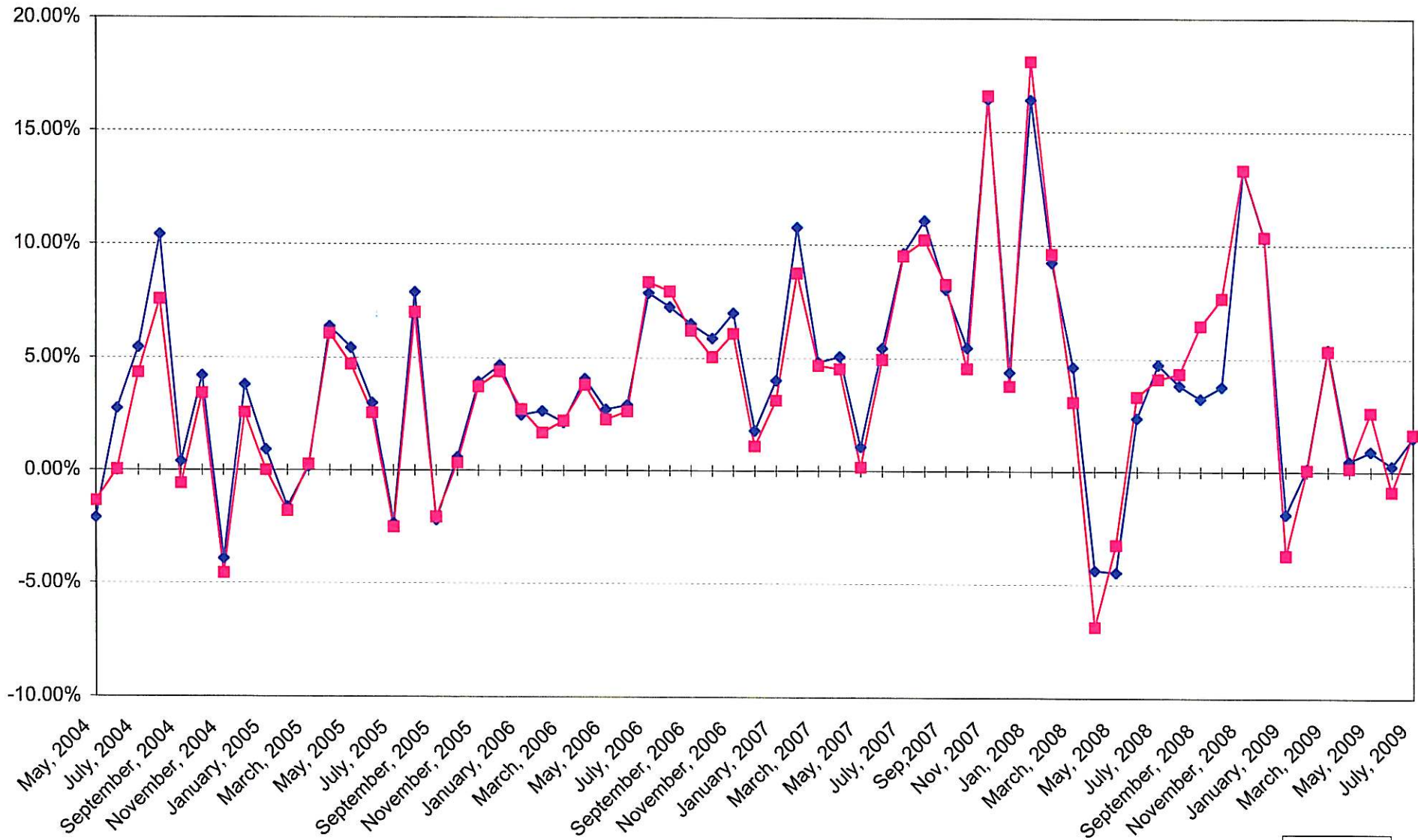
Index consists of 70% Government 1-3 year, 15% Mortgage 0-3 and 15% money market



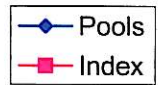
INTERMEDIATE POOL ANNUALIZED YIELD DIFFERENCE



BOND PROCEEDS POOL ANNUALIZED YIELD



Index consists of 85% Government 1-3 year and 15% money market



BOND PROCEEDS POOL ANNUALIZED YIELD DIFFERENCE

