



October 2009  
**MONTHLY**  
**INVESTMENT INCOME REPORT**



Commonwealth of Kentucky  
Jonathan Miller, Secretary  
FINANCE AND ADMINISTRATION CABINET



10/31/2009

**PORTFOLIO SUMMARY  
POOLS**

	TYPE	MARKET VALUE	MARKET IELD (%)	DURATION (Years)	PERCENT of TOTAL	STATUTORY LIMIT
Treasuries						
	Bills	0.00	0.00	0.00	0%	
	Treasury Notes	429,285,214.88	0.88	2.06	17%	
	Sub-total	429,285,214.88	0.88	2.06	17%	
Agencies						
	Notes	470,298,586.93	0.77	0.69	18%	
	Discounts	7,060,918.86	3.32	1.13	0%	
	Sub-total	477,359,505.79	0.81	0.70	18%	
Municipals						
		270,398,476.45	1.50	0.41	11%	
Corporates						
		124,203,233.00	2.26	1.56	5%	25%
Mortgages						
	Pools	36,871,013.15	2.31	0.62	2%	
	CMO's	259,491,251.61	12.38	1.24	10%	
	Sub-total	296,362,264.76	11.12	1.16	12%	25%
Asset Backs						
		100,149,240.75	16.65	5.03	4%	20%
Repurchase Agreements						
	Overnight	807,999,999.90	0.20	0.00	32%	
	< 30 days	9,800,646.94	0.10	0.05	0%	
	< 60 days	9,945,942.40	0.00	0.00	0%	
	< 90 days	0.00	0.00	0.00	0%	
	< 1 year	4,711,116.82	5.08	0.64	0%	
	< 2 years	115,178.76	2.46	1.26	0%	
	> 2 years	2,566,408.64	3.10	3.00	0%	
	Flex Repos	6,853,055.37	11.63	5.38	0%	
	Sub-total	841,992,348.83	0.33	0.06	32%	
Money Market Securities						
	Commercial Paper	0.00	0.00	0.00	0%	A1-P1
	Money Mkt Fund	16,000,000.00	0.10	0.00	1%	
	Certificates of Deposit	10,243,234.27	1.86	0.60	0%	
	Sub-total	26,243,234.27	0.79	0.23	1%	20%
Derivatives						
	Swaps	0.00	0.00	0.00	0%	
	OTC Options	0.00	0.00	0.00	0%	
	Sub-total	0.00	0.00	0.00	0%	
<b>TOTALS</b>						
		2,565,993,518.73	2.61	0.95	100%	

10/31/2009

**PORTFOLIO SUMMARY  
SHORT TERM POOL**

	TYPE	MARKET VALUE	MARKET IELD (%)	DURATION (Years)	PERCENT of TOTAL
Treasuries					
	Bills	0.00	0.00	0.00	0%
	Treasury Notes	0.00	0.00	0.00	0%
	Sub-total	0.00	0.00	0.00	0%
Agencies					
	Notes	0.00	0.00	0.00	0%
	Discounts	0.00	0.00	0.00	0%
	Sub-total	0.00	0.00	0.00	0%
Corporates		0.00	0.00	0.00	0%
Municipals		0.00	0.00	0.00	0%
Mortgages	CMOs	80,559,023.00	33.29	3.82	22%
ABS		79,189,242.85	20.02	6.23	22%
Repurchase Agreements					
	Overnight	199,221,751.21	0.20	0.00	56%
	< 30 days	0.00	0.00	0.00	0%
	< 60 days	0.00	0.00	0.00	0%
	< 90 days	0.00	0.00	0.00	0%
	< 1 year	0.00	0.00	0.00	0%
	< 2 years	0.00	0.00	0.00	0%
	> 2 years	0.00	0.00	0.00	0%
	Flex Repos	0.00	0.00	0.00	0%
	Sub-total	199,221,751.21	0.20	0.00	56%
Money Market Securities					
	Commercial Paper	0.00	0.00	0.00	0%
	Money Mkt Fund	0.00	0.00	0.00	0%
	Certificates of Deposit	0.00	0.00	0.00	0%
	Sub-total	0.00	0.00	0.00	0%
<b>TOTALS</b>		<b>358,970,017.06</b>	<b>12.00</b>	<b>2.23</b>	<b>100%</b>

10/31/2009

**PORTFOLIO SUMMARY  
INTERMEDIATE TERM POOL**

	TYPE	MARKET VALUE	MARKET YIELD (%)	DURATION (Years)	PERCENT of TOTAL
Treasuries					
	Bills	0.00	0.00	0.00	0%
	Treasury Notes	282,651,694.64	0.90	2.17	16%
	Sub-total	282,651,694.64	0.90	2.17	16%
Agencies					
	Notes	253,322,156.26	0.76	0.63	14%
	Discounts	7,060,918.86	3.32	1.13	0%
	Sub-total	260,383,075.12	0.83	0.64	14%
Municipals		270,398,476.45	1.50	0.41	15%
Corporates		124,203,233.00	2.26	1.56	7%
Mortgages					
	Pools	36,871,013.15	2.31	0.62	2%
	CMO's	178,932,228.61	2.96	0.08	10%
	Sub-total	215,803,241.76	2.85	0.17	12%
Asset Backs		20,959,997.90	3.91	0.51	1%
Repurchase Agreements					
	Overnight	558,163,474.10	0.20	0.00	31%
	< 30 days	9,800,646.94	0.10	0.05	1%
	< 60 days	9,945,942.40	0.06	0.09	1%
	< 90 days	0.00	0.00	0.00	0%
	< 1 year	4,711,116.82	5.08	0.64	0%
	< 2 years	115,178.76	2.46	1.26	0%
	> 2 years	2,566,408.64	3.10	3.00	0%
	Flex Repos	6,853,055.37	11.63	5.38	0%
	Sub-total	592,155,823.03	0.38	0.08	33%
Money Market Securities					
	Commercial Paper	0.00	0.00	0.00	0%
	Money Mkt Fund	16,000,000.00	0.10	0.00	1%
	Certificates of Deposit	10,243,234.27	1.86	0.60	1%
	Sub-total	26,243,234.27	0.79	0.23	1%
Derivatives					
	Swaps	0.00	0.00	0.00	0%
	OTC Options	0.00	0.00	0.00	0%
	Sub-total	0.00	0.00	0.00	0%
<b>TOTALS</b>		<b>1,792,798,776.17</b>	<b>1.17</b>	<b>0.66</b>	<b>100%</b>

10/31/2009

**PORTFOLIO SUMMARY  
BOND PROCEEDS POOL**

	<b>TYPE</b>	<b>MARKET VALUE</b>	<b>MARKET YIELD (%)</b>	<b>DURATION (Years)</b>	<b>PERCENT of TOTAL</b>
Treasuries					
	Bills	0.00	0.00	0.00	0%
	Treasury Notes	146,633,520.24	0.84	1.85	36%
	Sub-total	146,633,520.24	0.84	1.85	36%
Agencies					
	Notes	216,976,430.67	0.77	0.77	52%
	Discounts	0.00	0.00	0.00	0%
	Sub-total	216,976,430.67	0.77	0.77	52%
Municipals		0.00	0.00	0.00	0%
Mortgages					
	Pools	0.00	0.00	0.00	0%
	CMO's	0.00	0.00	0.00	0%
	Sub-total	0.00	0.00	0.00	0%
Asset Backs		0.00	0.00	0.00	0%
Repurchase Agreements					
	Overnight	50,614,774.59	0.20	0.00	12%
	< 30 days	0.00	0.00	0.00	0%
	< 60 days	0.00	0.00	0.00	0%
	< 90 days	0.00	0.00	0.00	0%
	< 1 year	0.00	0.00	0.00	0%
	< 2 years	0.00	0.00	0.00	0%
	> 2 years	0.00	0.00	0.00	0%
	Flex Repos	0.00	0.00	0.00	0%
	Sub-total	50,614,774.59	0.20	0.00	12%
Money Market Securities					
	Commercial Paper	0.00	0.00	0.00	0%
	Money Mkt Fund	0.00	0.00	0.00	0%
	Certificates of Deposit	0.00	0.00	0.00	0%
	Sub-total	0.00	0.00	0.00	0%
<b>TOTALS</b>		<b>414,224,725.50</b>	<b>0.72</b>	<b>1.06</b>	<b>100%</b>

## ACCRUED EARNINGS

October 2009

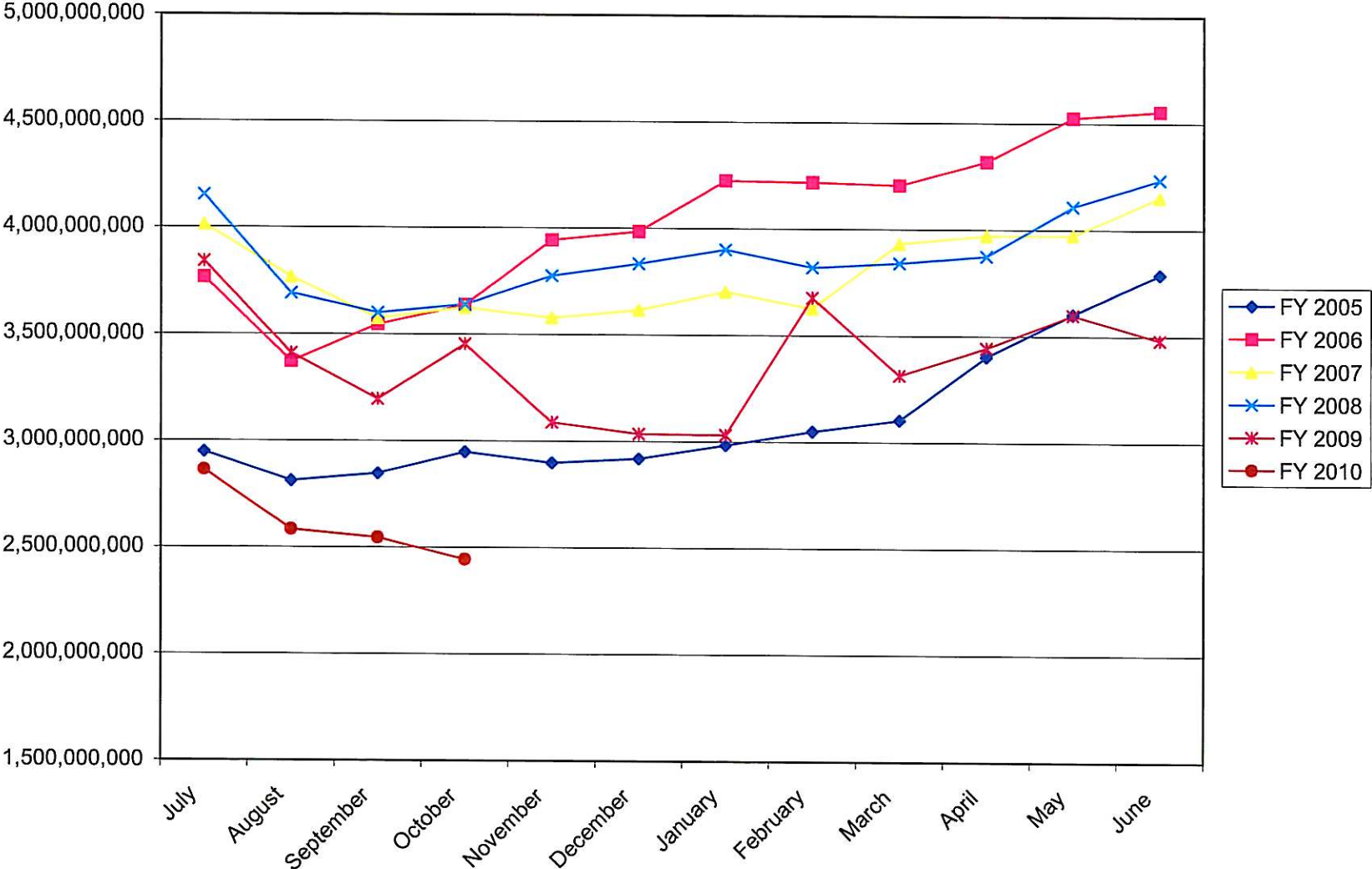
		<u>Month</u>			<u>YTD</u>	
	Actual		Budget	Actual		Budget
General Fund	1,383,786		0	1,630,108		0
Capital Con.	2,223,831		562,500	3,680,396		2,193,750
Transportation	467,928		308,333	2,671,597		1,233,332
Agency	664,823		770,833	2,718,793		3,024,999
T&R	120,549		145,833	671,714		529,166

## CASH DISTRIBUTION

October 2009

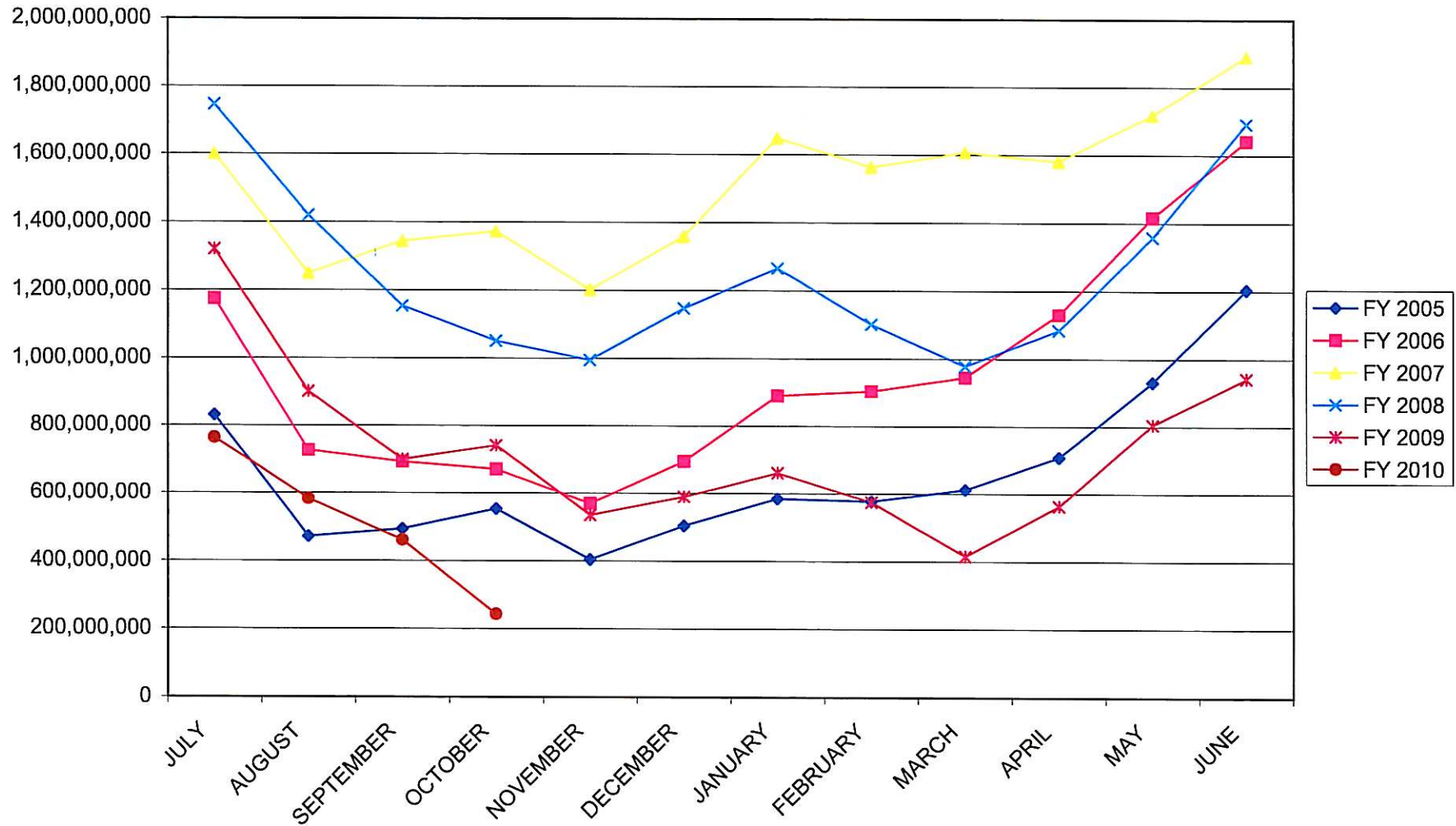
		<u>Month</u>			<u>YTD</u>	
	Actual		Budget	Actual		Budget
General Fund	0		0	0		0
Capital Con.	500,470		562,500	2,075,767		2,193,750
Transportation	377,121		308,333	2,045,136		1,233,332
Agency	1,168,941		770,833	4,244,795		3,024,999
T&R	189,574		145,833	754,836		529,166

### INVESTABLE BALANCES

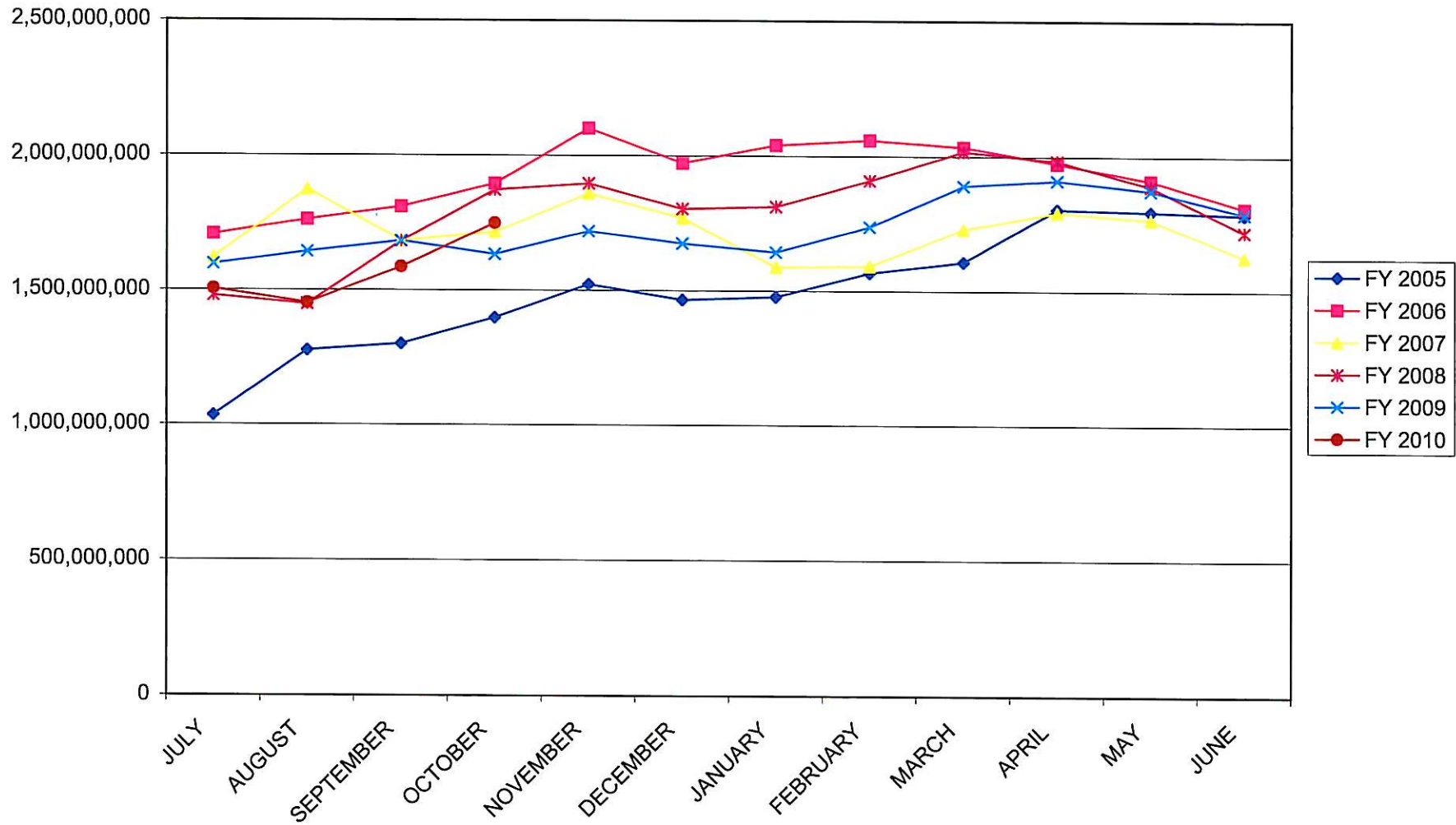




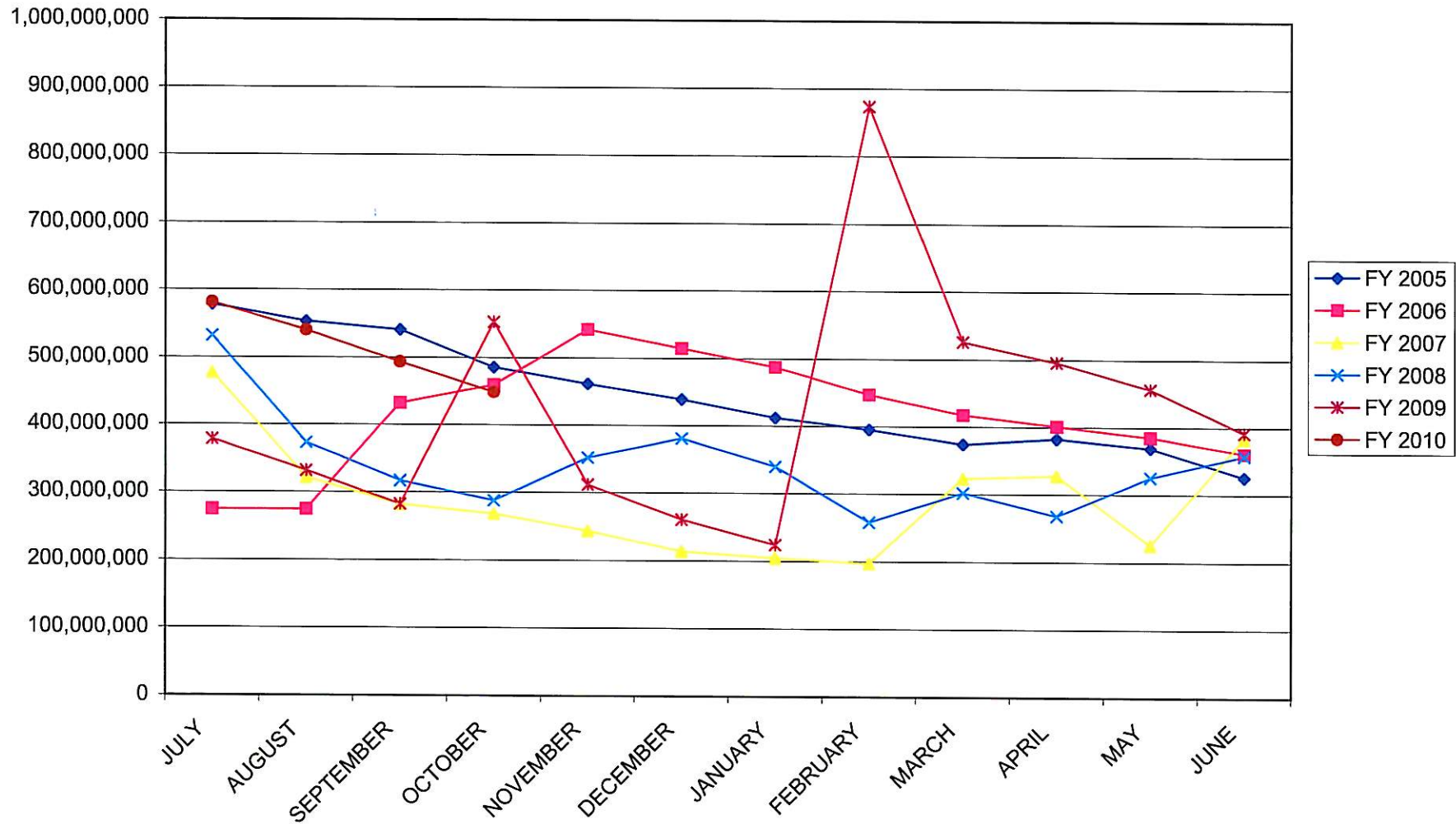
## SHORT TERM POOL INVESTABLE BALANCES



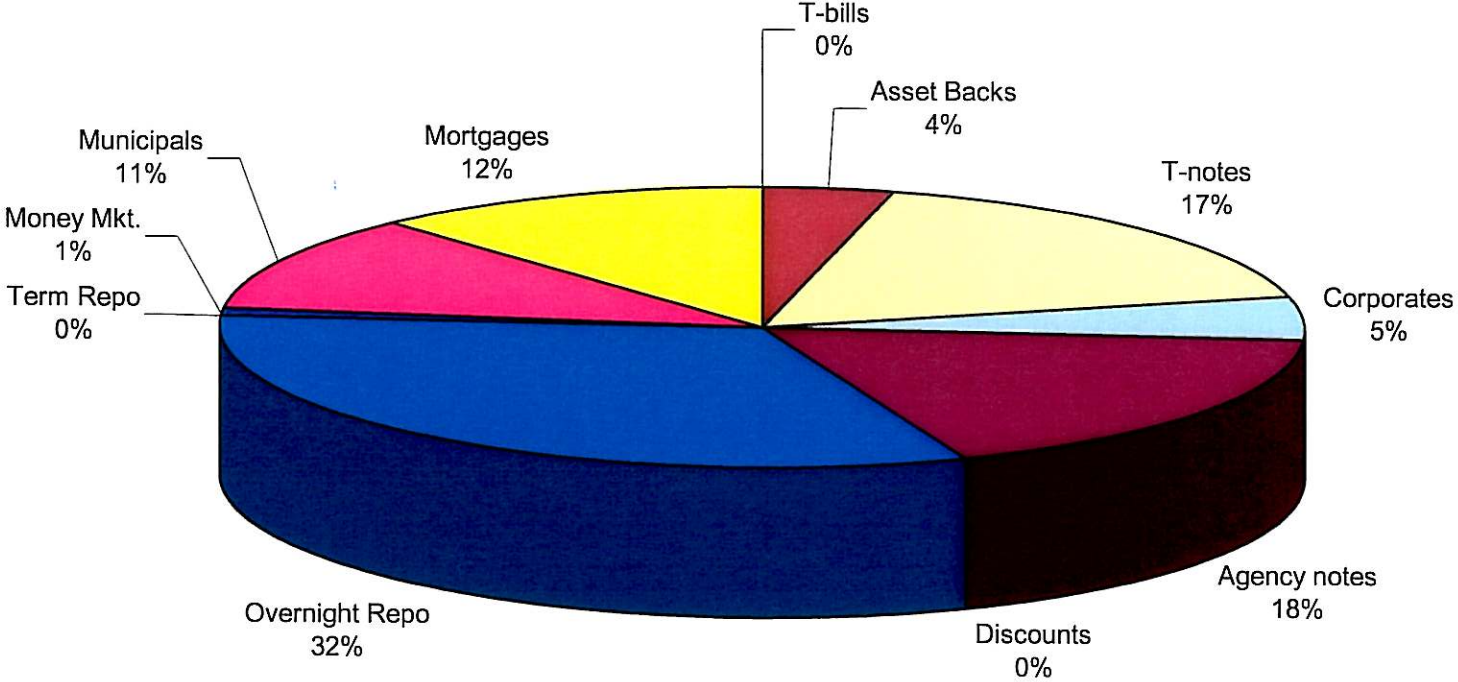
## INTERMEDIATE POOL INVESTABLE BALANCES



## BOND PROCEEDS INVESTABLE BALANCES

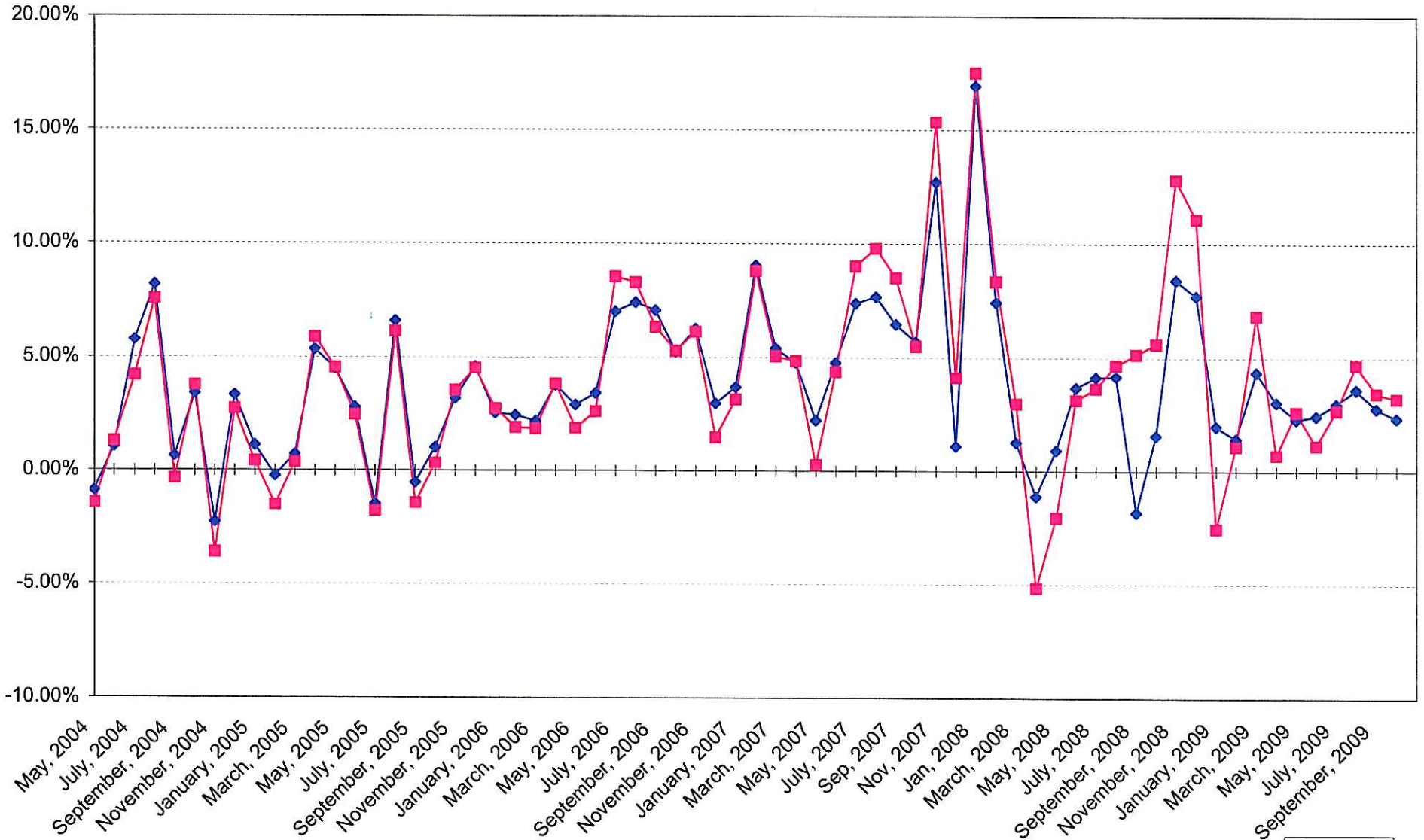


### Distribution of Investments for October



LIMITS  
Corporates 25%  
Mortgages 25%  
Asset Backs 20%  
Money Mkt. 20%

## INTERMEDIATE POOL ANNUALIZED YIELD

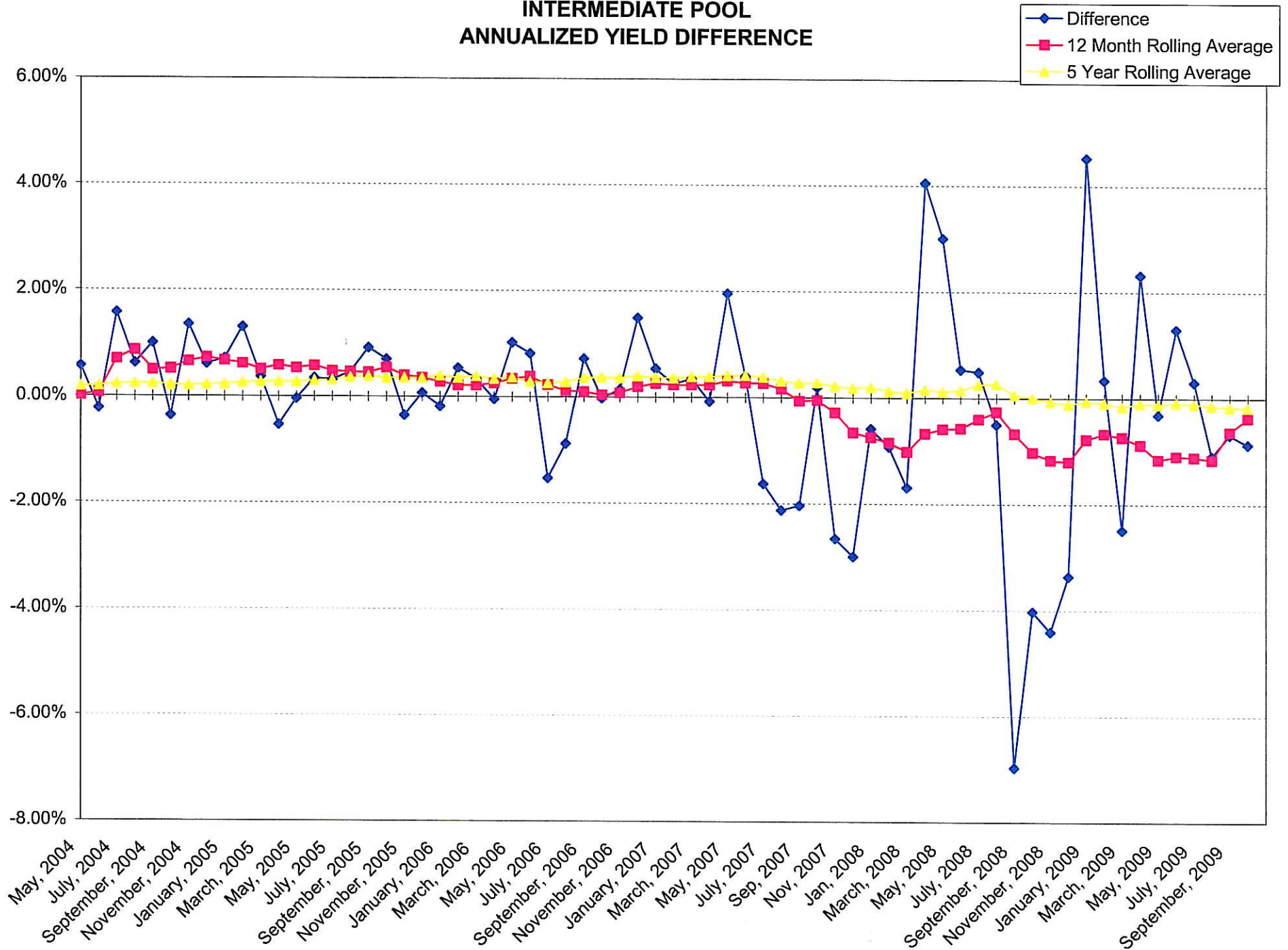


Index consists of 70% Government 1-3 year, 15% Mortgage 0-3 and 15% money market

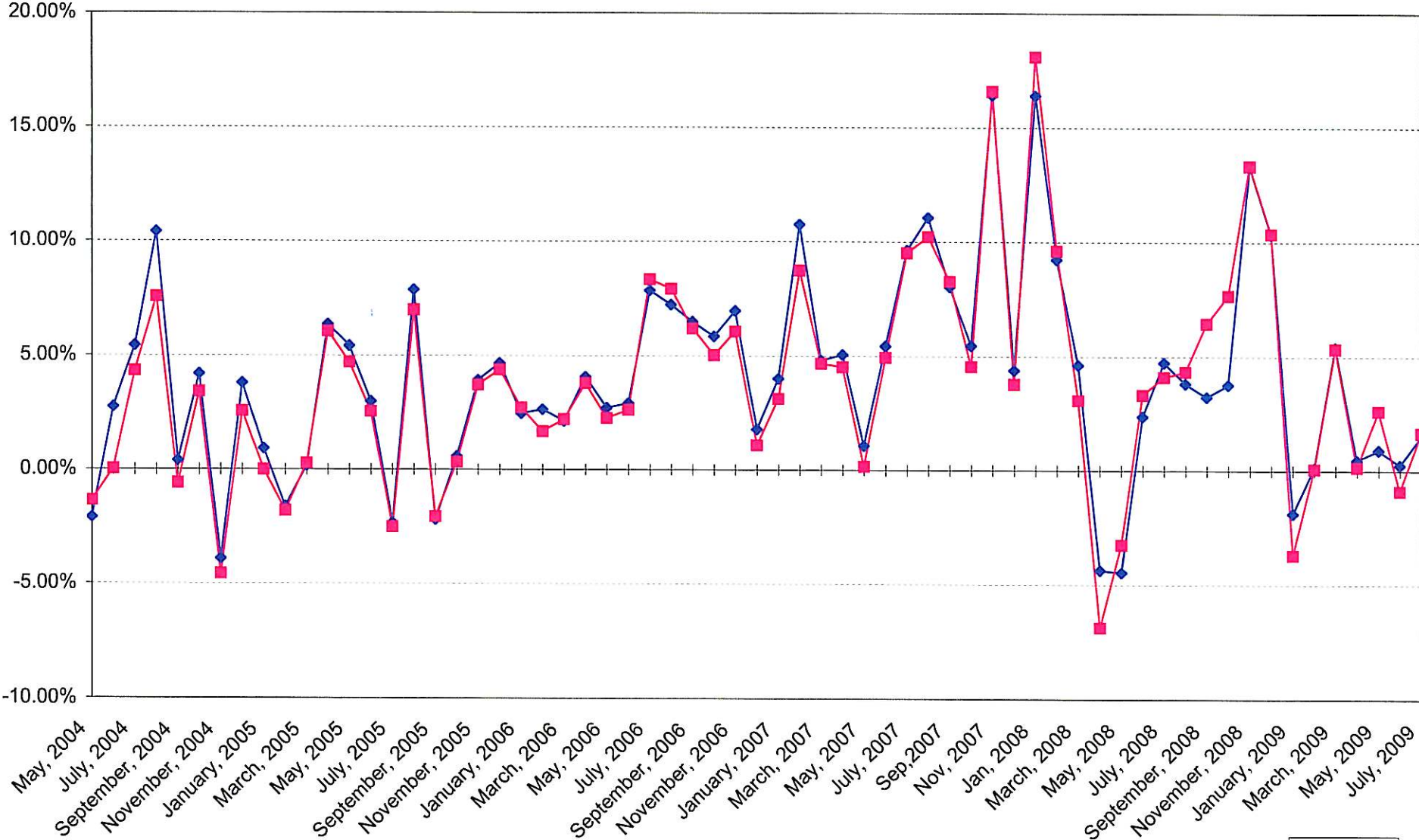




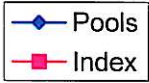
# INTERMEDIATE POOL ANNUALIZED YIELD DIFFERENCE



## BOND PROCEEDS POOL ANNUALIZED YIELD



Index consists of 85% Government 1-3 year and 15% money market



# BOND PROCEEDS POOL ANNUALIZED YIELD DIFFERENCE

