



August 2020
MONTHLY
INVESTMENT INCOME REPORT



Commonwealth of Kentucky
Holly M. Johnson, Secretary
FINANCE AND ADMINISTRATION CABINET



8/31/2020

**PORTFOLIO SUMMARY
POOLS**

	TYPE	MARKET VALUE	MARKET YIELD (%)	DURATION (Years)	PERCENT of TOTAL
Government					
	Bills	674,961,839.00	0.09	0.07	12.4%
	Treasury Notes	1,309,739,852.07	0.15	1.24	24.0%
	Sovereign	0.00	0.00	0.00	0.0%
	Sub-total	1,984,701,691.07	0.13	0.84	36.3%
Agencies					
	Notes	191,793,286.11	0.33	0.29	3.5%
	Discounts	649,971,265.00	0.08	0.05	11.9%
	Sub-total	841,764,551.11	0.14	0.11	15.4%
Municipals					
		0.00	0.00	0.00	0.0%
Corporates					
		66,400,379.45	0.24	1.14	1.2%
Mortgages					
	Pools	46,714,147.79	1.10	0.68	0.9%
	CMO's	101,884,428.00	0.90	0.92	1.9%
	Sub-total	148,598,575.79	0.96	0.84	2.7%
Asset Backed Securities					
		194,735,776.75	0.47	1.22	3.6%
Repurchase Agreements					
	Overnight	399,998,028.25	0.08	0.00	7.3%
	< 30 days	0.00	0.00	0.00	0.0%
	< 60 days	0.00	0.00	0.00	0.0%
	< 90 days	0.00	0.00	0.00	0.0%
	< 1 year	0.00	0.00	0.00	0.0%
	Flex Repos	0.00	0.00	0.00	0.0%
	Sub-total	399,998,028.25	0.08	0.00	7.3%
Money Market Securities					
	Commercial Paper	0.00	0.00	0.00	0.0%
	Money Mkt Fund	1,824,000,000.00	0.05	0.12	33.4%
	Certificates of Deposit	0.00	0.00	0.00	0.0%
	Sub-total	1,824,000,000.00	0.05	0.12	33.4%
Derivatives					
	Swaps	0.00	0.00	0.00	0.0%
	OTC Options	0.00	0.00	0.00	0.0%
	Sub-total	0.00	0.00	0.00	0.0%
TOTALS					
		5,460,199,002.42	0.14	0.44	100.0%

8/31/2020

**PORTFOLIO SUMMARY
INTERMEDIATE TERM POOL**

	TYPE	MARKET VALUE	MARKET YIELD (%)	DURATION (Years)	PERCENT of TOTAL
Government					
	Bills	0.00	0.00	0.00	0.0%
	Treasury Notes	1,309,739,852.07	0.15	1.24	51.4%
	Sovereign	0.00	0.00	0.00	0.0%
	Sub-total	1,309,739,852.07	0.15	1.24	51.4%
Agencies					
	Notes	191,793,286.11	0.33	0.29	7.5%
	Discounts	49,994,500.00	0.09	0.12	2.0%
	Sub-total	241,787,786.11	0.28	0.26	9.5%
Municipals		0.00	0.00	0.00	0.0%
Corporates		66,400,379.45	0.24	1.14	2.6%
Mortgages					
	Pools	46,714,147.79	1.10	0.68	1.8%
	CMO's	101,884,428.00	0.90	0.92	4.0%
	Sub-total	148,598,575.79	0.96	0.84	5.8%
Asset Backed Securities		194,735,776.75	0.47	1.22	7.6%
Repurchase Agreements					
	Overnight	310,446,519.53	0.08	0.00	12.2%
	< 30 days	0.00	0.00	0.00	0.0%
	< 60 days	0.00	0.00	0.00	0.0%
	< 90 days	0.00	0.00	0.00	0.0%
	< 1 year	0.00	0.00	0.00	0.0%
	Flex Repos	0.00	0.00	0.00	0.0%
	Sub-total	310,446,519.53	0.08	0.00	12.2%
Money Market Securities					
	Commercial Paper	0.00	0.00	0.00	0.0%
	Money Mkt Fund	275,000,000.00	0.06	0.10	10.8%
	Certificates of Deposit	0.00	0.00	0.00	0.0%
	Sub-total	275,000,000.00	0.06	0.10	10.8%
Derivatives					
	Swaps	0.00	0.00	0.00	0.0%
	OTC Options	0.00	0.00	0.00	0.0%
	Sub-total	0.00	0.00	0.00	0.0%
TOTALS		2,546,708,889.70	0.22	0.85	100.0%

8/31/2020

**PORTFOLIO SUMMARY
LIMITED TERM POOL**

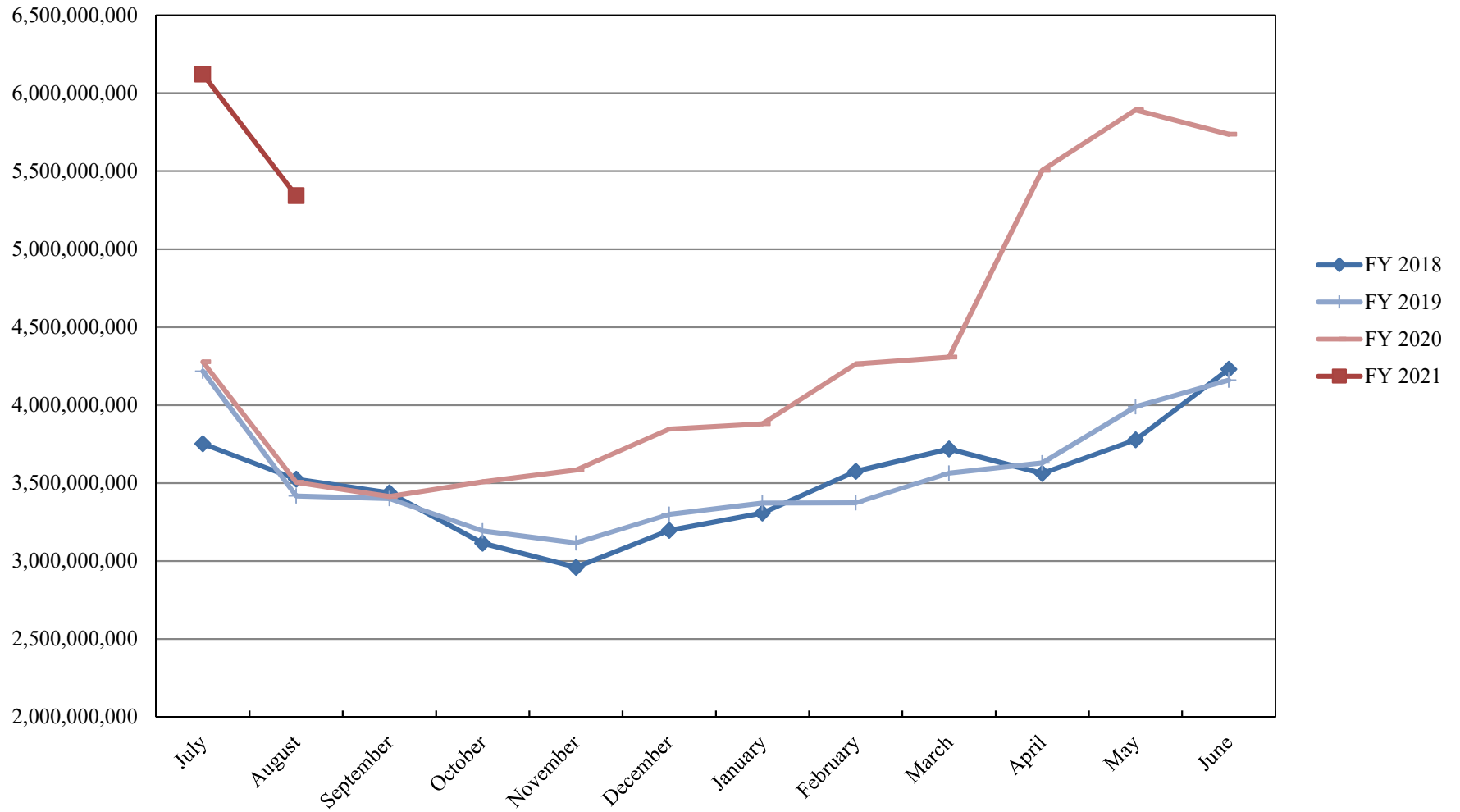
	TYPE	MARKET VALUE	MARKET YIELD (%)	DURATION (Years)	PERCENT of TOTAL
Government					
	Bills	674,961,839.00	0.09	0.07	41.1%
	Treasury Notes	0.00	0.00	0.00	0.0%
	Supranational	0.00	0.00	0.00	0.0%
	Sovereign	0.00	0.00	0.00	0.0%
	Sub-total	674,961,839.00	0.00	0.00	41.1%
Agencies					
	Notes	0.00	0.00	0.00	0.0%
	Discounts	599,976,765.00	0.08	0.05	36.5%
	Sub-total	599,976,765.00	0.08	0.05	36.5%
Corporates		0.00	0.00	0.00	0.0%
Municipals		0.00	0.00	0.00	0.0%
Mortgages		0.00	0.00	0.00	0.0%
ABS		0.00	0.00	0.00	0.0%
Repurchase Agreements					
	Overnight	243,039,826.97	0.08	0.00	14.8%
	< 30 days	0.00	0.00	0.00	0.0%
	< 60 days	0.00	0.00	0.00	0.0%
	< 90 days	0.00	0.00	0.00	0.0%
	< 1 year	0.00	0.00	0.00	0.0%
	Flex Repos	0.00	0.00	0.00	0.0%
	Sub-total	243,039,826.97	0.08	0.00	14.8%
Money Market Securities					
	Commercial Paper	0.00	0.00	0.00	0.0%
	Money Mkt Fund	125,000,000.00	0.06	0.10	7.6%
	Certificates of Deposit	0.00	0.00	0.00	0.0%
	Sub-total	125,000,000.00	0.06	0.10	7.6%
TOTALS		1,642,978,430.97	0.08	0.05	100.0%

8/31/2020

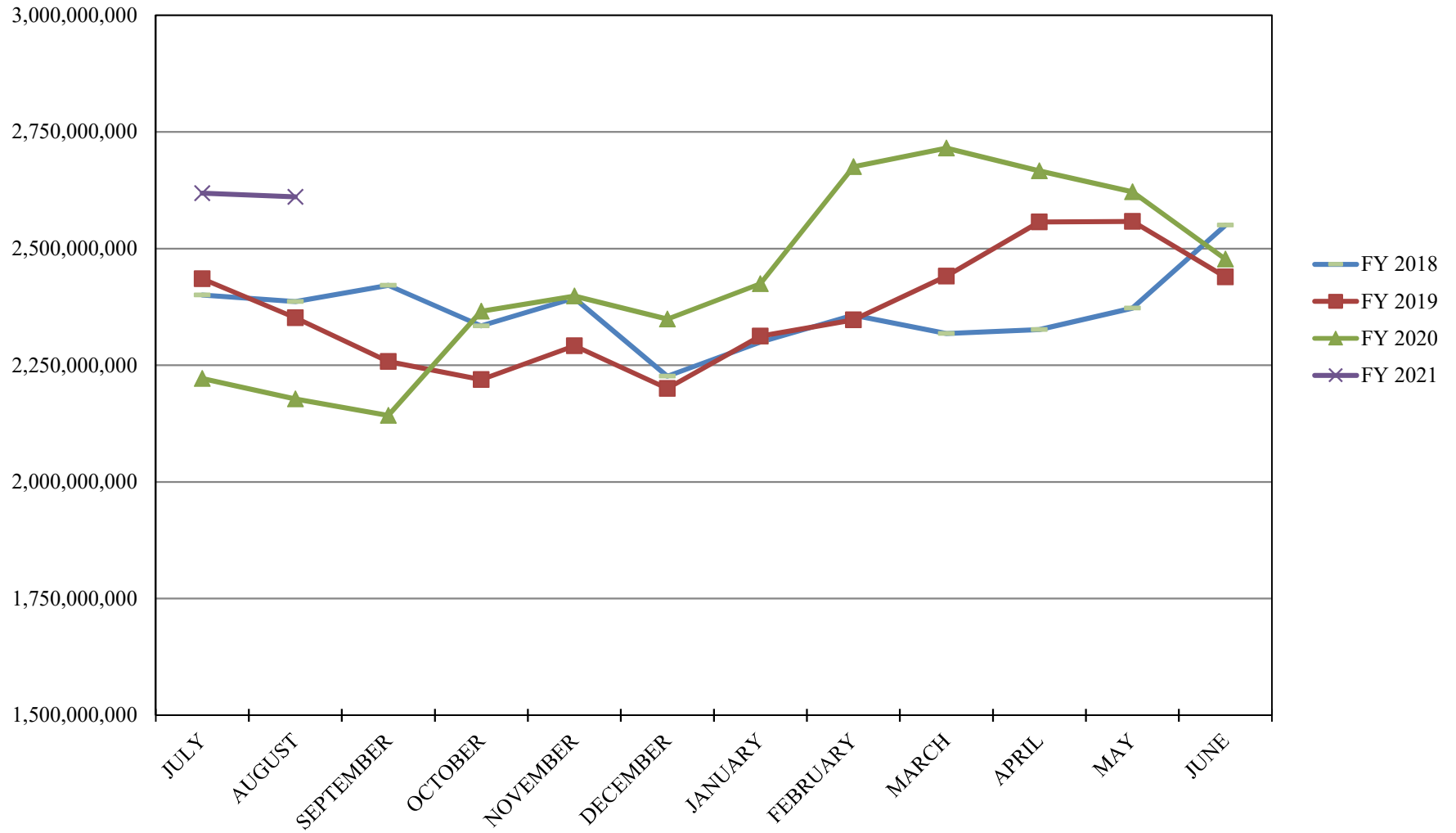
PORTFOLIO SUMMARY
SHORT TERM POOL

	TYPE	MARKET VALUE	MARKET YIELD (%)	DURATION (Years)	PERCENT of TOTAL
Government					
	Bills	0.00	0.00	0.00	0.0%
	Treasury Notes	0.00	0.00	0.00	0.0%
	Supranational	0.00	0.00	0.00	0.0%
	Sovereign	0.00	0.00	0.00	0.0%
	Sub-total	0.00	0.00	0.00	0.0%
Agencies					
	Notes	0.00	0.00	0.00	0.0%
	Discounts	0.00	0.00	0.00	0.0%
	Sub-total	0.00	0.00	0.00	0.0%
Corporates		0.00	0.00	0.00	0.0%
Municipals		0.00	0.00	0.00	0.0%
Mortgages	CMOs	0.00	0.00	0.00	0.0%
ABS		0.00	0.00	0.00	0.0%
Repurchase Agreements					
	Overnight	-153,488,318.25	0.08	0.00	-12.1%
	< 30 days	0.00	0.00	0.00	0.0%
	< 60 days	0.00	0.00	0.00	0.0%
	< 90 days	0.00	0.00	0.00	0.0%
	< 1 year	0.00	0.00	0.00	0.0%
	Flex Repos	0.00	0.00	0.00	0.0%
	Sub-total	-153,488,318.25	0.08	0.00	-12.1%
Money Market Securities					
	Commercial Paper	0.00	0.00	0.00	0.0%
	Money Mkt Fund	1,424,000,000.00	0.04	0.12	112.1%
	Certificates of Deposit	0.00	0.00	0.00	0.0%
	Sub-total	1,424,000,000.00	1.58	0.08	112.1%
TOTALS		1,270,511,681.75	0.04	0.14	100.0%

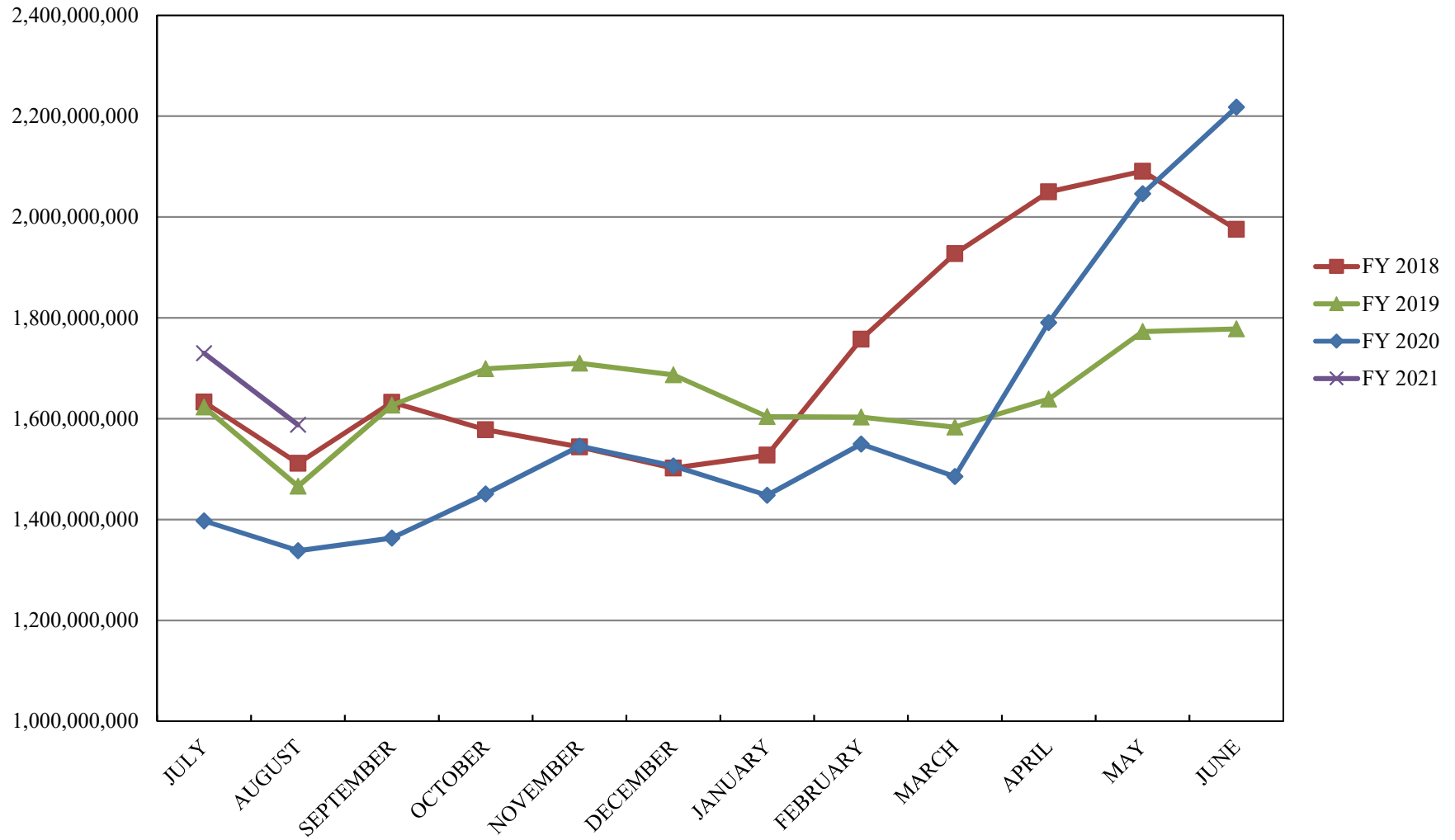
INVESTABLE BALANCES



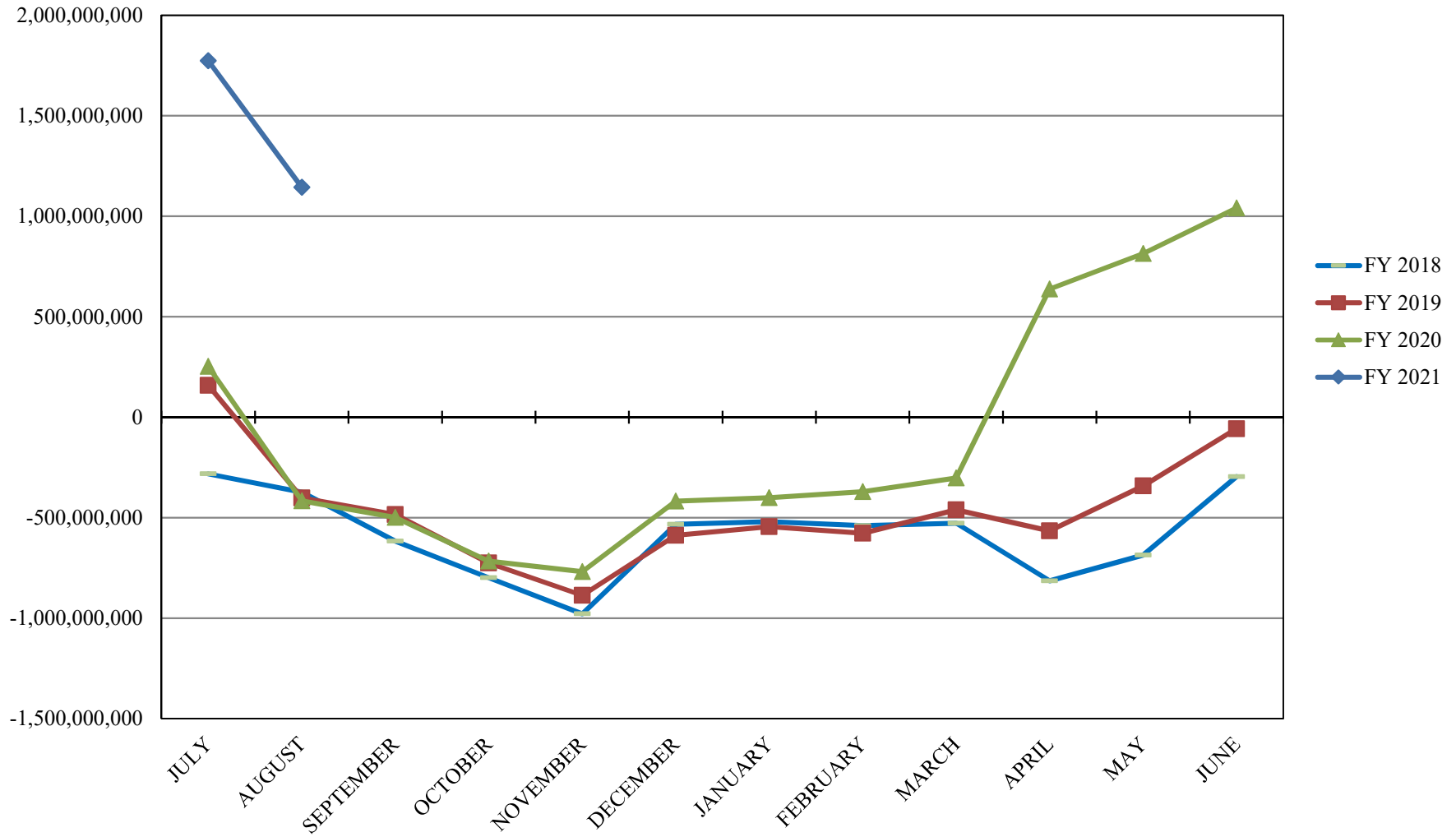
INTERMEDIATE INVESTABLE BALANCES



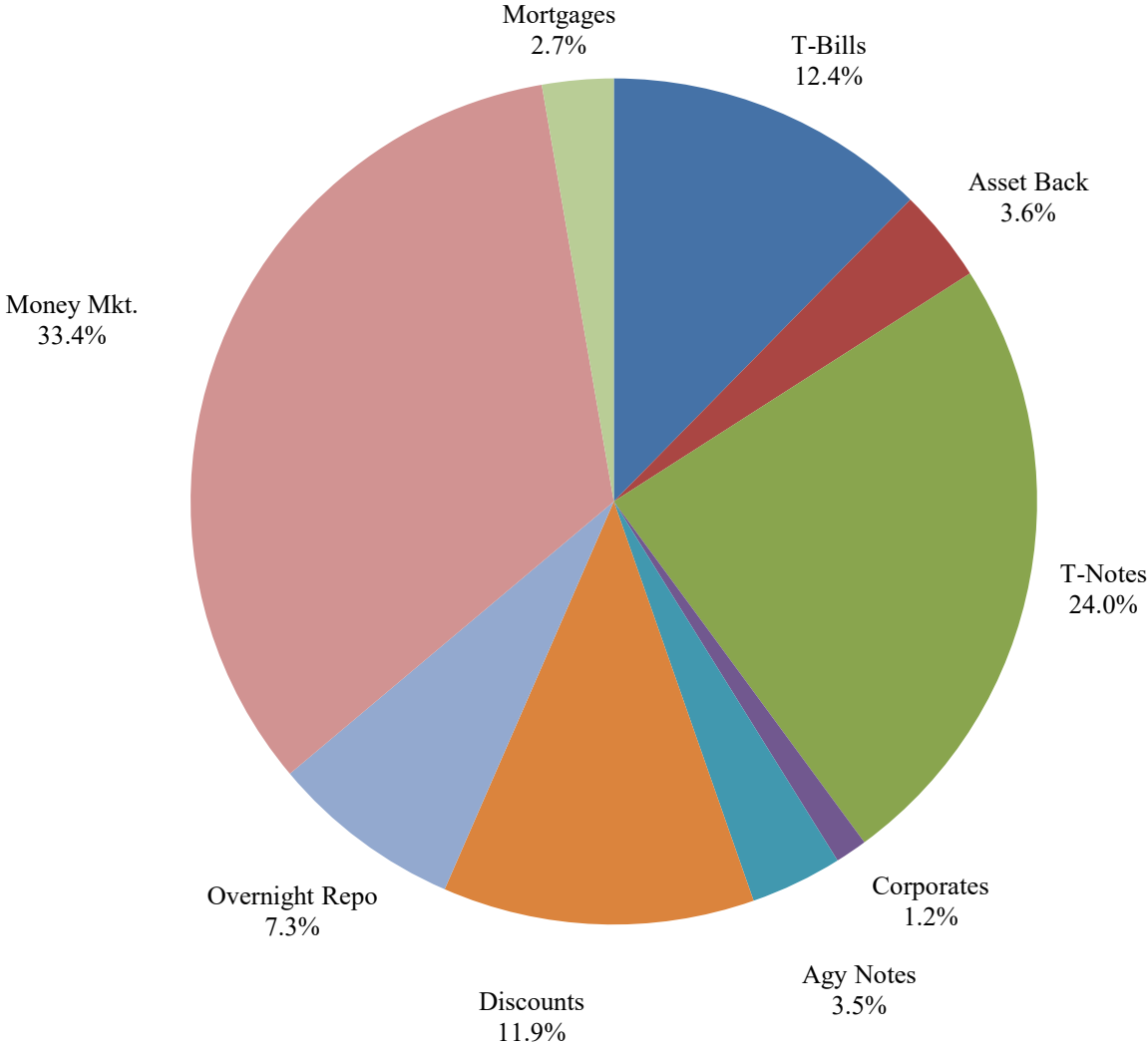
LIMITED POOL INVESTABLE BALANCES



SHORT TERM POOL INVESTABLE BALANCES



Distribution of Investments for August



PERFORMANCE RESULTS JULY 1995 THROUGH AUGUST 2020

	Intermediate Pool	Benchmark A*	Benchmark B**
	Period Return	Period Return	Period Return
1 Month	-0.004%	0.022%	-0.009%
3 Month	0.145%	0.074%	0.074%
6 Month	0.957%	1.330%	0.867%
FYTD	0.074%	0.110%	0.035%
1 Year	2.349%	3.111%	2.222%
3 Year	2.239%	2.550%	2.098%
5 Year	1.718%	1.816%	1.494%
10 Year	1.241%	1.295%	0.890%
Since Inception	3.244%	3.383%	2.809%

*Benchmark A consists of 70% Government 1-3 year, 15% Mortgage 0-3 and 15% money market.

**Benchmark B consists of 85% U.S. Treasury 1-Year Note Index and 15% Fed Funds Rate Index.

Returns less than a year are unannualized.

PERFORMANCE RESULTS JULY 2011 THROUGH AUGUST 2020

	Limited Pool	Benchmark A*	Benchmark B**
	Period Return	Period Return	Period Return
1 Month	0.005%	0.015%	0.008%
3 Month	0.015%	0.067%	0.022%
6 Month	0.116%	0.294%	0.095%
FYTD	0.009%	0.037%	0.016%
1 Year	0.941%	1.197%	0.955%
3 Year	1.561%	1.669%	1.615%
5 Year	1.141%	1.198%	1.180%
Since Inception	0.676%	0.683%	0.693%

*Benchmark A is S&P Local Government Investment Pool

**Benchmark B is Fed Funds Rate Index

Returns less than a year are unannualized.