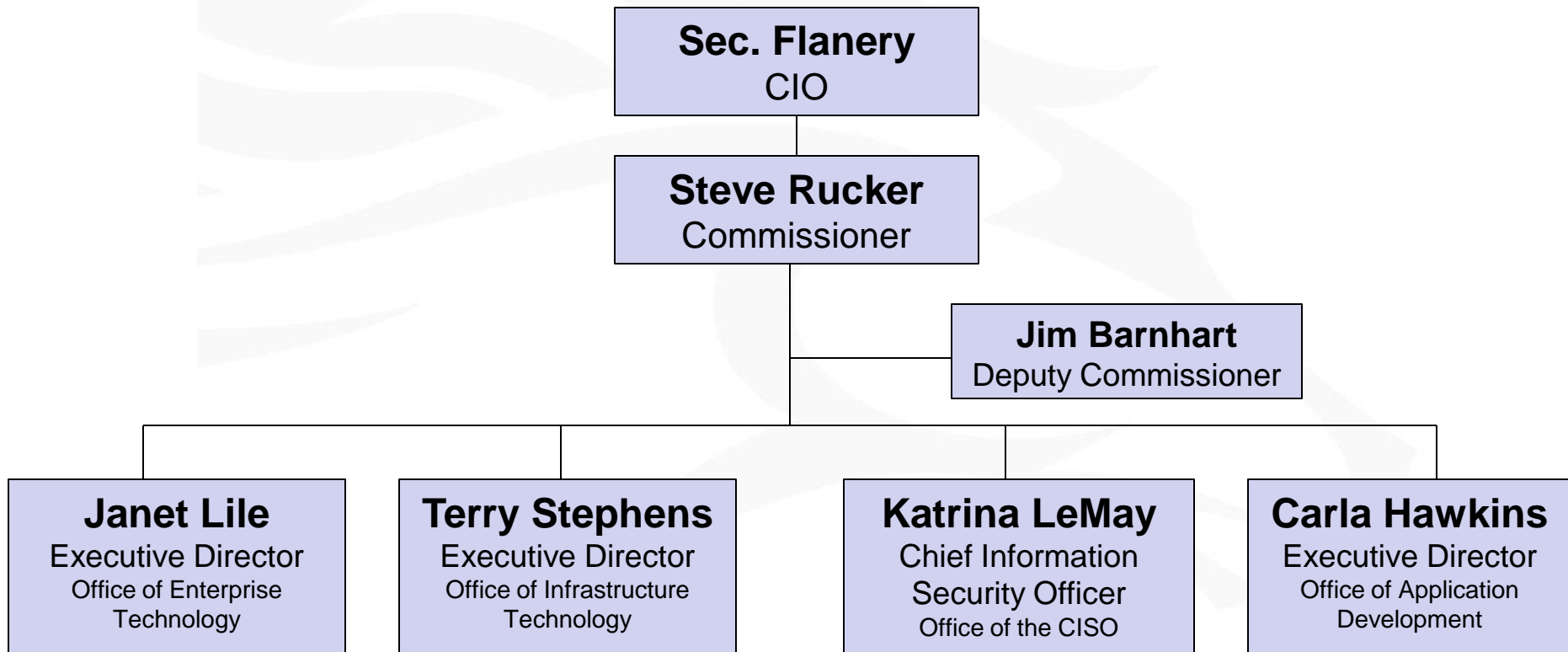




IT Infrastructure Initiative
Employee Meeting
October 2012

HR Transition

Executive Management



HR Transition Teams by Agency Two Teams

HR Transition Team

Daniel Arnold - Manager
Sally Arnold – Administrative
Support

CHFS
Personnel
Education / Workforce
Economic Development
Veterans Affairs

HR Transition Team

Bill Kidd - Manager
Katie Cowherd – Administrative
Support

KYTC
Justice
GAPS (EEC and PPC)
Labor
Board of Nursing



Agency Infrastructure Assessment

Agency Infrastructure Assessment

- Team Leads are Brett McDonald and Brian Hiles
- Team Structure:
 - Office of the State Budget Director
 - COT IT Leadership
 - COT SMEs with agency knowledge
 - Agency IT and Financial Leaders
 - Agency Business Stakeholders
- Teams will collect information regarding the agency IT infrastructure and support services
- No permanent moves of people and/or equipment until the assessments are complete
- Start date is November 15 and anticipated completion is early 2013.



Next Steps

Next Steps

The FAC HR Administrators and your transition managers will provide additional information and logistical support. Your department/office will be Commonwealth Office of Technology/Office of Enterprise Technology. Your branch/unit will be Division of IT Governance.

Contact Information

Troy Robinson:	troy.robinson@ky.gov	(502) 564-0410
Daniel Arnold:	daniel.arnold@ky.gov	(502) 564-4287
Sally Arnold:	sally.arnold@ky.gov	(502) 564-9290
Bill Kidd:	bill.kidd@ky.gov	(502) 564-5752
Katie Cowherd:	katie.cowherd@ky.gov	(502) 564-1877

If you would like to contact Commissioner Rucker, please work with Kim Meyer at kim.meyer@ky.gov and the phone number is (502) 564 - 6824. For additional information about the IT Infrastructure Initiative, please look for updates periodically at <http://finance.ky.gov/initiatives/ITInfrastructureinitiative/>. Should you have questions that arise which are not addressed on the aforementioned website, please feel free to send your questions to i3@ky.gov.



Questions

&

Answers