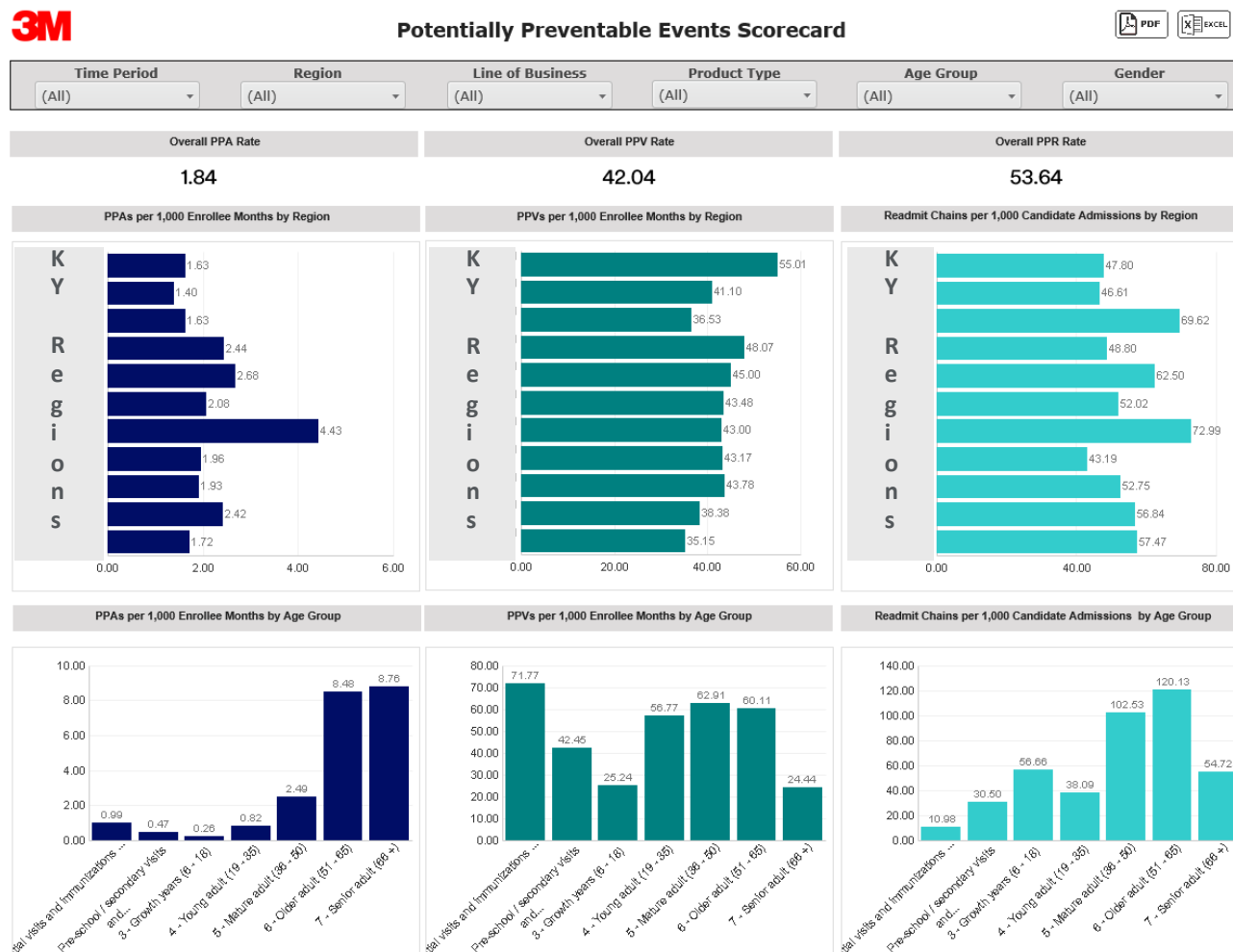
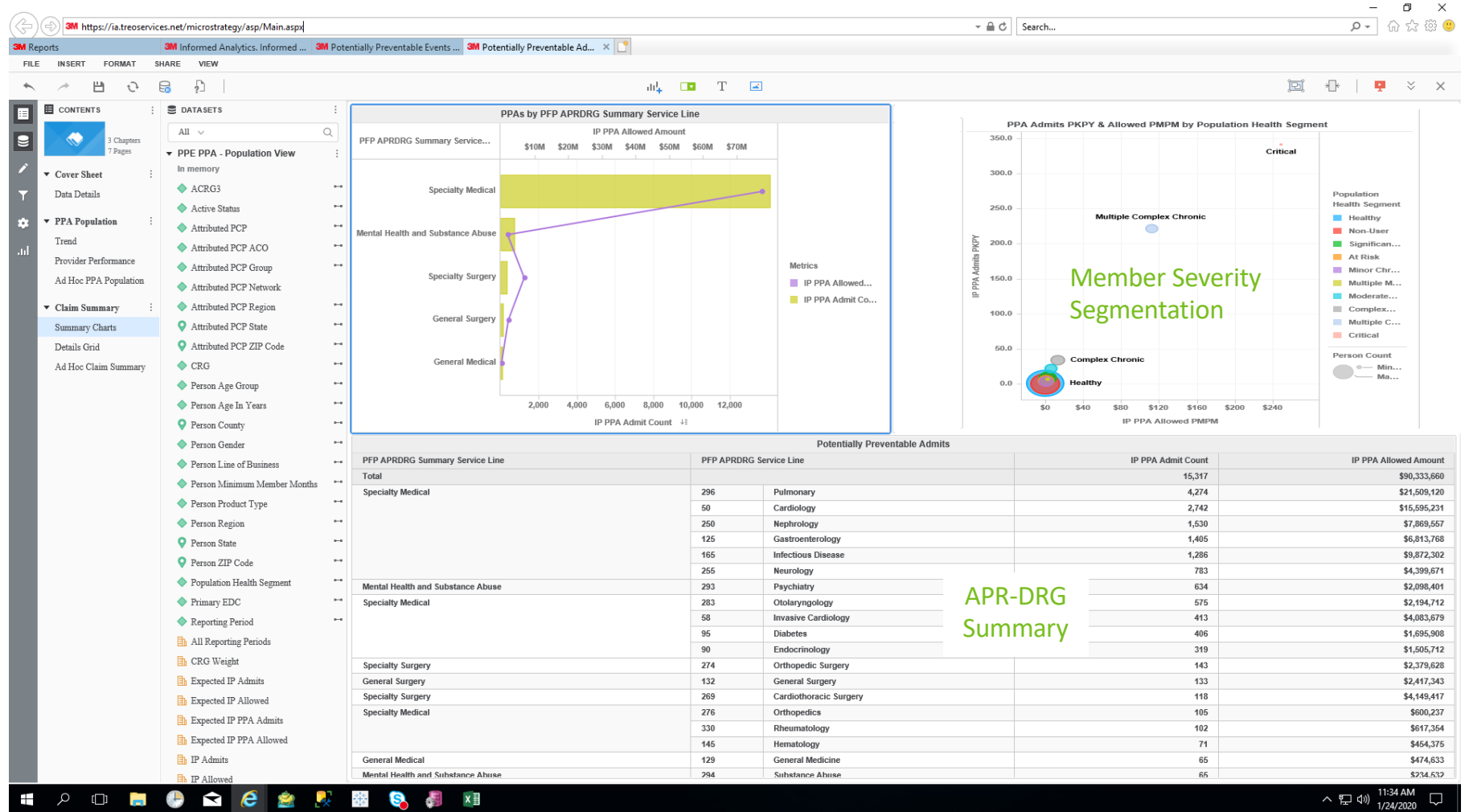


Potentially Preventable Event: Metric Scorecard



Scorecards can be customized, standardized and automatically updated and distributed to key stakeholders

Potentially Preventable Events: Population Segmentation



Potentially Preventable Events: PCP & Member Analysis

3M Reports | 3M Informed Analytics. Informed ... | 3M Potentially Preventable Events ... | 3M Potentially Preventable Ad...

FILE INSERT FORMAT SHARE VIEW

CONTENTS | DATASETS

All

PPE PPA - Population View

In memory

- ACRG3
- Active Status
- Attributed PCP
- Attributed PCP ACO
- Attributed PCP Group
- Attributed PCP Network
- Attributed PCP Region
- Attributed PCP State
- Attributed PCP ZIP Code
- CRG
- Person Age Group
- Person Age In Years
- Person County
- Person Gender
- Person Line of Business
- Person Minimum Member Months
- Person Product Type
- Person Region
- Person State
- Person ZIP Code
- Population Health Segment
- Primary EDC
- Reporting Period
- All Reporting Periods
- CRG Weight
- Expected IP Admits
- Expected IP Allowed
- Expected IP PPA Admits
- Expected IP PPA Allowed
- IP Admits
- IP Allowed

PPA Percent Differences from Expected

Attributed PCP	IP PPA Admits	IP PPA Admits PKPY	IP PPA Admits % Diff	IP PPA Allowed	IP PPA Allowed FMPM	IP PPA Allowed % Diff
Total	15,317	22.3	11.5%	\$90,333,660	\$10.95	13.5%
	830	112.5	19.5%	\$7,320,461	\$82.68	48.4%
	810	144.1	25.0%	\$5,278,702	\$78.25	14.6%
	765	169.1	25.3%	\$4,961,654	\$91.41	18.8%
	676	107.9	5.4%	\$5,066,872	\$67.40	13.1%
	606	158.6	34.1%	\$3,936,291	\$85.86	26.7%
	544	82.6	8.8%	\$4,679,196	\$59.20	36.5%
	539	104.7	17.5%	\$3,284,846	\$53.18	9.9%
	433	84.0	5.4%	\$3,247,217	\$52.50	15.2%
	368	106.4	4.2%	\$2,516,734	\$60.64	6.4%
	337	107.4	-3.2%	\$2,146,424	\$57.01	-5.9%
	263	159.6	34.1%	\$1,667,370	\$84.30	24.5%
	251	45.9	11.8%	\$1,369,451	\$20.85	16.7%
	236	127.5	48.2%	\$1,497,964	\$67.45	41.9%
	225	114.4	24.5%	\$1,630,360	\$68.10	33.3%
	156	105.6	42.4%	\$1,061,924	\$59.88	47.9%
	136	126.5	49.7%	\$712,938	\$55.25	19.7%
	133	119.9	65.0%	\$850,736	\$63.91	64.0%
	84	10.2	53.6%	\$287,348	\$2.90	43.7%
	75	41.5	19.6%	\$330,290	\$15.23	-1.6%
	67	10.9	58.7%	\$243,121	\$3.30	41.7%
	55	40.2	13.6%	\$207,697	\$12.64	-13.7%
	55	252.9	49.9%	\$327,332	\$125.41	50.2%
	50	38.2	47.6%	\$346,328	\$22.05	116.8%
	49	9.7	43.5%	\$200,337	\$3.30	41.0%
	46	173.3	595.6%	\$104,385	\$32.77	239.7%
	42	31.3	4.1%	\$352,236	\$21.88	30.0%
	42	18.7	-10.4%	\$192,969	\$7.18	-23.6%
	39	8.7	16.2%	\$147,873	\$2.75	11.7%

Capabilities include:

- PCP-level review
- Member-level analysis

11:33 AM
1/24/2020