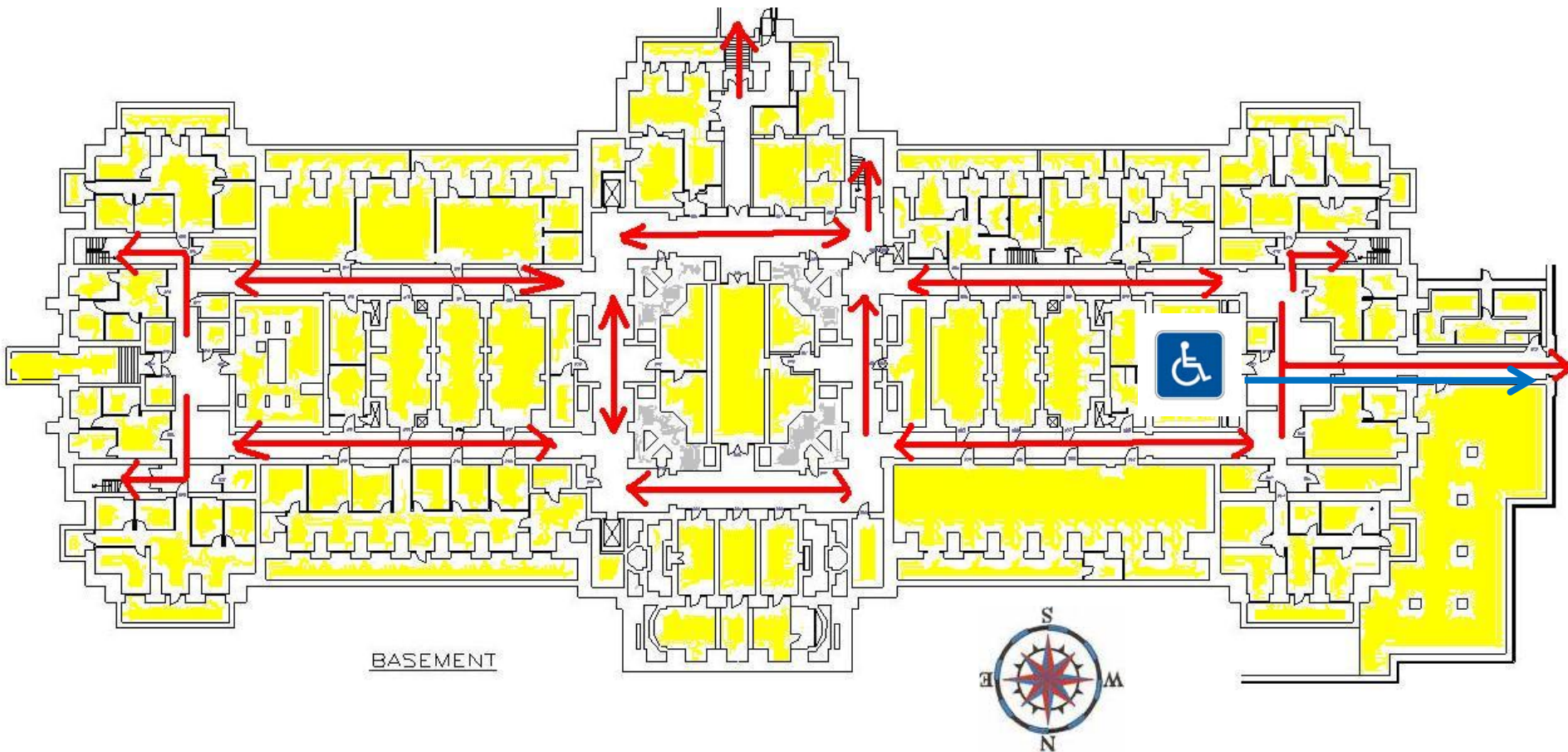


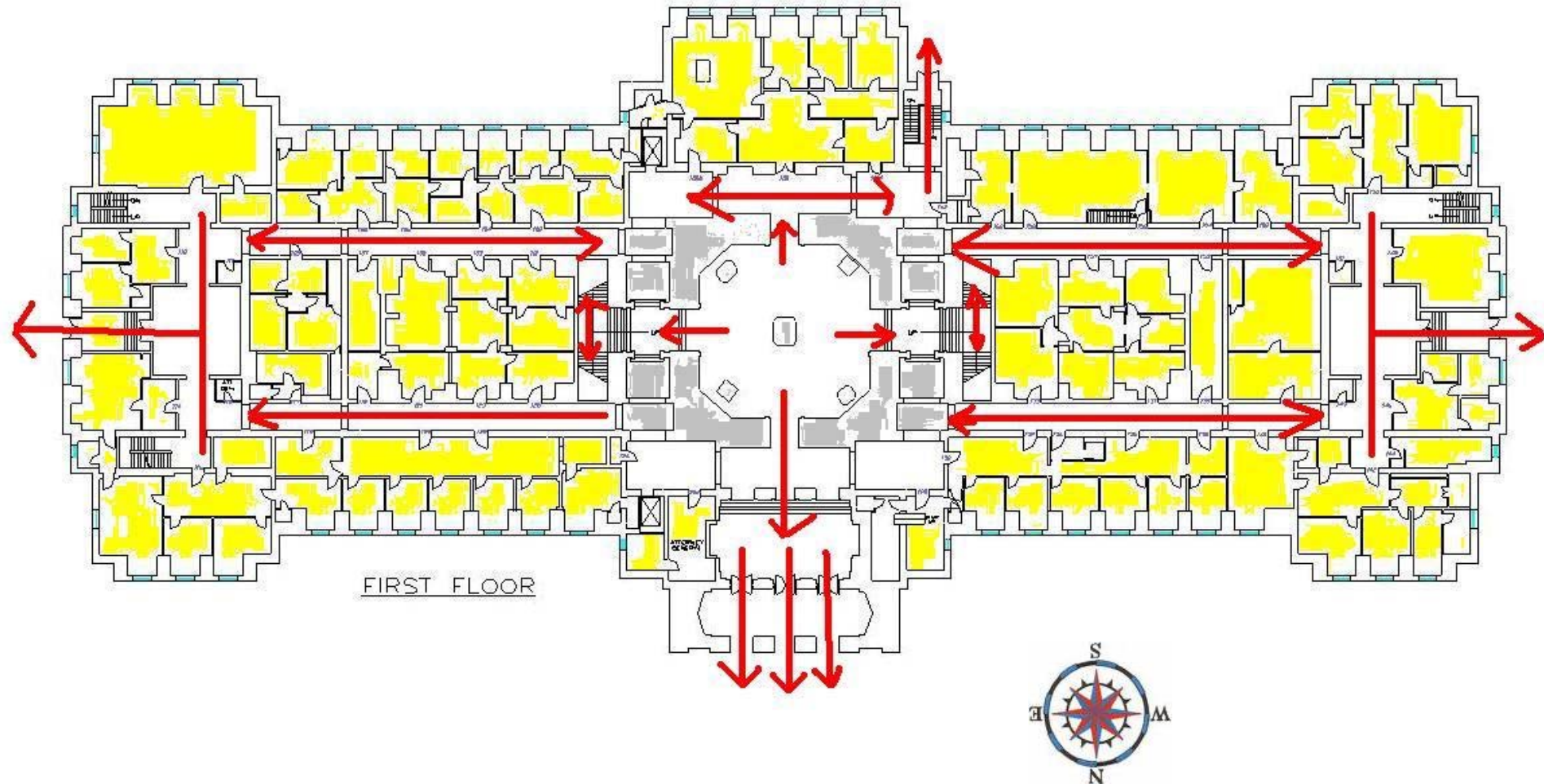
Capitol

Emergency Evacuation Plan Charts

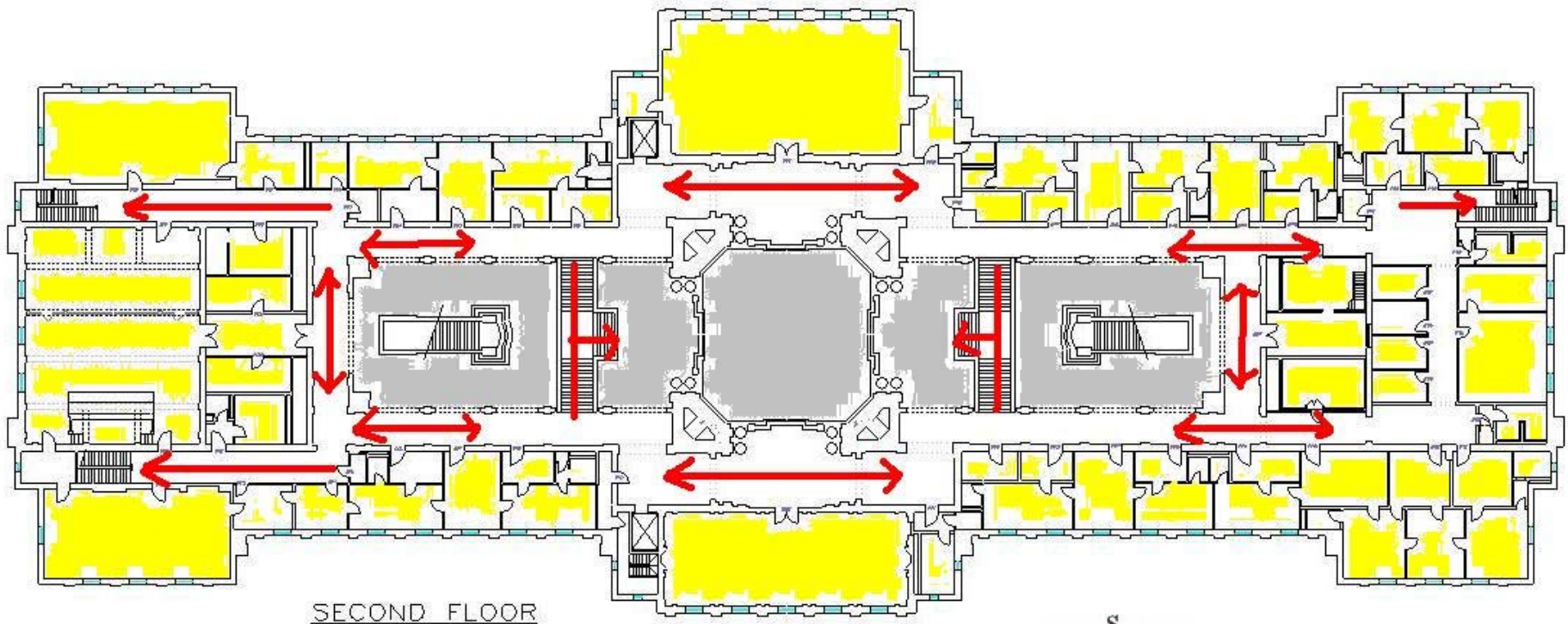
Capitol—Basement Evacuation



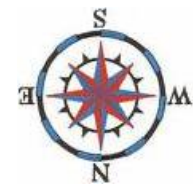
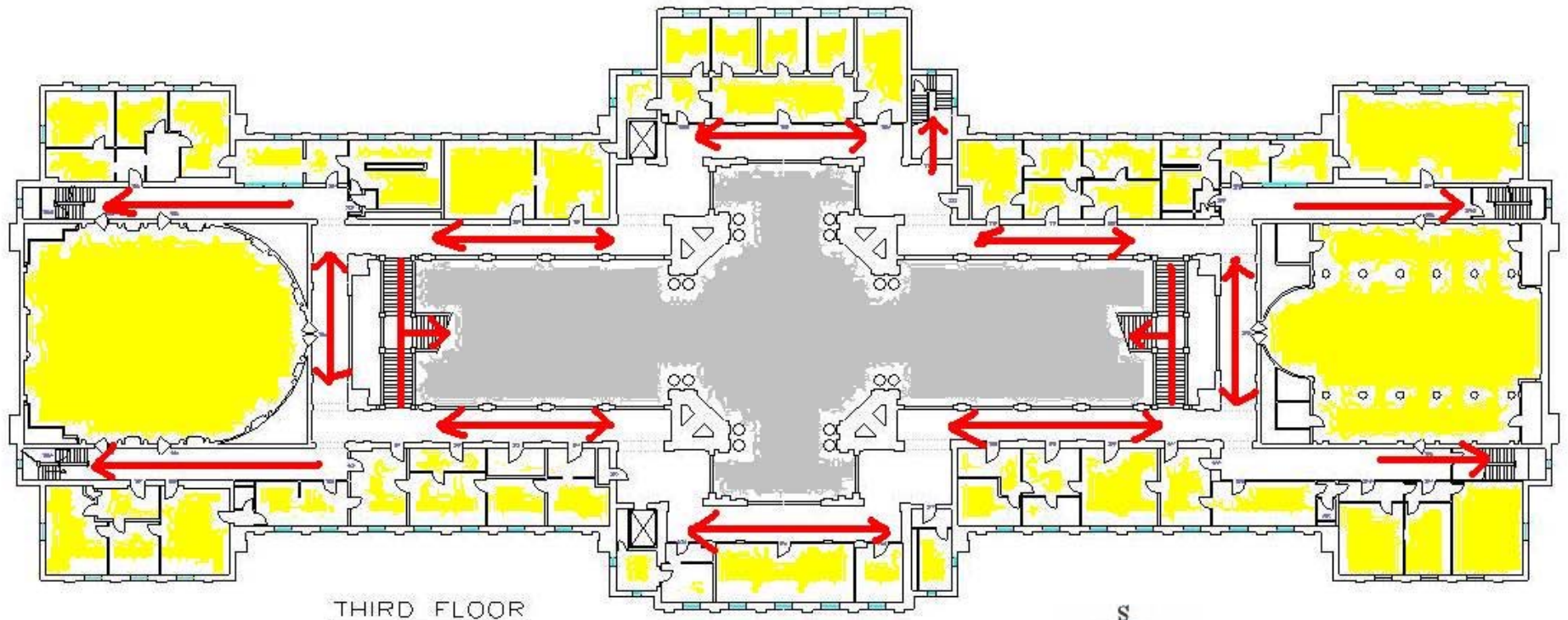
Capitol—1st Floor Evacuation



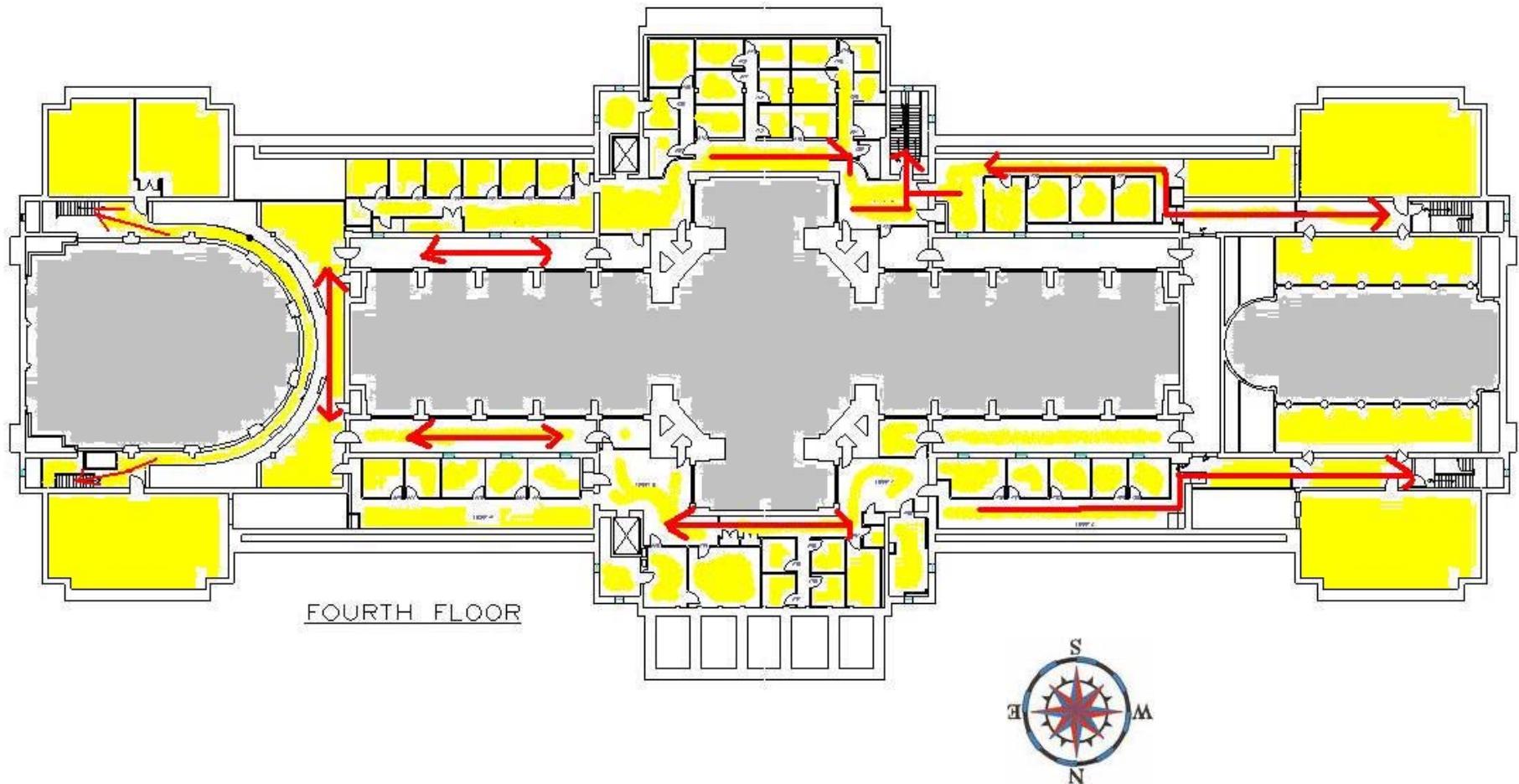
Capitol—2nd Floor Evacuation



Capitol—3rd Floor Evacuation



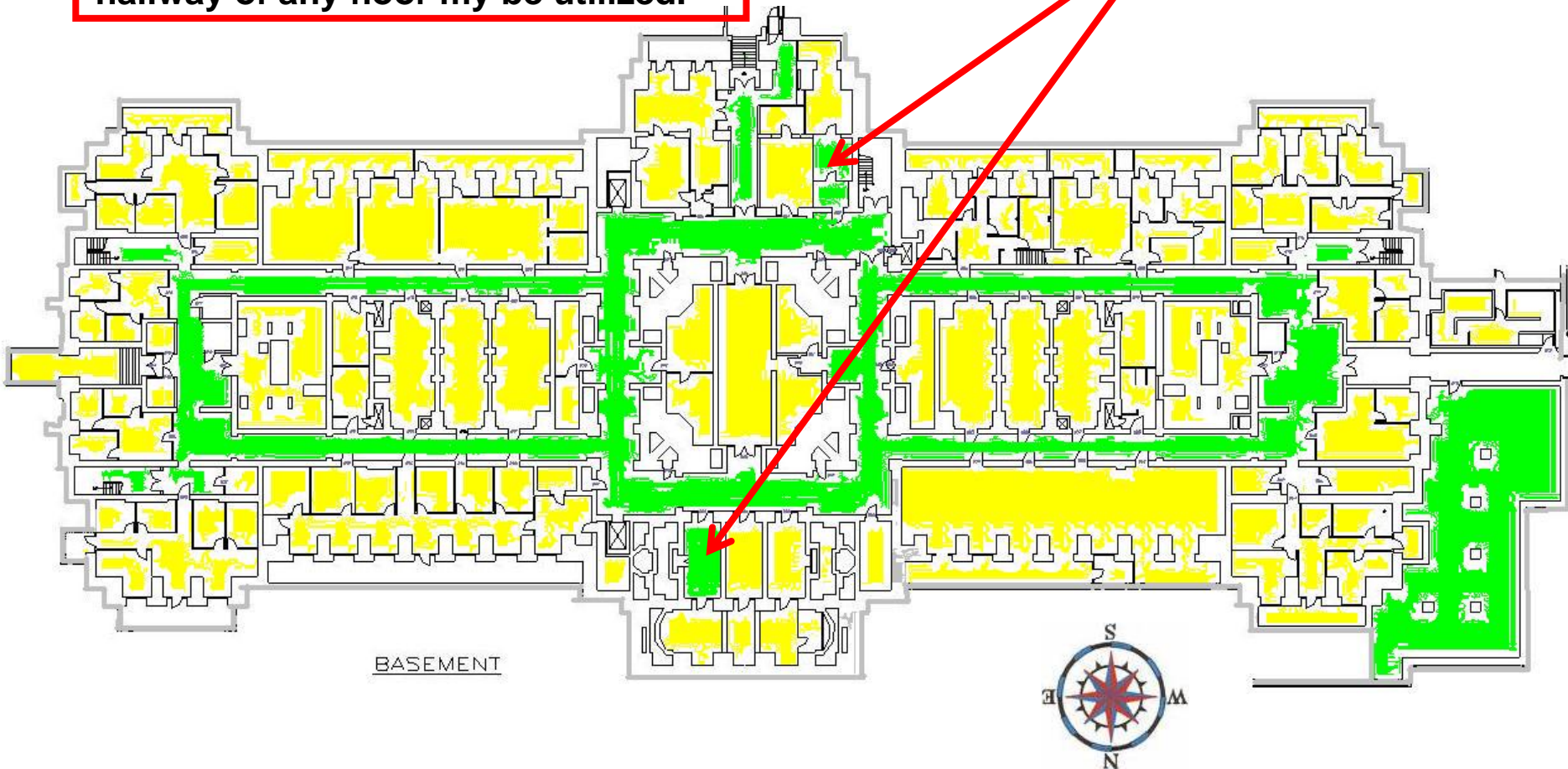
Capitol—4th Floor Evacuation



Capitol—Tornado Sheltering

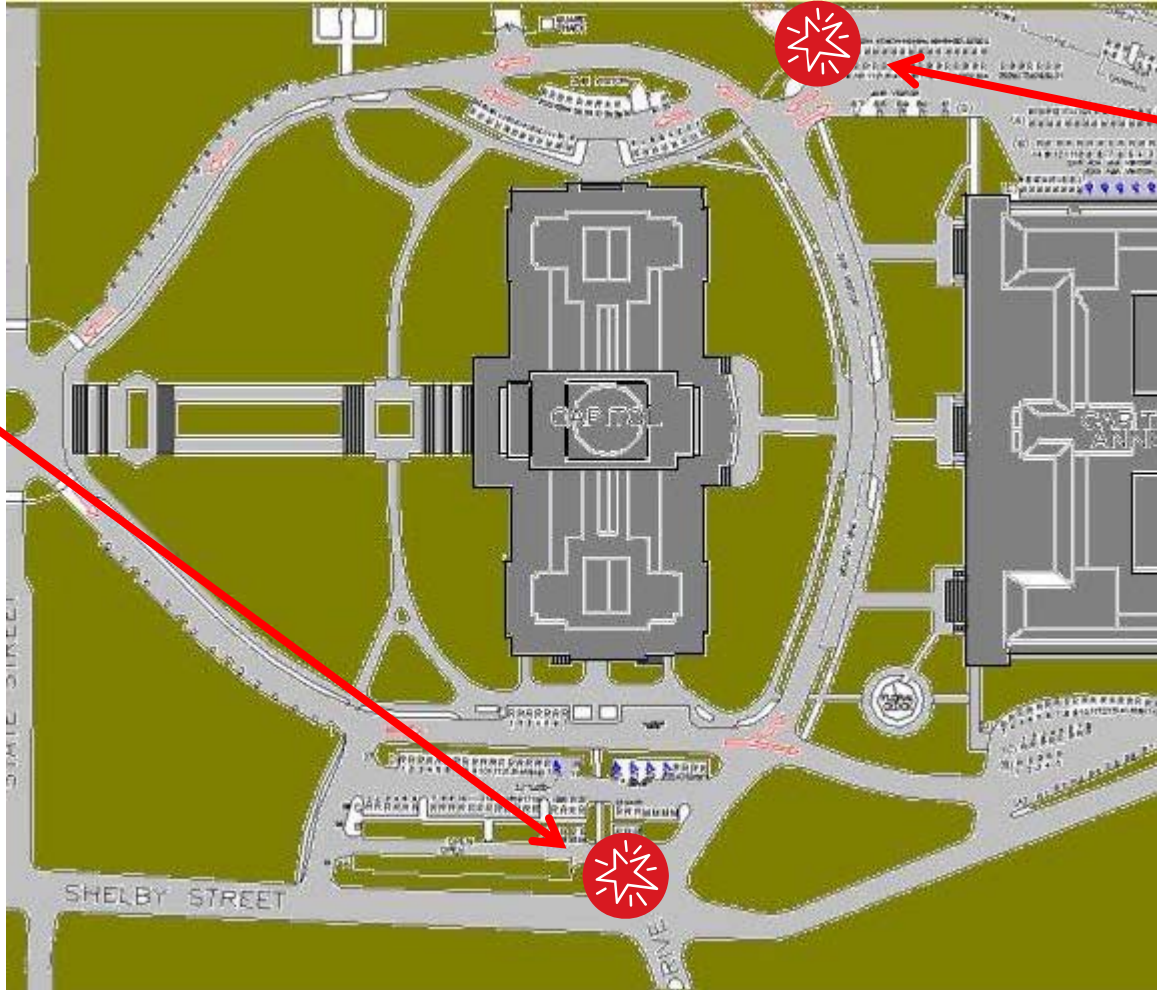
Alternate Sheltering: If the primary area can not be reached, any interior hallway of any floor may be utilized.

Primary Shelter: DBS or DMS Office



Capitol—Evacuation Plan

Primary
Emergency
Relocation/
Rally Point.



Alternate
Emergency
Relocation/
Rally Point.

